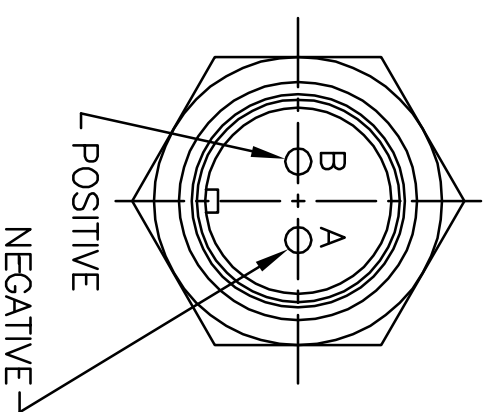
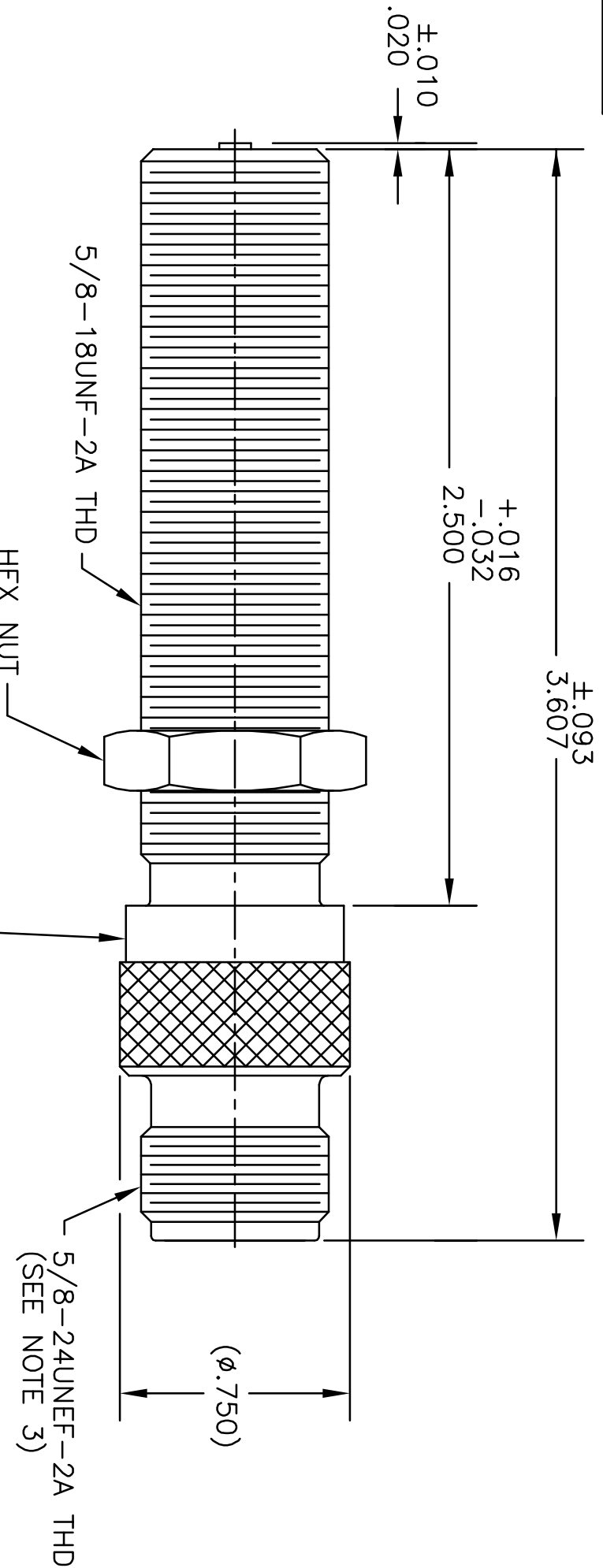
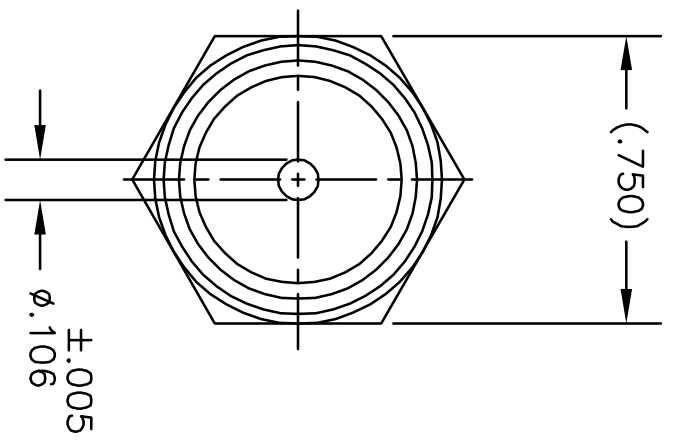


PARAMETER	VALUE
OUTPUT VOLTAGE	190V PK-PK MIN
COIL RESISTANCE	1200 OHMS MAX
INDUCTANCE	450 mH MAX @ 1KHz
DIELECTRIC STRENGTH	500V RMS AT 60HZ FOR 1 MIN MAX NOT TO EXCEED 100V PER SECOND
LEAKAGE RESISTANCE	100 MEGOHMS MINIMUM
TEMPERATURE LIMITS	-67°F TO +250°F
CUSTOMER DWG NO	

NOTES:

- TESTED AT 1000 I.P.S. WITH A 20 PITCH GEAR AT .005 INCH CLEARANCE AND A LOAD OF 100K OHMS.
- POLARITY: WHEN FERROUS METAL IS INTRODUCED INTO MAGNETIC FIELD, PIN "B" WILL BE POSITIVE WITH RESPECT TO PIN "A".
- CONNECTOR MATES WITH MS 3106A-10SL-4S

(F)



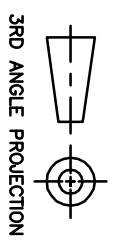
ROLL DIE "EC 3030AN25 XX"  
DATE CODE

THIS IS A COMPUTER GENERATED DRAWING  
MANUAL REVISIONS WILL NOT BE RECORDED

DWG. NO. 3030AN25 SH 1 REV F

REVISIONS

REV.	DESCRIPTION	DATE	APPROVAL
E	REVISED & REDRAWN CN14075	8/2/94	PEP
F	WAS -100°F TO +225°F CN14491	7/24/95	PEP



3RD ANGLE PROJECTION

UNLESS OTHERWISE SPECIFIED  
DIMENSIONS ARE IN INCHES

.XXX DECIMAL ± .010  
.XX DECIMAL ± .03  
FRACTIONS ± 1/32  
ANGLES ± 5'  
RUNOUT .008 FIM  
129 RMS OR BETTER ON  
MACHINED PARTS.  
BREAK SHARP CORNERS  
.005/.015 NO BURRS

DO NOT SCALE DRAWING

THIS DOCUMENT IS THE PROPERTY OF ELECTRO CORPORATION AND MAY NOT BE REPRODUCED EITHER IN FULL OR IN PART WITHOUT WRITTEN APPROVAL BY ELECTRO CORPORATION.

MATERIAL:  
SHELL IS NON-MAGNETIC  
STAINLESS STEEL

DRAWN MT 1/24/79

CHKD. DEB 4/17/79

ENGR. RR 4/27/79

MFG. ---

Q.C. ---

SIZE FSGM NO. B 81692

ELECTRO CORPORATION

SCALE NONE

TITLE VRS SENSOR

MODEL DWG. NO. 3030AN25  
DRAWING INTERPRETATION PER ANSI Y14.5M-1982  
SHEET 1 OF 1

UNCONTROLLED COPY. REVISIONS WILL NOT BE AUTOMATICALLY UPDATED. CONFIRM APPROPRIATE REVISION LEVEL WITH ELECTRO CORPORATION.