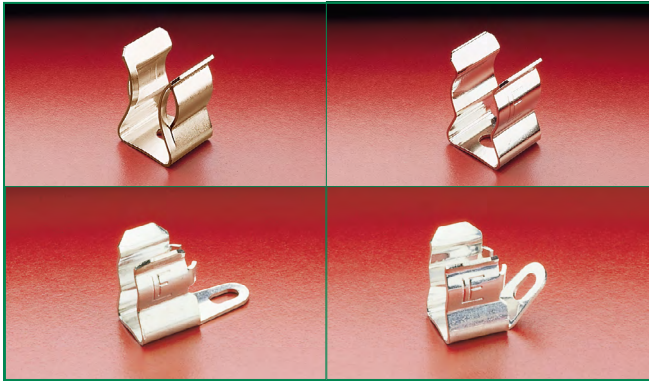
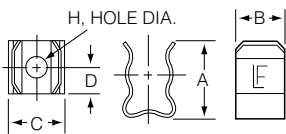


101/102/105/107/109/121/125/127/129 Series Rivet/Eyelet Mount Fuse Clips for 1/4" - 13/16" Dia. Fuses RoHS Pb

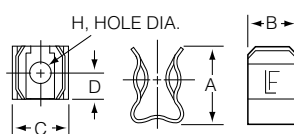


Product Dimensions

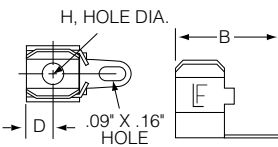
Earless Clip Type
(without fuse stops)



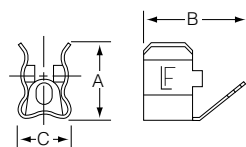
Ear Clip Type
(with fuse stops)



Straight Solder Lug Type



45° Angle Solder Lug Type



| Catalog No. | Fuse Diameter | A | B | C | D | H Diameter |
|--------------------------------------|---------------|--------|------|------|------|------------|
| 101001 101002 121001 121002 | 1/4" | .48" | .31" | .30" | .16" | .131" |
| 101003 121004 | | .47" | .56" | .31" | .15" | |
| 102064 | | NA | | | | |
| 105001 105002 | | 13/32" | .75" | .44" | .52" | |
| 125001 125002 | .74" | | | | | |
| 107002 127001 127002 | 9/16" | | .94" | | | .59" |
| 109001 109002 129001 129002 | 13/16" | 1.31" | .75" | .88" | .31" | .265" |

Product Characteristics

| | 101/102/121 Series | 105/125 Series | 107/127 Series | 109/129 Series |
|-----------------------------|--------------------|------------------|-----------------|------------------|
| Compatible Fuse Size | 1/4" Dia Fuses | 13/32" Dia Fuses | 9/16" Dia Fuses | 13/16" Dia Fuses |

Additional Information



Datasheet 101 Series



Resources 101 Series



Samples 101 Series



Datasheet 102 Series



Resources 102 Series



Samples 102 Series



Datasheet 121 Series



Resources 121 Series



Samples 121 Series



Datasheet 105 Series



Resources 105 Series



Samples 105 Series



Datasheet 125 Series



Resources 125 Series



Samples 125 Series



Datasheet 107 Series



Resources 107 Series



Samples 107 Series



Datasheet 127 Series



Resources 127 Series



Samples 127 Series



Datasheet 109 Series



Resources 109 Series



Samples 109 Series



Datasheet 129 Series



Resources 129 Series



Samples 129 Series

Ordering Information

| Ordering PN* | Catalog PN | Material | Plating | Style | Current Level | Packaging |
|--------------|------------|------------------|---------------|-------------------------|---------------|-----------|
| 0101 0001 | 101 001 | Spring Brass | Nickel-plated | Ear | 15A max | Z |
| 0121 0001 | 121 001 | Beryllium Copper | Silver-plated | Ear | 30A max | Z |
| 0105 0001 | 105 001 | Spring Brass | Nickel-plated | Ear | 15A max | Z |
| 0125 0001 | 125 001 | Beryllium Copper | Silver-plated | Ear | 30A max | Z |
| 0127 0001 | 127 001 | Beryllium Copper | Silver-plated | Ear | 30A max | Z |
| 0109 0001 | 109 001 | Phos. Bronze | Nickel-plated | Ear | 60A max | H or Z |
| 0129 0001 | 129 001 | Beryllium Copper | Silver-plated | Ear | 60A max | H or Z |
| 0101 0002 | 101 002 | Spring Brass | Nickel-plated | Earless | 15A max | Z |
| 0121 0002 | 121 002 | Beryllium Copper | Silver-plated | Earless | 30A max | Z |
| 0105 0002 | 105 002 | Spring Brass | Nickel-plated | Earless | 15A max | Z |
| 0125 0002 | 125 002 | Beryllium Copper | Silver-plated | Earless | 30A max | Z |
| 0107 0002 | 107 002 | Spring Brass | Nickel-plated | Earless | 30A max | Z |
| 0127 0002 | 127 002 | Beryllium Copper | Silver-plated | Earless | 30A max | H or Z |
| 0109 0002 | 109 002 | Phos. Bronze | Nickel-plated | Earless | 60A max | H or Z |
| 0129 0002 | 129 002 | Beryllium Copper | Silver-plated | Earless | 60A max | H or Z |
| 0101 0003 | 101 003 | Spring Brass | Tin-plated | Ear- Solder Lug 45* | 15A max | Z |
| 0121 0004 | 121 004 | Beryllium Copper | Silver-plated | Ear- Solder Lug 45* | 30A max | H or Z |
| 0102 0064 | 102 064 | Spring Brass | Tin-plated | Ear-Solder Lug Straight | 15A max | H or Z |

Add Suffix to the Ordering PN for Packaging

"H" =std. package 100 pcs per pack

"Z" =for bulk package