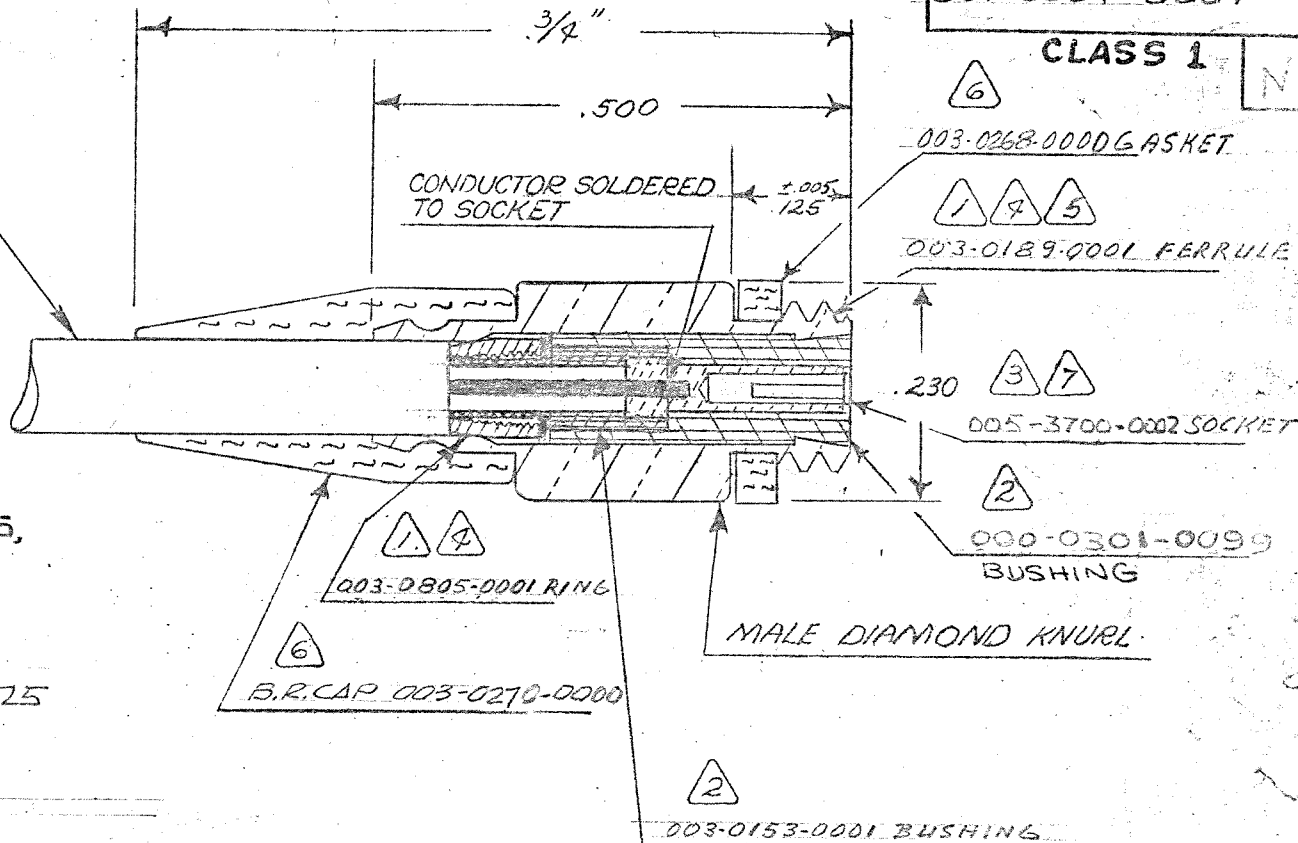


CABLE ACCEPTANCE DIM'S.
 JACKET DIA. .088 MAX.
 DIELECTRIC DIA. .038 MAX.
 CENTER COND. DIA. .015 MAX.

031-0034-0001

CLASS 1



(MATERIAL, FINISH)

- 1 FMA BRASS QQ-B-626 COMP. 360
- 2 TEFLON PER L-P-4837
- 3 GOLD PLATE PER MIL-G-45204, TYPE II, CL. I
- 4 SILVER PLATE .0002-.0004 PER QQ-S-365, TYPE II, GRADE A.
- 5 10-32UNF-2ATHD
- 6 SILICONE RUBBER, ZZ-R-765.
- 7 BERYLLIUM COPPER BERYLCO*33-25

NOTES:

1. 031-0034-0001 SAME AS 31-34

This connector mates with all connectors in A Group, S-50 Series as listed in Microdot Bulletin #43 Assembly instructions see Bulletin #48 Special Microdot Tool 010-0003-0000

Tyco Dwg 1-1532138-6
 Micro P/N 031-0034-0001

LET.	REVISION DESCRIPTION	BY	DATE	APP.
J	SEE ECD 16625	TC	9-20-58	TC
K	REVISED & REDRAWN ECD 17442	NT	1/10/59	NT
L	000-0301-0099 WAS 003-0301-0099 (ECO 19413)	NT	3/19/59	NT
M	B.R. CAP WAS 003-0031-0000 NOTE 6, WAS NEOPRENE ECN 36837	B	3/1/59	B
N	ECN 38686 REV. UPDATE	TS	3/4	TS

THESE DRAWINGS AND SPECIFICATIONS ARE THE PROPERTY OF MICRODOT INC. ARE ISSUED IN STRICT CONFIDENCE AND SHALL NOT BE REPRODUCED OR COPIED OR USED AS THE BASIS FOR THE MANUFACTURE OR SALE OF APPARATUS WITHOUT PERMISSION.

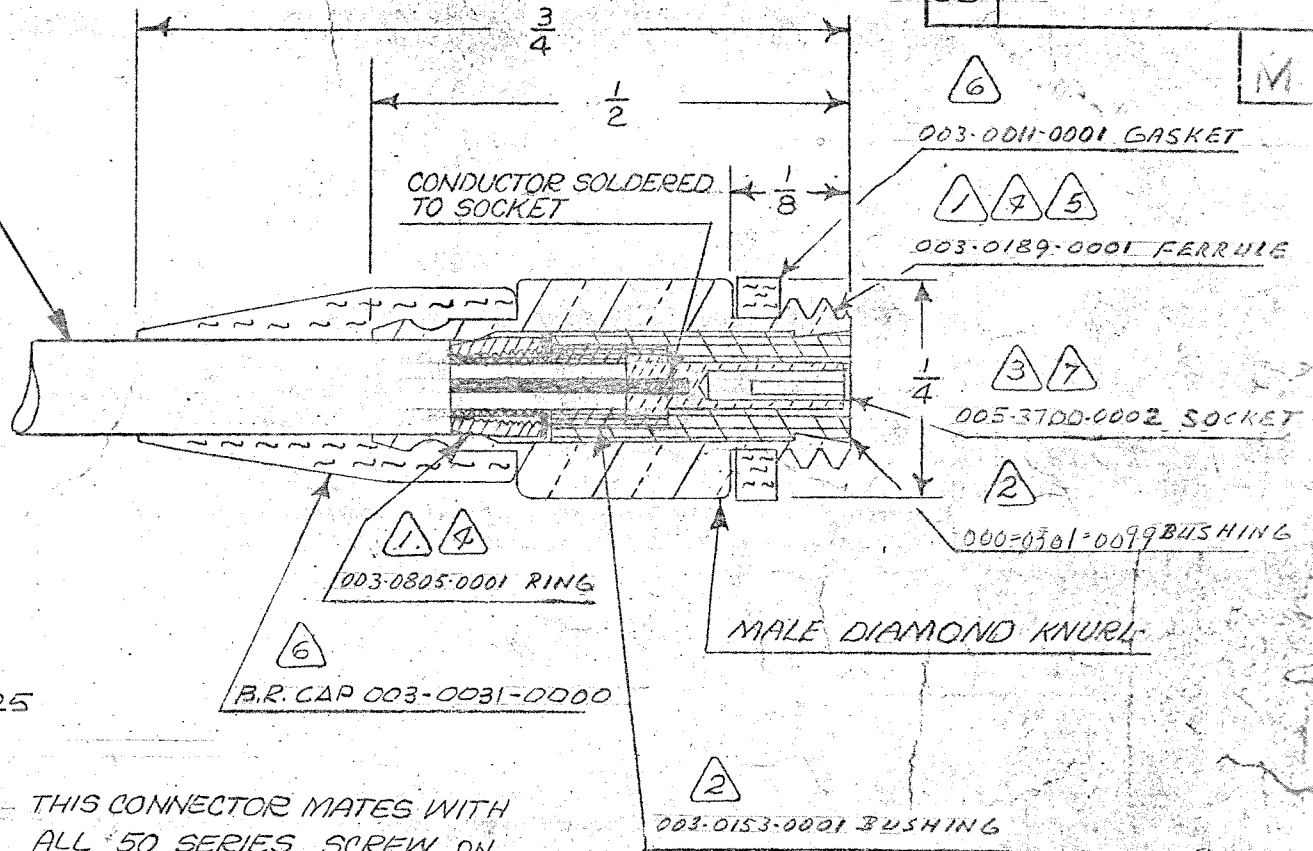
STANDARD TOLERANCES UNLESS OTHERWISE SPECIFIED
 DEC. XXX ± .010
 FRAC. ± 1/32
 ANGLES ±
 ECCENTRICITY
 MAX. T. I. R.
 COMMERCIAL TOLERANCES

MICRODOT, INC. SO. PASADENA, CALIF.		SURFACE TREATMENT		ENG. APP.
		NOTED		PROD. APP.
MACHINED FINISH (R.M.S.)		DRAWN BY		CHECKED BY
MATERIAL		SCALE	WT.	DATE
NOTED		5X		7-23-54
JACK		DRAWING NUMBER		
PROB CODE 021		031-0034-0001		N

ASSEMBLY NO. REQ'D.
 NEXT ASSEMBLY

CABLE ACCEPTANCE DIM'S
 JACKET DIA. .088 MAX.
 DIELECTRIC DIA. .038 MAX.
 CENTOR COND. DIA. .015 MAX.

CODE
 CD 031-0034-0001



(MATERIAL, FINISH)

- ① F.M. BRASS PER QQ-B-626
- ② TEFLON PER L-P 403
- ③ GOLD PLATE PER MIL-G-45204 TYPE II, CLASS I
- ④ SILVER PLATE .0002-.0004 PER QQ-S-365, TYPE II, GRADE A
- ⑤ 10-32UNF-2AHD
- ⑥ NEOPRENE, MIL-R-3065
- ⑦ BERYLLIUM COPPER BERYLCO 33-25

NOTES:

1. 031-0034-0001 SAME AS 031-0034 E, 31-34

THIS CONNECTOR MATES WITH ALL 50 SERIES SCREW ON TYPE PLUGS AS LISTED IN MICRODOT CATALOG.

1-1532138-6

M	ECN 38686 REV. UPDATE	JK	3/12	PS
L	REV. LETTER UPDATE ECO 19413	JK	8/19/75	JK
K	REVISED & REDRAWN ECO 17442	NT	11/1/74	JK
J	SEE ECO 16625	JK	7-20-73	JK
H	REV. LETTER UPDATED ECO 16090	JK	8/19/75	JK
G	MAT'L & FINISH CALL OUT UP-DATED ADD. CABLE ACC. DIM'S, ECO 7668	JK	1/17/63	JK
F	LAMP RING 003-0163 REPLACED BY 003-0805-0001 COMPONENT NO. UP-DATED ECO 6154	JK	3/1/67	JK
E	PART NUMBER & B.R. CAP PART NO. UPDATED, ADDED NOTE 1 (ECO 5872)	EJ	2/21/67	JK

STANDARD TOLERANCES UNLESS OTHERWISE SPECIFIED
 DEC. ±
 FRAC. ± 1/32
 ANGLES ±
 ECCENTRICITY
 MAX. T. I. R.
 HOLE DIA. + .002
 — .001

MICRODOT INC.
 SOUTH PASADENA, CALIF.

SURFACE TREATMENT	NOTED	APP.	JK
MATERIAL	NOTED	APP.	JK
SCALE	1:1	CHECKED BY	JK
WT.		DRAWN BY	M7577
DATE	7-15-60		
DRAWING NUMBER			