



GE SERIES

# SNAP-IN MOUNTING HIGH PERFORMANCE IEC CONNECTOR FILTERS



## INTRODUCTIONS

1. Snap-in mounting type to reduce labor cost. Compact and reliable at low cost.
2. Bleeder resistor can be added with suffix "-R" on part numbers, except G3H,G3V,W3V,G3J,W3J,types.
3. Optional side snap-in mounting clip type with suffix (H) on part numbers.
4. All part numbers are UL recognized, CSA certified and VDE approved.
5. With optional Y-Cap from 100pF to 3300pF.

## COMPONENTS

| PART NO.           | Cx (uF) | L (mH) | Cy (pF) | R (Ω) |
|--------------------|---------|--------|---------|-------|
| 01GENG3E/W3E/-R    | 0.1     | 6.5    | 2200    | 1M    |
| 03GENG3E/W3E/-R    |         | 2.5    |         |       |
| 03GENG3U/-R        |         | 2.5    |         |       |
| •03GENW3ES/-R      |         | 2.5    |         |       |
| •03GENG3Q/W3Q/-R   |         | 4      |         |       |
| 06GENG3E/W3E/-R    |         | 0.8    |         |       |
| 06GENG3U/-R        |         | 0.8    |         |       |
| ••06GENG3Q/W3Q/-R  |         | 1.5    |         |       |
| 06GENW3ES/-R       |         | 0.8    |         |       |
| 10GENG3E/W3E/-R    |         | 0.2    |         |       |
| •••10GENG3C/W3C/-R |         | 0.4    |         |       |
| *10GENG3Q/W3Q/-R   |         | 0.3    |         |       |
| 10GENG3U/-R        |         | 0.3    |         |       |
| 10GENW3ES/-R       |         | 0.2    |         |       |
| **15GENG3E/W3E/-R  |         | 0.2    |         |       |
| ***20GENG3E/W3E/-R |         | 0.3    |         |       |

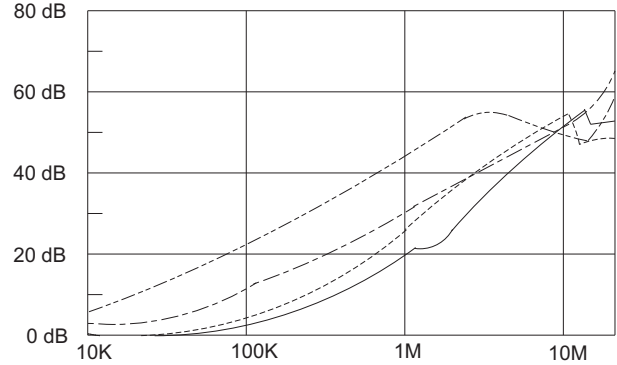
- UL, CSA approved to 4A 115/250V
- UL, CSA approved to 8A 115/250V
- VDE approved to 8A/250V
- \* UL, CSA approved to 13A 115/250V
- \*\* VDE approved to 10A/250V
- \*\*\* VDE approved to 16A/250V

## SPECIFICATIONS

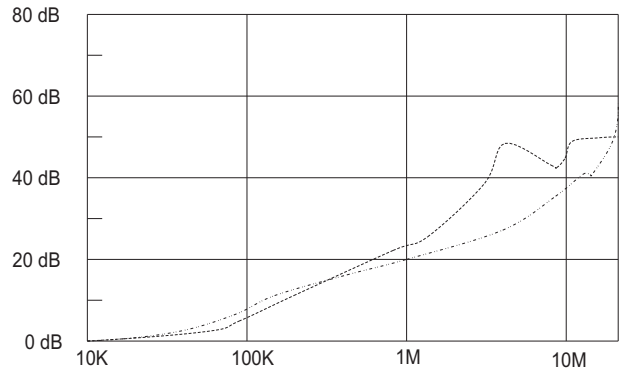
1. Maximum leakage current each line-to-ground @ 115VAC 60Hz: 0.2mA @ 250VAC 50Hz: 0.4mA
2. Hipot rating (one minute) line-to-ground: 2250VDC line-to-line: 1450VDC
3. Operating frequency: 50/60Hz
4. Rated voltage: 115/250VAC

## INSERTION LOSS (TYPICAL)

03GENG3E ----- COMMON MODE ----- DIFF. MODE  
 06GENG3E ----- COMMON MODE ----- DIFF. MODE



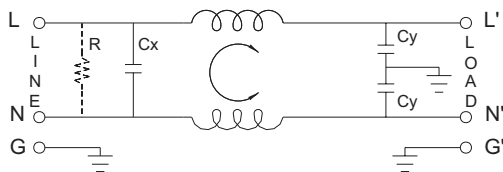
20GENG3E ----- COMMON MODE ----- DIFF. MODE



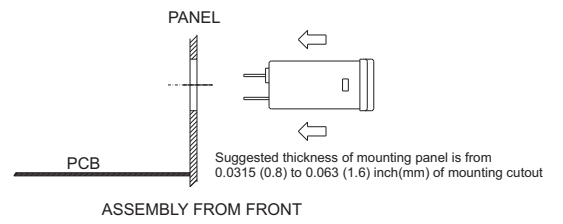
## MINIMUM INSERTION LOSS IN dB

| COMMON MODE (L-G) IN 50 OHM SYSTEM |               |     |     |     |    |    |
|------------------------------------|---------------|-----|-----|-----|----|----|
| CURRENT RATING                     | FREQUENCY-MHz |     |     |     |    |    |
|                                    | .15           | .50 | 1.0 | 5.0 | 10 | 30 |
| 1A                                 | 28            | 35  | 38  | 38  | 40 | 40 |
| 3A                                 | 20            | 25  | 30  | 38  | 40 | 40 |
| 6A                                 | 12            | 18  | 24  | 35  | 40 | 40 |
| 6A (G3Q)                           | 15            | 20  | 24  | 35  | 40 | 55 |
| 10A                                | 4             | 10  | 13  | 28  | 35 | 40 |
| 10A (G3C)                          | 10            | 15  | 15  | 25  | 30 | 35 |
| 10A (G3Q)                          | 10            | 12  | 15  | 30  | 32 | 45 |
| 15A                                | 4             | 10  | 13  | 28  | 35 | 40 |
| 20A                                | 8             | 10  | 15  | 25  | 30 | 35 |

## ELECTRICAL SCHEMATIC



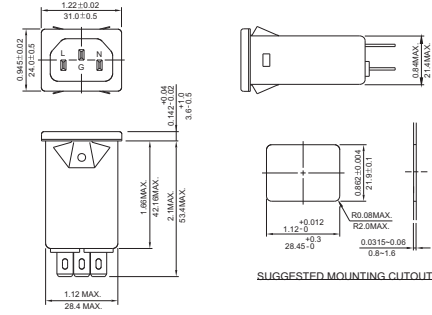
R: 1MΩ/-R ONLY



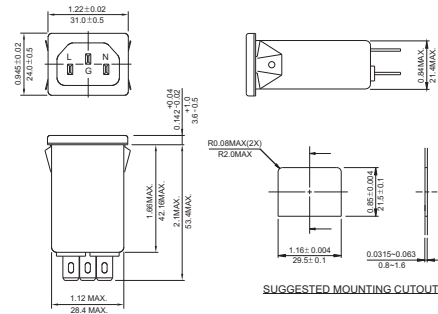
## MECHANICAL CONSTRUCTION



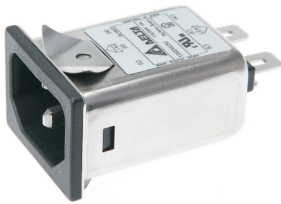
NG3E, NG3C, NG3Q (Optional wire type)



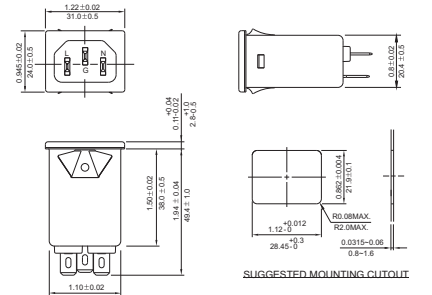
NG3E(H), NG3C(H), NG3Q(H) (Optional wire type)



GENG3E

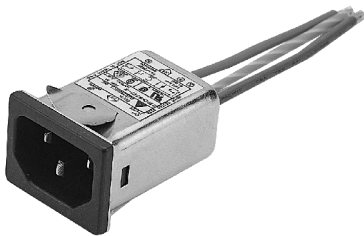


NG3U (With Compact Size)

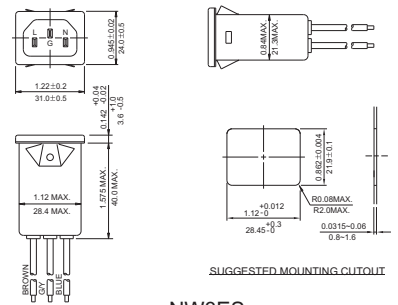


GENG3E(H)

NG3U



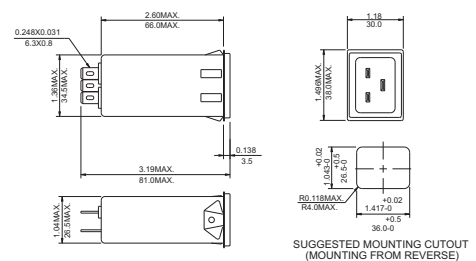
NW3ES



NW3ES



20GENG3E (Optional wire type)



UNIT: INCH  
mm

WIRE LENGTH : 4.0" MIN.