



GK SERIES

# MOUNTING HIGH PERFORMANCE IEC CONNECTOR FILTERS



## INTRODUCTIONS

1. Specially designed with additional X capacitor providing most effective EMI suppression for low frequency noise (ranged 150KHz-500KHz).
2. Bleeder resistor can be added with suffix "-R" on part numbers.
3. With optional Y capacitor from 100pF to 3300pF.
4. All part numbers are UL recognized, CSA certified and VDE approved.

## SPECIFICATIONS

1. Maximum leakage current each line-to-ground @ 115VAC 60Hz: 0.20mA @ 250VAC 50Hz: 0.40mA
2. Hipot rating (one minute) line-to-ground: 2250VDC line-to-line: 1450VDC
3. Operating frequency: 50/60Hz
4. Rated voltage: 115/250VAC

## COMPONENTS

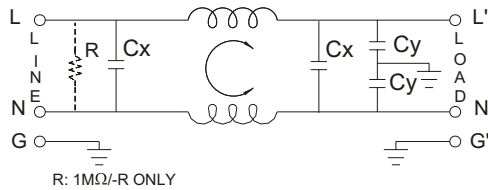
PART NO.	L (mH)	Cx (uF)	Cy (pF)
03GKEG3E/03GKEW3E	3.1	0.1	2200
06GKEG3E/06GKEW3E	1.2	0.1	
10GKEG3E/10GKEW3E	0.36	0.1	

• VDE approved to 9A/250V

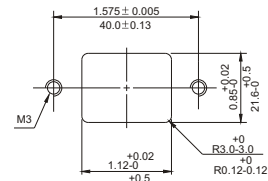
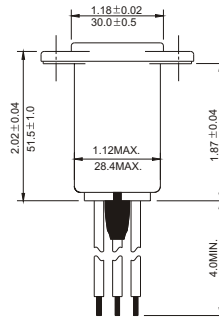
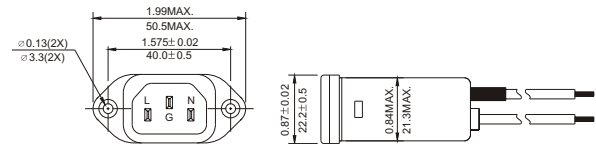
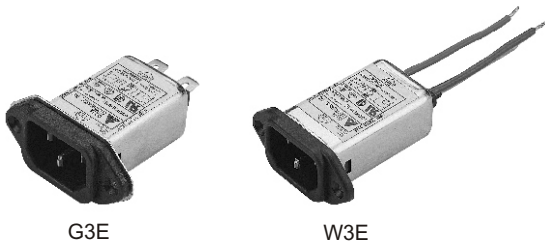
## MINIMUM INSERTION LOSS IN dB

COMMON MODE (L-G) IN 50 OHM SYSTEM						
PART NO.	FREQUENCY-MHz					
	.15	.50	1.0	5.0	10	30
03GKEG3E/03GKEW3E	20	25	30	40	40	50
06GKEG3E/06GKEW3E	12	20	25	35	45	45
10GKEG3E/10GKEW3E	7	10	15	30	35	50
DIFFERENTIAL MODE (L-L) IN 50 OHM SYSTEM						
03GKEG3E/03GKEW3E	5	25	50	55	53	45
06GKEG3E/06GKEW3E	7	20	35	50	50	40
10GKEG3E/10GKEW3E	7	9	25	50	45	35

## ELECTRICAL SCHEMATIC



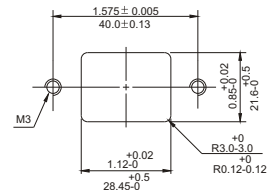
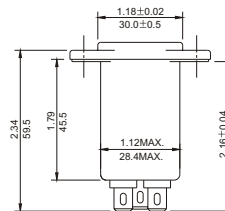
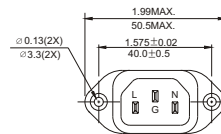
## MECHANICAL CONSTRUCTION



SUGGESTED MOUNTING CUTOUT

WIRE LENGTH : 4.0" MIN.

W3E



SUGGESTED MOUNTING CUTOUT

G3E

UNIT: INCH/mm