



GK SERIES

MOUNTING HIGH PERFORMANCE IEC CONNECTOR FILTERS



INTRODUCTIONS

1. Specially designed with additional X capacitor providing most effective EMI suppression for low frequency noise (ranged 150KHz-500KHz).
2. Bleeder resistor can be added with suffix "-R" on part numbers.
3. With optional Y capacitor from 100pF to 3300pF.
4. All part numbers are UL recognized, CSA certified and VDE approved.

SPECIFICATIONS

1. Maximum leakage current each line-to-ground @ 115VAC 60Hz: 0.20mA @ 250VAC 50Hz: 0.40mA
2. Hipot rating (one minute) line-to-ground: 2250VDC line-to-line: 1450VDC
3. Operating frequency: 50/60Hz
4. Rated voltage: 115/250VAC

COMPONENTS

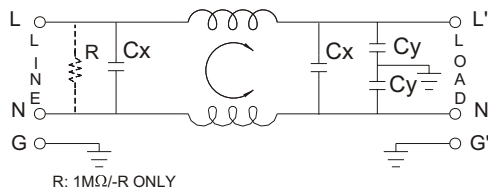
| PART NO. | L (mH) | Cx (uF) | Cy (pF) |
|-------------------|--------|---------|---------|
| 03GKEG3E/03GKEW3E | 3.1 | 0.1 | 2200 |
| 06GKEG3E/06GKEW3E | 1.2 | 0.1 | |
| 10GKEG3E/10GKEW3E | 0.36 | 0.1 | |

• VDE approved to 9A/250V

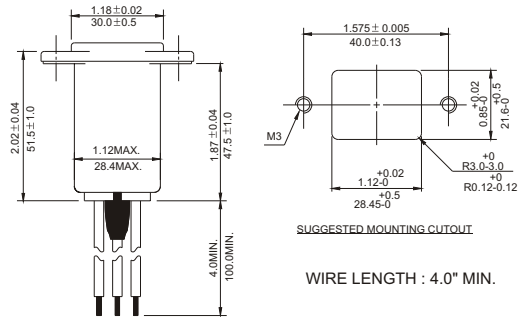
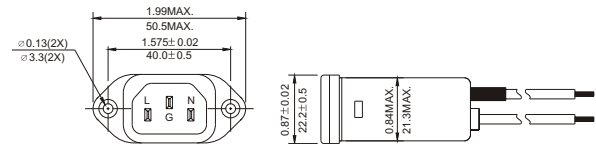
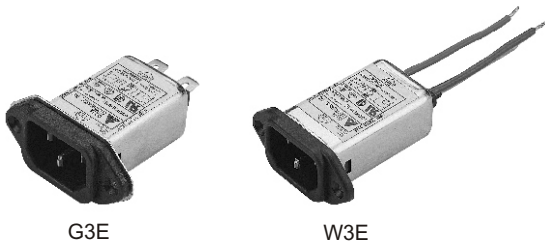
MINIMUM INSERTION LOSS IN dB

| COMMON MODE (L-G) IN 50 OHM SYSTEM | | | | | | |
|--|---------------|-----|-----|-----|----|----|
| PART NO. | FREQUENCY-MHz | | | | | |
| | .15 | .50 | 1.0 | 5.0 | 10 | 30 |
| 03GKEG3E/03GKEW3E | 20 | 25 | 30 | 40 | 40 | 50 |
| 06GKEG3E/06GKEW3E | 12 | 20 | 25 | 35 | 45 | 45 |
| 10GKEG3E/10GKEW3E | 7 | 10 | 15 | 30 | 35 | 50 |
| DIFFERENTIAL MODE (L-L) IN 50 OHM SYSTEM | | | | | | |
| 03GKEG3E/03GKEW3E | 5 | 25 | 50 | 55 | 53 | 45 |
| 06GKEG3E/06GKEW3E | 7 | 20 | 35 | 50 | 50 | 40 |
| 10GKEG3E/10GKEW3E | 7 | 9 | 25 | 50 | 45 | 35 |

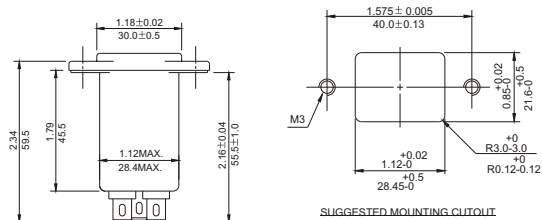
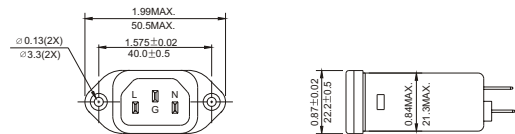
ELECTRICAL SCHEMATIC



MECHANICAL CONSTRUCTION



W3E



G3E

UNIT: INCH/mm