

INTRODUCTIONS

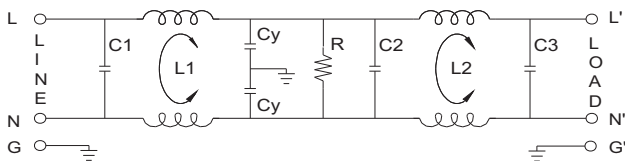
1. Two-stage filters provide high performance in suppressing both line-to-line and line-to-ground noise.
2. All part numbers are UL recognized, CSA certified and VDE approved.

COMPONENTS

PART NO.	C1,C2,C3(uF)	L1,L2(mH)
02DRCG5	0.1	2.4
02DRCW5		
03DRCG5	0.22	1.7
03DRCW5		
03DRDG3S		2.8
03DRDW3S		
05DRCG5		1.6
05DRCW5		
05DRDG3S	1.3	
05DRDW3S	1.3	
10DRCG5	0.1	1.0
10DRCS5		
10DRCW5		
*15DRCG5	0.1	0.9
•20DRGG5	0.22	1.0
•20DRGS5		

R: 2.2MΩ, Cy: 3300pF.
 * No safety approval yet, R: 1.0MΩ
 • VDE approved to 16A/250VAC, C2: 0.33 uF

ELECTRICAL SCHEMATIC



SPECIFICATIONS

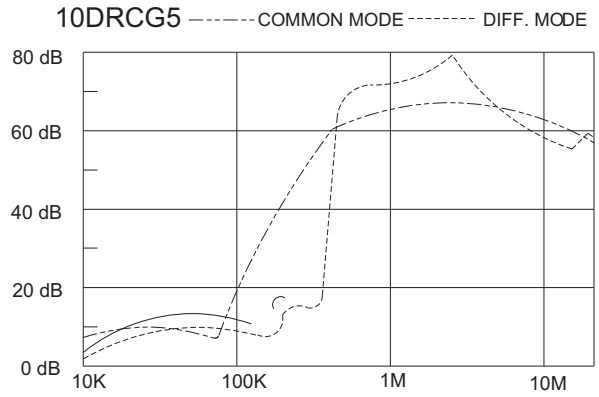
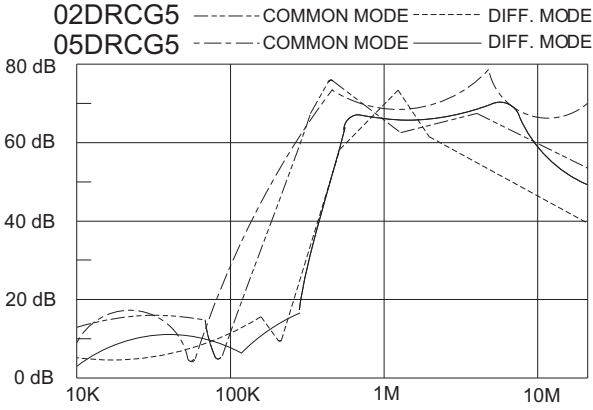
1. Maximum leakage current each line-to-ground @ 115VAC 60Hz: 0.25mA @ 250VAC 50Hz: 0.45mA
2. Hipot rating (one minute) line-to-ground: 2250VDC line-to-line: 1450VDC
3. Operating frequency: 50/60Hz
4. Rated voltage: 115/250VAC

SERIES DIMENSIONS

PART NO.	DIMENSIONS IN INCHES/mm					
	A	B	C	D	E	
02DRCG5	3.25	1.82	1.15	2.38	2.77	
	82.5				70.4	
02DRCW5	2.08	46.2		2.77	60.5	70.4
	52.8					
03DRCG5	3.75	2.02		2.94	74.7	3.34
	95.2	51.3				84.8
03DRCW5	2.58	2.04	2.94	74.7	3.34	
	65.5	51.8			84.8	
03DRDG3S	3.14	2.02	1.28	1.575	0.61	
	79.8				15.5	
03DRDW3S	2.55		51.3	1.27	40.0	15.5
	64.8					
05DRCG5	3.75		51.3	1.15	2.94	3.34
	95.2					84.8
05DRCW5	2.58	2.04	2.94	74.7	3.34	
	65.5	51.8			84.8	
05DRDG3S	3.14	2.02	1.27	1.575	0.61	
	79.8				15.5	
05DRDW3S	2.55		51.3	1.27	40.0	15.5
	64.8					
10DRCG5	3.75		51.3	1.52	2.94	3.34
	95.2					84.5
10DRCS5	3.87	51.3	38.6	74.6	84.5	
	98.3					
10DRCW5	2.50	51.3	38.6	74.6	84.5	
	63.5					
15DRCG5	3.75	2.08	1.79	2.94	3.36	
	95.2	52.8	45.5	74.7	85.3	
20DRGG5	5.14	3.33	1.52	3.75	4.14	
	130.5	84.6	38.6	95.3	105.1	
20DRGS5						

GENERAL PURPOSE TWO-STAGE FILTERS

INSERTION LOSS (TYPICAL)

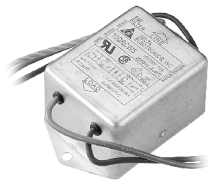


MINIMUM INSERTION LOSS IN dB

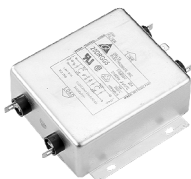
COMMON MODE (L-G) IN 50 OHM SYSTEM						
CURRENT RATING	FREQUENCY-MHz					
	.15	.50	1.0	5.0	10	30
2A	40	60	65	55	50	40
3, 5A	40	60	65	65	60	45
3, 5A(S)	38	60	65	55	45	40
10A	30	60	65	50	45	40
15A	23	45	50	45	40	30
20A	20	35	40	50	55	40

DIFFERENTIAL MODE (L-L) IN 50 OHM SYSTEM						
2A	5	50	65	60	54	46
3, 5A	12	60	65	60	54	46
3, 5A(S)	10	65	70	70	60	50
10A	7	53	60	55	45	40
15A	8	30	40	45	40	40
20A	7	55	50	50	55	40

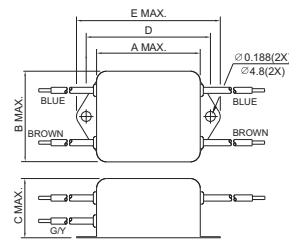
MECHANICAL CONSTRUCTION



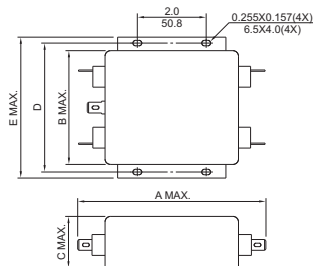
CW5



GG5



WIRE LENGTH : 4.0" MIN.



UNIT: $\frac{\text{INCH}}{\text{mm}}$