



GE SERIES

HIGH PERFORMANCE IEC CONNECTOR FILTERS



INTRODUCTIONS

1. A high performance general purpose filter with an IEC connector providing effective EMI suppression.
2. Bleeder resistor can be added with suffix "-R" on part numbers, except "G3H", "G3V", "W3V", "G3J", "W3J", types.
3. All part numbers are UL recognized, CAS certified and VDE approved.
4. With optional Y-Cap from 100pF to 3300pF.

COMPONENTS

| PART NO. | Cx (uF) | L (mH) | Cy (pF) | R (Ω) | |
|----------------------|---------|--------|---------|-------|----|
| 01GEEG3E/W3E/-R | 0.1 | 6.5 | 2200 | 1M | |
| 01GEEG3H/G3V/W3V | | 3 | 3300 | - | |
| 01GEEG3S/-R | | 10.5 | | | |
| 03GEEG3E/W3E/W3ES/-R | | 2.5 | 2.2 | 2200 | 1M |
| 03GEEG3U/-R | | | | | |
| •03GEEW3ES/-R | | 4 | 2.4 | 3300 | - |
| 03GEEG3H/G3V/W3V | | | | | |
| 03GEEG3S/-R | | 2.4 | 2.2 | 1M | |
| •03GEEG3Q/W3Q-R | | | | | |
| 03GEEW3J | | 0.8 | 2.2 | - | |
| 03GEHG3J | | | | | |
| 06GEEG3E/W3E/W3ES/-R | | 1.05 | 0.2 | 2200 | 1M |
| 06GEEG3U/-R | | | | | |
| 06GEEG3H/G3V/W3V | | 1.5 | 0.3 | 3300 | - |
| 06GEEG3S/-R | | | | | |
| ••06GEEG3Q/W3Q-R | | 0.4 | 0.2 | | |
| •••10GEEG3C/W3C/-R | | | | | |
| 10GEEG3E/W3E/W3ES/-R | | 0.2 | 0.3 | | |
| 10GEEG3S/-R | | | | | |
| *10GEEG3Q/W3Q-R | | 0.2 | 0.3 | | |
| 10GEEG3U/-R | | | | | |
| **15GEEG3E/W3E/-R | 0.3 | 0.3 | | | |
| ***20GEEG3E/W3E/-R | | | | | |

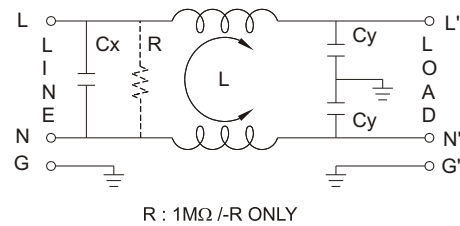
- UL, CSA approved to 4A 115/250V
- UL, CSA approved to 8A 115/250V
- VDE approved to 8A/250V

- * UL, CSA approved to 13A 115/250V
- ** VDE approved to 10A/250V
- *** VDE approved to 16A/250V

SPECIFICATIONS

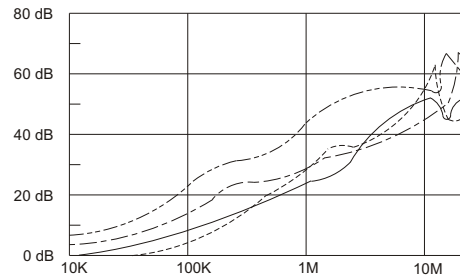
1. Maximum leakage current each line-to-ground @ 115VAC 60Hz: 0.25mA @ 250VAC 50Hz: 0.45mA
2. Hipot rating (one minute) line-to-ground: 2250VDC line-to-line: 1450VDC
3. Operating frequency: 50/60Hz
4. Rated voltage: 115/250VAC

ELECTRICAL SCHEMATIC

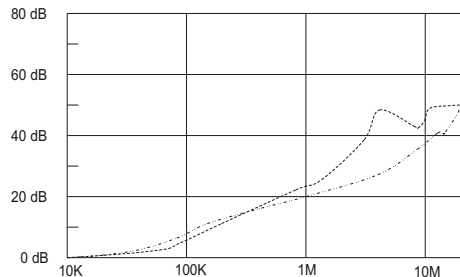


INSERTION LOSS (TYPICAL)

03GEEG3E ----- COMMON MODE ----- DIFF. MODE
 06GEEG3E ----- COMMON MODE ----- DIFF. MODE

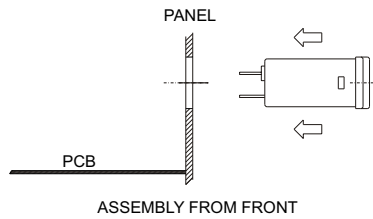


20GEEG3E ----- COMMON MODE ----- DIFF. MODE



MINIMUM INSERTION LOSS IN dB

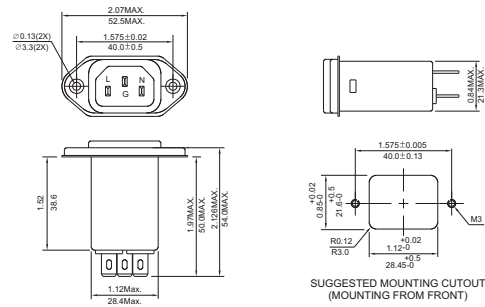
| CURRENT RATING | COMMON MODE (L-G) IN 50 OHM SYSTEM | | | | | |
|----------------|------------------------------------|-----|-----|-----|----|----|
| | FREQUENCY-MHz | | | | | |
| | .15 | .50 | 1.0 | 5.0 | 10 | 30 |
| 1A(E)(S) | 28 | 35 | 38 | 38 | 40 | 40 |
| 1A(H) | 26 | 36 | 44 | 54 | 55 | 55 |
| 1A(G3V) | 24 | 35 | 42 | 50 | 55 | 55 |
| 1A(W3V) | 24 | 35 | 42 | 50 | 55 | 55 |
| 3A(E)(S)(Q) | 20 | 25 | 30 | 38 | 40 | 40 |
| 3A(H) | 24 | 30 | 38 | 50 | 55 | 40 |
| 3A(G3J,W3J) | 20 | 25 | 30 | 38 | 40 | 40 |
| 3A(G3V)(W3V) | 20 | 29 | 36 | 48 | 46 | 50 |
| 6A(E)(S) | 12 | 18 | 24 | 35 | 40 | 40 |
| 6A(H) | 15 | 25 | 28 | 35 | 45 | 45 |
| 6A(Q) | 15 | 20 | 24 | 35 | 40 | 55 |
| 6A(G3V)(W3V) | 14 | 23 | 30 | 42 | 45 | 50 |
| 10A(E)(S) | 4 | 10 | 13 | 28 | 35 | 40 |
| 10A(C) | 10 | 15 | 15 | 25 | 30 | 35 |
| 10A(Q) | 10 | 12 | 15 | 30 | 32 | 45 |
| 15A(E) | 4 | 10 | 13 | 28 | 35 | 40 |
| 20A | 8 | 10 | 15 | 25 | 30 | 35 |



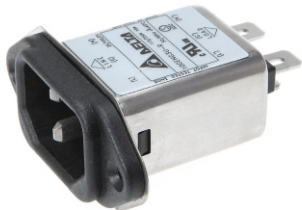
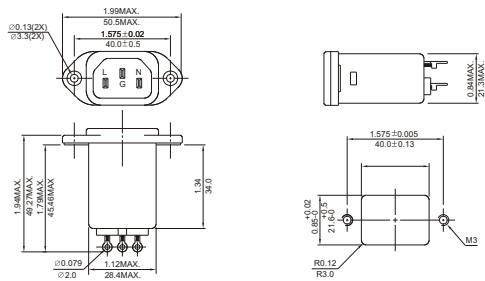
MECHANICAL CONSTRUCTION



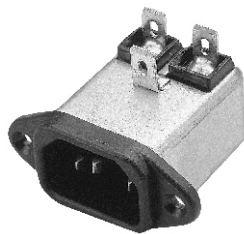
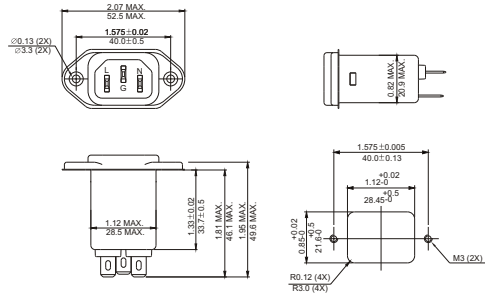
EG3E, EG3Q (Optional soldering lug or wire type)



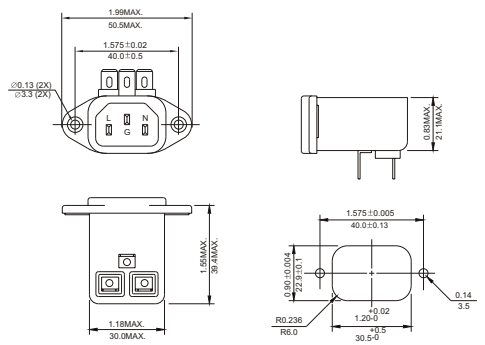
EG3S



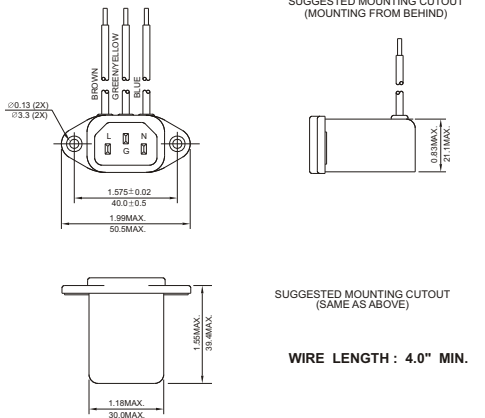
EG3U (With Compact Size)



EG3V



EW3V



UNIT: INCH
mm

WIRE LENGTH : 4.0" MIN.

IEC INLET FILTERS