



GK SERIES

# MOUNTING HIGH PERFORMANCE IEC CONNECTOR FILTERS



## INTRODUCTIONS

1. Specially designed with additional X capacitor providing most effective EMI suppression for low frequency noise (ranged 150KHz-500KHz).
2. Bleeder resistor can be added with suffix "-R" on part numbers.
3. With optional Y capacitor from 100pF to 3300pF.
4. All part numbers are UL recognized, CSA certified and VDE approved.

## SPECIFICATIONS

1. Maximum leakage current each line-to-ground @ 115VAC 60Hz: 0.20mA @ 250VAC 50Hz: 0.40mA
2. Hipot rating (one minute) line-to-ground: 2250VDC line-to-line: 1450VDC
3. Operating frequency: 50/60Hz
4. Rated voltage: 115/250VAC

## COMPONENTS

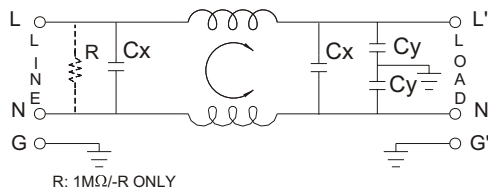
| PART NO.          | L (mH) | Cx (uF) | Cy (pF) |
|-------------------|--------|---------|---------|
| 03GKEG3E/03GKEW3E | 3.1    | 0.1     | 2200    |
| 06GKEG3E/06GKEW3E | 1.2    | 0.1     |         |
| 10GKEG3E/10GKEW3E | 0.36   | 0.1     |         |

• VDE approved to 9A/250V

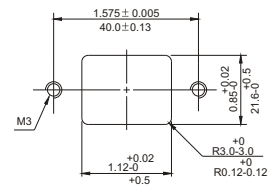
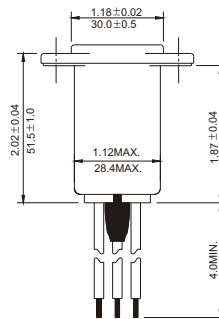
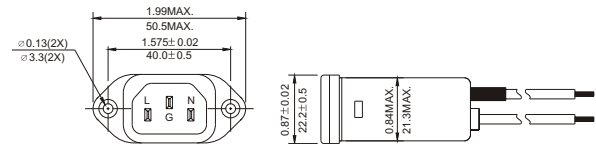
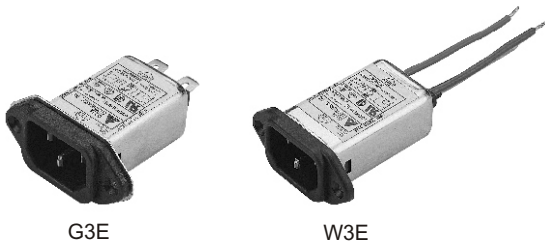
## MINIMUM INSERTION LOSS IN dB

| COMMON MODE (L-G) IN 50 OHM SYSTEM       |               |     |     |     |    |    |
|--|---------------|-----|-----|-----|----|----|
| PART NO.                                 | FREQUENCY-MHz |     |     |     |    |    |
|  | .15           | .50 | 1.0 | 5.0 | 10 | 30 |
| 03GKEG3E/03GKEW3E                        | 20            | 25  | 30  | 40  | 40 | 50 |
| 06GKEG3E/06GKEW3E                        | 12            | 20  | 25  | 35  | 45 | 45 |
| 10GKEG3E/10GKEW3E                        | 7             | 10  | 15  | 30  | 35 | 50 |
| DIFFERENTIAL MODE (L-L) IN 50 OHM SYSTEM |               |     |     |     |    |    |
| 03GKEG3E/03GKEW3E                        | 5             | 25  | 50  | 55  | 53 | 45 |
| 06GKEG3E/06GKEW3E                        | 7             | 20  | 35  | 50  | 50 | 40 |
| 10GKEG3E/10GKEW3E                        | 7             | 9   | 25  | 50  | 45 | 35 |

## ELECTRICAL SCHEMATIC



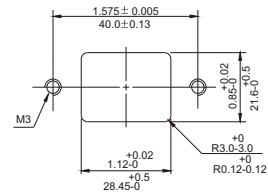
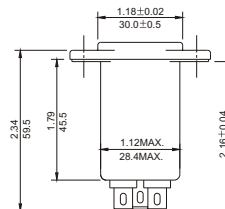
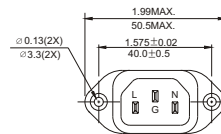
## MECHANICAL CONSTRUCTION



SUGGESTED MOUNTING CUTOUT

WIRE LENGTH : 4.0" MIN.

W3E



SUGGESTED MOUNTING CUTOUT

G3E

UNIT: INCH/mm