



GKN SERIES

SNAP-IN MOUNTING HIGH PERFORMANCE IEC CONNECTOR FILTERS



INTRODUCTIONS

1. Specially designed with additional X capacitor providing most effective EMI suppression for low frequency noise (ranged 150KHz-500KHz).
2. Bleeder resistor can be added with suffix "-R" on part numbers.
3. With optional 3300pF Y capacitor instead of 2200pF.
4. With optional 0.1uF X capacitor instead of 0.047uF.
5. With optional solder lug connection instead of fast on terminal.
6. All part numbers are UL recongnized, CSA certified and VDE approved.

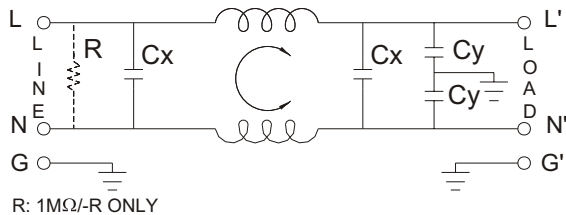
COMPONENTS

PART Number	L (mH)	Cx (uF)	Cy (pF)
03GKNG3D/03GKNW3D	3.1	0.047	2200
03GKNG3E/03GKNW3E		0.1	
06GKNG3D/06GKNW3D	1.2	0.047	
06GKNG3E/06GKNW3E		0.1	
10GKNG3D/10GKNW3D	0.36	0.047	
10GKNG3E/10GKNW3E		0.1	

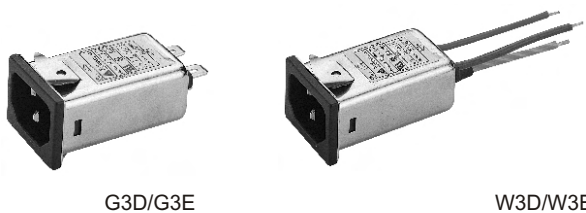
MINIMUM INSERTION LOSS IN dB

COMMON MODE (L-G) IN 50 OHM SYSTEM						
PART NO.	FREQUENCY-MHz					
	.15	.50	1.0	5.0	10	30
03GKNG3D/03GKNW3D	20	25	30	40	40	50
03GKNG3E/03GKNW3E	20	30	30	40	40	50
06GKNG3D/06GKNW3D	12	20	25	40	40	50
06GKNG3E/06GKNW3E	12	20	25	40	40	50
10GKNG3D/10GKNW3D	5	10	15	30	40	50
10GKNG3E/10GKNW3E	5	7	15	30	35	50
DIFFERENTIAL MODE (L-L) IN 50 OHM SYSTEM						
03GKNG3D/03GKNW3D	3	13	30	53	50	40
03GKNG3E/03GKNW3E	5	30	45	55	50	45
06GKNG3D/06GKNW3D	3	3	20	50	50	40
06GKNG3E/06GKNW3E	7	20	35	50	50	45
10GKNG3D/10GKNW3D	5	7	10	50	40	45
10GKNG3E/10GKNW3E	7	7	25	50	45	35

ELECTRICAL SCHEMATIC



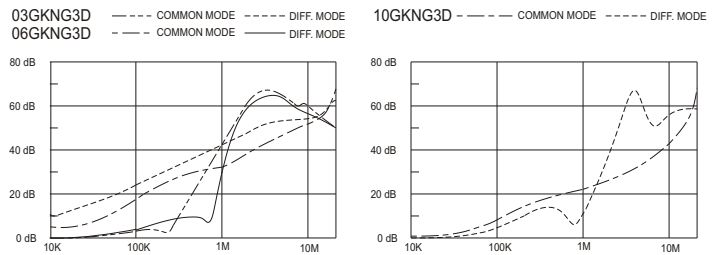
MECHANICAL CONSTRUCTION



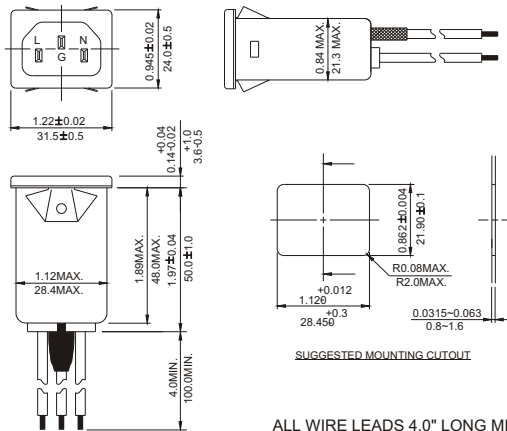
SPECIFICATIONS

1. Maximum leakage current each line-to-ground @ 115VAC 60Hz: 0.2mA @ 250VAC 50Hz: 0.4mA
2. Hipot rating (one minute) line-to-ground: 2250VDC line-to-line: 1450VDC
3. Operating frequency: 50/60Hz
4. Rated voltage: 115/250VAC

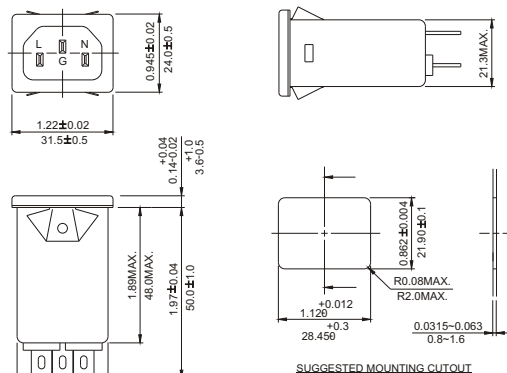
INSERTION LOSS (TYPICAL)



Suggested thickness of mounting panel is from 0.0315 (0.8) to 0.063 (1.6) inch(mm) of mounting cutout



W3D/W3E



G3D/G3E

UNIT: INCH/mm