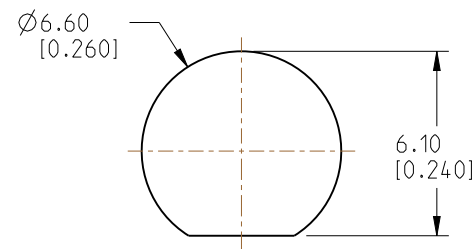


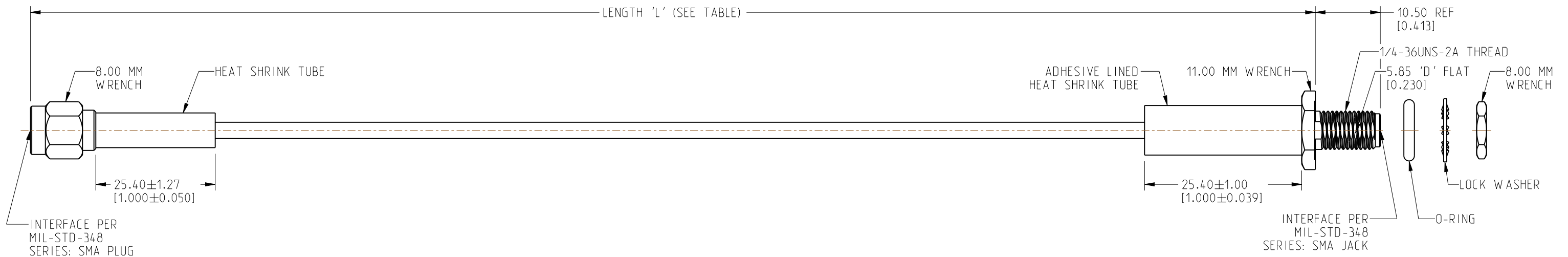
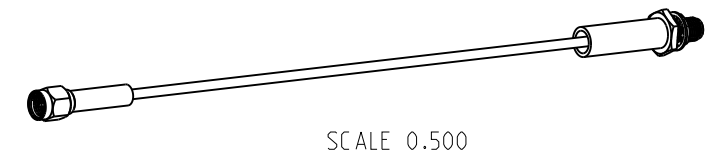
NOTES:

1. MATERIALS AND FINISHES:  
SMA STR PLUG - BRASS, GOLD PLATING  
SMA STR BHD JACK IP 67 - BRASS, GOLD PLATING  
CABLE - RG 316
2. ELECTRICAL:  
A. IMPEDANCE: 50 OHM
3. PACKAGING:  
A. QUANTITY: SINGLE PACK  
B. MARKING: BAG TO BE MARKED  
"AMPHENOL RF, 95-902-569-XXX AND DATE CODE"

REVISIONS				
REV	DESCRIPTION	DATE	ECN	BY
A	RELEASE TO MFG.	17-JAN-22	16087	DK



**RECOMMENDED MOUNTING HOLE DIMNSIONS**



LENGTH TABLE		
PART NUMBER (IMPERIAL)	PART NUMBER (METRIC)	LENGTH 'L' IN INCHES [METERS]
95-902-569-006	-	6.00 [0.152]
-	95-902-569M025	9.84 [0.250]
95-902-569-012	-	12.00 [0.305]
95-902-569-018	-	18.00 [0.457]
-	95-902-569M050	19.69 [0.500]
95-902-569-024	-	24.00 [0.610]
-	95-902-569M075	29.53 [0.750]
95-902-569-036	-	36.00 [0.914]
-	95-902-569M100	39.37 [1.000]
95-902-569-048	-	48.00 [1.219]

TOLERANCE TABLE	
LENGTH IN INCHES/FT [METERS]	TOLERANCE
0" - 23.90" [0 - 0.607]	±0.25" [0.006]
24.00" - 59.00" [0.610 - 1.499]	±0.50" [0.013]
5.0' - 24.9' [1.524 - 7.617]	±2.5%
25.0' & UP [7.620 & UP]	±5.0%

DESIGN REQUIREMENTS:

- |   |  |
|---|--|
| <input checked="" type="checkbox"/> FREQUENCY: DC - 6 GHz | <input checked="" type="checkbox"/> CONTINUITY       |
| <input type="checkbox"/> VSWR: _____ 1 MAX.               | <input checked="" type="checkbox"/> HI-POT: 750 VRMS |
| <input type="checkbox"/> INS. LOSS: _____ dB MAX.         | <input type="checkbox"/> OTHER                       |

**CUSTOMER OUTLINE DRAWING**  
ALL OTHER SHEETS ARE FOR INTERNAL USE ONLY

NOTICE: These drawings, specifications, or other data (1) are, and remain the property of Amphenol corp. (2) must be returned upon request; and (3) are confidential and not to be disclosed to any person other than those to whom they are given by Amphenol Corp. The furnishing of these drawings, specifications, or other data by Amphenol Corp., or to any other person to anyone for any purpose is not to be regarded by implication or otherwise in any manner licensing, granting rights to permitting such holder or any other person to manufacture, use or sell any product, process or design, patented or otherwise, that may in any way be related to or disclosed by said drawings, specifications, or other data.		UNLESS OTHERWISE SPECIFIED DIMENSIONS ARE METRIC [INCHES] AND TOLERANCES ARE: <0.5mm = ±0.05mm [ $\pm 0.002$ ] 0.5 - 6mm = ±0.1mm [ $\pm 0.020 - 0.236 = \pm 0.004$ ] >6.00 - 30mm = ±0.2mm [ $\pm 0.236 - 1.181 = \pm 0.008$ ] >30.00 - 120mm = ±0.3mm [ $\pm 1.181 - 4.725 = \pm 0.012$ ]		MATERIAL SEE NOTES		TITLE SMA STR PLUG TO SMA STR BHD JACK IP 67 USING RG 316 CABLE VARIOUS LENGTH		<p style="text-align: center;"><b>Amphenol RF</b></p> <table border="1"> <tr> <td>SIZE</td> <td>DRAWING NO. 95-902-569-XXX</td> <td>REV</td> </tr> <tr> <td></td> <td>ITEM NO. 95-902-569-XXX</td> <td></td> </tr> <tr> <td></td> <td>PART NO. 95-902-569-XXX</td> <td></td> </tr> </table>		SIZE	DRAWING NO. 95-902-569-XXX	REV		ITEM NO. 95-902-569-XXX			PART NO. 95-902-569-XXX	
SIZE	DRAWING NO. 95-902-569-XXX	REV																
	ITEM NO. 95-902-569-XXX																	
	PART NO. 95-902-569-XXX																	
THIRD ANGLE PROJ.	REFERENCE	ENGR.1 DINESH A	ENGR.2	DATE 13-DEC-21	SHEET NO. 2 OF 2	SCALE: 1.6:1.0	<table border="1"> <tr> <td>B</td> <td>A</td> </tr> </table>		B	A								
B	A																	