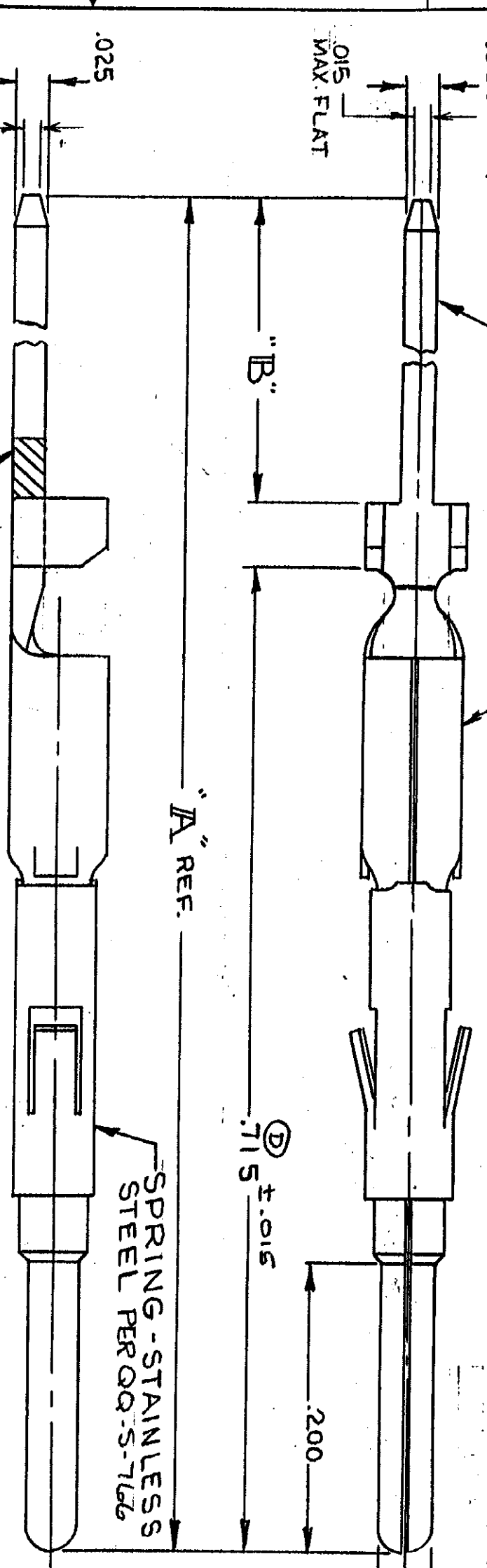


DRAWING MADE IN AMERICAN PROJECTION

© 1970 BY AMP INCORPORATED. ALL RIGHTS RESERVED. AMP PRODUCTS COVERED BY PATENTS. RIGHTS FOR PATENTS PENDING.

Unpublished copy not to be reproduced without written permission of AMP Inc.

ZONE	LTR	DESCRIPTION	DATE	APPROVED
F	ADDED	PER ECV E-663	9-28-72	[Signature]
G	REV PER ECV J-260		2/5/82	[Signature]
H	OBSOLETE	-8 47 --0 PER ECV R-2733	3-2-87	[Signature]
J	REV PER DF-2362	JW	11-3-80	NSR
K	REQUIMATE	-8 47-0 DF4925	2-19-92	ADM
L	REV PER DF-5580		9-9-92	DKP



* DENOTES RELEASED ITEMS.

PART NO.	"A"	"B"	CONTACT FINISH	NO. OF TERMINATION	CONTACT PART NO.
1-205171-2	1.450	.685	.000030 MIN GOLD / .000050 MIN NI	3 *	1-204329-2
1-205171-1	1.236	.471	.000030 MIN GOLD / .000050 MIN NI	2 *	1-204329-1
1-205171-0	1.022	.257	.000030 MIN GOLD / .000050 MIN NI	1 *	1-204329-0
205171-9	1.450	.685	SELECTIVE .000030 GOLD / .000030 NICKEL	3 *	204329-9
205171-8	1.236	.471	SELECTIVE .000030 GOLD / .000030 NICKEL	2 *	204329-8
205171-7	1.022	.257	SELECTIVE .000030 GOLD / .000030 NICKEL	1 *	204329-7
205171-6	1.450	.685	TIN NICKEL PLATED	3	
205171-5	1.236	.471	TIN NICKEL PLATED	2	
205171-4	1.022	.257	TIN NICKEL PLATED	1 *	
205171-3	1.450	.655	TIN NICKEL PLATED	3	204329-3
205171-2	1.236	.471	TIN NICKEL PLATED	2	204329-2
205171-1	1.022	.257	TIN NICKEL PLATED	1	204329-1

- 1. KIT PART NO. 1-204329-0 CONTACTS PER BAG.
- 2. GOLD PLATING PER MIL-G-45204, NICKEL PLATING PER QQ-N-292, LINE PLATING PER MIL-T-10727.
- 3. AT LEAST TWO SHARP CORNERS WHOSE RADIUS SHALL NOT EXCEED .003.
- 4. GOLD FLASH OVER .000030 MIN. NICKEL ON ENTIRE CONTACT, WITH .000030 MIN. GOLD ON ELECTRICAL ENGAGEMENT AREA ONLY.
- 5. OBSOLETE PART NO.

CAUTION: USE OF TIN PLATED TERMINALS IN CERTAIN ENVIRONMENTS MAY CAUSE NON-CONFORMANCE TO AMP PRODUCT SPECIFICATION 108-100/5.

UNLESS OTHERWISE SPECIFIED DIMENSIONS ARE IN INCHES TOLERANCES ON DECIMALS ARE ±.005 ANGLES ARE AS SHOWN MATERIAL SEE CALLOUT

CONTRACT NO. DR. *10-14-70*

NAME: AMP HARRISBURG, PENNSYLVANIA
 PIN CONTACT, TYPE XI, #20, WRAP TYPE, LOOSE PIECE, .025 X .025, KIT

OTHER APPD: [Signature]
 DSIGN: [Signature]
 SCALE: 10:1
 SHEET: 1 OF 1