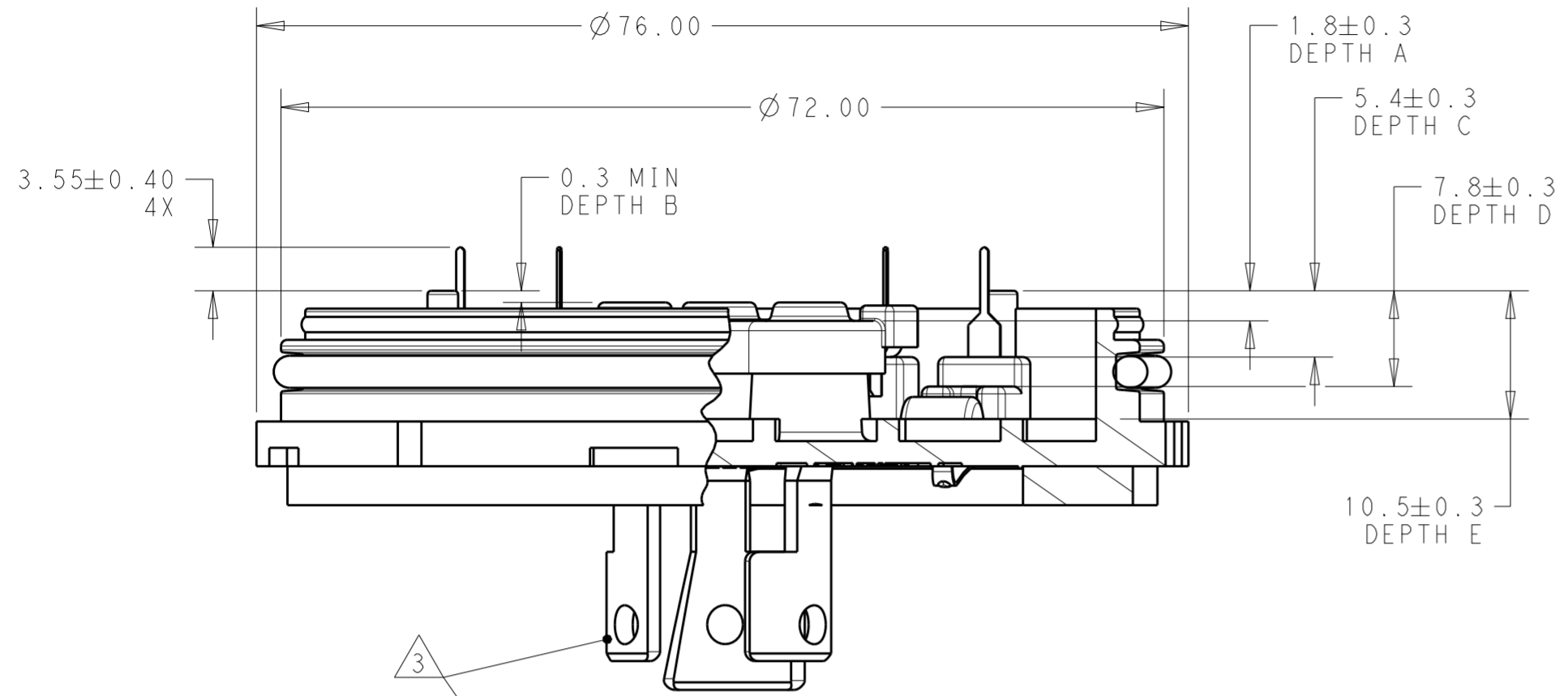


THIS DRAWING IS UNPUBLISHED. RELEASED FOR PUBLICATION 20  
 © COPYRIGHT 20 BY - ALL RIGHTS RESERVED.

| REVISIONS |     |                           |           |       |
|-----------|-----|---------------------------|-----------|-------|
| P         | LTR | DESCRIPTION               | DATE      | APVD  |
| A         |     | RELEASE PER ECR-19-000700 | 16JAN2019 | JS DD |
|           |     |                           |           |       |
|           |     |                           |           |       |



1 MATERIALS:  
 HOUSING AND CAP: PBT  
 DIMMING CONTACTS: COPPER ALLOY  
 LINE VOLTAGE CONTACTS: COPPER ALLOY  
 SHORTING CLIP: COPPER ALLOY  
 GASKET: NBR/PVC BLEND  
 O-RING: SILICONE RUBBER  
 MEMBRANE VENT: PTFE

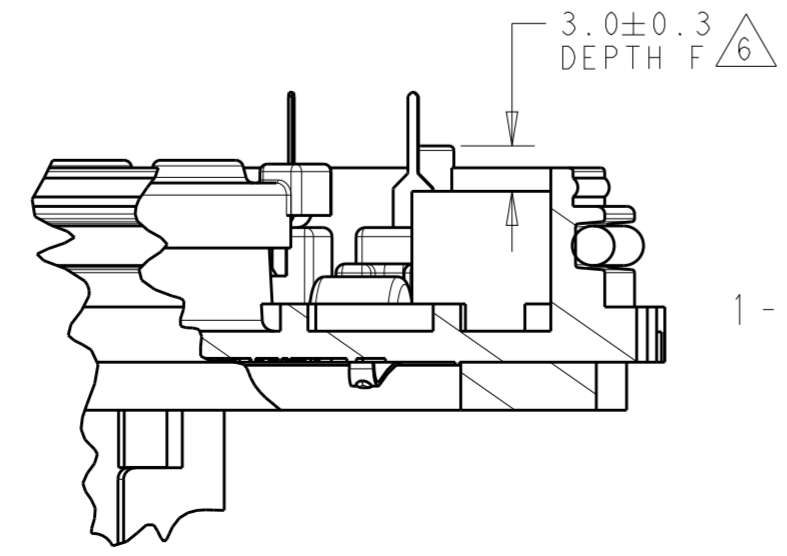
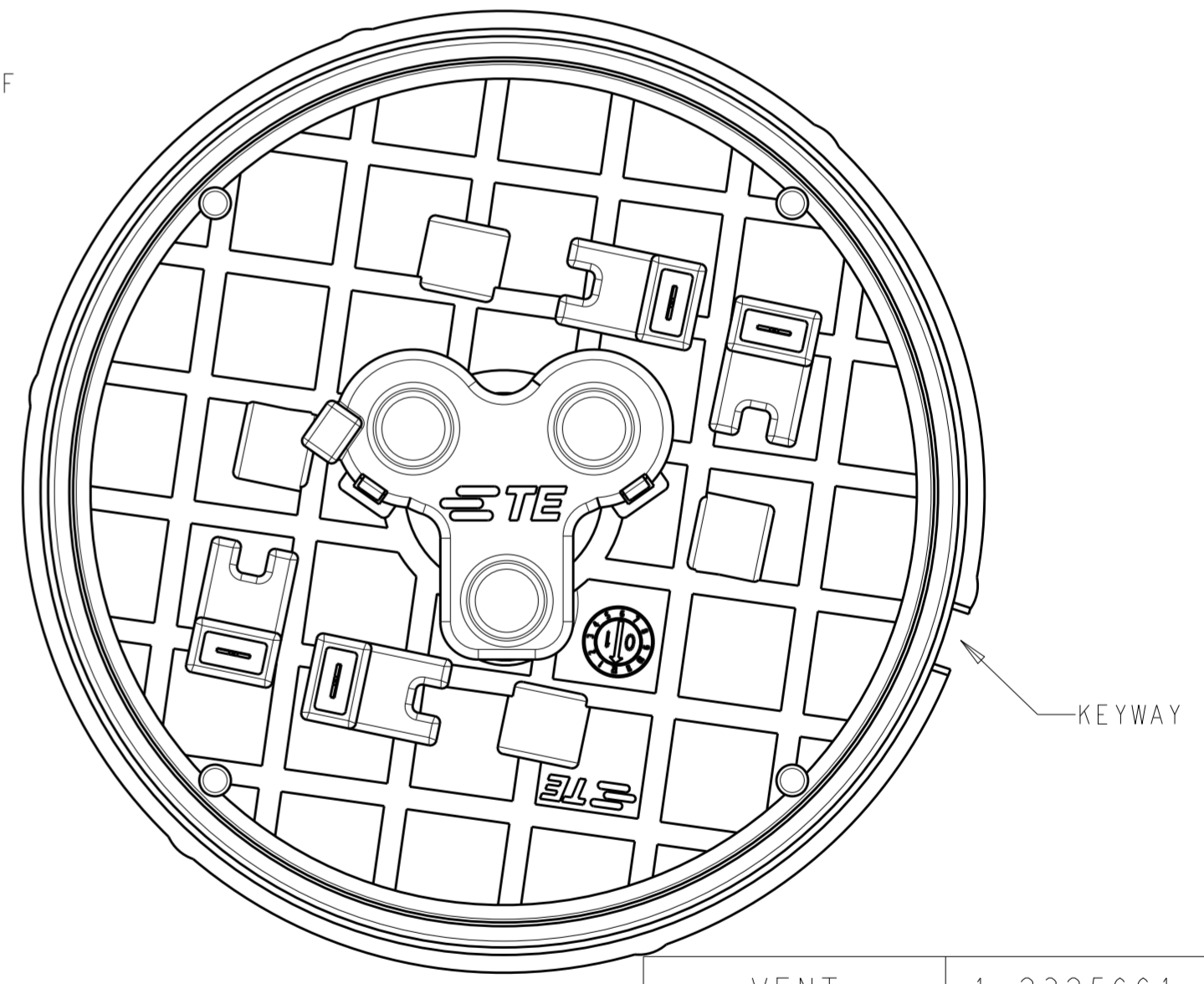
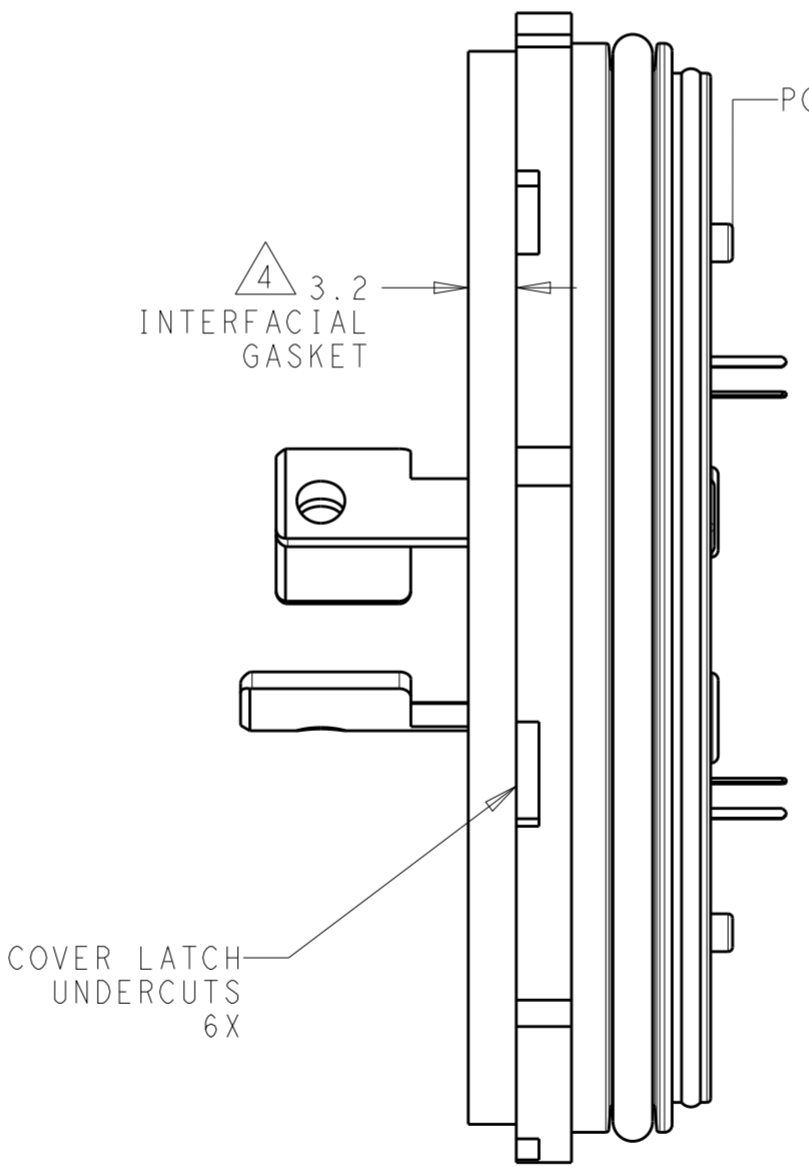
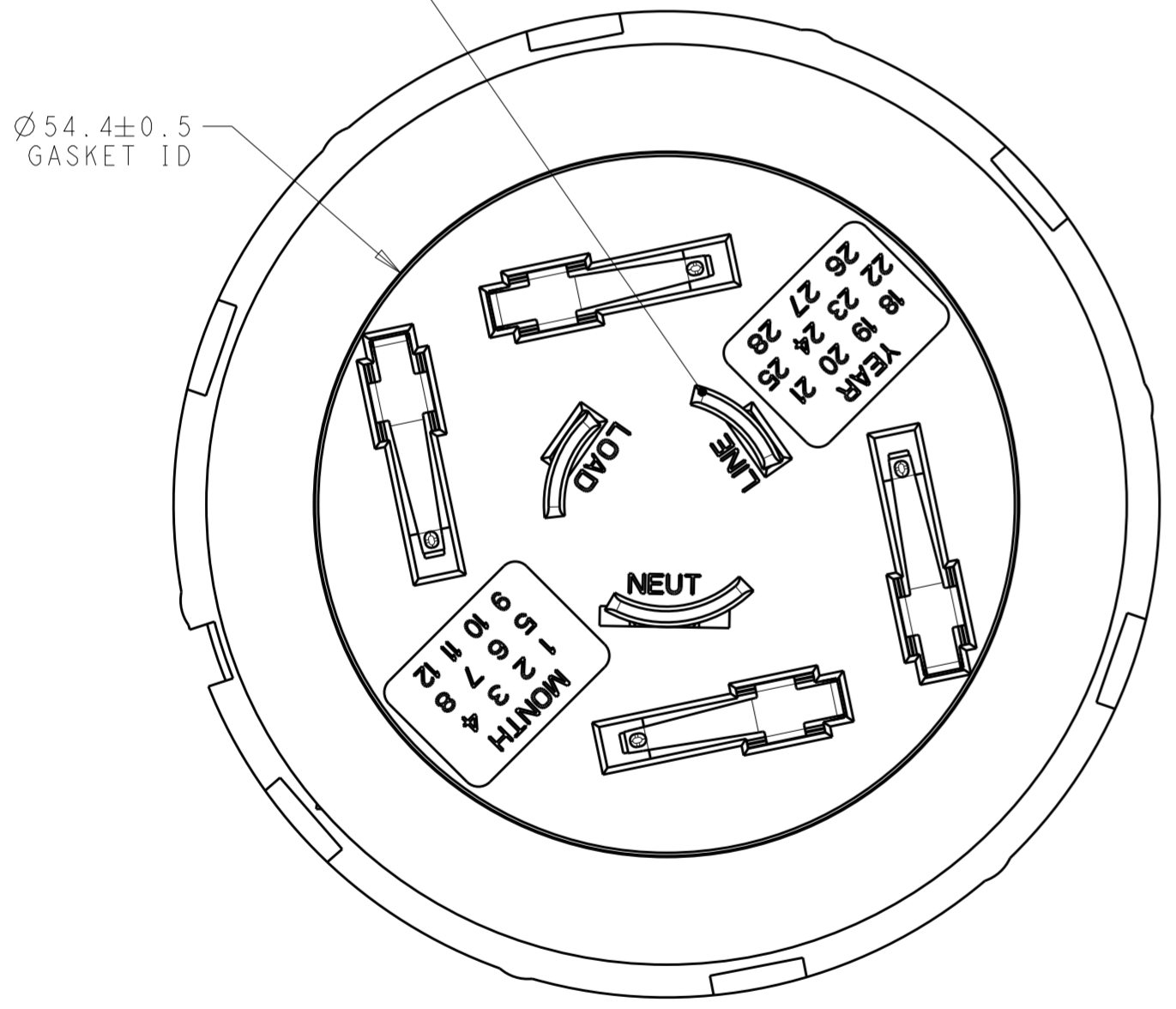
2 FINISH:  
 DIMMING CONTACTS: NICKEL UNDERPLATE ENTIRE  
 CONTACT 0.127 µm MIN THICK. SELECTIVE GOLD PLATE CONTACT  
 MATING AREA (MATING FACE SIDE ONLY) 0.76 µm MIN THICK.  
 MATTE TIN PLATE TAB ON BOTH SIDES 0.30 µm MIN THICK.  
 LINE VOLTAGE CONTACTS: MATTE TIN PLATE

3 MATING INTERFACE PER ANSI C136.41-2013.

4 ADHESIVE BACKED GASKET SUPPLIED BUT NOT INSTALLED

5. THIS PRODUCT HAS NOT COMPLETED VALIDATION TESTING.

6 VENT FEATURES ONLY ON 1-2325661-1



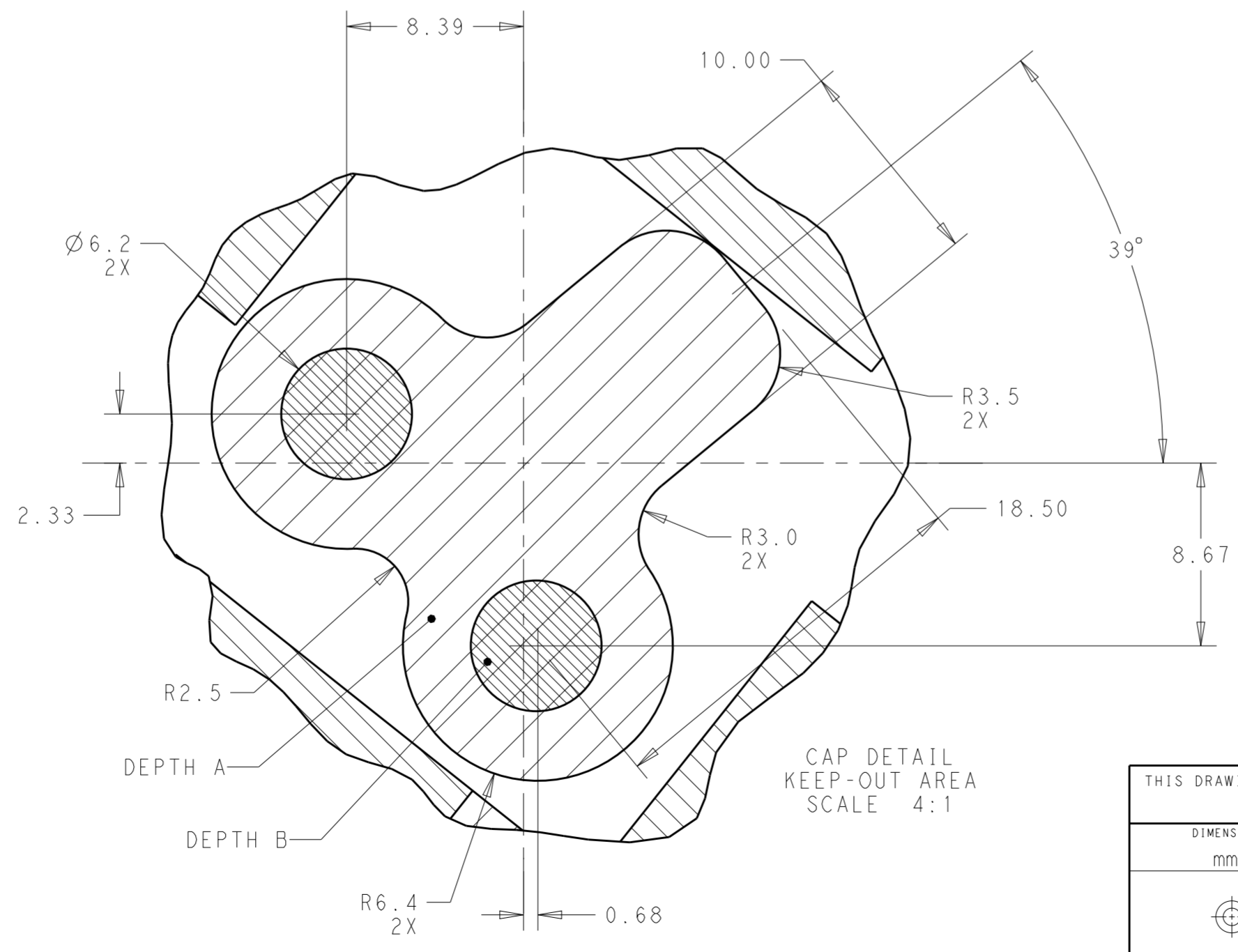
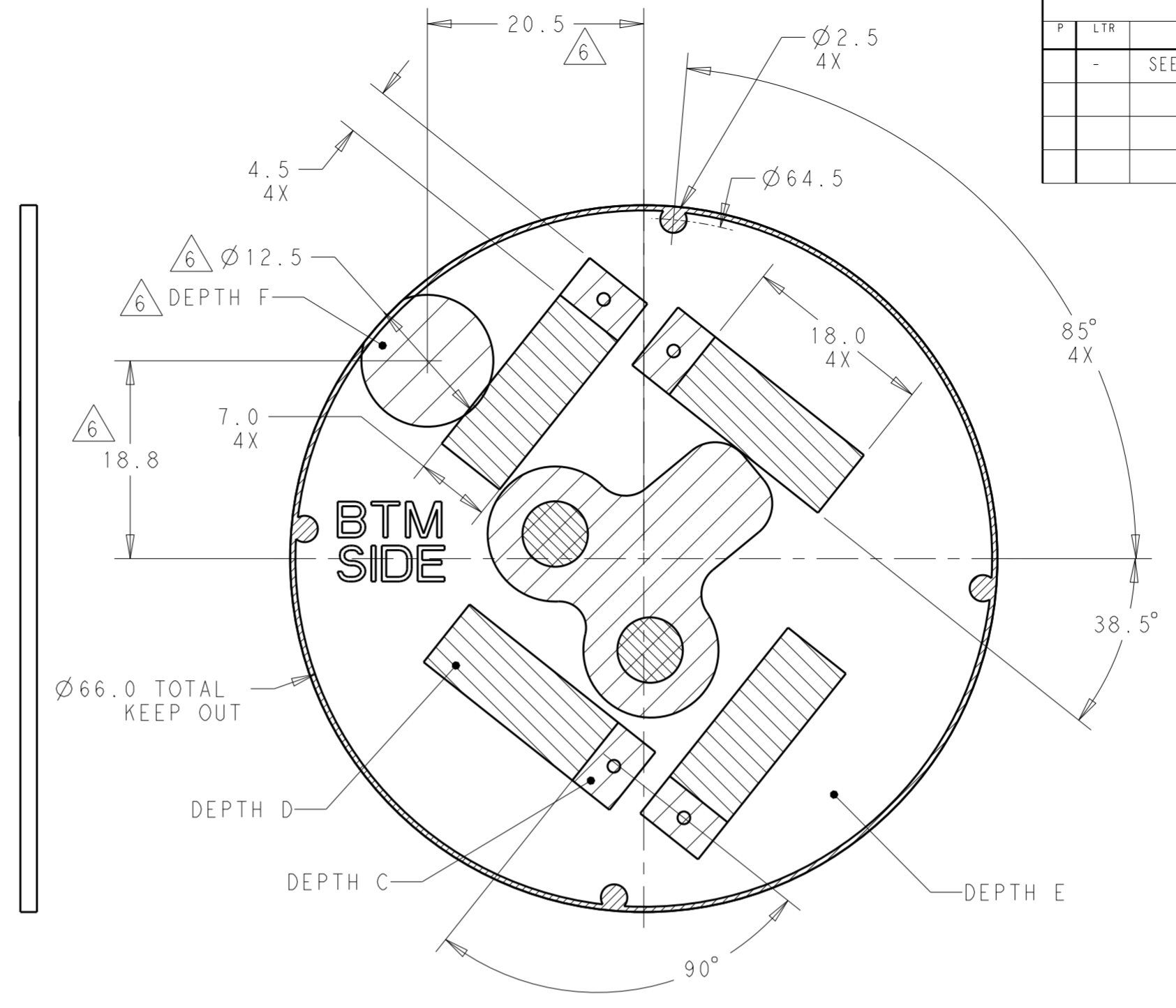
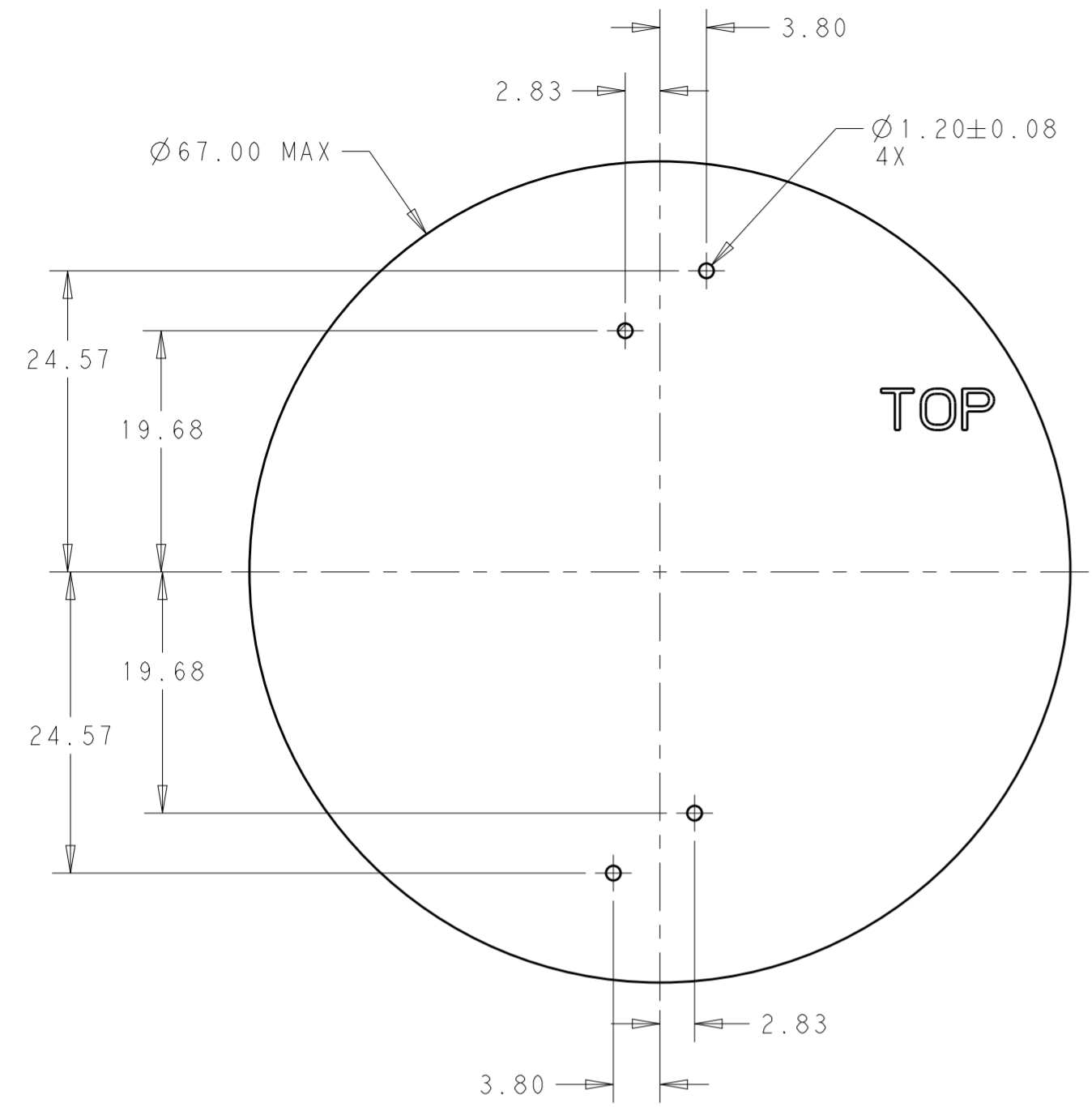
1-2325661-1 SHOWN

|         |             |
|---------|-------------|
| VENT    | 1-2325661-1 |
| NO VENT | 2325661-1   |
| NOTES   | PART NO.    |

|  |            |                            |   |                      |
|--|------------|----------------------------|---|----------------------|
| THIS DRAWING IS A CONTROLLED DOCUMENT. |            | DWN C DAILY 03OCT2017      | TE Connectivity                                   |                      |
|  |            | CHK MOSTOLLER 03OCT2017    |   |                      |
| DIMENSIONS: mm                         |            | APVD -                     | NAME SHORTING BASE ASSEMBLY, LUMAWISE ENDURANCE N |                      |
| TOLERANCES UNLESS OTHERWISE SPECIFIED: |            | PRODUCT SPEC 108-32125     | SIZE A2   |                      |
| 0 PLC ±                                | 1 PLC ±0.2 | APPLICATION SPEC 114-32159 | CAGE CODE -                                       | DRAWING NO C-2325661 |
| 2 PLC ±0.25                            | 3 PLC ±    | WEIGHT -                   | RESTRICTED TO -                                   | SCALE 1:1            |
| 4 PLC ±                                | ANGLES ±   | CUSTOMER DRAWING           | SHEET 1 OF 2                                      | REV A                |
| FINISH                                 |            |                            |   |                      |

THIS DRAWING IS UNPUBLISHED. RELEASED FOR PUBLICATION 20  
 © COPYRIGHT 20 BY - ALL RIGHTS RESERVED.

| REVISIONS |     |             |      |      |
|-----------|-----|-------------|------|------|
| P         | LTR | DESCRIPTION | DATE | APVD |
| -         | -   | SEE SHEET 1 | -    | -    |
|           |     |             |      |      |
|           |     |             |      |      |



RECOMMENDED PCB

|  |  |                               |   |                         |
|--|--|-------------------------------|---|-------------------------|
| THIS DRAWING IS A CONTROLLED DOCUMENT. |  | DWN<br>C. DAILY 03OCT2017     | TE Connectivity   |                         |
|  |  | CHK<br>M. STOLLER 03OCT2017   |   |                         |
| DIMENSIONS: mm                         |  | APVD<br>-                     | NAME<br>SHORTING BASE ASSEMBLY,<br>LUMAWISE ENDURANCE N |                         |
| TOLERANCES UNLESS OTHERWISE SPECIFIED: |  | PRODUCT SPEC<br>108-32125     | SIZE<br>A2  |                         |
| 0 PLC ±                                |  | APPLICATION SPEC<br>114-32159 | CAGE CODE<br>-  | DRAWING NO<br>C-2325661 |
| 1 PLC ±0.2                             |  | WEIGHT<br>-                   | RESTRICTED TO<br>-                                      | REV<br>A                |
| 2 PLC ±0.25                            |  | SCALE 1:1 SHEET 2 OF 2        |   |                         |
| 3 PLC ±                                |  | CUSTOMER DRAWING              |   |                         |
| 4 PLC ±                                |  |                               |   |                         |
| ANGLES ±                               |  |                               |   |                         |
| FINISH ±                               |  |                               |   |                         |