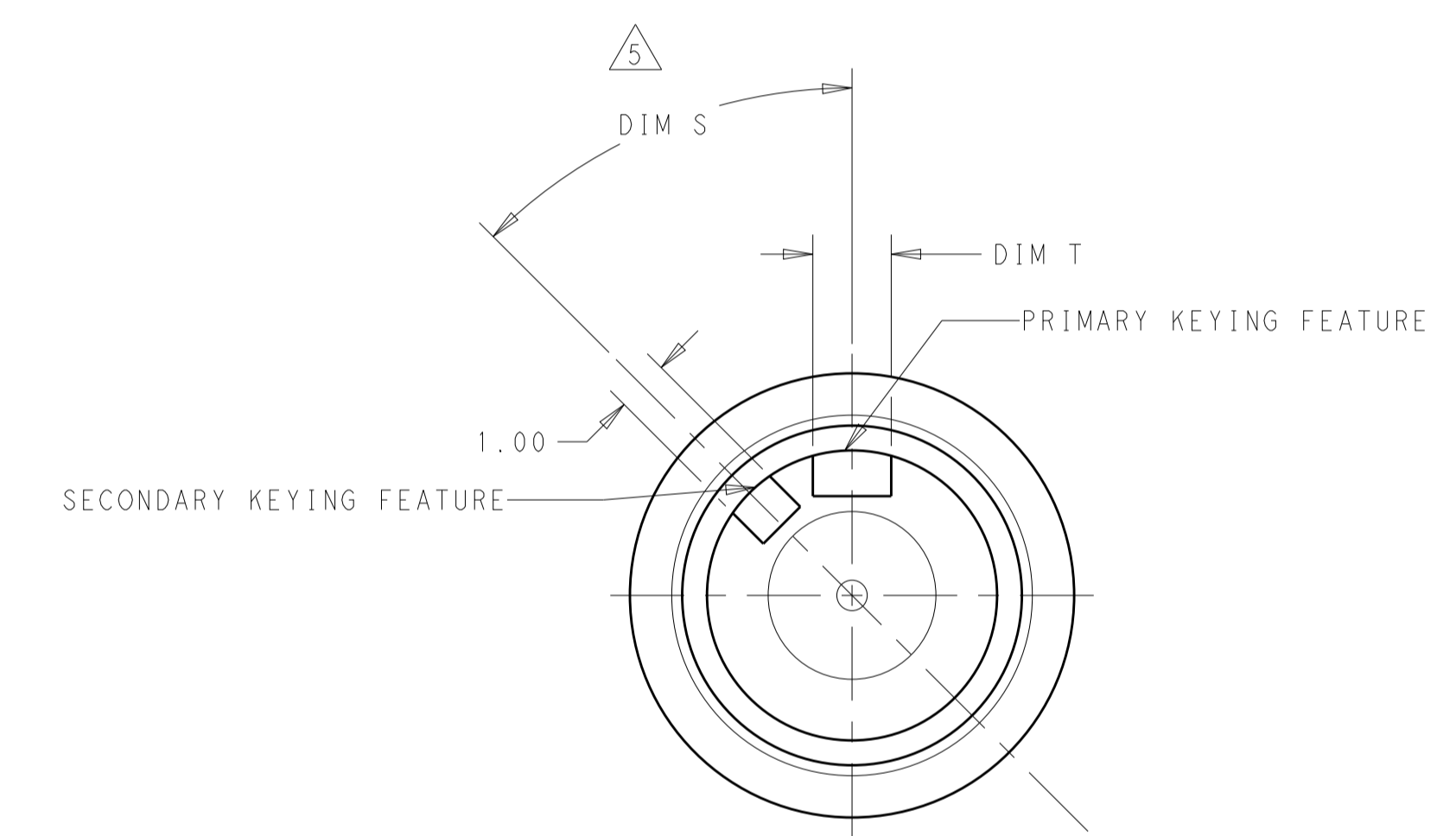
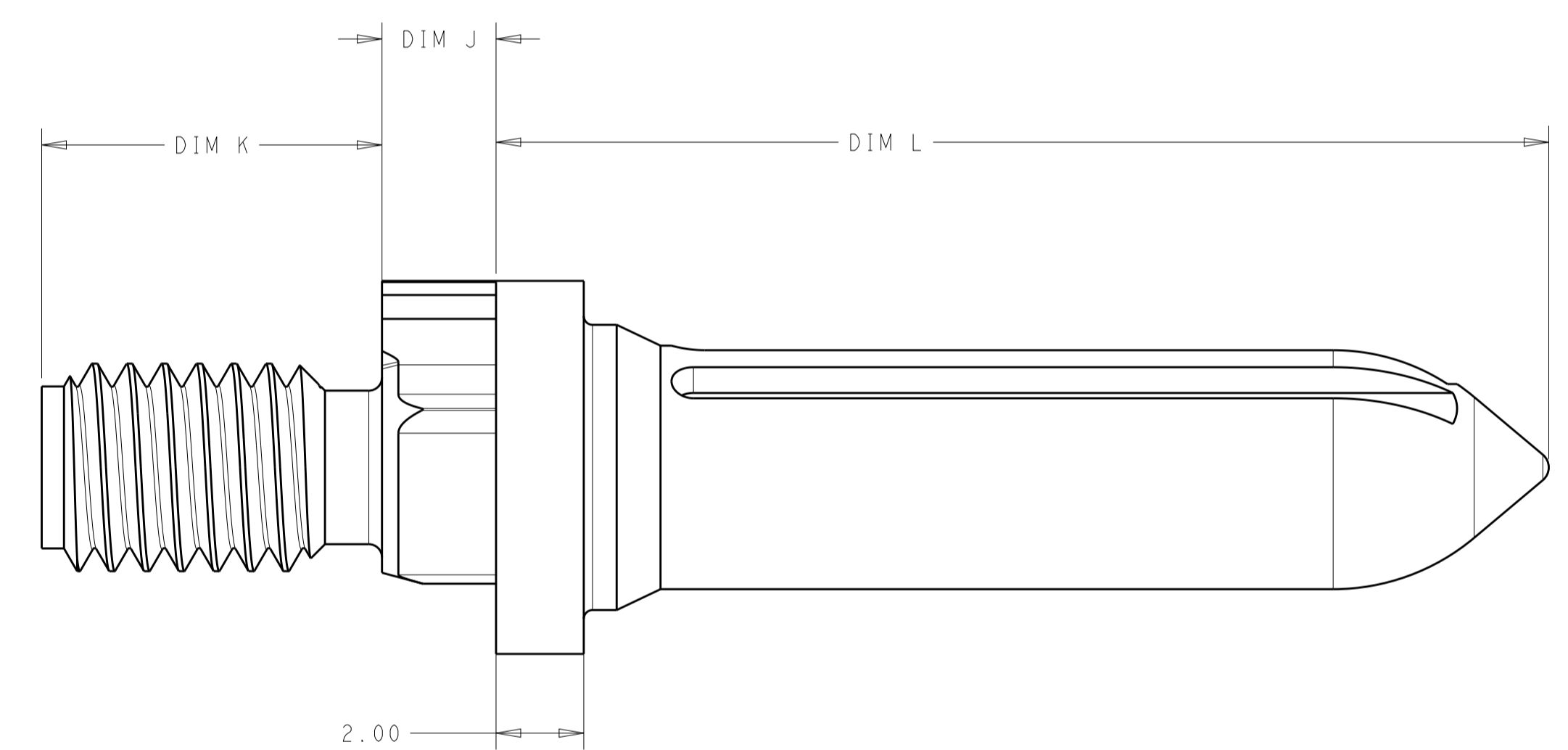
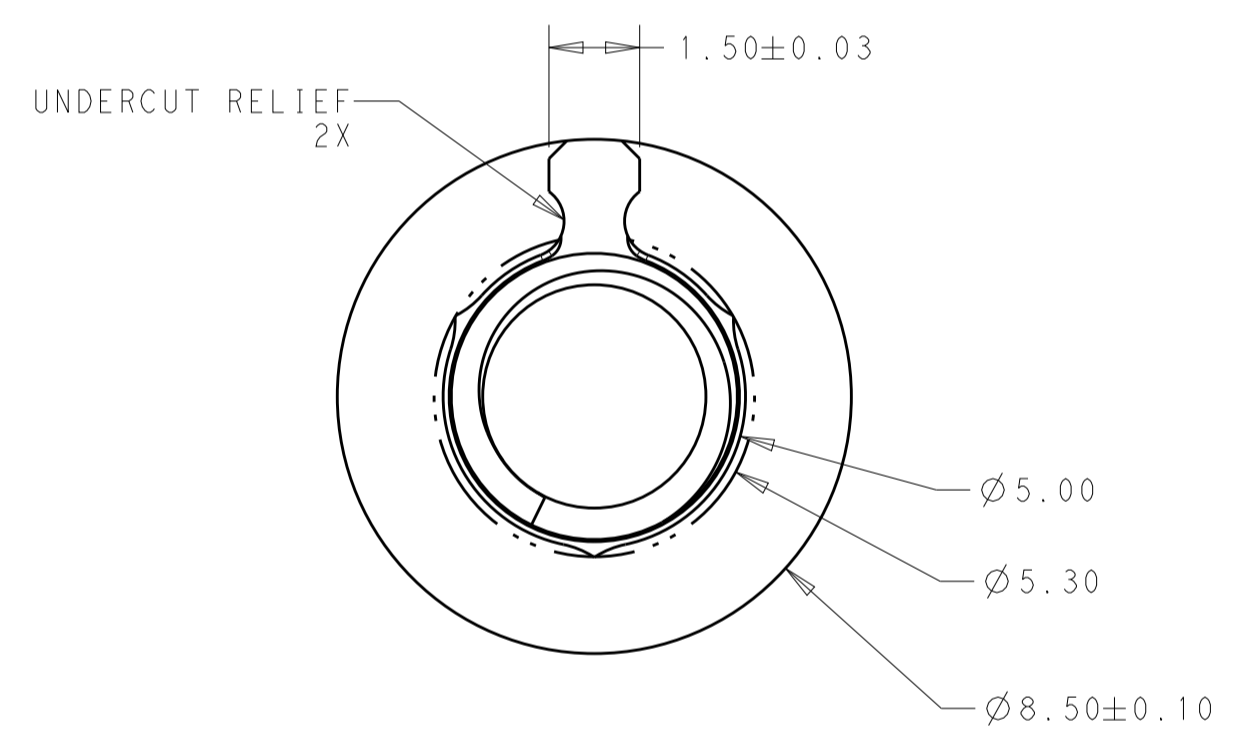
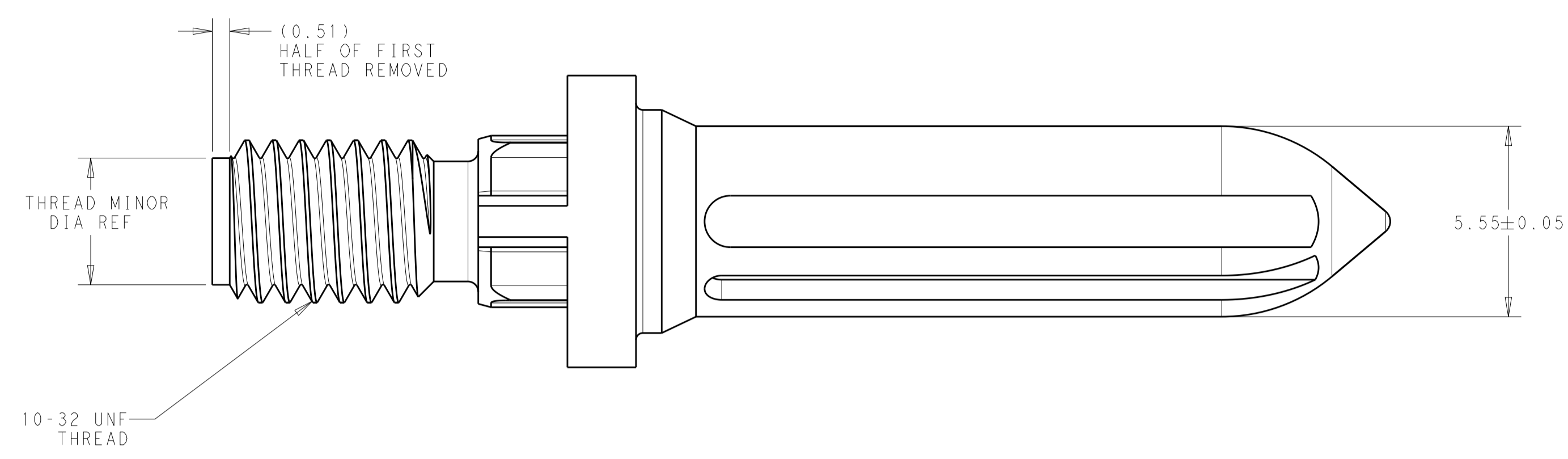
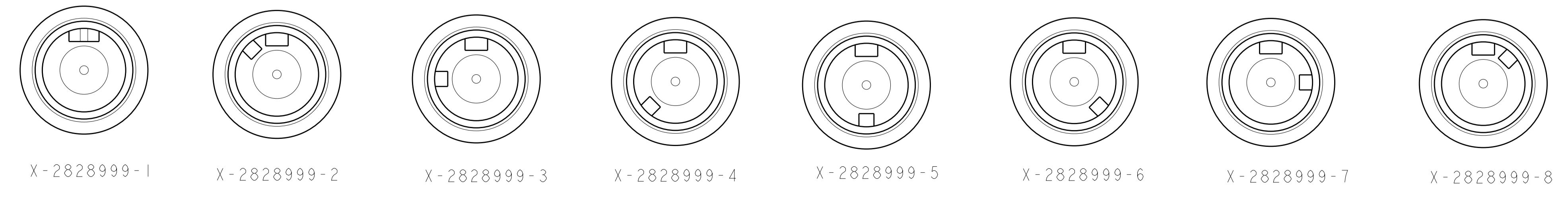


REVISIONS					
P.	LTN.	DESCRIPTION	DATE	DWN.	APVD.
B		REV PER ECO 19-010704	7-15-19	CT	JS

- 1 MATERIAL: STAINLESS STEEL (303)
- 2 FINISH: PASSIVATED
- 3 ANNULAR RING PLATED AROUND GUIDE PIN MOUNTING HOLE ON TOP AND BOTTOM SIDE OF BOARD
- 4 NO SECONDARY KEYING FEATURE
- 5 DENOTES RELATIONSHIP BETWEEN PRIMARY AND SECONDARY KEYING FEATURES.
- 6 PIN CAN BE ROTATED IN INCREMENTS OF 45° CREATING 8 POSSIBLE KEYING VARIATIONS FOR EACH PART NUMBER



2828454-2	24	7.25	5.7	1.50	315°	1-2828999-8
2828454-3	24	7.25	5.7	1.50	270°	1-2828999-7
2828454-4	24	7.25	5.7	1.50	225°	1-2828999-6
2828454-5	24	7.25	5.7	1.50	180°	1-2828999-5
2828454-4	24	7.25	5.7	1.50	135°	1-2828999-4
2828454-3	24	7.25	5.7	1.50	90°	1-2828999-3
2828454-2	24	7.25	5.7	1.50	45°	1-2828999-2
2828454-1	24	7.25	5.7	2.00	4	1-2828999-1
2828454-2	24	7.25	2.6	1.50	315°	2828999-8
2828454-3	24	7.25	2.6	1.50	270°	2828999-7
2828454-4	24	7.25	2.6	1.50	225°	2828999-6
2828454-5	24	7.25	2.6	1.50	180°	2828999-5
2828454-4	24	7.25	2.6	1.50	135°	2828999-4
2828454-3	24	7.25	2.6	1.50	90°	2828999-3
2828454-2	24	7.25	2.6	1.50	45°	2828999-2
2828454-1	24	7.25	2.6	2.00	4	2828999-1
MATES WITH	DIM L	DIM K	DIM J	DIM T	DIM S	PART NUMBER



THIS DRAWING IS A CONTROLLED DOCUMENT. DWN: A. TSANG 04APR2016
 CHK: K. MILLER 06APR2016

STE TE Connectivity

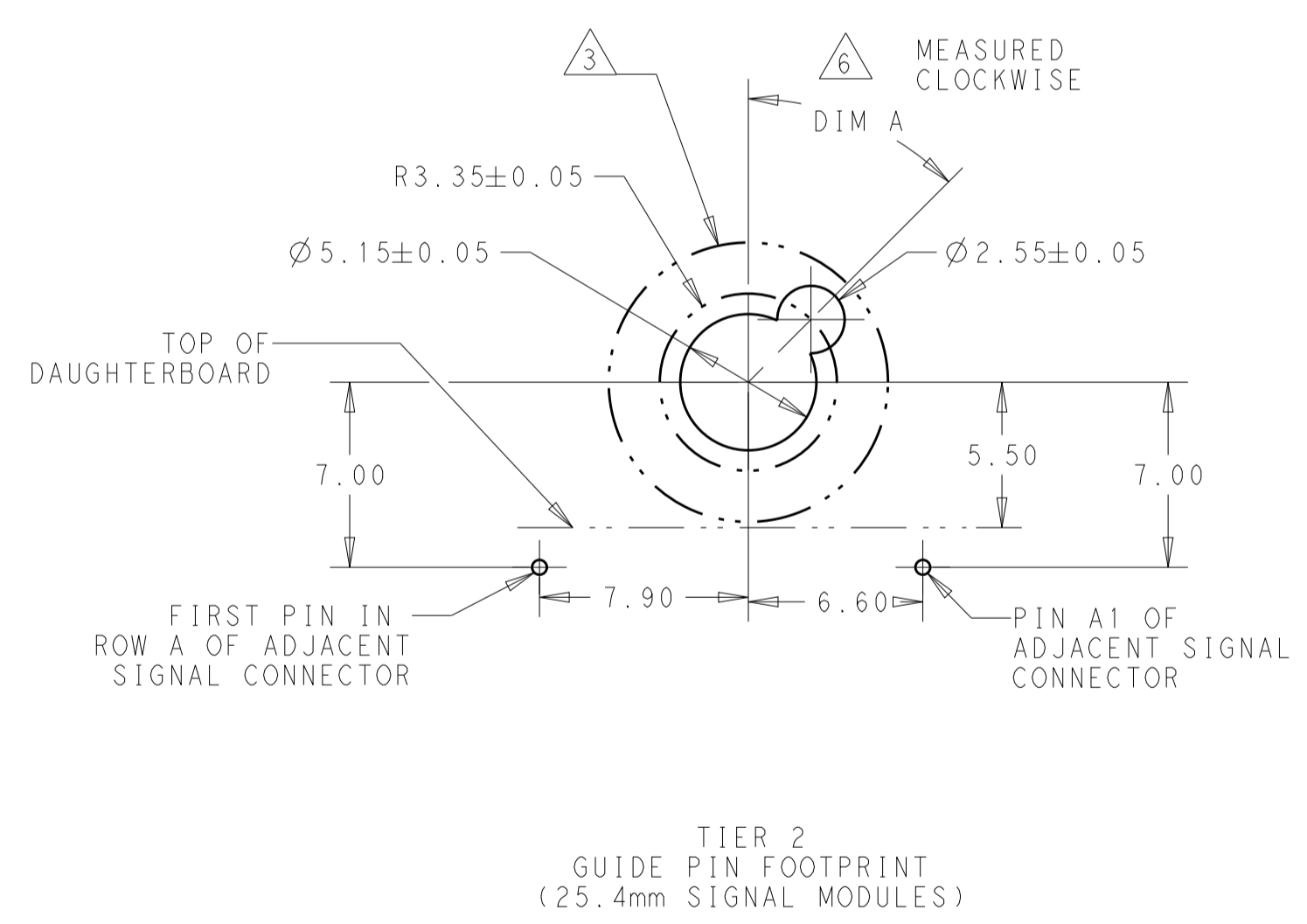
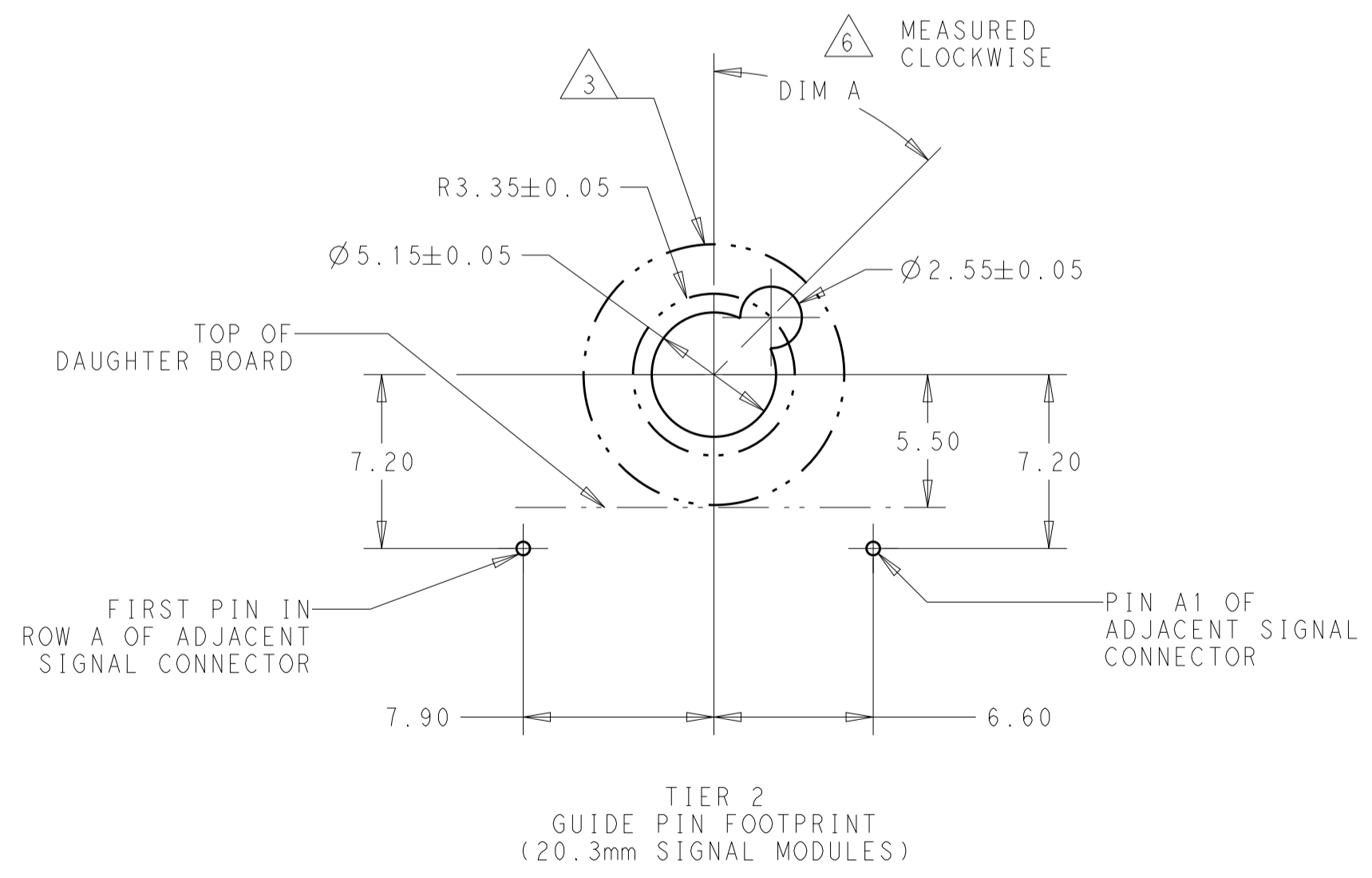
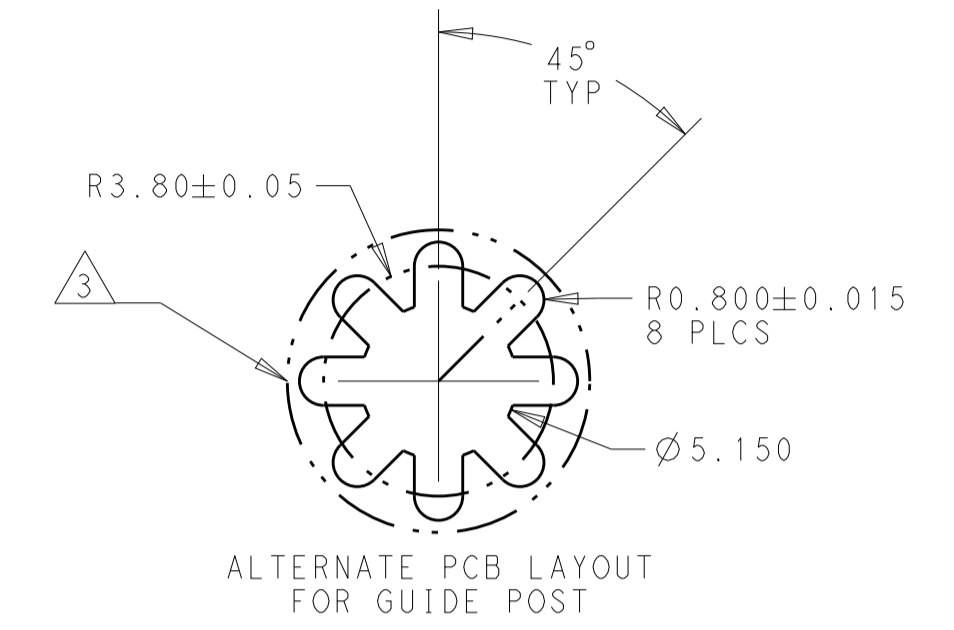
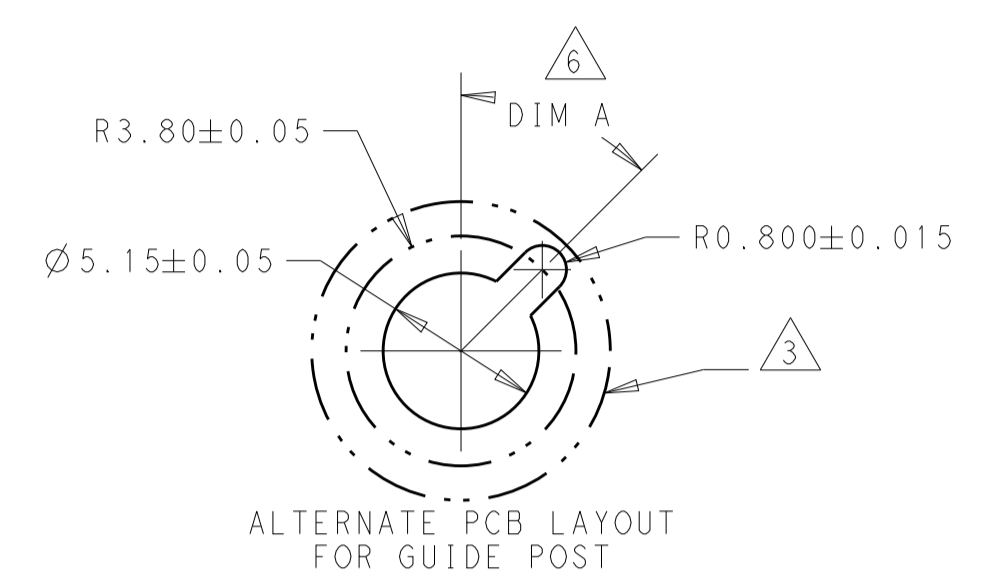
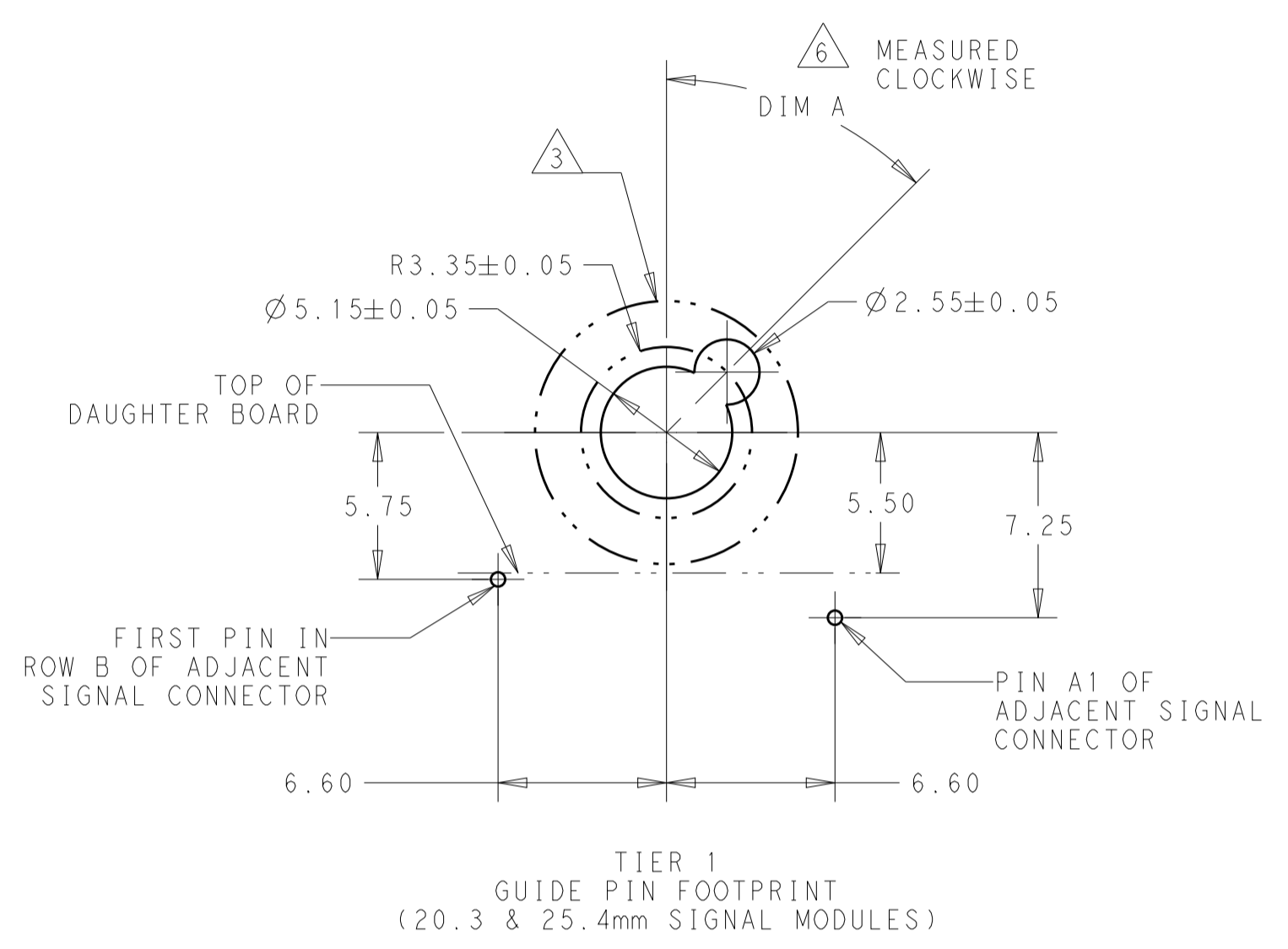
NAME: GUIDE PIN, CLOCKABLE KEYED, 64 POSN, CUSTOM APERTURE STD FOOTPRINT, BP, MULTIGIG

SIZE: A1 CAGE CODE: - DRAWING NO: C=2828999

WEIGHT: 5.80g

CUSTOMER DRAWING SCALE: 8:1 SHEET 1 OF 2 REV B

REVISIONS				
P.	LTN	DESCRIPTION	DATE	APVD
-	-	SEE SHEET 1	-	-



THIS PRINT IS
PRELIMINARY
 UNQUALIFIED PRODUCT
 CONTACT PRODUCT ENGINEERING
 BEFORE USING THIS PRINT

THIS DRAWING IS A CONTROLLED DOCUMENT.		DWN A. TSANG 04APR2016	NAME	
DIMENSIONS:		CHK K. MILLER 06APR2016	GUIDE PIN, CLOCKABLE KEYED, 64 POSN, CUSTOM APERTURE STD FOOTPRINT, BP, MULTIGIG	
mm	TOLERANCES UNLESS OTHERWISE SPECIFIED:	APVD	PRODUCT SPEC	RESTRICTED TO
Ø	0 PLC ±0.2	APVD	APPLICATION SPEC	SIZE CAGE CODE DRAWING NO
□	1 PLC ±0.08	APVD	APVD	SCALE 8:1 SHEET 2 OF 2 REV B
□	2 PLC ±0.001	APVD	APVD	WEIGHT 5.80g
□	3 PLC ±0.0001	APVD	APVD	CUSTOMER DRAWING
□	4 PLC ±0.0001	APVD	APVD	SCALE 8:1 SHEET 2 OF 2 REV B
□	ANGLES ±1°	APVD	APVD	SCALE 8:1 SHEET 2 OF 2 REV B
MATERIAL	FINISH	APVD	APVD	SCALE 8:1 SHEET 2 OF 2 REV B