

4

3

2

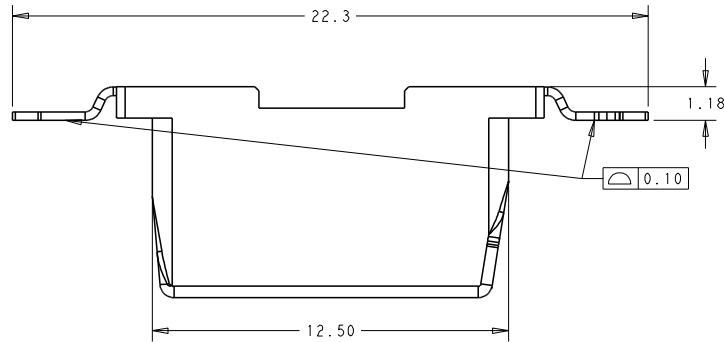
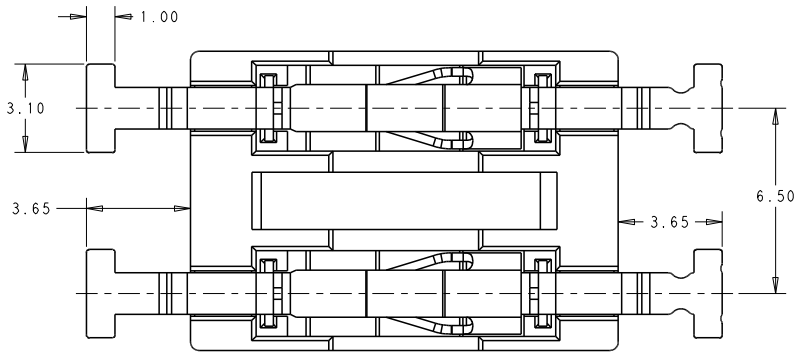
1

THIS DRAWING IS UNPUBLISHED. RELEASED FOR PUBLICATION 20
© COPYRIGHT 20 BY - ALL RIGHTS RESERVED.

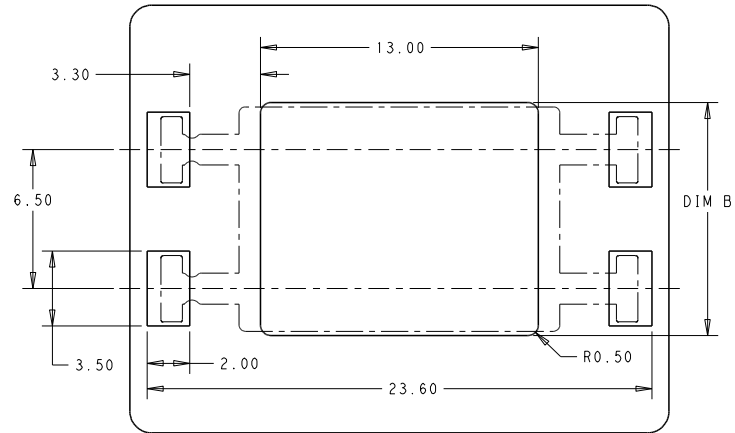
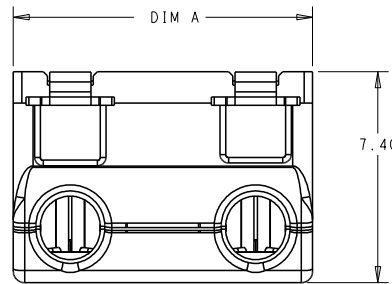
REVISIONS				
P	LYR	DESCRIPTION	DATE	DWN APVD
A		FIRST VERSION	13NOV2018	G.F S.M
A1		ADD OPERATING TEMPERATURE	20NOV2019	G.F S.M

NOTES :

- MATERIALS AND FINISH:
- HOUSING: HIGH THERMAL PLASTIC, COLOR: WHITE
- CONTACTS: COPPER ALLOY, FINISH: PRE-TIN OVER NICKEL UNDERPLATE
- MUST COMPLY WITH DIRECTIVE 2002/95/EC (ROHS)
- OPERATING TEMPERATURE: -55°C-105°C
- WIRE TYPES AND SIZES ACCEPTED
SOLID WIRE: 18AWG, 20AWG, 22AWG, 24AWG
STRAND WIRE: 18AWG (STRANDS: 16); 20AWG (STRANDS: 7); 22AWG (STRANDS: 7)
24AWG (UL1061/STRANDS: 7)
MAX INSULATION OD: 2.1mm MAX.
STRIP LENGTH: 8.0±0.5mm
- PACKAGED IN TAPE AND REEL

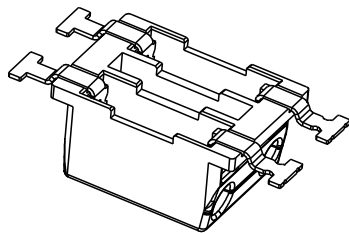


SCALE 8:1

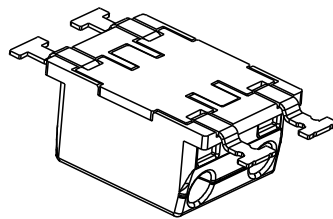


SCALE 6:1

10.9	10.5	2	1-2834331-2
10.9	10.5	2	2834331-2
4.4	4.0	1	1-2834331-1
4.4	4.0	1	2834331-1
DIM B	DIM A	POLES No	PART NO



W/O CAP TYPE
P/N: 2834331-1/2



WITH CAP TYPE
P/N: 1-2834331-1/2

DIMENSIONS:		TOLERANCES UNLESS OTHERWISE SPECIFIED:		DWN: GEORGE FU 13NOV2018		TE Connectivity		
(mm)		0 PLC	±	CHK: GEORGE FU 13NOV2018	NAME	6.5mm PITCH ITB RELEASABLE		
		1 PLC	±0.20	APVD: GEORGE FU 13NOV2018	PRODUCT SPEC	POKE-IN CONN.		
		2 PLC	±0.13	SHI MING	SIZE		RESTRICTED TO	
		3 PLC	±	PRODUCT SPEC	108-137311			
		4 PLC	±	APPLICATION SPEC	114-137311			
		ANGLES	±	WEIGHT	-			
		FINISH	±	CUSTOMER DRAWING				
NOTE 1				NOTE 1				
-				-				
SCALE 4:1						SHEET 1 OF 1		
REV A1								