

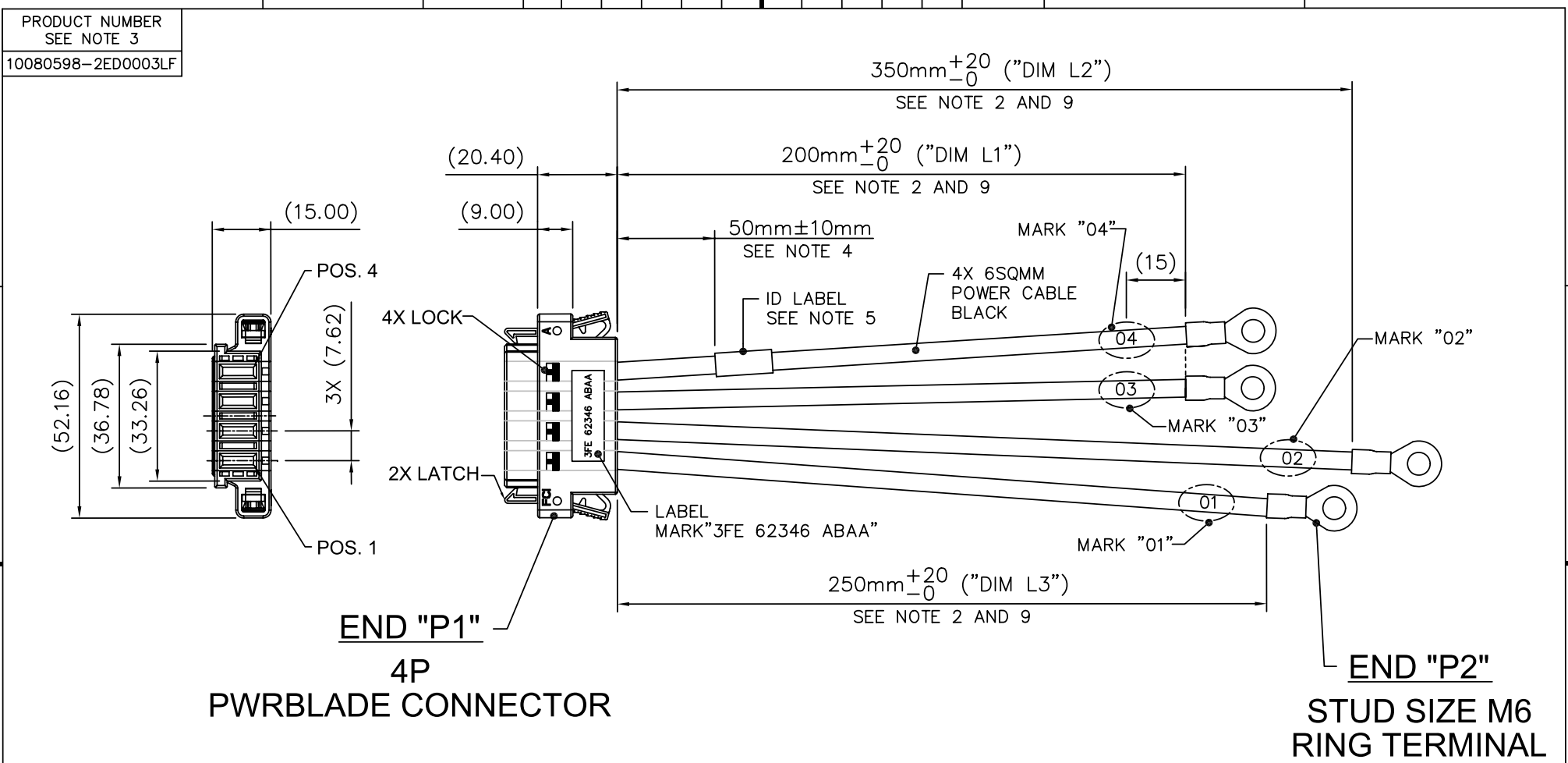
FCI CONFIDENTIAL

This document is the property of and embodies CONFIDENTIAL and PROPRIETARY information of FCI. No part of the information shown on this document may be used in any way or disclosed to others without the written consent of FCI.



FCIconnect.com

Copyright FCI



**4P
PWRBLADE CONNECTOR**

**END "P2"
STUD SIZE M6
RING TERMINAL**

WIRE LIST (SEE NOTE 6)					
POSITION	TERM	WIRE SIZE	WIRE COLOR	TERM	POSITION
POS. 1	STR	6 mm ²	BLACK	R-Ter.	Mark"01"
POS. 2	STR	6 mm ²	BLACK	R-Ter.	Mark"02"
POS. 3	STR	6 mm ²	BLACK	R-Ter.	Mark"03"
POS. 4	STR	6 mm ²	BLACK	R-Ter.	Mark"04"

mat'l. code		surface		tolerance		projection		product family	
SEE NOTE 13		ISO 1302 ✓		ISO 406 ISO 1101				Cable Assembly	
itr	ecn no.	dr	date	tolerances unless otherwise specified					
A	N09-0042	delhly	02/12/09	ANGULAR	LINEAR			title	
B	N09-0126	delhly	04/27/09			MM		PwrBlade STR 4P to R-Ter. C&A	
						scale 4		dwg no. sheet 1 of 2 size	
								10080598-2ED0003LF A3	
								Type CUSTOMER Drawing	
sheet index		revision	B B						
		sheet	1 2						

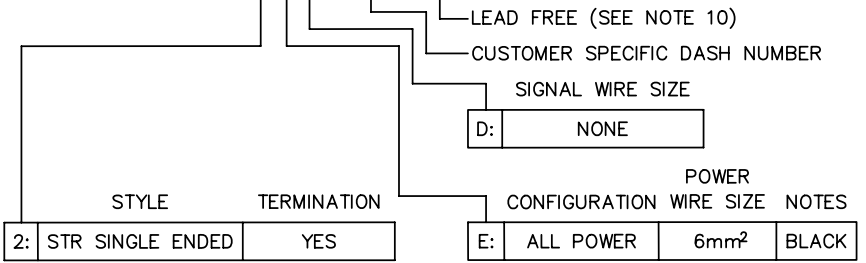
FCI CONFIDENTIAL

This document is the property of and embodies CONFIDENTIAL and PROPRIETARY information of FCI. No part of the information shown on this document may be used in any way or disclosed to others without the written consent of FCI. Copyright FCI

PRODUCT NUMBER
SEE NOTE 3
10080598-2ED0003LF

NOTES:

- ① END "P1" MATES WITH FCI HEADER PART NUMBER: 51963-030LF
END "P2" MATES WITH FCI HEADER PART NUMBER: N/A
- ② UNLESS OTHERWISE SPECIFIED ASSEMBLIES LENGTH TOLERANCE=
< = 1 METER: ±15.0mm
> 1 METER TO 10 METER: ±2% OF "DIM L"
> 10 METER: +0.00% / -4% OF "DIM L"
- ③ PART NUMBER DESCRIPTION:
BASE NUMBER DASH NUMBER
1 0 0 8 0 5 9 8 - 2 E D 0 0 0 3 L F



- ④ UNLESS OTHERWISE SPECIFIED LABEL POSITION SHALL BE APPROXIMATELY 50mm FROM REAR OF CONNECTOR
- ⑤ UNLESS OTHERWISE SPECIFIED STANDARD LABEL DETAILS SHALL BE:
 - MANUFACTURE CODE OR NAME
 - FCI P/N
 - REVISION
 - DATE CODE WW/YY FORMAT
 - COUNTRY ORIGIN

FONT SHALL BE CLEARLY VISABLE AND BLACK IN COLOR

- ⑥ ALL CABLE ASSEMBLIES SHALL BE TESTED 100% FOR CONTINUITY AS DEFINED IN WIRING LIST
- 7. UNLESS OTHERWISE SPECIFIED ALL CABLE ASSEMBLIES SHALL BE 100% HI-POT TESTED BY APPLYING 300V DC FOR MINIMUM FOR 10ms, UNLESS ACTIVE COMPONENTS ARE USED IN THIS ASSEMBLY
- 8. OTHER TESTING PERFORMED AS REQUIRED BY PRODUCT SPECIFICATION: GS-12-474
- ⑨ THIS DIMENSION IS A FINISHED PRODUCT LENGTH
- ⑩ LEAD FREE PRODUCTS MUST MEET EUROPEAN UNION DIRECTIVES AND OTHER COUNTRY REGULATIONS AS DESCRIBED IN GS-22-008

- ⑪ CONNECTOR ASSEMBLIES SHOWN ARE FOR REFERENCE ONLY AND MAY NOT SHOW ALL PART DETAIL. REFERENCE CONNECTOR ASSEMBLY DRAWING FOR COMPLETE DETAILS
- 12. PACKAGING SPECIFICATION AS PER: GS-14-1348 AND GS-14-1342
- ⑬ MATERIALS:
 - CABLE: UL RECOGNIZED, TEMPERATURE RATING 90°C, 600V MIN, BLACK HALOGEN FREE
 - HOUSING: HIGH TEMP, THERMOPLASTIC, UL 94V-0 GLASS FILLED, COLOR BALCK
 - SECONDARY LOCK: THERMOPLASTIC, UL 94V-0 GLASS FILLED, COLOR BLACK
 - POWER CONTACTS: COPPER ALLOY, GOLD PLATED IN CONTACT ZONE
- 14. A "Δ" SYMBOL WILL BE NEXT TO ANY DIMENSION, VIEW, OR NOTE WHICH HAS BEEN MODIFIED WITH THE CURRENT DRAWING REVISION.

mat'l. code		surface		tolerance		projection		product family	
SEE NOTE 13		ISO 1302 ✓		ISO 406 ISO 1101				Cable Assembly	
itr	ecn no.	dr	date	tolerances unless otherwise specified				title	
A	N09-0042	delhly ilu	02/12/09	ANGULAR	LINEAR	MM		PwrBlade STR 4P to R-Ter. C&A	
B	N09-0126	delhly ilu	04/27/09			scale 4			
		dr	delhly	Apr.27,09'			dwg no.		sheet 2 of 2
		enr	delhly	Apr.27,09'			10080598-2ED0003LF		A3
		chr	delhly	Apr.27,09'			Type		CUSTOMER Drawing
		appd	Jackson	Apr.27,09'					
sheet	revision	B	B						
index	sheet	1	2						