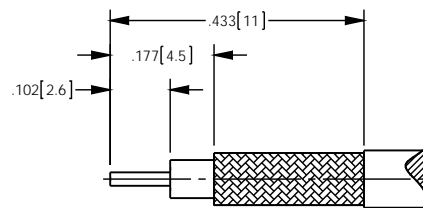
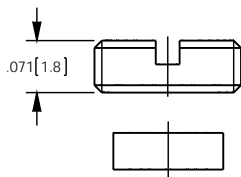


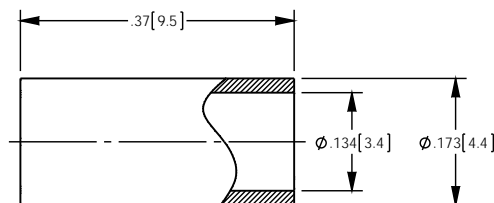
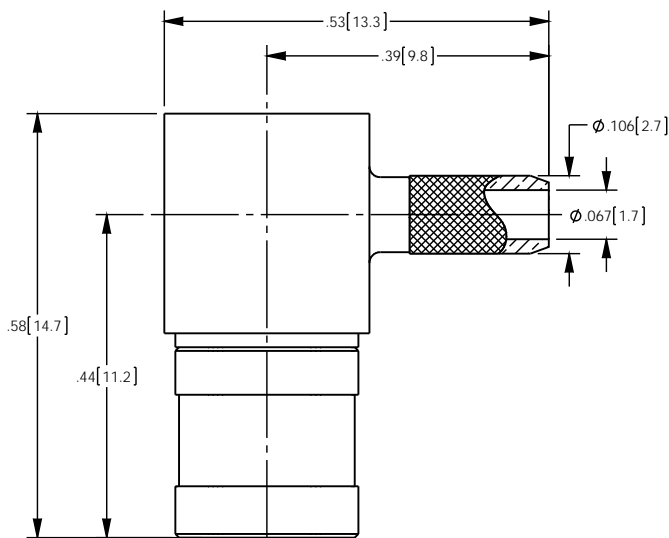
NOTES: UNLESS OTHERWISE SPECIFIED

1. FOR USE WITH RG-316 U/D OR EQUIVALENT.
2. MATERIAL SPECIFICATIONS:
INSULATORS: PTFE, COLOR - NATURAL
CONTACT AND RETAINING RING: BERYLLIUM COPPER
FERRULE: COPPER
ALL OTHER METAL PARTS: BRASS
3. FINISH SPECIFICATIONS:
CONTACT: .000003 MIN THICK GOLD OVER .000050 MIN THICK NICKEL
ALL OTHER METAL: THIN GOLD OVER .000050 MIN THICK COPPER
4. ELECTRICAL SPECIFICATIONS:
IMPEDANCE: 50 OHMS
5. INSULATOR, COVER, AND FERRULE SHIPPED LOOSE.
6. CRIMP FERRULE (.150 HEX) AND SOLDER TO CONTACT.

REV	DESCRIPTION	BY	APPD
		DATE	
A	ER052868	12/12/14	SM



RECOMMENDED CABLE STRIPPING DIMS



CATALOG P/N: 1013A204MS

<small>PER ASME Y14.5M-1994 UNLESS OTHERWISE SPECIFIED, DIMENSIONS ARE IN INCHES (MM) TOLERANCES: DECIMAL: .XX [XX] ± .01 [0.3] XXX [XXX] ± .005 [0.13] XXXX [XXXX] ± .XXXX ANGLES: ± 2° SCALE: 5:1</small>				 WINCHESTER Winchester Electronics Corporation <small>ELECTRONICS 199 Park Road Ext Suite 104 Middlebury, Connecticut 06762</small>	
CUSTOMER SALES DRAWING			<small>THIRD ANGLE</small> 	SMB R/A CRIMP PLUG FOR RG-316 U/D CABLE	
<small>DRAWN</small> JL	<small>DATE</small> 12/12/2014	<small>APPROVED</small> SM	<small>DATE</small> 12/19/2014	A	SD1013A204MS
<small>APPROVED</small> MS	<small>DATE</small> 12/12/14	<small>APPROVED</small> XXX	<small>DATE</small> XX/XX/XX	1	1
				<small>SHT</small>	<small>OF</small>
				1	1
				<small>REV</small>	A