

MIX8410 Electrochemical Oxygen Gas Sensor

Version No.:1.6

Features:

- * High selectivity
- * High accuracy
- * Linear output
- * Environmental protection design

Application:

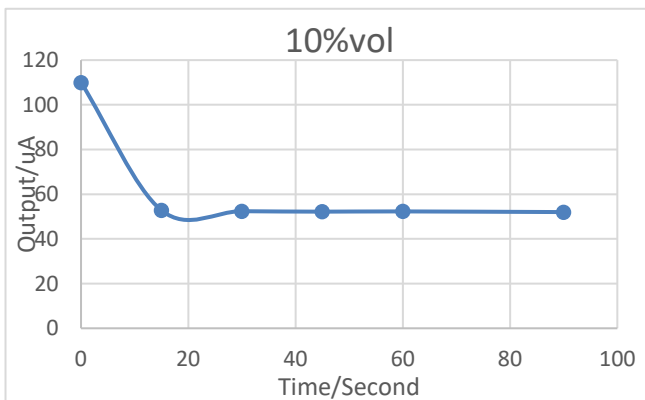
- * Industrial monitors
- * HAVC oxygen monitoring
- * Oxygen analysis meter
- * Oxygen generator

MIX8410 is an electrochemical oxygen sensor developed by Mixsen. Under the catalysis of the electrode, a redox reaction occurs on the working electrode and the counter electrode, thereby generating a current. Through measure the current to get the concentration of oxygen.



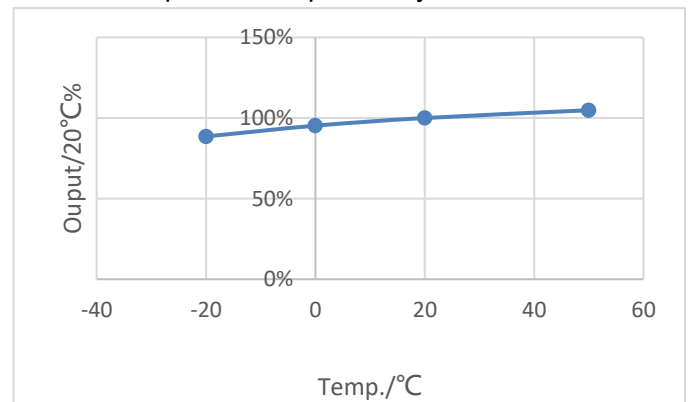
Sensitivity Characteristics:

MIX8410 (25° C) linear output

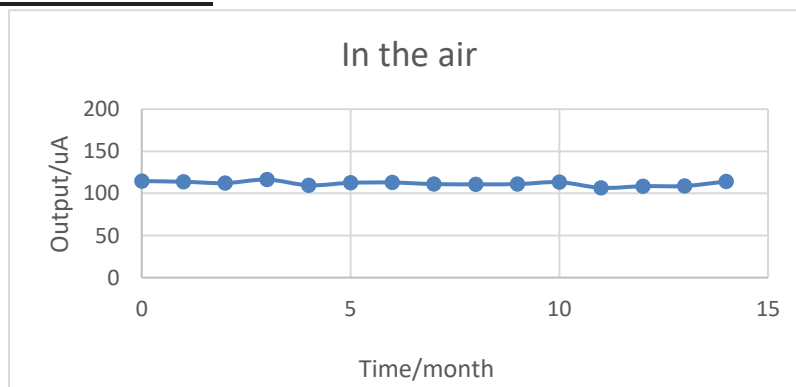


Temperature dependency:

MIX8410 temperature dependency



Stability Characteristics:



Notice: In different applications used by different customers, the operation condition is different. Mixsen strongly recommend customers contact with Mixsen's technician, especially when the detect gases are not in target gases list, Mixsen cannot responsible if customers has not asked for specifically tested by Mixsen.

Specifications

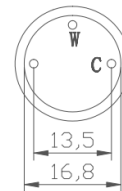
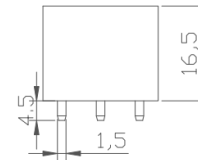
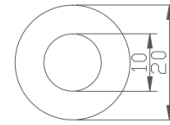
Item	Specification
Target Gas	Oxygen
Measurement Range	0 ~ 25%
Maximum Overload	30%
Sensitivity	0.1 ± 0.03 mA
Repeatability	$\pm 2\%$
Response Time (T90)	< 10 Seconds
Recommend Resistor	100 Ω
Long Term drift	<5% per year
Life Expectancy(in air)	2 Year
Operating Temperature Range	-20 ~ 50°C
Storage Temperature Range	0 ~ 50°C
Operating Humidity Range	15 ~ 90% RH, no-condensing

Note: All measurements were taken at 20°C and 50%RH at 1013hP

Operating Note:

- * Cutting the contact metal ribbon.
- * When soldering the metal ribbons, the soldering tin was forbidden to contact with the sensor.
- * Aging the sensor no less than 30 mins before operation.
- * Keeping the sensor out of the volatile solvent.
- * Prohibit storage and operating the sensor in acidic or alkaline environment.

Structure and Dimensions:



All dimensions in mm

All tolerance ± 0.1 mm, unless otherwise stated

Shenzhen Mixsen Electronics Co., Ltd

Add.: No.401 wangtang industrial area,
Xilixinwei Village, Nanshan district,
Shenzhen, China

Post: 518000

Tel: 86-0755-26517272

Mail: sales@mixsen.com

Website: www.mixsensensors.com