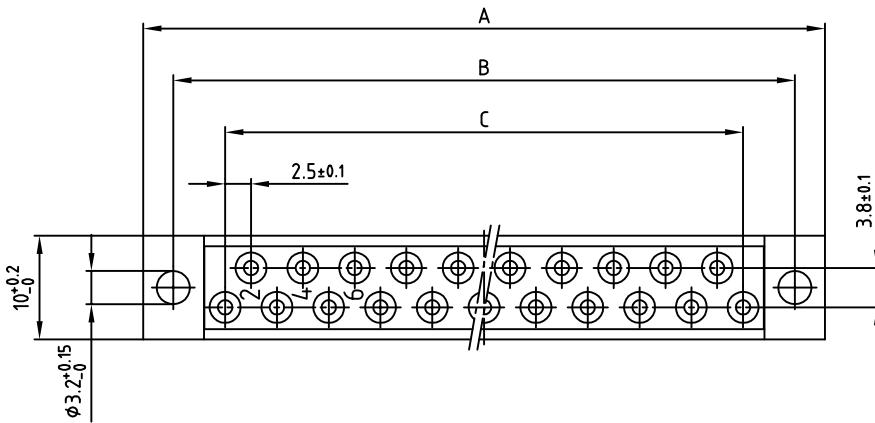
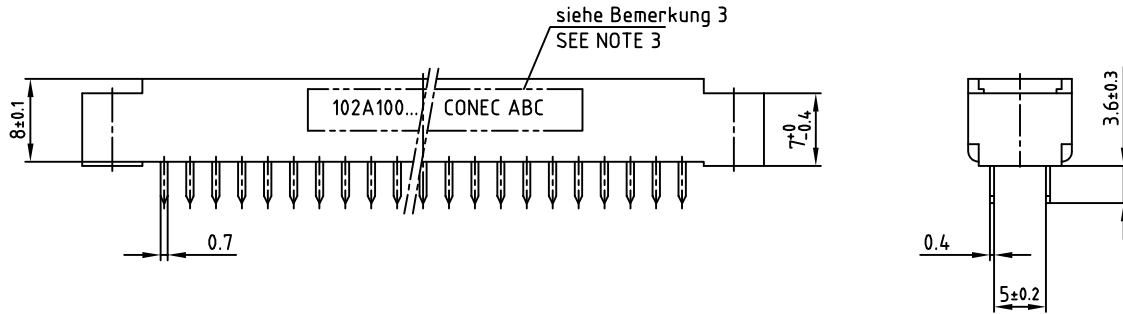
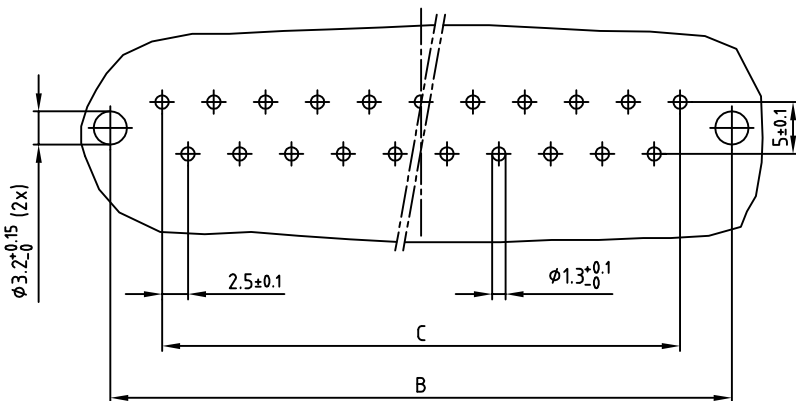


used for: DIN 41617

Part-NO.	POS.	A $-0.3$	B $\pm 0.1$	C $\pm 0.1$
102A10059X	13	45.8	40	12x2.5=30
102A10079X	21	65.8	60	20x2.5=50
102A10099X	31	90.8	85	30x2.5=75



Leiterplattenbohrbild  
P.C.B.-HOLE DRILLINGS (b)



- Bemerkung: (b)
1. Isolierkörper: PC GF UL 94 V-1, grau (c)
  2. Kontakte: Cu-Legierung  
Veredelung: min. Au über min. Ni
  3. Bedruckung: [Art.-Nr. CONEC ABC]

- NOTES:
1. INSULATOR: PC GF UL 94 V-1, GREY (c)
  2. CONTACTS: COPPER ALLOY  
PLATING: GOLD FLASH over NICKEL
  3. CONNECTOR IS PART MARKED: [PART-NO. CONEC ABC]

Directive 2002/95/EC RoHS compliant

THIS DRAWING MAY NOT BE COPIED OR REPRODUCED IN ANY WAY, AND MAY NOT BE PASSED ON TO A THIRD PARTY, WITHOUT WRITTEN PERMISSION. OWNERSHIP AND COPYRIGHT OF CONEC GMBH DO NOT ALTER CAD DRAWING BY HAND

rev.	description	date	name
2 x c	Ä4154	09.11.2011	K.H.
2 x b	Ä3723	18.08.2010	K.H.
a	Original		

tolerance		dim. in mm	
2004	date	name	
drawn	09.03.	Lehmenkühler	
appd.	09.03.	Mickenbecker	
norm	DIN 41617		

scale:	2:1		
material:	SEE NOTES		
title:	FEMALE CONNECTOR 13-31pos. Version "D" with straight solder pins		
dwg no:	10K1A008	DIN-A	3
part no:	SEE TABLE	sh:	1/1