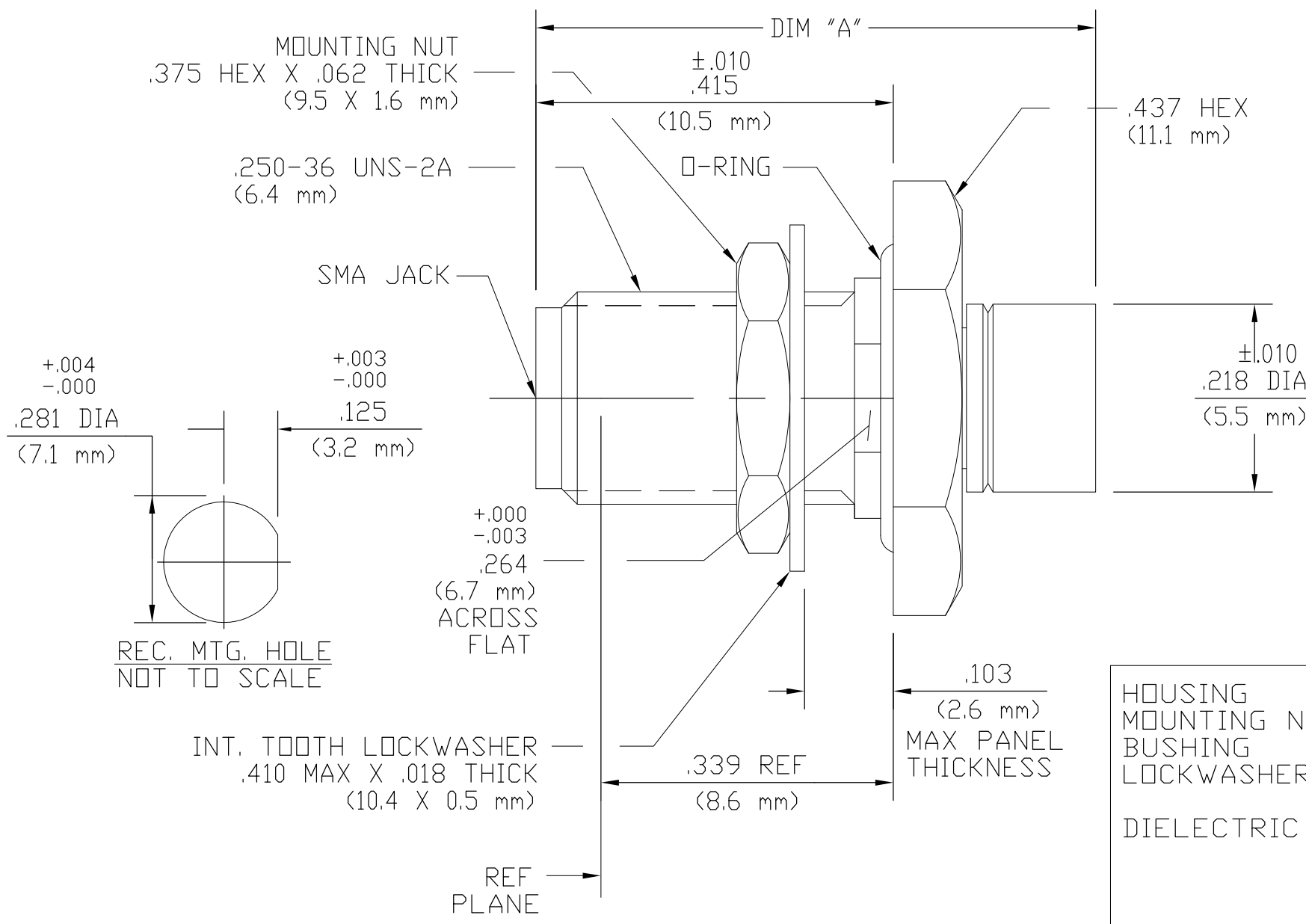


THIS DRAWING IS UNPUBLISHED. RELEASED FOR PUBLICATION
 © COPYRIGHT - By - ALL RIGHTS RESERVED.

LOC	DIST	REVISIONS			
P	LTR	DESCRIPTION	DATE	DWN	APVD
	A	REV PER ECO-12-020950	11DEC12	PY	DW



	DIM "A"
BEFORE CRIMPING	.765 REF (19.4 mm)
AFTER CRIMPING	.655 MAX (16.6 mm)

CABLE ENTRY DIAMETER MINIMUM	
HOUSING	.143
CONTACT	.037

COMPONENT	MATERIAL	FINISH
HOUSING MOUNTING NUT BUSHING LOCKWASHER	STAINLESS STEEL PER ASTM-A484 AND ASTM-A582, TYPE 303	PASSIVATE PER ASTM-A380
DIELECTRIC	TFE FLUOROCARBON PER MIL-P-19468 AND FED SPEC L-P-403 AND ASTM-D-1457	N/A
CENTER CONTACT	BERYLLIUM COPPER PER QQ-C-530, ALLOY 173	GOLD PLATE PER MIL-G-45204 OVER COPPER PLATE PER MIL-C-14550
O-RING	SILICONE RUBBER PER ZZ-R-765	N/A

- NOTES:
- DESIGNED FOR USE WITH .141 DIA SEMI-RIGID CABLE
 - CAPTURED CENTER CONTACT
 - PICTORIAL VIEW IS AFTER CRIMPING
 - MIN STRAIGHT CABLE LENGTH .341
 - IT IS SUGGEST TO BEND CABLE PRIOR TO CRIMPING
 - CRIMP BUSHING MAY BE PACKAGED UNASSEMBLED, ORIENT GROOVE AS SHOWN.

THIS DRAWING IS A CONTROLLED DOCUMENT.

DIMENSIONS: INCHES	TOLERANCES UNLESS OTHERWISE SPECIFIED:	DWN P. YEAGER 10DEC12	TE Connectivity
	0 PLC ± -	CHK D. WILSON 11DEC12	
	1 PLC ± -	APVD D. WILSON 11DEC12	
MATERIAL SEE TABLE	FINISH SEE TABLE	PRODUCT SPEC -	NAME OSM BULKHEAD FEEDTHRU CABLE JACK - COMPRESSION CRIMP M39012/83B3004 CAT-B
		APPLICATION SPEC -	SIZE A3
		WEIGHT -	CAGE CODE 00779
		CUSTOMER DRAWING	DRAWING NO C-1051031
			RESTRICTED TO -
			SCALE 1:1
			SHEET 1 OF 1
			REV A