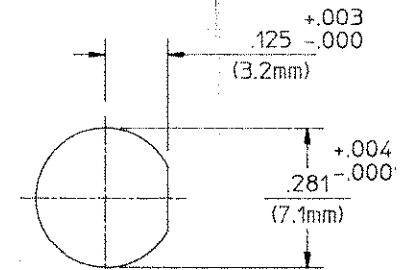
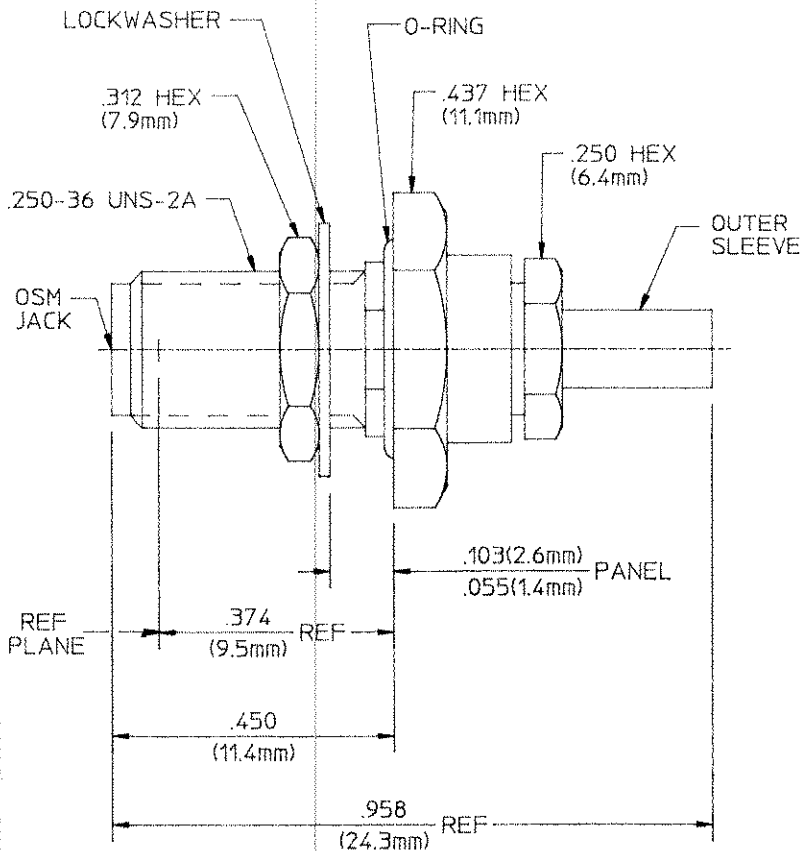


REV		REVISIONS DESCRIPTION	DATE	APPROVED
01 <sub>0</sub>		RELEASED	3-7-89	<i>[Signature]</i>



RECOMMENDED MOUNTING HOLE

COMPONENT	MATERIAL	FINISH
HOUSING CLAMP NUT MOUNTING NUT LOCKWASHER	STAINLESS STEEL PER ASTM-A484 AND ASTM- A582, TYPE 303	PASSIVATE PER ASTM A380
SLEEVE	STAINLESS STEEL PER ASTM-A484 AND ASTM- A582, TYPE 303	GOLD PLATE PER MIL-G-45204 OVER NICKEL PLATE PER QQ-N-290
DIELECTRIC	TFE FLUOROCARBON PER MIL-P-19468 AND FED SPEC L-P-403	N/A
DIELECTRIC	NYLON	N/A
CENTER CONTACT	BERYLLIUM COPPER PER QQ-C-530, ALLOY 173	GOLD PLATE PER MIL-G-45204 OVER COPPER PLATE PER MIL-C-14550
FERRULE	SOFT COPPER ALLOY	GOLD PLATE PER MIL-G-45204
O-RING	SILICONE RUBBER PER ZZ-R-765	N/A

- NOTES:
- DESIGNED FOR USE WITH RG-178/U CABLE
  - CAPTURED CENTER CONTACT

CABLE ENTRY DIAMETER MINIMUM	
FERRULE	.099
SLEEVE	.036
DIELECTRIC	.021
CONTACT	.021

UNLESS OTHERWISE SPECIFIED  
DIMENSIONS ARE IN INCHES  
TOLERANCE ON  
FRAC DEC ANGLES  
±.004 ±.005 ±.1°

These drawings and specifications are the property of Omni Spectra Incorporated and shall not be reproduced or copied or used in whole or in part as the basis for the manufacture or sale of metal without written permission.

DRAWN BY	M.Y.	DATE	3-6-89
CHECKED BY	L.R.	DATE	3-7-89
APPROVED BY	<i>[Signature]</i>	DATE	3-7-89
USE ASSY PROCEDURE			
NO. AP	20-538		

**Omni Spectra, Inc.**  
Microwave Connector Division

**Spectra**

TITLE  
SMA BULKHEAD FEEDTHRU CABLE JACK  
CRIMP ATTACH. M39012/59-3018 CAT.B

SIZE	CODE IDENT NO.		
B	26805	2034-8018-92	01 <sub>0</sub>
SCALE	5:1		SHEET 1 OF 1

CUSTOMER 1051987  
SHEET 1 OF 1  
REV 0