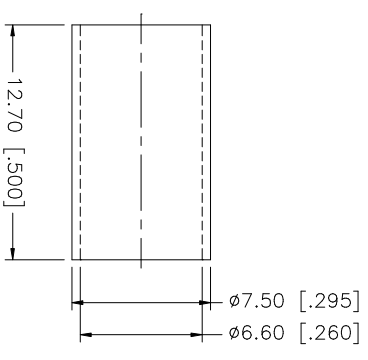
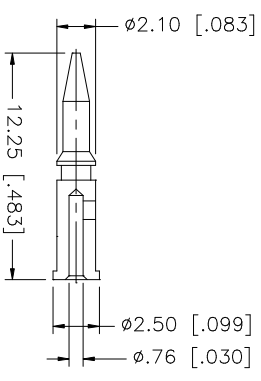
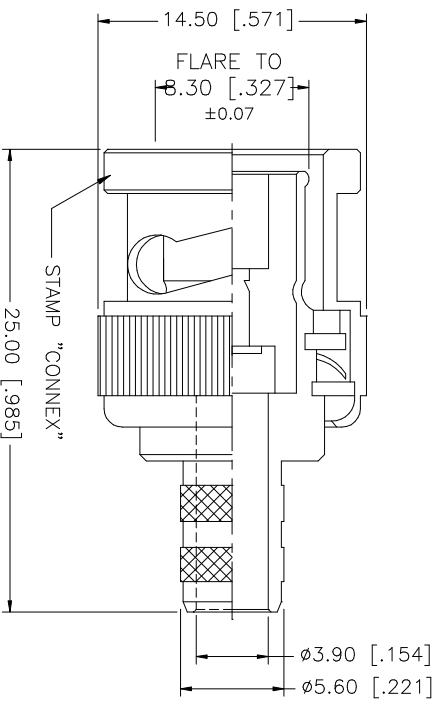
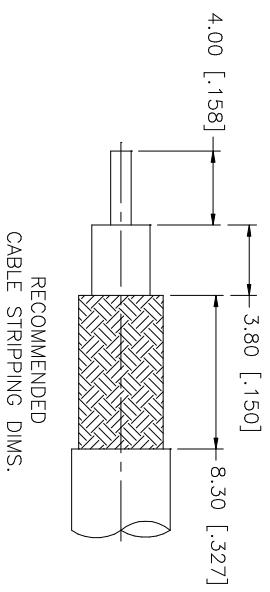


| REV. | DATE     | DESCRIPTION           |
|------|----------|-----------------------|
| A    | 11/19/03 | UPDATE DRAWING FORMAT |



- NOTE:
1. CRIMPED FERRULE  
HEX. CRIMP SIZE .255"
  2. CRIMPED CONTACT PIN  
HEX CRIMP SIZE .068"

| QTY | FINISH  | MATERIAL | DESCRIPTION |
|-----|---------|----------|-------------|
| 1   | NICKEL  | COPPER   | FERRULE     |
| 1   | GOLD    | BRASS    | CONTACT PIN |
| 1   | NATURAL | DELFIN   | INSULATOR   |
| 1   | NICKEL  | BRASS    | BODY        |

| UNLESS OTHERWISE SPECIFIED DIMENSIONS ARE IN MILLIMETERS. DIMENSIONS IN [ ] ARE IN INCHES AND FOR CUSTOMER REFERENCE ONLY. | UNLESS OTHERWISE SPECIFIED TOLERANCES FOR MILLIMETERS ARE: | UNLESS OTHERWISE SPECIFIED TOLERANCES FOR INCHES ARE: |
|--|--|---|
|  | 0.5 - 8mm ± 0.20mm   | .020 - .315 = ± 0.007"                                |
|  | 8 - 30mm ± 0.40mm  | .315 - 1.180 = ± 0.015"                               |
|  | 30 - 120mm ± 0.50mm  | 1.180 - 4.724 = ± 0.020"                              |

| APPROVALS    | DATE     | PART DESCRIPTION   |
|--------------|----------|--|
| DRAWN G.R.S. | 11/19/03 | <b>Amphenol Connex</b><br>BNC CRIMP PLUG<br>(FOR RG-59C/U CABLE)<br>112118 |
| CHECKED      |          |  |
| ISSUED       |          |  |

| CAD FILE          | DWG. NO.   | REV. | SIZE | SCALE |
|-------------------|------------|------|------|-------|
| C:/112/112118.DWG | 112118.DWG | A    | A    | NA    |