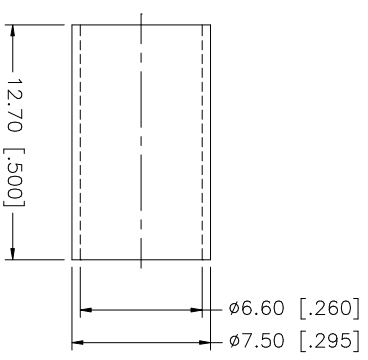
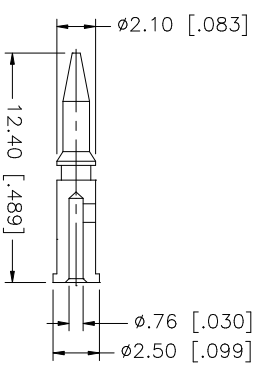
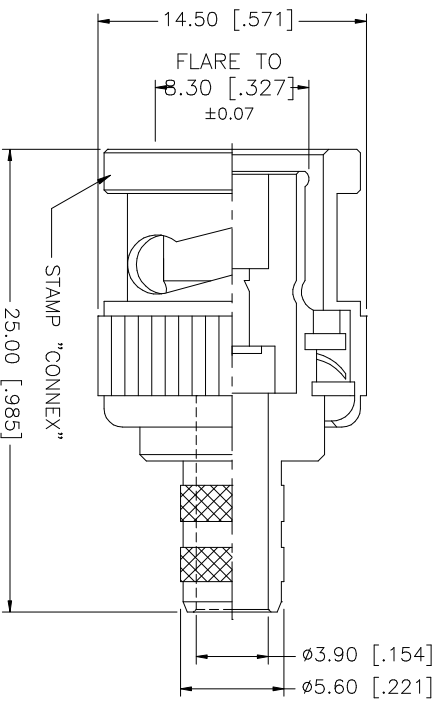
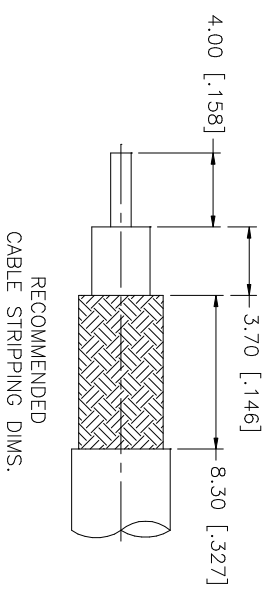


REV.	DATE	DESCRIPTION
A	01/04/04	UPDATE DRAWING FORMAT



8	DESCRIPTION	MATERIAL	FINISH	QTY	UNLESS OTHERWISE SPECIFIED DIMENSIONS ARE IN MILLIMETERS. DIMENSIONS IN [ ] ARE IN INCHES AND FOR CUSTOMER REFERENCE ONLY. TOLERANCES FOR MILLIMETERS ARE:	APPROVALS	DATE	PART DESCRIPTION		
7					0.5 - 8mm ± 0.20mm	DRAWN	G.R.S.	01/04/04	<b>Amphenol Connex</b> BNC CRIMP PLUG (FOR RG-59/U CABLE - 50ohm)	
6					8 - 30mm ± 0.40mm	CHECKED				
5					30 - 120mm ± 0.50mm	ISSUED				
4	FERRULE	COPPER	NICKEL	1	UNLESS OTHERWISE SPECIFIED TOLERANCES FOR INCHES ARE:	SHEET	1 OF 1			
3	CONTACT PIN	BRASS	GOLD	1	.020 - .315 = ± 0.007"	PART NO.		112122		
2	INSULATOR	DELRIN	NATURAL	1	.315 - 1.180 = ± 0.015"	DWG. NO.		112122.DWG		
1	BODY	BRASS	NICKEL	1	1.180 - 4.724 = ± 0.020"	REV.	A		SCALE	NA

UNLESS OTHERWISE SPECIFIED DIMENSIONS ARE IN MILLIMETERS. DIMENSIONS IN [ ] ARE IN INCHES AND FOR CUSTOMER REFERENCE ONLY. TOLERANCES FOR MILLIMETERS ARE:  
 0.5 - 8mm ± 0.20mm  
 8 - 30mm ± 0.40mm  
 30 - 120mm ± 0.50mm  
 UNLESS OTHERWISE SPECIFIED TOLERANCES FOR INCHES ARE:  
 .020 - .315 = ± 0.007"  
 .315 - 1.180 = ± 0.015"  
 1.180 - 4.724 = ± 0.020"  
 DO NOT SCALE DRAWING

APPROVALS	DATE
DRAWN G.R.S.	01/04/04
CHECKED	
ISSUED	
SHEET 1 OF 1	

**Amphenol Connex**  
 BNC CRIMP PLUG  
 (FOR RG-59/U CABLE - 50ohm)  
 112122