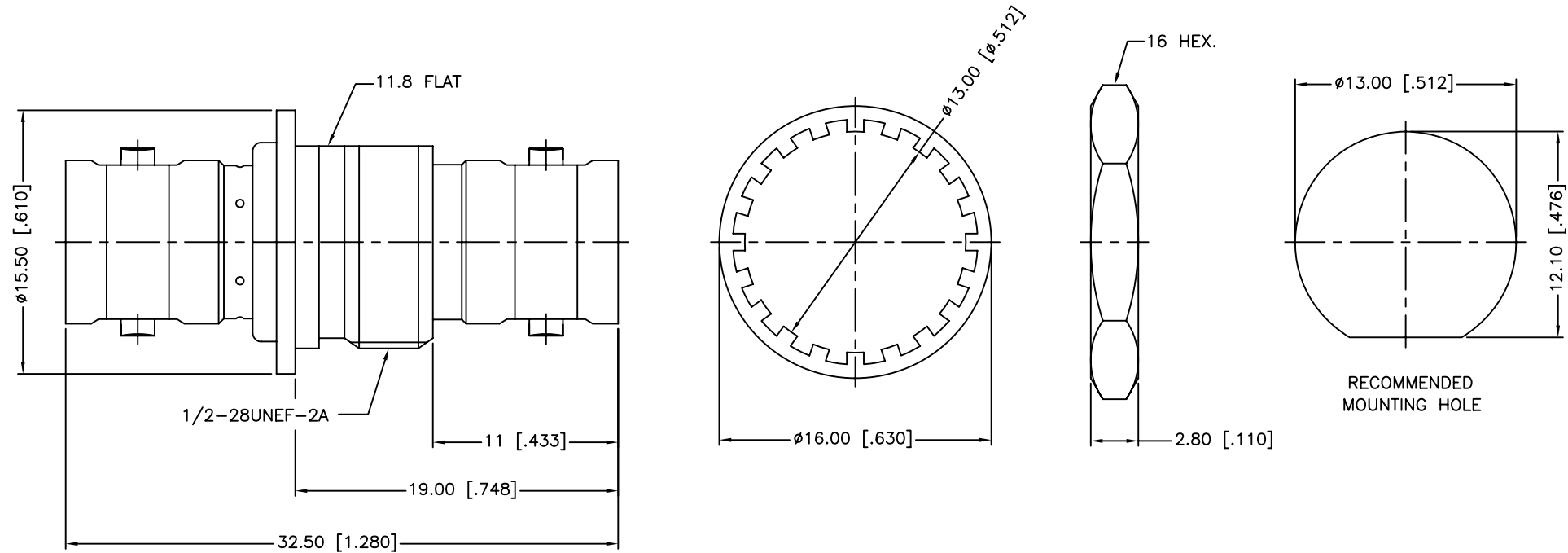


REV.	DATE	ECR NO.	DESCRIPTION
A	01/07/04	XXXXXX	UPDATE DRAWING FORMAT
B	06/22/11	2186	ADD NOTE 1, 2, 3



1. IMPEDANCE: 75 OHMS
2. FREQUENCY RANGE: 0-1 GHz
3. MAX. PANEL THICKNESS: 4.5MM

				UNLESS OTHERWISE SPECIFIED DIMENSIONS ARE IN MILLIMETERS. DIMENSIONS IN [ ] ARE IN INCHES AND FOR CUSTOMER REFERENCE ONLY.	APPROVALS	DATE	<b>Amphenol Connex</b>						
5	HEX NUT	BRASS	NICKEL	1	DRAWN	M.ZHANG				06/22/11	PART DESCRIPTION <b>BNC FEMALE TO FEMALE BULKHEAD ISOLATED ADAPTOR - 75 OHM</b>		
4	LOCK WASHER	BRASS	NICKEL	1	CHECKED			PART NO. <b>112440</b>					
3	CONTACT PIN	PHOSPHOR BRONZE	GOLD	1	ISSUED						DWG. NO. 112440.DWG		
2	INSULATOR	DELIN	NATURAL	1	SHEET	1 OF 1		REV.	B	SIZE			
1	BODY	BRASS	NICKEL	1	CAD FILE	C:/CONNEX/112440.DWG							
DESCRIPTION				MATERIAL	FINISH	QTY	DO NOT SCALE DRAWING						

UNLESS OTHERWISE SPECIFIED DIMENSIONS ARE IN MILLIMETERS. DIMENSIONS IN [ ] ARE IN INCHES AND FOR CUSTOMER REFERENCE ONLY.

UNLESS OTHERWISE SPECIFIED TOLERANCES FOR MILLIMETERS ARE:  
 0.5 - 8mm  $\pm 0.20$ mm  
 8 - 30mm  $\pm 0.40$ mm  
 30 - 120mm  $\pm 0.50$ mm

UNLESS OTHERWISE SPECIFIED TOLERANCES FOR INCHES ARE:  
 .020 - .315 =  $\pm 0.007$ "  
 .315 - 1.180 =  $\pm 0.015$ "  
 1.180 - 4.724 =  $\pm 0.020$ "

DO NOT SCALE DRAWING

APPROVALS	DATE
DRAWN M.ZHANG	06/22/11
CHECKED	
ISSUED	
SHEET 1 OF 1	
CAD FILE	C:/CONNEX/112440.DWG

<b>Amphenol Connex</b>			
PART DESCRIPTION <b>BNC FEMALE TO FEMALE BULKHEAD ISOLATED ADAPTOR - 75 OHM</b>			
PART NO. <b>112440</b>			
DWG. NO.	112440.DWG	REV.	B
SIZE	A	SCALE	NA