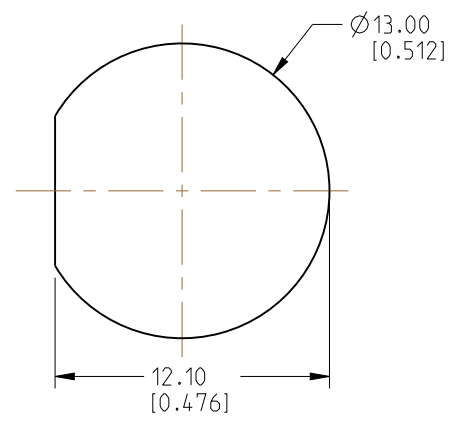


NOTES:

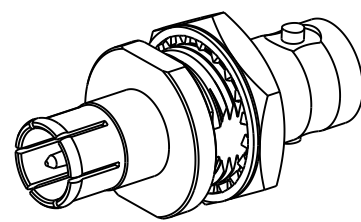
1. MATERIALS AND FINISHES:  
 BODY, LOCK RING, LOCK WASHER & HEX-NUT - BRASS, NICKEL PLATING  
 INSULATOR - PTFE, NATURAL  
 CONTACT - PHOSPHOR BRONZE, GOLD PLATING
2. ELECTRICAL:  
 A. IMPEDANCE: 75 OHM  
 B. FREQUENCY RANGE: DC-12 GHz  
 C. RETURN LOSS: -20 dB MIN. @ DC-6 GHz  
                   -15 dB MIN. @ 6-12 GHz  
 D. DIELECTRIC WITHSTANDING VOLTAGE: 1500 VRMS, MIN.
3. MECHANICAL:  
 A. DURABILITY: 500 CYCLES MIN.  
 B. TEMPERATURE RANGE: -65°C TO +165°C

4. PACKAGING:  
 A. QUANTITY: SINGLE PACK  
 B. MARKING: PACKAGING TO BE MARKED  
    "AMPHENOL RF, 112532-12G AND DATE CODE"

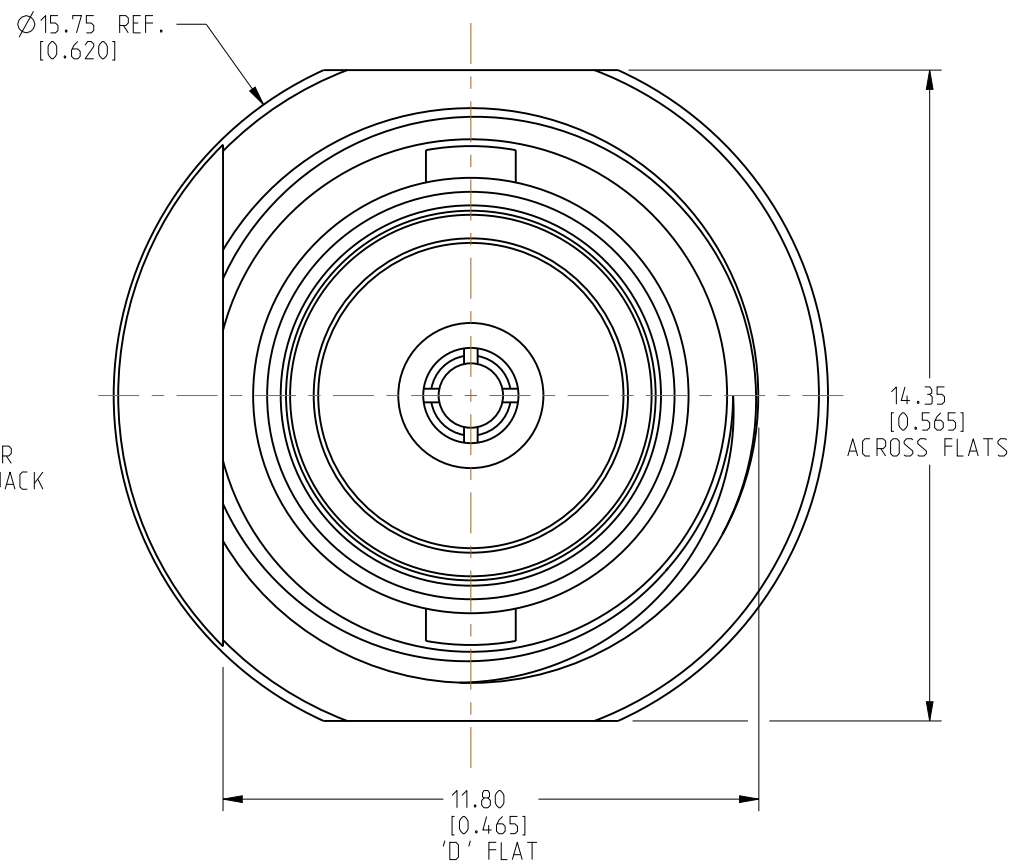
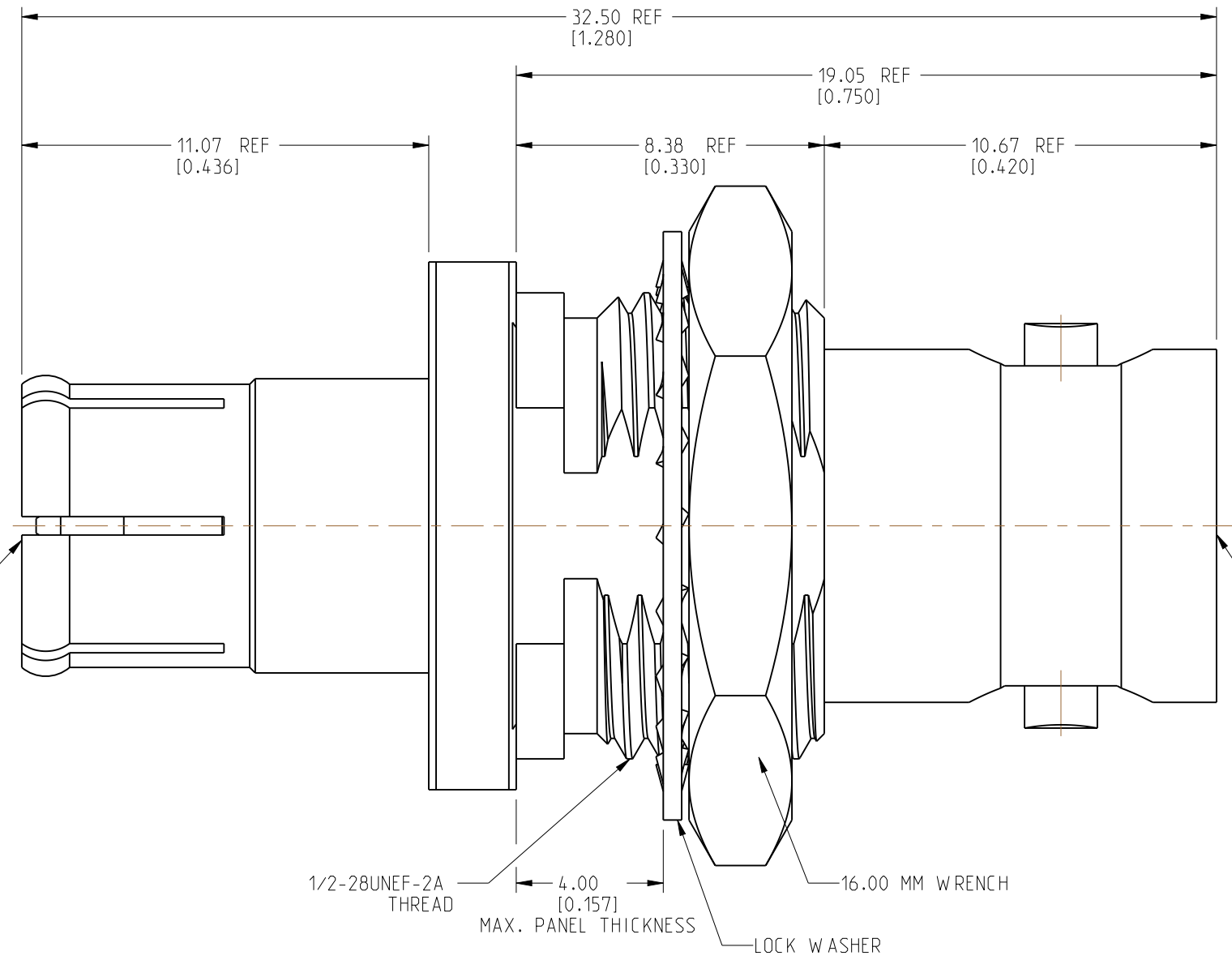


**RECOMMENDED MOUNTING HOLE DIMENSIONS**

REVISIONS				
REV	DESCRIPTION	DATE	ECN	BY
A	RELEASE TO MFG.	08-MAY-23	16655	SH



SCALE 1.500



**HEX-NUT & LOCKWASHER NOT SHOWN**

**CUSTOMER OUTLINE DRAWING**

ALL OTHER SHEETS ARE FOR INTERNAL USE ONLY

NOTICE: These drawings, specifications, or other data (1) are, and remain the property of Amphenol corp. (2) must be returned upon request; and (3) are confidential and not to be disclosed to any person other than those to whom they are given by Amphenol Corp. The furnishing of these drawings, specifications, or other data by Amphenol Corp., or to any other person to anyone for any purpose is not to be regarded by implication or otherwise in any manner licensing, granting rights to permitting such holder or any other person to manufacture, use or sell any product, process or design, patented or otherwise, that may in any way be related to or disclosed by said drawings, specifications, or other data.

UNLESS OTHERWISE SPECIFIED DIMENSIONS ARE METRIC (INCHES) AND TOLERANCES ARE:  
 <0.5mm = ±0.05mm [ $<0.020 = \pm 0.002$ ]  
 0.5 - 6mm = ±0.1mm [ $>0.020 - 0.236 = \pm 0.004$ ]  
 >6.00 - 30mm = ±0.2mm [ $>0.236 - 1.181 = \pm 0.008$ ]  
 >30.00 - 120mm = ±0.3mm [ $>1.181 - 4.725 = \pm 0.012$ ]  
 ANGLES = ±1°

MATERIAL: SEE NOTES  
 ENGR.1: KARTHIK R  
 ENGR.2: M.ZHANG  
 DATE: 24-MAR-23

TITLE: 75 OHM PUSH ON BNC STR PLUG TO JACK ADAPTER  
 SHEET NO. 2 OF 2  
 SCALE: 6.0:1.0

Amphenol RF		REV	A	
		SIZE		B
		DRAWING NO.		112532-12G
	ITEM NO.	112532-12G		
	PART NO.	112532-12G		



REFERENCE: EAR# 11691