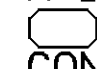
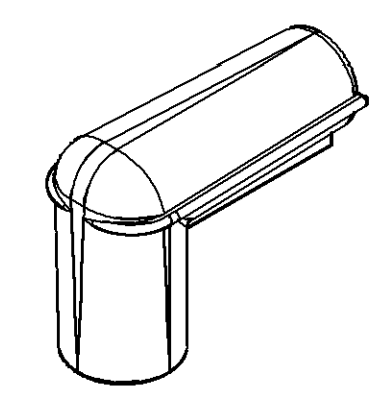
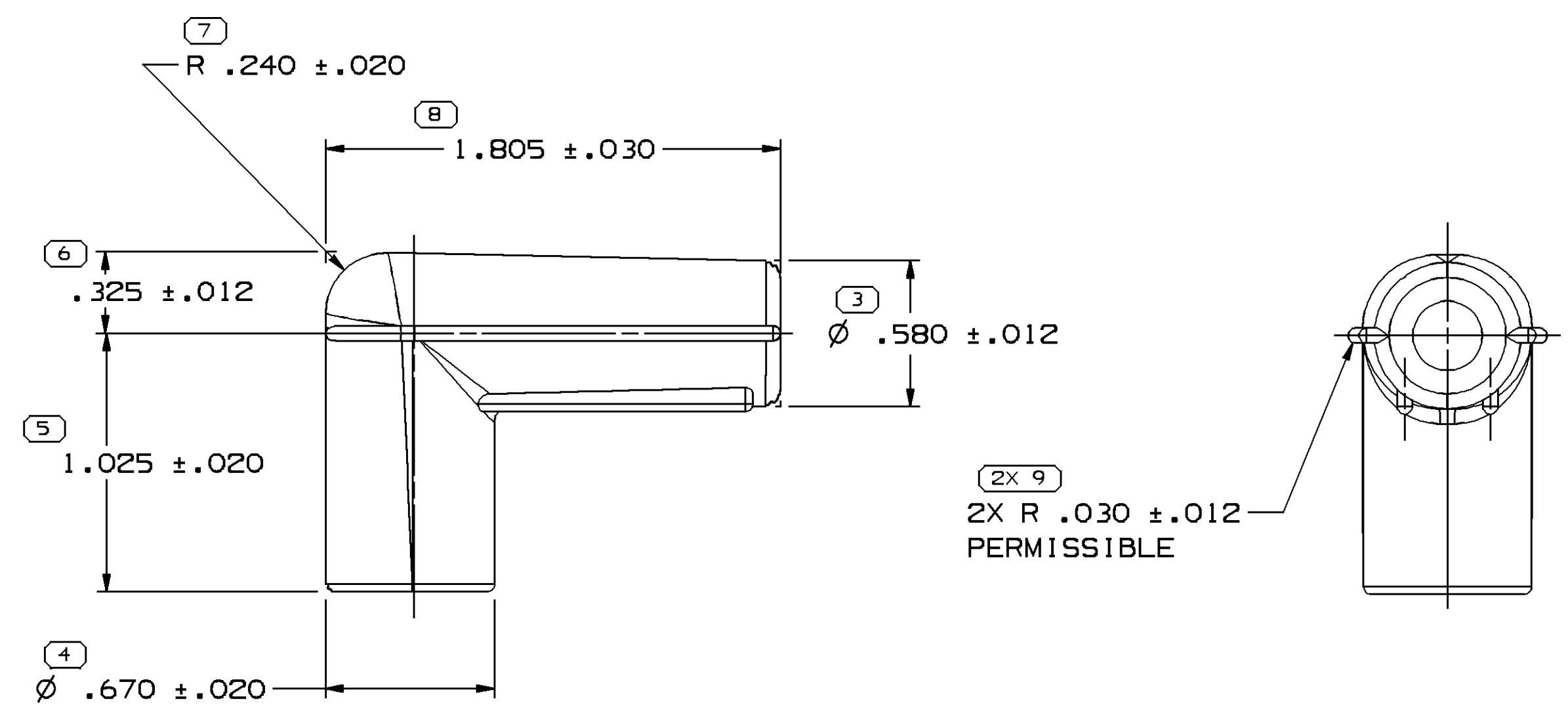
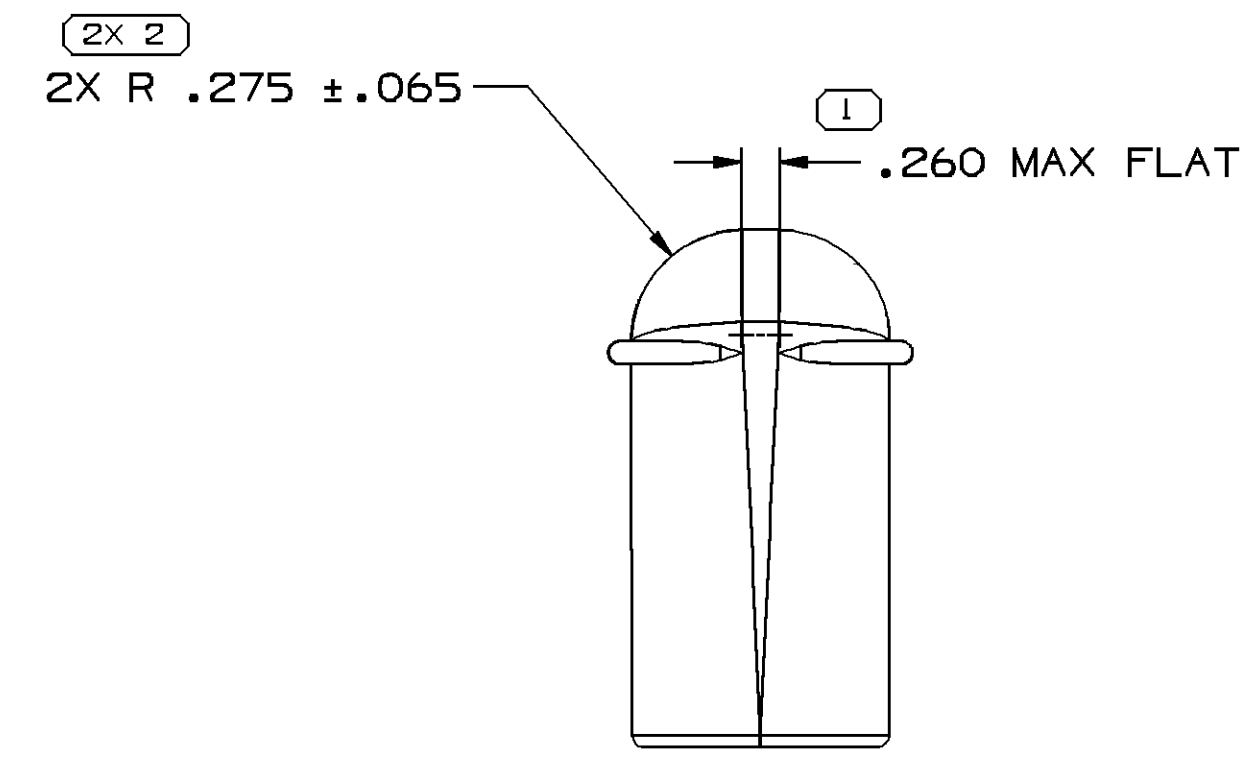
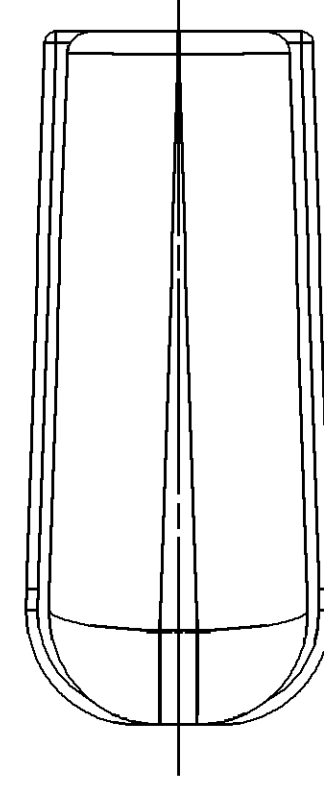


SYMBOL DEFINITION		MISSING SYMBOLS	
A DIMENSION WITHOUT AN INSPECTION REPORT SYMBOL  DOES NOT REQUIRE INSPECTION. IT MAY BE CONTROLLED ON THE INDIVIDUAL COMPONENT DRAWING.	TOTAL NO OF INSPECTIONS REQUIRED	NO MISSING SYMBOL NUMBER	
	11		
	LAST NO. USED		
	9		

DWG STATUS				ZONE	REVISION HISTORY	AUTH	DR	APVD1	APVD2
DATE	STG	REV	N/P						
23JA97	R	B	3	-	MAT'L WAS R-66249 & REDRAWN	177023	CRM	JVS	
06MY03	R	B	04	-	M4992002 WAS R0072830, REDRAWN TO CURRENT FORMAT, TOLERANCE CHART AND TOLERANCE VALUES UPDATED TO CURRENT FORMAT: UNDER QUALIFICATION NOTE: EST-486 WAS EST-327F	240772	PJC	PJC	CWA
05DE06	R	B5	-	-	MAT'L SPEC WAS M4992002 & REVISED NOTES	287342	RMG	JAA	RAT
09JA07	R	B6	-	-	MAT'L SPEC WAS M4990002	400055	JBD	JAA	RAT



SCALE 1:1

NOTES:

- ALL RADII .030, UNLESS OTHERWISE SPECIFIED.
- NIPPLE TO MATE WITH DELCO-REMY HIGH ENERGY IGNITION CAP.
- UNLESS OTHERWISE SPECIFIED AND/OR INDICATED: DIMENSIONS ARE TO FACE OF VIEW SHOWN AND AUTOMATICALLY ROUNDED BY COMPUTER FOR INSPECTION. (SEE MATH MODEL FOR PRECISE DIMENSION) FOR ALL OTHER DIMENSIONS NOT SHOWN BUT REQUIRED FOR TOOL BUILD, SEE MATH MODEL FOR PRECISE TOOL PATH DATA.

QUALIFICATION NOTE:

PARTS TESTED TO ES-T-486 WILL HAVE A MINIMUM AVERAGE DIELECTRIC BREAK-DOWN VALUE OF 27KV(RMS) WITH NO TEST VALUE LESS THAN 23KV.

DIMENSIONAL RANGE (IN)		CHART	H
FROM	0	>.750	>1.250
TO	.750	1.250	2.750
TOLERANCE UNLESS OTHERWISE SPECIFIED			
	±.005	±.010	±.016
ANGULAR TOLERANCE		±2*	

DWG TYPE PART DRAWING	
STYLE	
VOLUME (CIP) 9,910	DISTR CODE D
UNLESS OTHERWISE SPECIFIED	
THIS DOCUMENT IS IN ACCORDANCE WITH ASME Y14.5M-1994 AS AMENDED BY THE 0M GLOBAL DIMENSIONING AND TOLERANCING ADDENDUM - 1997. ALL GEOMETRIC TOLERANCES AND RELATED DATUMS APPLY RFS. RULE #1 (PERFECT FORM AT MMC) DOES NOT APPLY WHEN RELATIONSHIP BETWEEN FEATURES IS ESTABLISHED BY ORIENTATION OR LOCATION TOLERANCES. SEPARATE POSITION CALLOUTS MAY BE GAGED SEPARATELY, REGARDLESS OF DATUM REFERENCE. ALL DIMENSIONS ARE IN INCHES.	
REFERENCE 12015572	THIRD ANGLE PROJECTION
DO NOT SCALE	USE MATH DATA

DELPHI
DELPHI PACKARD ELECTRIC SYSTEMS
WARREN, OH

DR	D.HAGG	DATE	19AU83
APVD1	D.HAGG		19AU83
APVD2	T.MUDREY		09SE83
APVD3	D.LISKA		12SE83
APVD4			
APVD5			

SUBSTANCES OF CONCERN AND RECYCLED CONTENT PER DELPHI 10949001

MATERIAL
M4992002 SILICONE BLK

DRAWING NAME
SLEV IGN BOOT BLK

DRAWING NUMBER
12034134

SIZE	SCALE	FRAME NO	SHEET NO	STG	REV	N/P
A1	2:1	1 OF 1	1 OF 1	R	B6	-