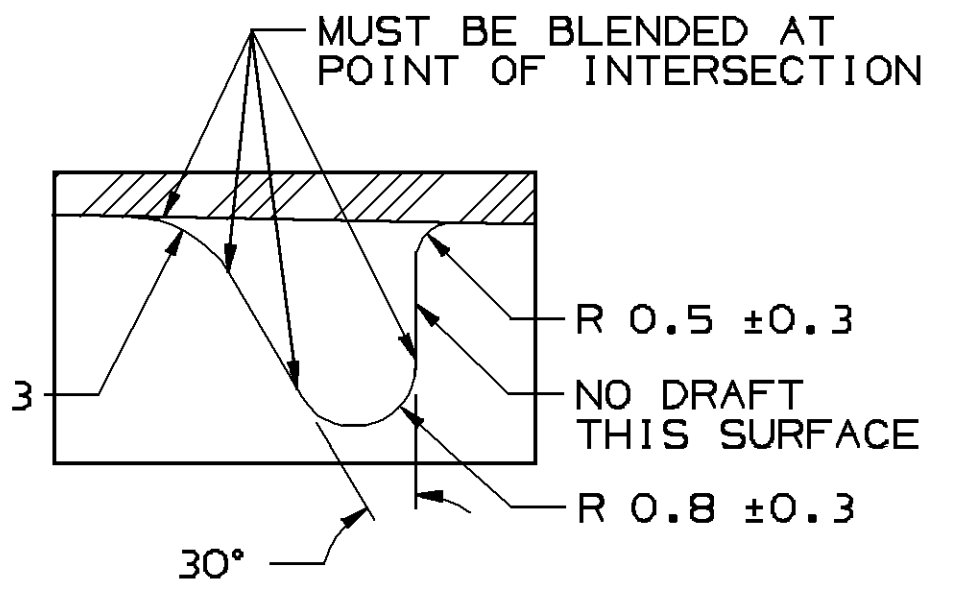
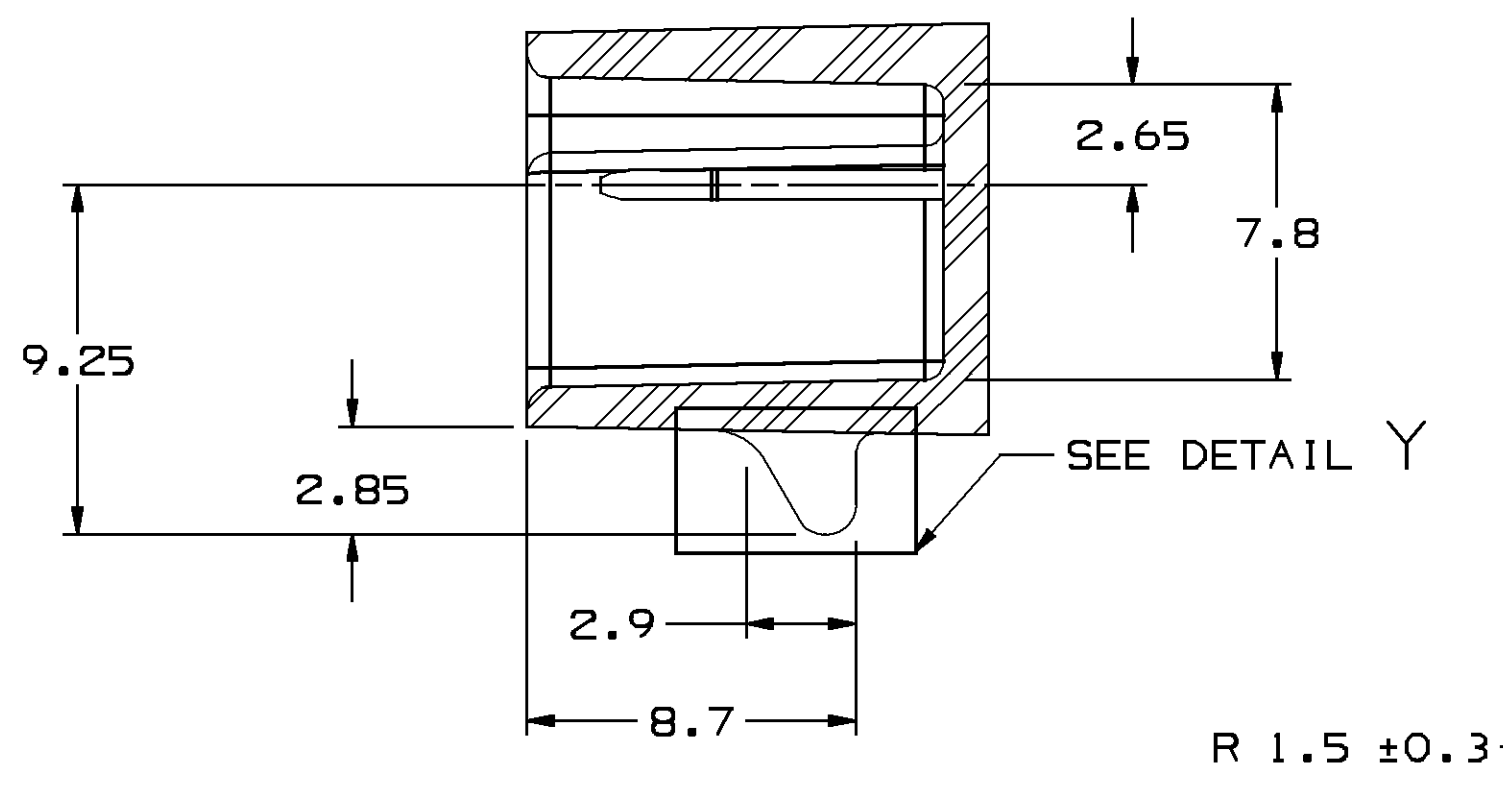
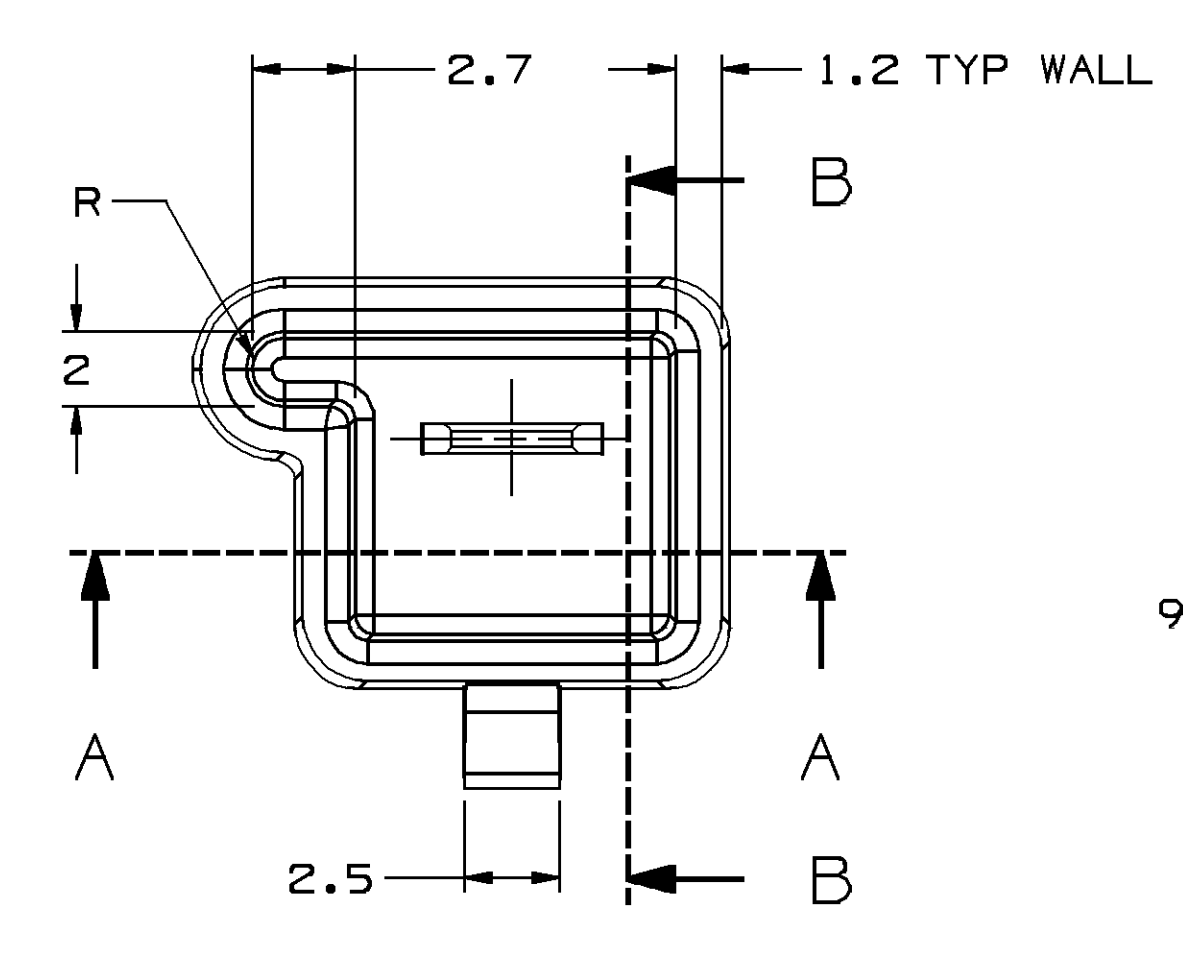


● THESE DIMENSIONS ARE CRITICAL TO THE MECHANICAL AND ELECTRICAL PERFORMANCE OF THE CONNECTION SYSTEM.

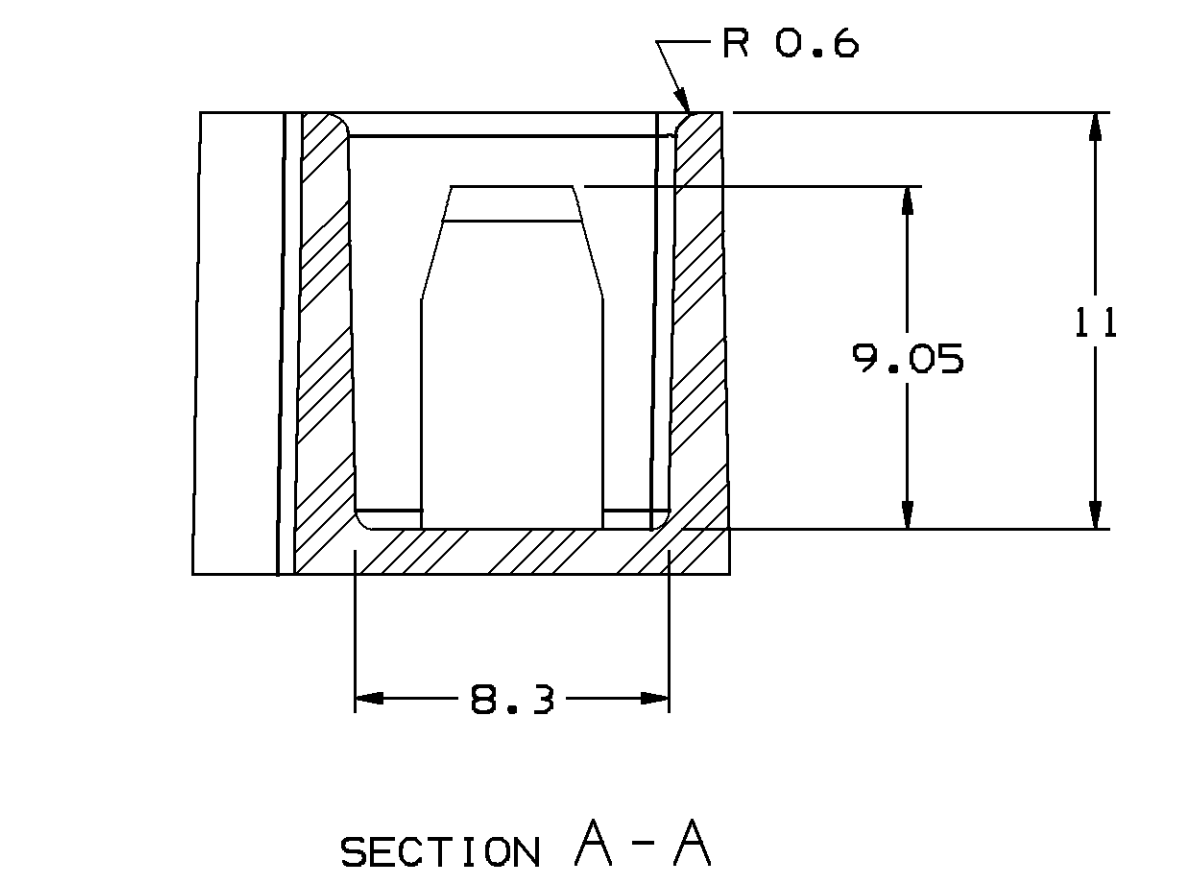
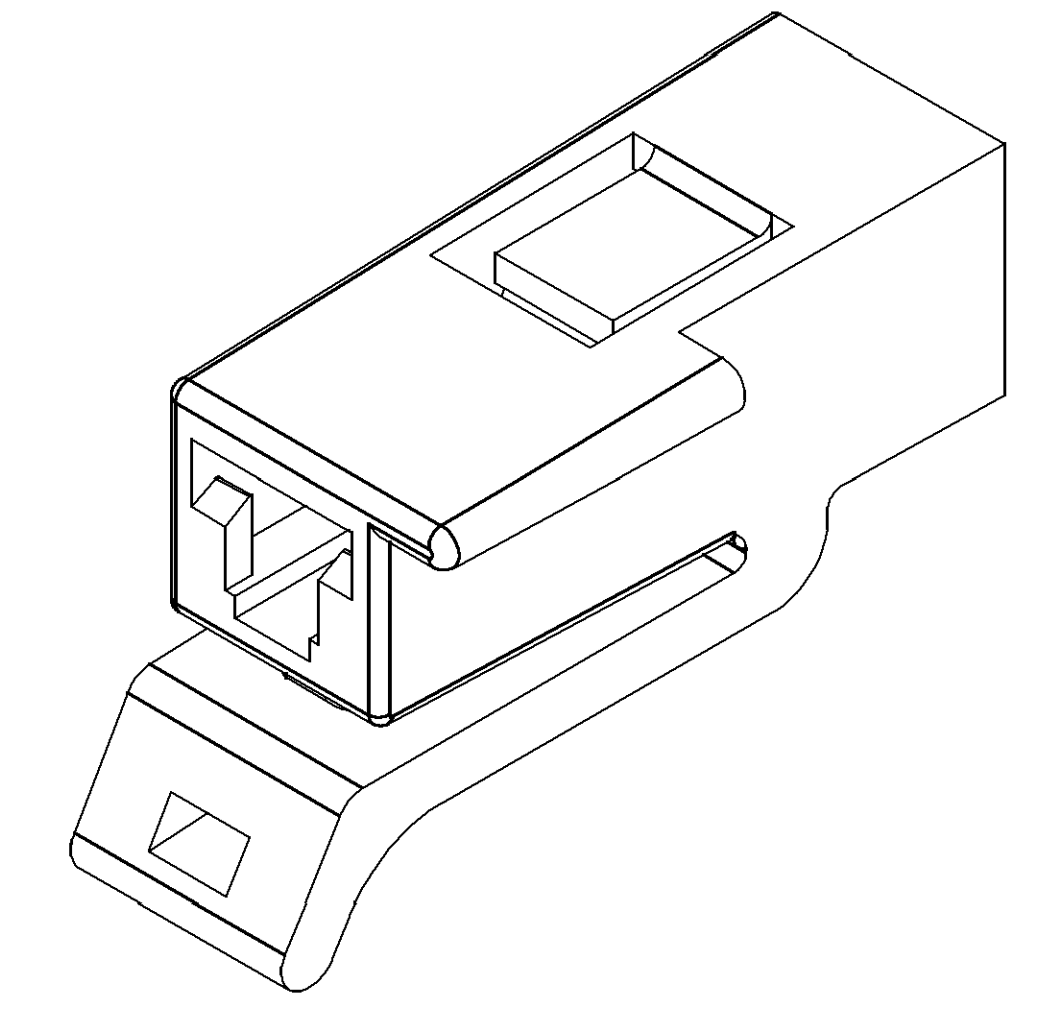
MATERIAL SPECIFICATIONS

- RECOMMENDED**
- BASE METAL - CDA-210, EXTRA SPRING TEMPER
 - * TIN PLATING (WHERE APPLICABLE TO 125°C MAX CONTINUOUS USAGE): 0.0050±0.0025 MM (200±100 μIN) ELECTROPLATED TIN.
 - * USAGE OF PLATING TYPES OTHER THAN RECOMMENDED MUST BE APPROVED BY DELPHI PACKARD ELECTRIC SYSTEMS ENGINEERING.
- MINIMUMS**
- ELECTRICAL CONDUCTIVITY - ≥28% IACS AT 20 °C. USE OF A MATERIAL WITH CONDUCTIVITY <28% IACS MUST BE APPROVED BY PACKARD ELECTRIC MATERIALS ENGINEERING.
 - TENSILE STRENGTH - 430 - 480 MPa
 - UNDERPLATING FOR TIN PLATING - FOR BASE MATERIALS CONTAINING 10% OR MORE ZINC, AN UNDERPLATE OF COPPER 0.0025 MM (100 μIN) MINIMUM THICK IS REQUIRED.
 - PROCESSING LUBRICANT - ANY PROCESSING LUBRICANT REMAINING ON TERMINALS MUST NOT VARNISH OR DEGRADE THE ELECTRICAL PERFORMANCE OF THE CONNECTION UP TO A MAXIMUM TEMPERATURE OF 150°C. PROCESSING LUBRICANTS MUST BE APPROVED BY DELPHI PACKARD ELECTRIC SYSTEMS ENGINEERING.

MATING BLADE INFORMATION



DETAIL Y
SCALE 10:1

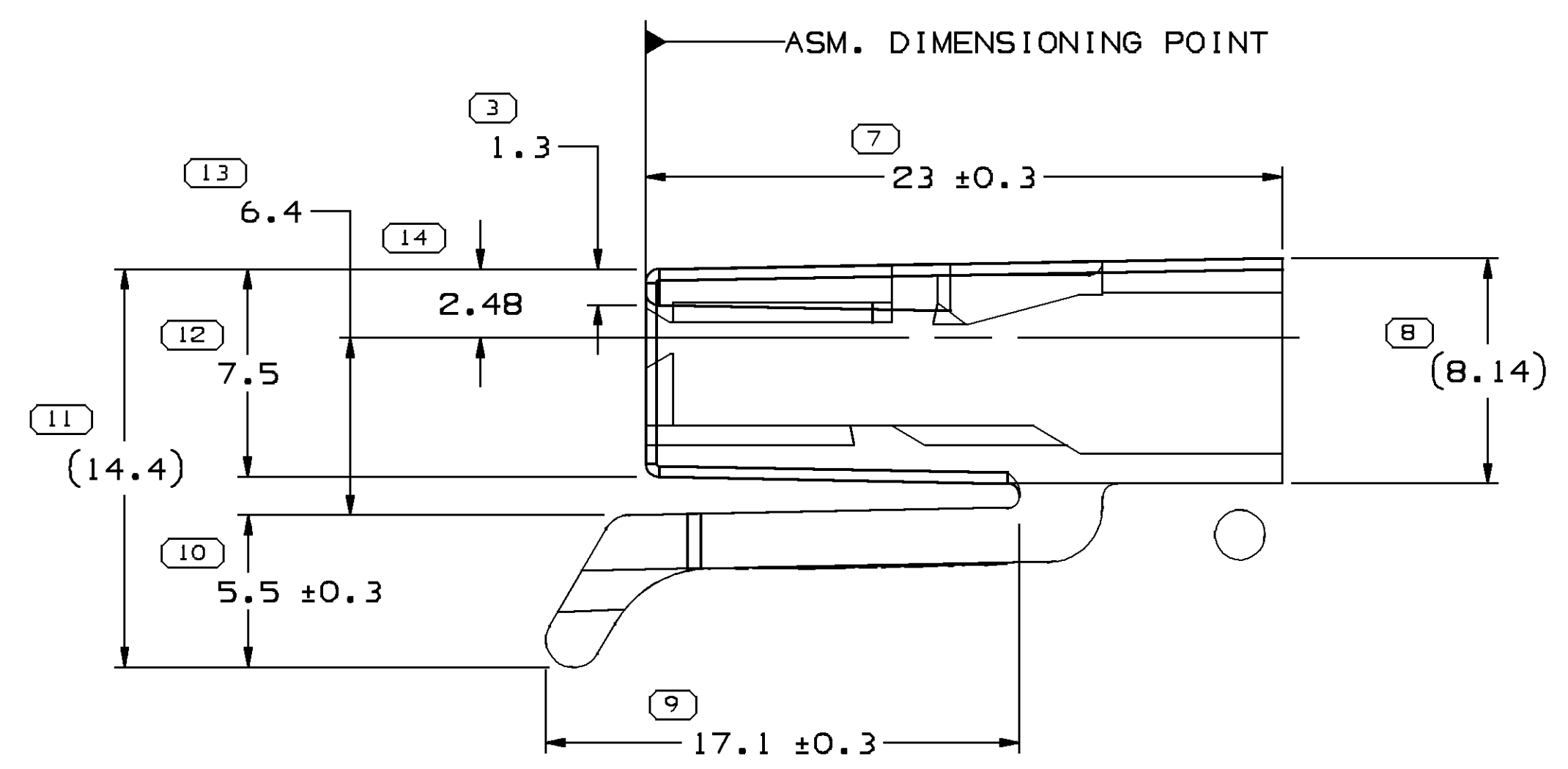
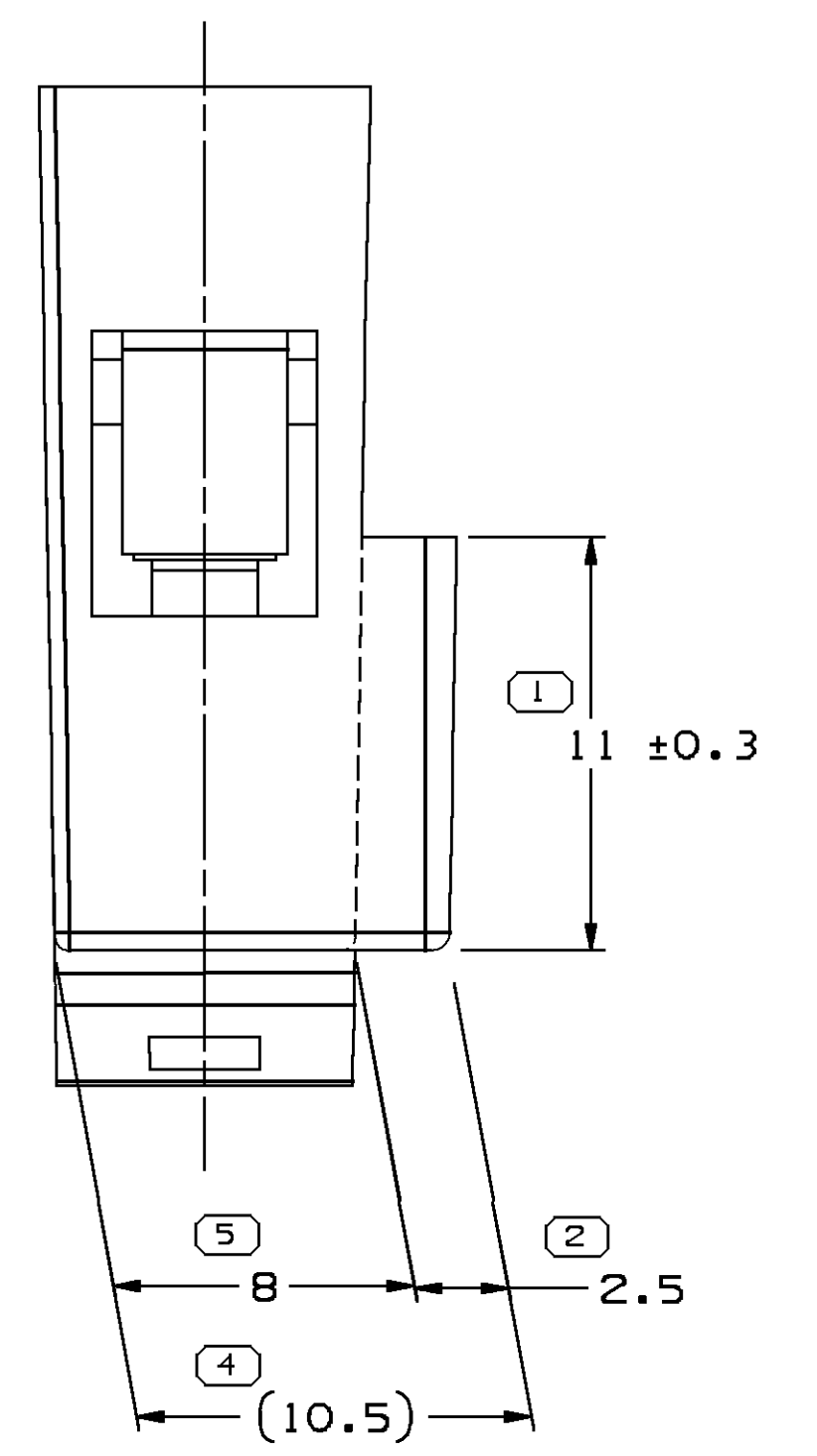


SECTION A-A

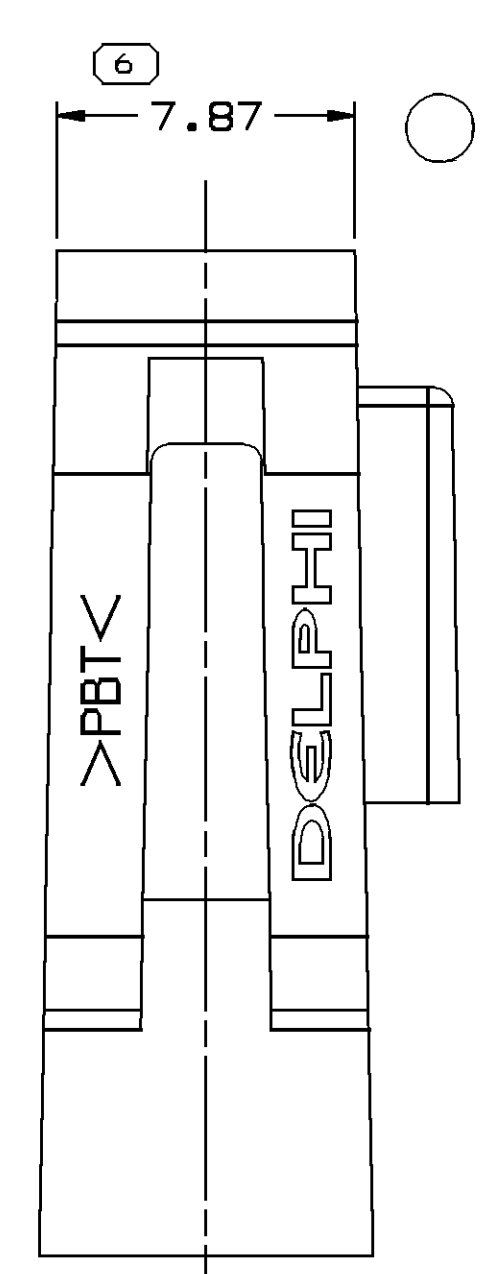
MATING CONNECTOR INFORMATION

RECOMMENDED MATERIAL - UNMODIFIED POLYESTER

- NOTES**
- UNLESS OTHERWISE SPECIFIED AND/OR INDICATED:
 - DIMENSIONS ARE TO FACE OF VIEW SHOWN AND AUTOMATICALLY ROUNDED BY COMPUTER FOR INSPECTION (SEE MATH MODEL FOR PRECISE DIMENSIONS). FOR ALL OTHER DIMENSIONS NOT SHOWN BUT REQUIRED FOR TOOL BUILD, SEE MATH MODEL FOR PRECISE TOOL PATH DATA. ALL RADII 0.5
 - DRAFT IS 1° MAX ON ALL OUTSIDE SURFACES.



- NOTES**
- UNLESS OTHERWISE SPECIFIED AND/OR INDICATED:
 - DIMENSIONS ARE TO FACE OF VIEW SHOWN AND AUTOMATICALLY ROUNDED BY COMPUTER FOR INSPECTION (SEE MATH MODEL FOR PRECISE DIMENSIONS). FOR ALL OTHER DIMENSIONS NOT SHOWN BUT REQUIRED FOR TOOL BUILD, SEE MATH MODEL FOR PRECISE TOOL PATH DATA.
 - MATERIAL RECYCLING CODE PER ISO 11469. (2.3)X(0.1) CHARACTERS AS SHOWN TO BE LOCATED ON ANY EXTERIOR SURFACE. OPTIONAL CONSTRUCTION TO BE NO MATERIAL RECYCLING CODE.
 - THIS PART IS NOT CONTROLLED FOR AUTOMATIC FEEDING.
 - REFERENCE MATING COMPONENTS OR EQUIVALENT:
 - CONNECTOR 12059885
 - (2.3)X(0.1) DELPHI CORPORATE BRAND TO BE LOCATED ON ANY EXTERIOR SURFACE, PREFERABLY VISIBLE AT FINAL ASSEMBLY. OPTIONAL CONSTRUCTION TO BE PED OR NO LOGO.



SYMBOL DEFINITION				TOTAL NO OF INSPECTIONS REQUIRED	MISSING SYMBOLS
□	A DIMENSION WITHOUT AN INSPECTION REPORT SYMBOL DOES NOT REQUIRE INSPECTION. IT MAY BE CONTROLLED ON THE INDIVIDUAL COMPONENT DRAWING.			14	NO MISSING SYMBOL NUMBER
□	LAST NO. USED			14	

DWG STATUS				REVISION HISTORY				AUTH	DR	APVD		
DATE	STG	REV	W/P	CHG	ZONE	CLEARED REV COL & CREATED PART DRAWING			277643	ACB	FKV	BDG
27FE06	R	B3	-	-	-							
18M106	R	B4	-	-	-	REMOVED DRAFT ON TOP SURFACE BEHIND LOCK AND REMOVED BLENDS TO MAKE MODEL MATCH PART			280075	RH	RH	BDG

DWG TYPE PART DRAWING		DATE																															
STYLE																																	
VOLUME 10/1	DISTR CODE																																
1,106	D																																
UNLESS OTHERWISE SPECIFIED																																	
THIS DOCUMENT IS IN ACCORDANCE WITH ASME Y14.5M-1994 AS MODIFIED BY THE IN-SITU DIMENSIONING AND TOLERANCE ADDENDUMS. SEPARATE MATING OR REFERENCE PARTS MAY BE DIMENSIONED SEPARATELY PER ASME Y14.5M-1994.																																	
ALL DIMENSIONS ARE IN MILLIMETERS																																	
REFERENCE																																	
THIRD ANGLE PROJECTION																																	
DO NOT SCALE																																	
USE MATH DATA																																	
<table border="1"> <thead> <tr> <th>DIMENSIONAL RANGE (MM)</th> <th>TOLERANCE</th> <th>ANGLE TOLERANCE</th> </tr> </thead> <tbody> <tr> <td>FROM > 0 TO > 20</td> <td>±0.15</td> <td>±1</td> </tr> <tr> <td>> 20 TO > 30</td> <td>±0.2</td> <td>±1</td> </tr> <tr> <td>> 30 TO > 70</td> <td>±0.3</td> <td>±1</td> </tr> <tr> <td>> 70 TO > 100</td> <td>±0.4</td> <td>±1</td> </tr> <tr> <td>> 100 TO > 150</td> <td>±0.5</td> <td>±1</td> </tr> <tr> <td>> 150 TO > 200</td> <td>±0.6</td> <td>±1</td> </tr> <tr> <td>> 200 TO > 250</td> <td>±0.7</td> <td>±1</td> </tr> <tr> <td>> 250 TO > 300</td> <td>±0.8</td> <td>±1</td> </tr> <tr> <td>> 300 TO > 400</td> <td>±1.0</td> <td>±1</td> </tr> </tbody> </table>				DIMENSIONAL RANGE (MM)	TOLERANCE	ANGLE TOLERANCE	FROM > 0 TO > 20	±0.15	±1	> 20 TO > 30	±0.2	±1	> 30 TO > 70	±0.3	±1	> 70 TO > 100	±0.4	±1	> 100 TO > 150	±0.5	±1	> 150 TO > 200	±0.6	±1	> 200 TO > 250	±0.7	±1	> 250 TO > 300	±0.8	±1	> 300 TO > 400	±1.0	±1
DIMENSIONAL RANGE (MM)	TOLERANCE	ANGLE TOLERANCE																															
FROM > 0 TO > 20	±0.15	±1																															
> 20 TO > 30	±0.2	±1																															
> 30 TO > 70	±0.3	±1																															
> 70 TO > 100	±0.4	±1																															
> 100 TO > 150	±0.5	±1																															
> 150 TO > 200	±0.6	±1																															
> 200 TO > 250	±0.7	±1																															
> 250 TO > 300	±0.8	±1																															
> 300 TO > 400	±1.0	±1																															

DELPHI
DELPHI PACKARD ELECTRIC SYSTEMS
WARREN, OH

DR	DATE
APV01 D. THOMAS	22AP87
APV02 J. COLDSNOW	27AP87
APV03 J. P. LITTLEFIELD	15JN87
APV04	
APV05	

SUBSTANCES OF CONCERN AND RECYCLED CONTENT PER DELPHI 10949001

MATERIAL: W4695002 PBT BLK

DRAWING NAME:
CONN I F M/P 480 BLK

DRAWING NUMBER:
12059884

SIZE	SCALE	FRAME NO	SHEET NO	STG	REV	W/P
A0	5:1	1	1	1	R	B4