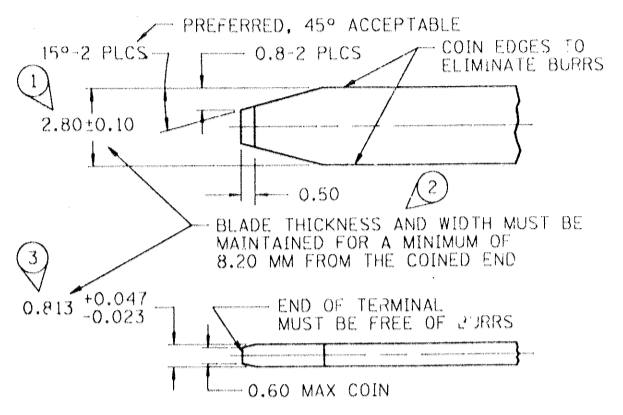


1208 4365

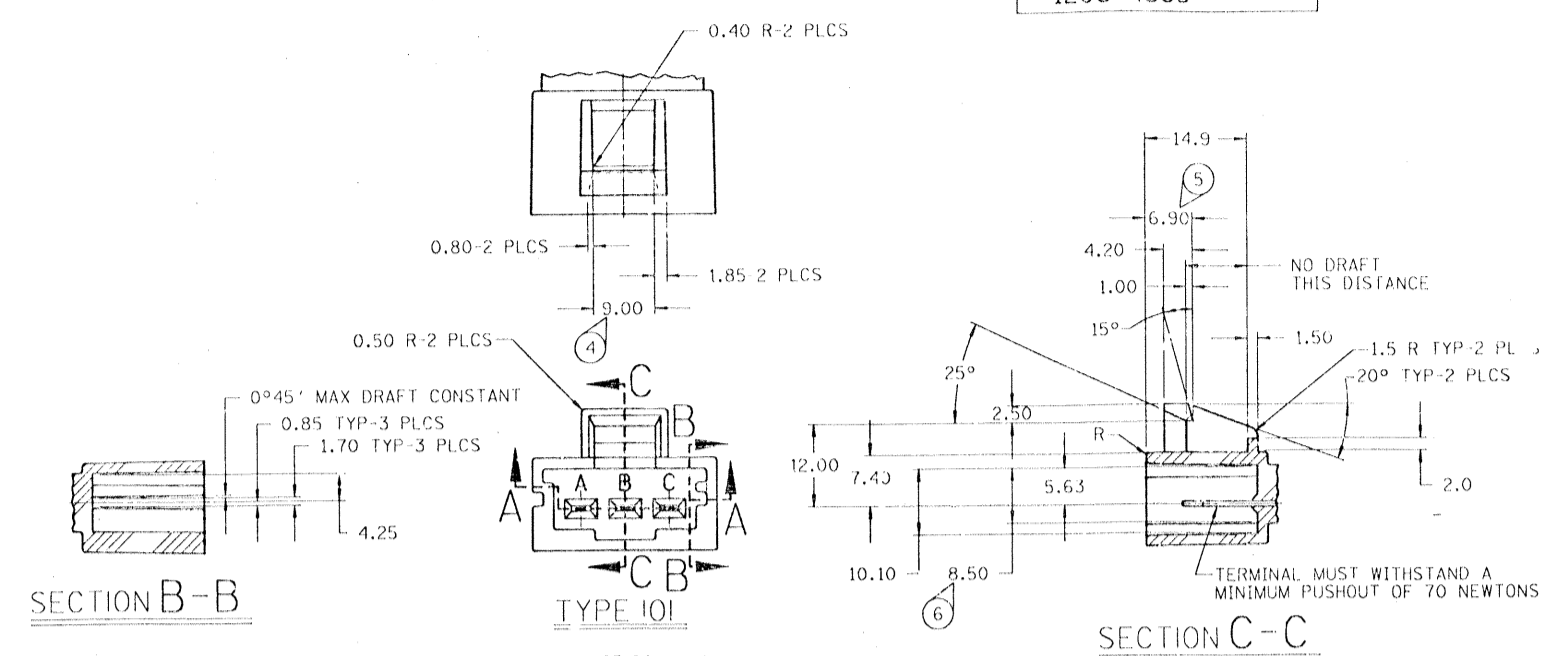


**MATERIAL SPECIFICATIONS**

**RECOMMENDED**  
 BASE METAL - CDA-210, GILDING, EXTRA SPRING TEMPER  
 PLATING - 0.0050±0.0025 MM THICK TIN

**MINIMUMS**  
 ELECTRICAL CONDUCTIVITY - ≥ 20% IACS @ 20°C. USE OF A MATERIAL WITH CONDUCTIVITY < 20% IACS MUST BE APPROVED BY PACKARD ELECTRIC MATERIALS ENGINEERING.  
 TENSILE STRENGTH - 407 MPa  
 PLATING - FOR LOW ENERGY ( ≤ 5v ) AND NON-PASSENGER COMPARTMENT POWER CIRCUITS, 0.0050±0.0025 MM THICK TIN. FOR MATERIALS CONTAINING 10% OR MORE ZINC, AN UNDERPLATE OF COPPER 0.0050±0.0025 MM THICK IS REQUIRED.

**MATING BLADE INFORMATION**  
 SCALE B:1



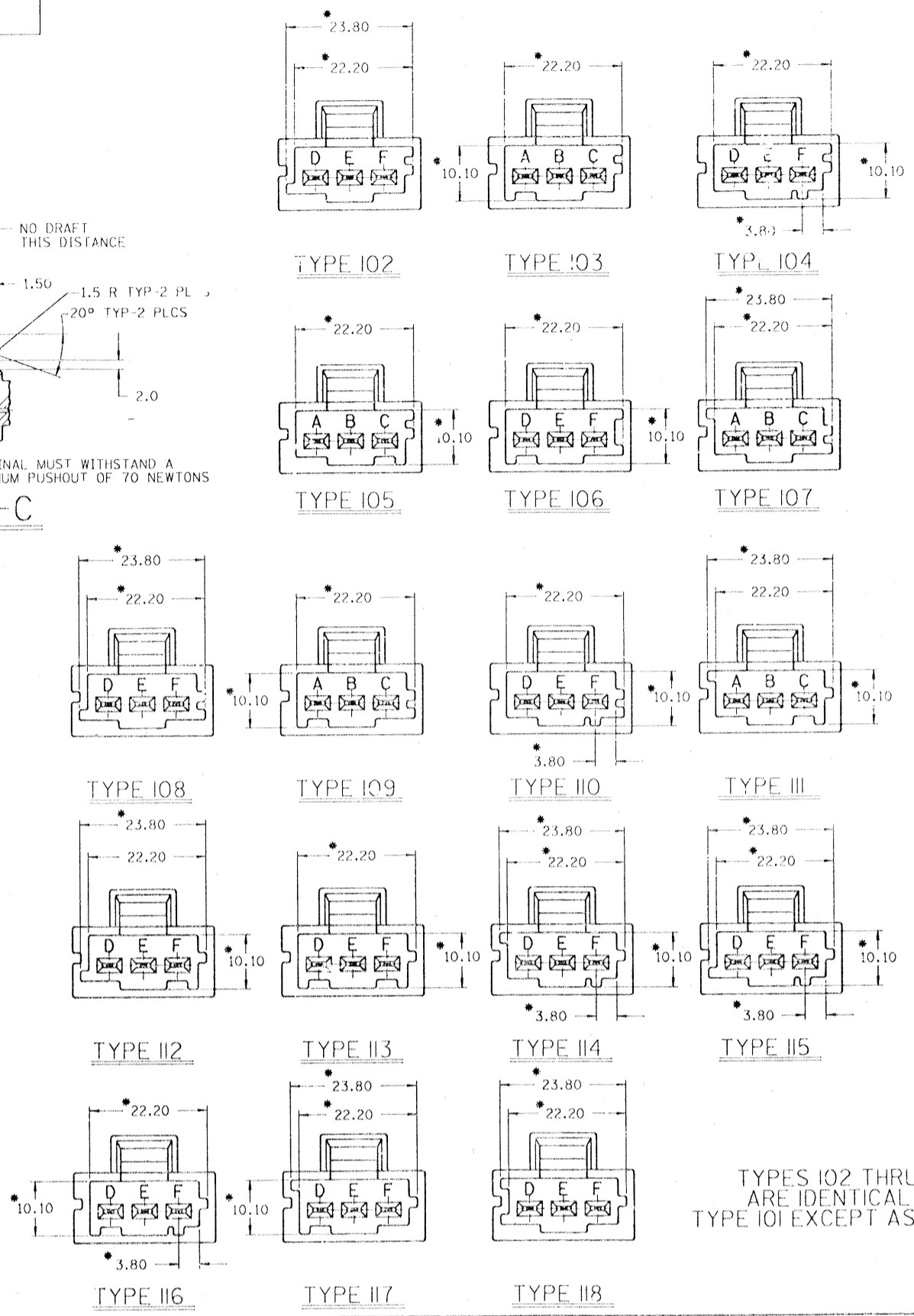
SECTION B-B

SECTION C-C

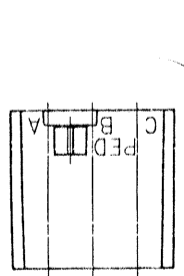
SECTION A-A

**MATING CONNECTOR INFORMATION**

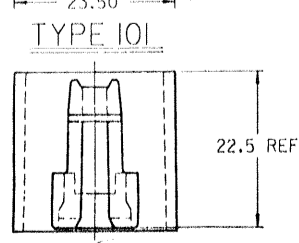
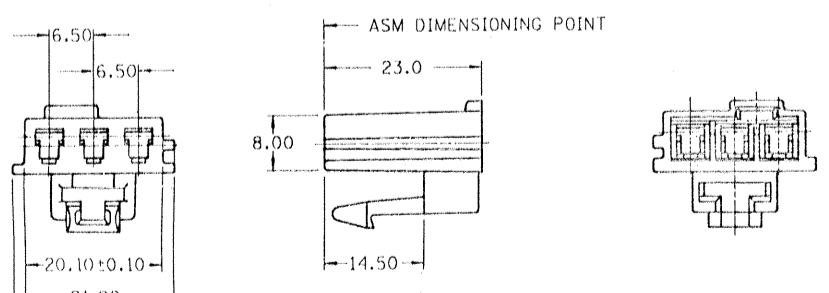
- NOTES**
1. ALL RADII 0.40, UNLESS OTHERWISE SPECIFIED.
  2. DIMENSIONS ARE TO FACE OF VIEW SHOWN UNLESS OTHERWISE INDICATED.
  3. 1° DRAFT ON ALL OUTSIDE SURFACES UNLESS OTHERWISE SPECIFIED.
  4. RECOMMENDED MATERIAL - CLASS FILLED PLYESTER OR NYLON 66.
  5. "\*" DENOTES DIMENSIONS MEASURED AT BOTTOM OF SHROUD.
  6. FOR PASSENGER SENSORS SUBSTITUTE "D" FOR "A", "E" FOR "B" AND "F" FOR "C".
  7. USE 12084364 TAXI AND INDIVIDUAL OUTLINE DRAWINGS FOR IN-LINE MATING CONNECTOR INFORMATION.
  8. WHEN USING THIS INFORMATION FOR A NEW DESIGN, REQUEST THE LATEST COPY OF THIS PRINT FROM PACKARD ELECTRIC DIVISION.



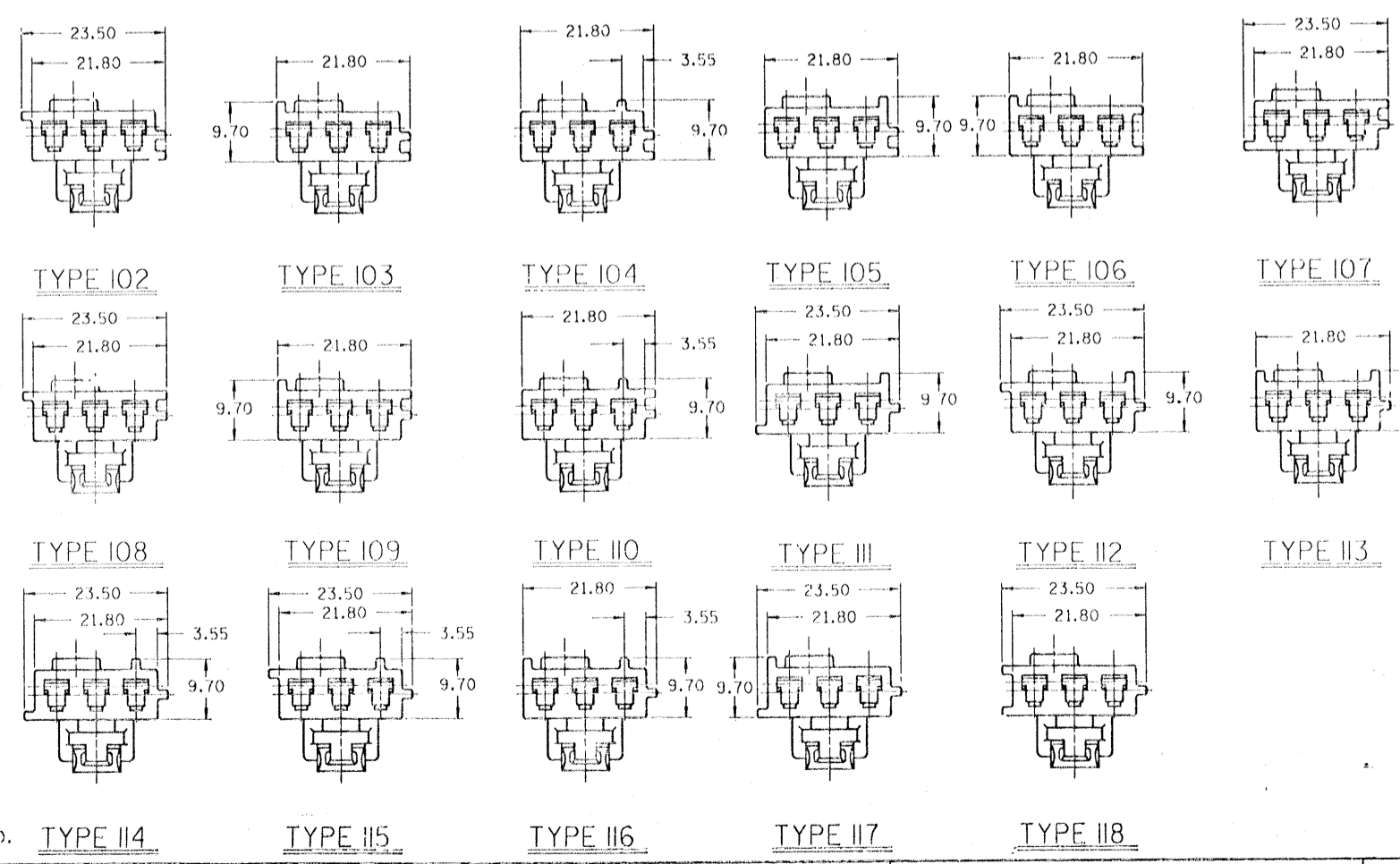
TYPES 102 THRU 118 ARE IDENTICAL TO TYPE 101 EXCEPT AS SHOWN



LETTERING FOR TYPES 102, 104, 106, 108, 110 & 112-118



- NOTES**
1. CAVITIES TO ACCEPT 12015857 TERMINAL OR EQUIVALENT.
  2. MAX INSULATION CRIMP MUST BE LESS THAN 4.00 HIGH AND 5.55 WIDE.
  3. CONNECTOR TO ACCEPT 12077913 SECONDARY TERMINAL LOCK OR EQUIVALENT.
  4. CONNECTOR TO ACCEPT 12052834 C.P.A. LOCK OR EQUIVALENT.
  5. SEALING CODE 0.
  6. DIMENSIONS MARKED "REF" ARE FOR REFERENCE ONLY, AND NO TOLERANCE LIMITS ARE ESTABLISHED.



**GENERAL NOTE**  
 "O" DENOTES DIMENSIONS AND CHARACTERISTICS THAT ARE IMPORTANT TO THE FUNCTION AND/OR PROCESSING OF THE PART. IF DOES NOT NECESSARILY INDICATE AN SPC DIMENSION, THIS DRAWING HAS 9 SNOWGONES.

TYPES 102 THRU 118 ARE IDENTICAL TO TYPE 101 EXCEPT AS SHOWN

| PART NO. | REV. | STATUS   | TYPE | MAT'L SPEC. & COLOR | MATING CONN. | APPLICATION      | LETTERS |
|----------|------|----------|------|---------------------|--------------|------------------|---------|
| 12084763 | G    | OBsolete | 118  | NYLON 66 - YELLOW   | 12084762     | PASSENGER SENSOR | D-E-F   |
| 12084760 | G    | OBsolete | 117  | NYLON 66 - YELLOW   | 12084759     | PASSENGER SENSOR | D-E-F   |
| 12084757 | G    | OBsolete | 116  | NYLON 66 - YELLOW   | 12084756     | PASSENGER SENSOR | D-E-F   |
| 12084754 | G    | OBsolete | 115  | NYLON 66 - YELLOW   | 12084753     | PASSENGER SENSOR | D-E-F   |
| 12084751 | G    | OBsolete | 114  | NYLON 66 - YELLOW   | 12084750     | PASSENGER SENSOR | D-E-F   |
| 12084748 | G    | OBsolete | 113  | NYLON 66 - YELLOW   | 12084747     | PASSENGER SENSOR | D-E-F   |
| 12084745 | G    | OBsolete | 112  | NYLON 66 - YELLOW   | 12084744     | PASSENGER SENSOR | D-E-F   |
| 12084742 | G    | OBsolete | 111  | NYLON 66 - YELLOW   | 12084741     | ARMING SENSOR    | A-B-C   |
| 12084739 | G    | OBsolete | 110  | NYLON 66 - YELLOW   | 12084738     | PASSENGER SENSOR | D-E-F   |
| 12084736 | G    | OBsolete | 109  | NYLON 66 - YELLOW   | 12084735     | ARMING SENSOR    | A-B-C   |
| 12084336 | G    | OBsolete | 108  | NYLON 66 - YELLOW   | 12084330     | PASSENGER SENSOR | D-E-F   |
| 12084335 | G    | OBsolete | 107  | NYLON 66 - YELLOW   | 12084329     | ARMING SENSOR    | A-B-C   |
| 12084334 | G    | OBsolete | 106  | NYLON 66 - YELLOW   | 12084328     | PASSENGER SENSOR | D-E-F   |
| 12084333 | G    | OBsolete | 105  | NYLON 66 - YELLOW   | 12084327     | ARMING SENSOR    | A-B-C   |
| 12084332 | G    | OBsolete | 104  | NYLON 66 - YELLOW   | 12084326     | PASSENGER SENSOR | D-E-F   |
| 12084331 | G    | OBsolete | 103  | NYLON 66 - YELLOW   | 12084325     | ARMING SENSOR    | A-B-C   |
| 12077912 | G    | OBsolete | 102  | NYLON 66 - YELLOW   | 12077910     | PASSENGER SENSOR | D-E-F   |
| 12077911 | G    | OBsolete | 101  | NYLON 66 - YELLOW   | 12077909     | ARMING SENSOR    | A-B-C   |

| DATE     | BY | REVISION   | REASON                                   | APPROVED | CHK     |
|----------|----|--|--|----------|---------|
| 090889   |    | ALL PARTS  | REVISION FROM SEPARATE "C" SIZE DRAWINGS |          |         |
|          |    | ADD MATING INFORMATION                                   |  |          |         |
|          |    | ALL PARTS EXCEPT 12084364                                |  |          |         |
|          |    | REVISED GRAPHICS REV LEVELS                              |  |          |         |
|          |    | REMAIN AS IS   |  |          |         |
| 01/08/89 |    | TYPE 102   | REVISED INDEX FEATURES                   | 12/27/87 | 0MS/DKS |
|          |    | NO NEW UPDATE REQ'D                                      |  | 1/26/81  | 000/BPM |
| 08/1/82  |    | 12077911 & 1912, 12084742, 4745, 4754, 4757, 4760 & 4763 |  |          |         |
|          |    | OBsolete   |  |          |         |
| 08/1/82  |    | 12084745   | REINSTATED TO NEW "F"                    |          |         |
|          |    | OBsolete   |  |          |         |
| 2/29/81  |    | ALL PARTS  | REVISION LEVELS                          |          |         |
|          |    | ADVANCED   |  | 1/19/82  | GC/CC   |

1208 4365

1208 4365

**METRIC**  
 DIMENSIONS ARE IN MILLIMETERS UNLESS OTHERWISE SPECIFIED.

6901

DATE: 31JUL87

DR: WESLEY CHIN

DATE: 13OCT89

12084365 "E" SIZE

DATE: 13OCT89

CONN 3F M/P 280

**1208 4365**  
 OUTLINE DRAWING