

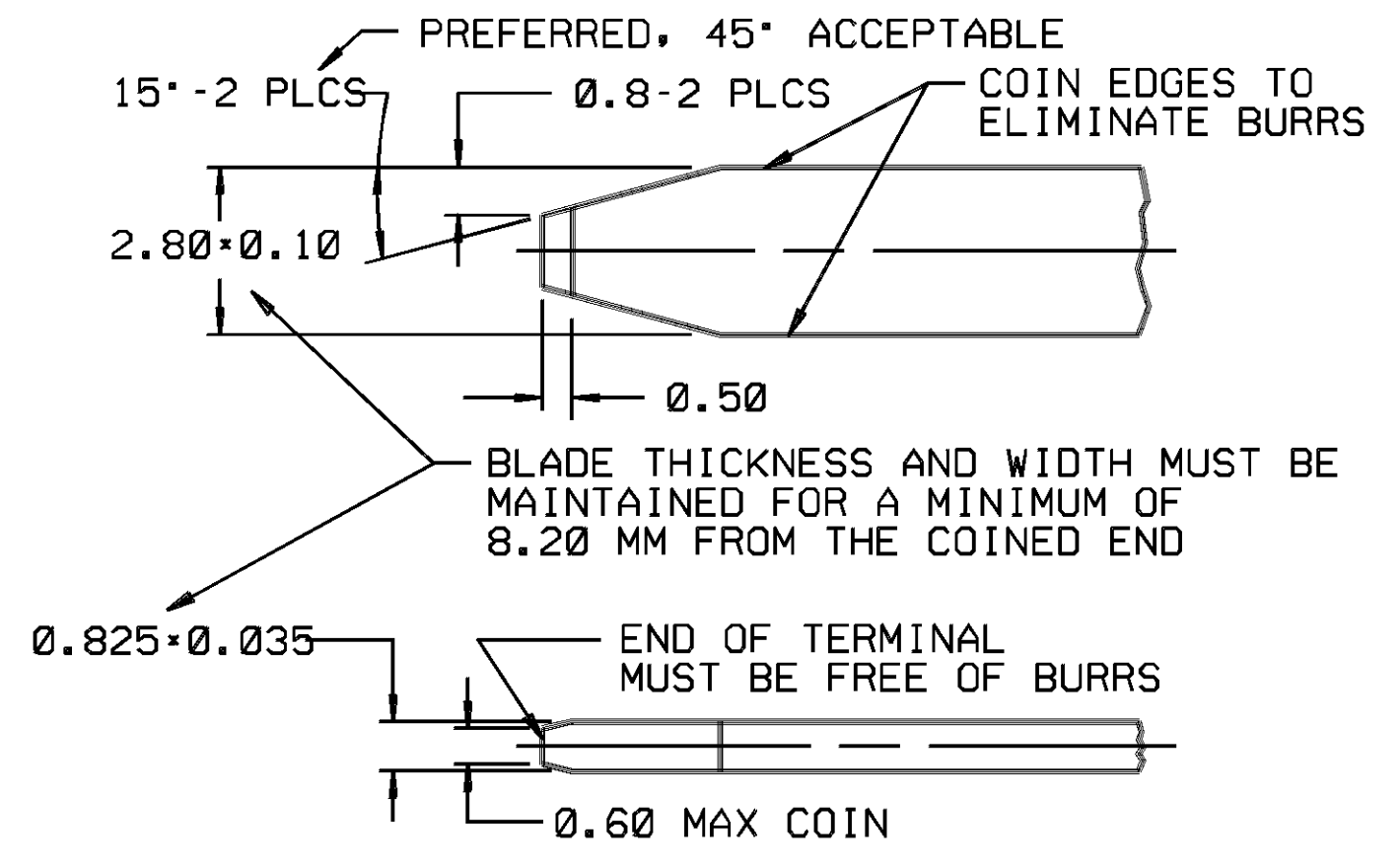
THIS DRAWING AND DESIGN HEREON CONSTITUTES A PROPRIETARY DESIGN OF PACKARD ELECTRIC DIVISION AND IS NOT TO BE DUPLICATED OR REPRODUCED WITHOUT AUTHORITY OF PACKARD ELECTRIC DIVISION.

DO NOT SCALE

PART NO. 1209 2159

PART NO. 1209 2159

DATE	SYM	REVISION RECORD	AUTHORITY	DR	CK
07SE88	A	DRAWING COMPLETED		TH	
23NO88		WAS PE014926 & RELEASED	880005	DS	FH
01MR90	A2	REVISED KNOCKOUT PAD &			
		REVISED GRAPHICS	133126	BAR	BAR
24MR92	B	ADVANCED REV. LEVEL	147811	WHP	WHP
05AU92	C	REVISED GRAPHICS	150139	WHP	WHP



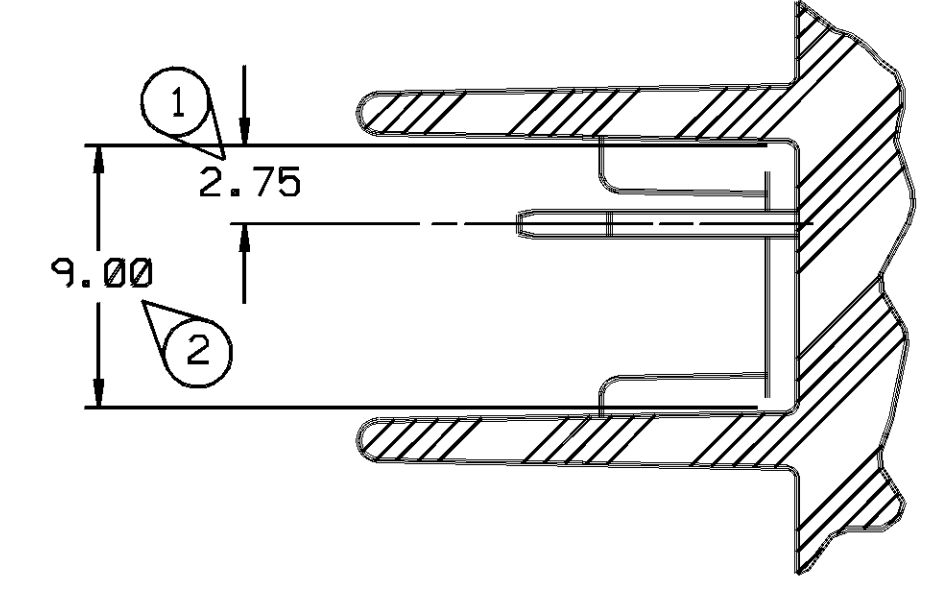
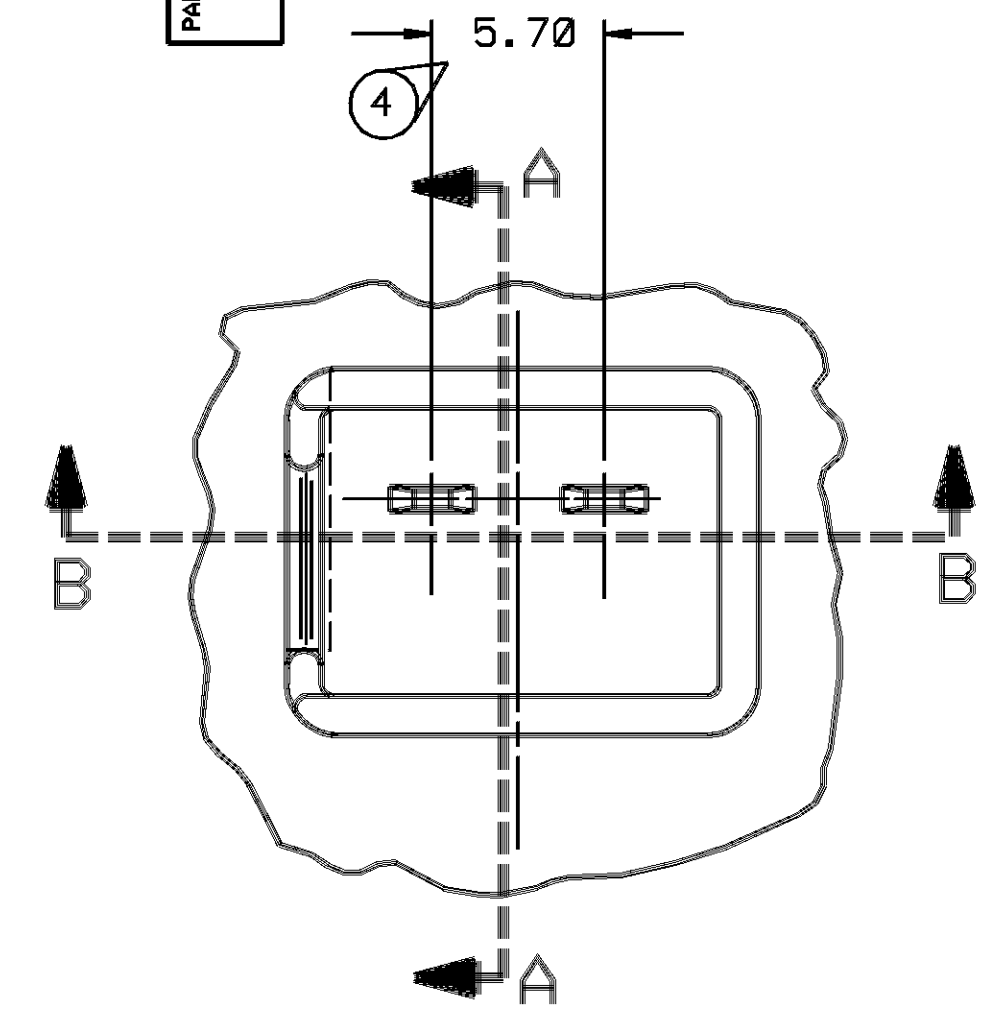
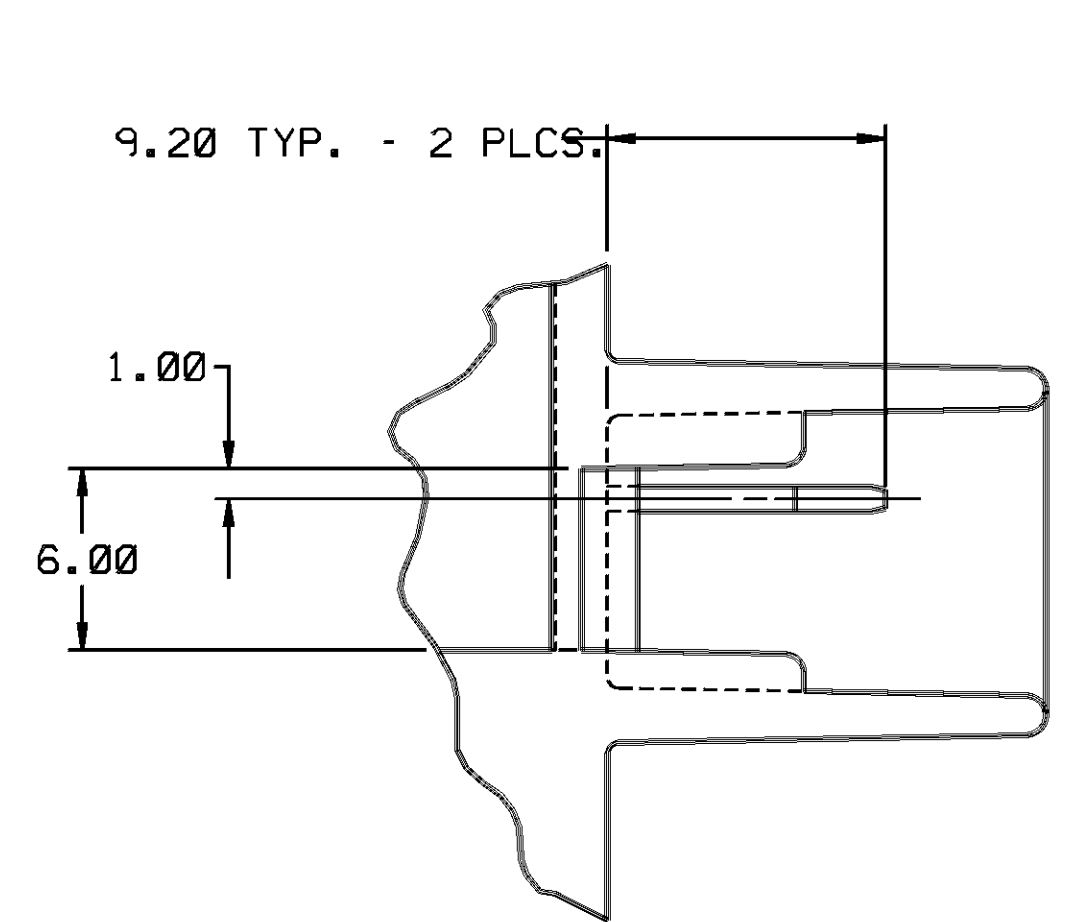
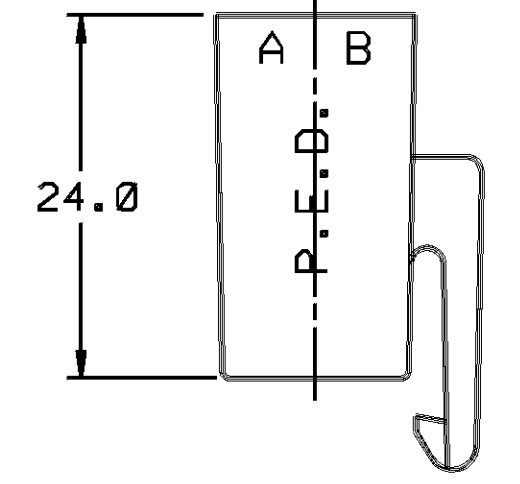
MATERIAL SPECIFICATIONS

RECOMMENDED
 BASE METAL - CDA-210, GILDING, EXTRA SPRING TEMPER
 PLATING - 0.0050 ± 0.0025 MM THICK TIN

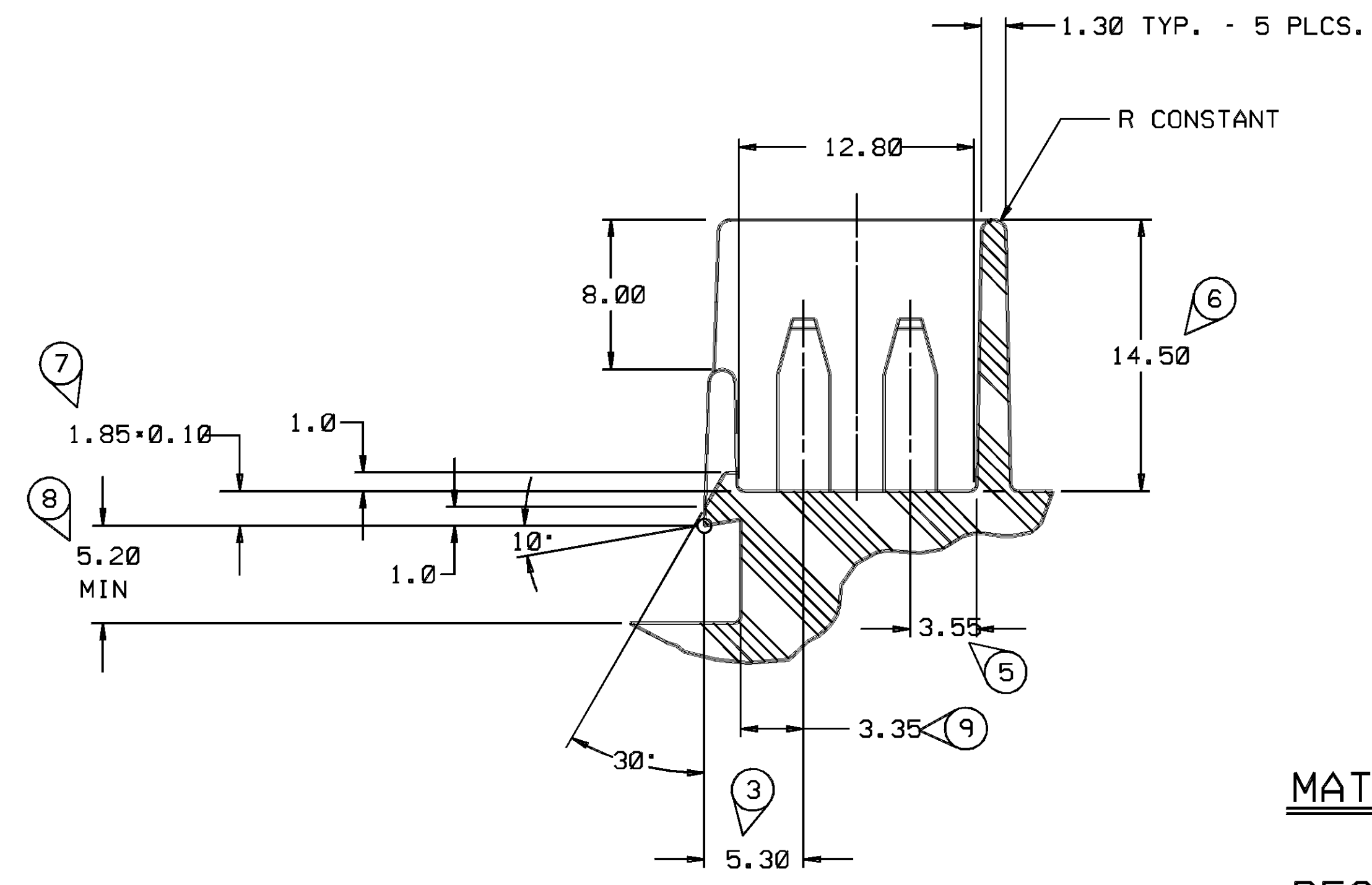
MINIMUMS
 ELECTRICAL CONDUCTIVITY - > 20% IACS @ 20°C. USE OF A MATERIAL WITH CONDUCTIVITY < 20% IACS MUST BE APPROVED BY PACKARD ELECTRIC MATERIALS ENGINEERING.
 TENSILE STRENGTH - 407 MPA
 PLATING - FOR LOW ENERGY (< 5V) AND NON-PASSENGER COMPARTMENT POWER CIRCUITS, 0.0050 ± 0.0025 MM THICK TIN. FOR MATERIALS CONTAINING 10% OR MORE ZINC, AN UNDERPLATE OF COPPER 0.0050 ± 0.0025 MM THICK IS REQUIRED.

MATING BLADE INFORMATION

SCALE 8:1



SECTION A-A



SECTION B-B

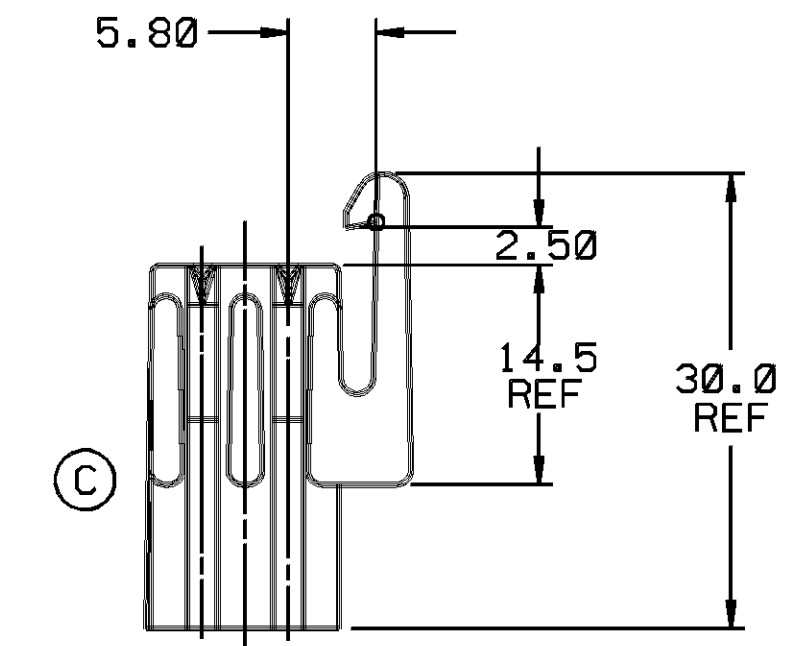
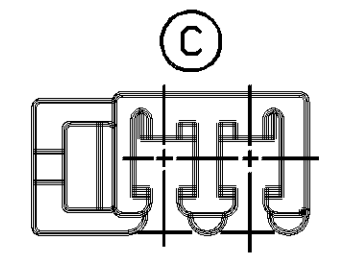
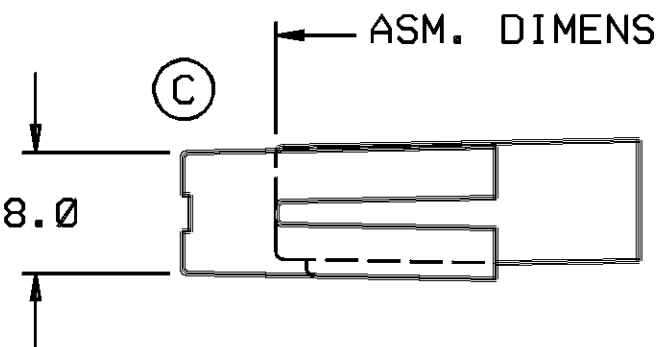
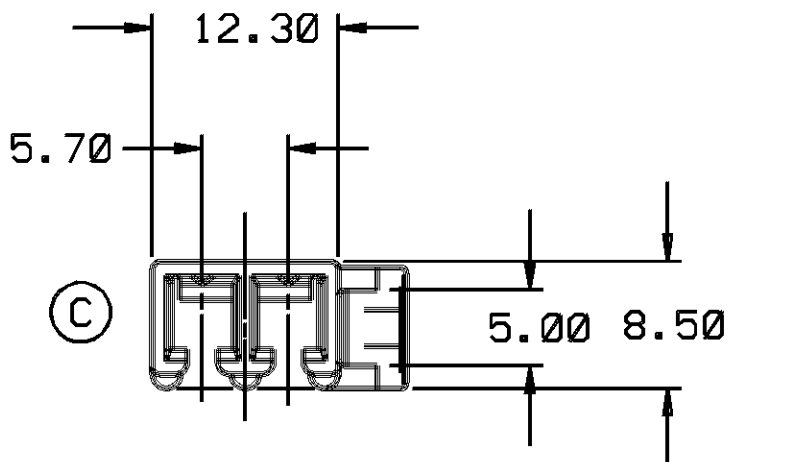
- NOTES**
- ALL RADII 0.40 UNLESS OTHERWISE SPECIFIED.
 - DIMENSIONS ARE TO THE FACE OF VIEW SHOWN, UNLESS OTHERWISE INDICATED.
 - 1° DRAFT ON ALL INSIDE AND OUTSIDE SURFACES, UNLESS OTHERWISE SPECIFIED.
 - SEALING CODE "0". (UNSEALED).
 - "O" DENOTES DIMENSIONS AND CHARACTERISTICS THAT ARE IMPORTANT TO THE FUNCTION AND/OR PROCESSING OF THE PART. IT DOES NOT NECESSARILY INDICATE AN SPC DIMENSION. THIS DRAWING HAS 9 SNOWCONES.

MATING CONNECTOR INFORMATION

SCALE 4:1

RECOMMENDED SHROUD MATERIAL

NYLON 66 OR EQUIVALENT



- NOTES**
- CAVITIES TO ACCEPT TERMINAL 12010624 OR EQUIVALENT.
 - MATING DEVICE - DELCO REMY - PWM SOLENOID OR EQUIVALENT.
 - SEALING CODE 0.

PACKARD ELECTRIC MICROSTATION		FILE SPEC: ***USER*** DGN#SPECIFICATION***** *****SYTIME*****
THIRD ANGLE PROJECTION		METRIC DIMENSIONS ARE IN MILLIMETERS UNLESS OTHERWISE SPECIFIED.
CODE NO. 6900	TOLERANCE UNLESS OTHERWISE SPECIFIED: DECIMAL: ONE PLACE ± 0.3 TWO PLACE ± 0.15 ANGULAR ± 2°	
DWG. DATE: 07SE88	SCALE: NONE	DR. T. HALL 07SE88
EST. NO.	CK. F. HESTON	DATE: 30NO88
REFERENCE NO. SDR166	APPR. D. KEILHOLZ	DATE: 01DE88
12092159 D* SIZE	APPR. T. E. GENT	DATE: 01DE88
MATERIAL SPEC. NYLON 66 HEAT STABILIZED-BLACK		
NAME: CONN 2F M/P 280 P2S		
PART NO. 1209 2159	SIZE D	
OUTLINE DRAWING		

PACKARD ELECTRIC DIVISION
GENERAL MOTORS CORPORATION
WARREN, OHIO

197-A

A

PACKARD ELECTRIC DIVISION
GENERAL MOTORS CORPORATION
WARREN, OHIO

A