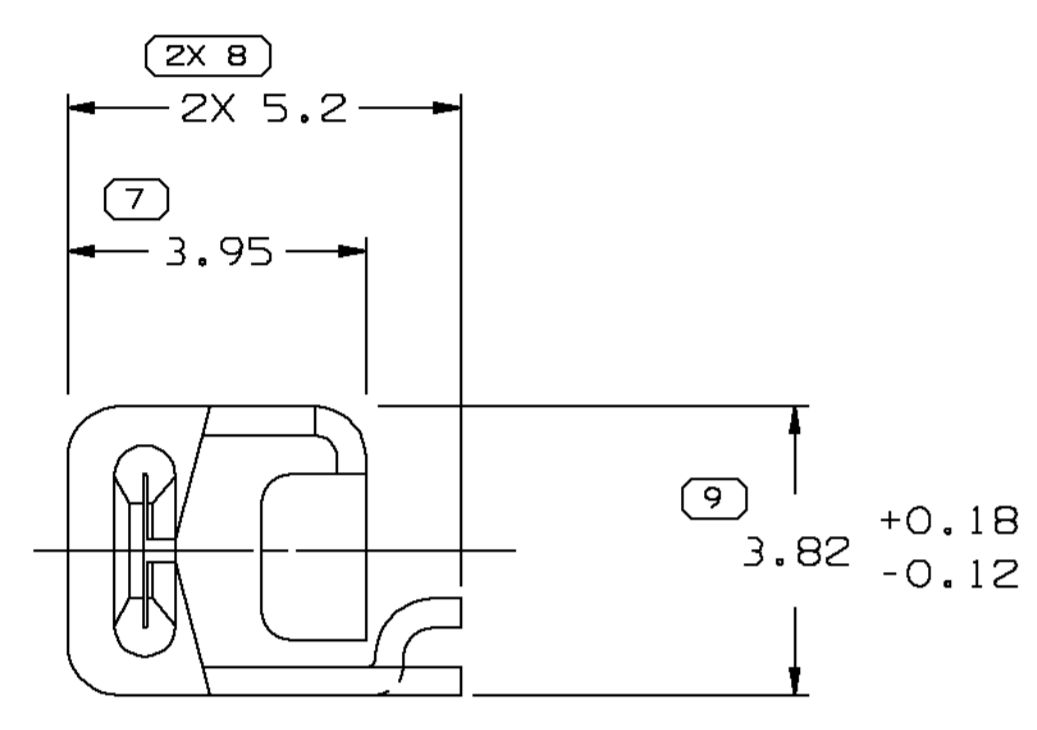
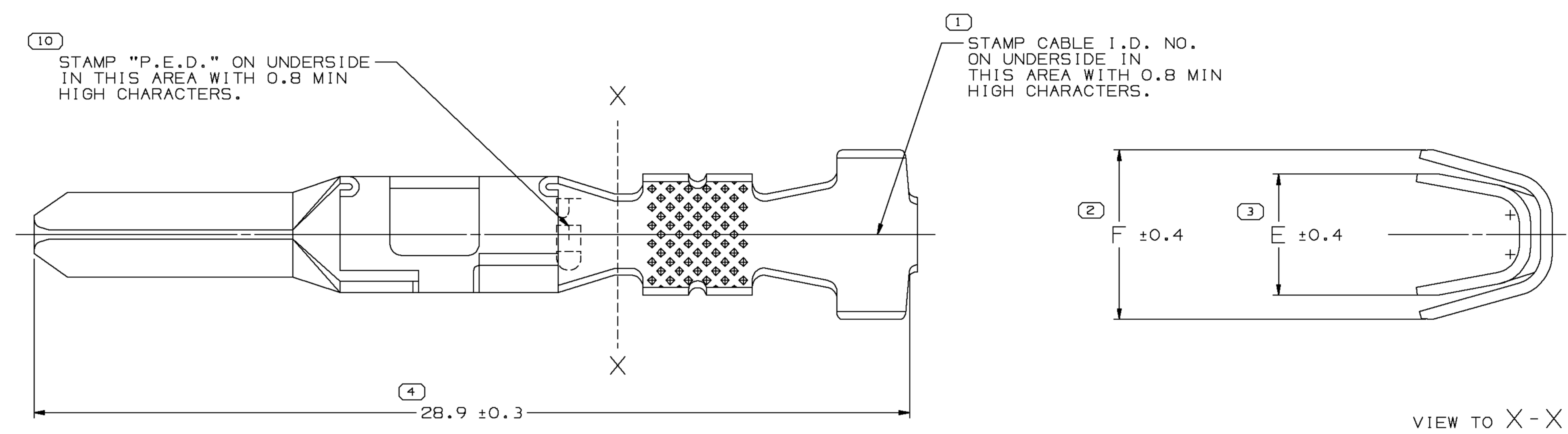


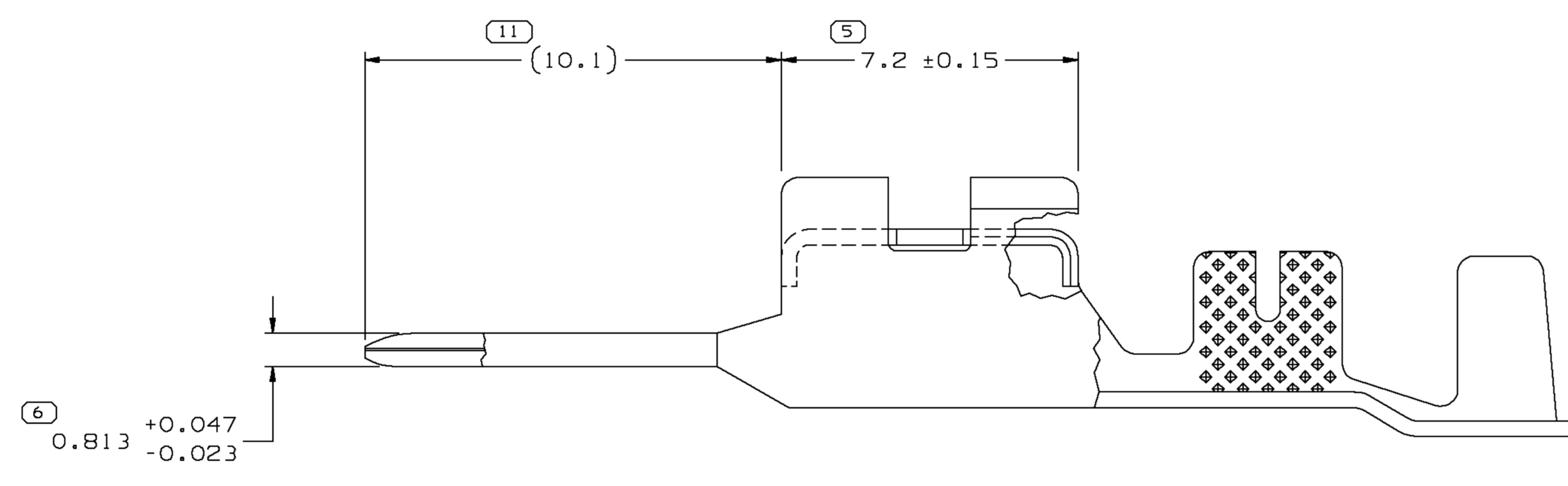
TYPE 102
SAME AS TYPE 101
EXCEPT AS SHOWN



VIEW TO X-X



TYPE 101



NOTES

- UNLESS OTHERWISE SPECIFIED AND/OR INDICATED: DIMENSIONS ARE TO FACE OF VIEW SHOWN AND AUTOMATICALLY ROUNDED BY COMPUTER FOR INSPECTION (SEE MATH MODEL FOR PRECISE DIMENSIONS). FOR ALL OTHER DIMENSIONS NOT SHOWN BUT REQUIRED FOR TOOL BUILD, SEE MATH MODEL FOR PRECISE TOOL PATH DATA.
- MATING TERMINAL 12084995 OR EQUIVALENT.
- * DENOTES DIMENSIONS MADE AT CUT-OFF AND CRIMP DIE.
- COIN ON INSULATION WING NOT REQUIRED WHEN MATERIAL THICKNESS IS 0.57 OR LESS.
- MAXIMUM CURRENT CAPACITY IS 25 AMPS.
- FOR SOLDERABILITY REQUIREMENTS SEE ESO-1503.

SYMBOL DEFINITION		MISSING SYMBOLS	
A DIMENSION WITHOUT AN INSPECTION REPORT SYMBOL DOES NOT REQUIRE INSPECTION. IT MAY BE CONTROLLED ON THE INDIVIDUAL COMPONENT DRAWING.	TOTAL NO OF INSPECTIONS REQUIRED	NO MISSING SYMBOL NUMBER	
	12		
	LAST NO. USED	11	

DWG STATUS				REVISION HISTORY				AUTH		DR		APVD	
DATE	STG	REV	N/P	CHG	ZONE								
16JNO3	R	01	-	-		REDRAWN TO PD1 ALL PARTS - UPDATED PDM ATTRIBUTES		241764	LOA	FKV	JMP		
14OCC03	R	02	-	-		12092347 - UPDATED PDM ATTRIBUTES		247376	AMG	AMG	JMP		
21OCC03	R	03	-	-		ALL PARTS - UPDATED ECL COLUMN OF CHART		247759	FKV	FKV	JMP		

PART NO	REV	N/P	STATUS	MAT'L SPEC	MAT'L SIZE	SIZE (MM ²)	CABLE	DIA	ID	TYPE	E _{10.4}	F _{10.4}
12092349	C2	-	-	M3607465 C42500 1/2 HD	0.381 X 36.14	TWO 0.35	1.69-1.47	222	102	2.7	5.2	
12092348	C2	-	-	M3607465 C42500 1/2 HD	0.381 X 36.14	TWO 0.5	2.19-1.69	220	102	3.5	5.8	
12092347	C3	-	-	M3607465 C42500 1/2 HD	0.381 X 36.14	TWO 1-0.5	2.42-1.96	217	101	4.2	6.7	
12092346	C2	-	-	M3607465 C42500 1/2 HD	0.381 X 36.14	0.5-0.35	2.19-1.47	21	102	2.4	3.8	
12092345	C2	-	-	M3607465 C42500 1/2 HD	0.381 X 36.14	1-0.8	2.64-1.96	17	102	2.8	4.4	
12092344	C2	-	-	M3607465 C42500 1/2 HD	0.381 X 36.14	3-2	3.65-2.5	13	101	4	5.6	

6 PROCESS SENSITIVE DIMENSION		REFERENCE
DIMENSIONS ENCLOSED IN () INDICATE REFERENCE DIMENSIONS AND NO TOLERANCE LIMITS ARE ESTABLISHED		
DIMENSIONAL RANGE (MM)	CHART 65	
FROM 0 TO 12	>12	
TOLERANCE UNLESS OTHERWISE SPECIFIED		
±0.1	±0.2	
ANGULAR TOLERANCE ±2°		

DWO TYPE PART DRAWING	
STYLE	
VOLUME (COP)	DISTR CODE
ROUTING	D
6900	
UNLESS OTHERWISE SPECIFIED	
THIS DOCUMENT IS IN ACCORDANCE WITH ASME Y14.5M-1994 AS AMENDED BY Y14.5M-2009 DIMENSIONING AND TOLERANCING ADDENDUM - 1997. ALL GEOMETRIC TOLERANCES AND RELATED CHAINS APPLY TO ALL DIMENSIONS UNLESS OTHERWISE SPECIFIED. DIMENSIONS ARE TO FACE UNLESS OTHERWISE SPECIFIED. DIMENSIONS ARE TO BE BASED SEPARATELY, REGARDLESS OF DATUM REFERENCE. ALL DIMENSIONS ARE IN MILLIMETERS.	
THIRD ANGLE PROJECTION	DO NOT SCALE
USE MATH DATA	UNGRAPHS

DELPHI
DELPHI PACKARD ELECTRIC SYSTEMS
WARREN, OH

DR	DATE
APVD1 T. NADASKY	01MRB9
APVD2 R. J. BLASKO	31MRB9
APVD3 R. PETROSKY	31MRB9
APVD4	
APVD5	

SUBSTANCES OF CONCERN AND RECYCLED CONTENT PER DELPHI 10949001

MATERIAL SEE CHART

DRAWING NAME
TAXI TERM ACT 280

DRAWING NUMBER
12092343

SIZE A0 SCALE 10:1 FRAME NO 1 SHEET NO 1 OF 1 STG REV N/P 03