

MATERIAL SPECIFICATIONS

RECOMMENDED
BASE METAL - CDA-210, GILDING, EXTRA SPRING TEMPER
PLATING - 0.0050-0.0025 MM THICK TIN

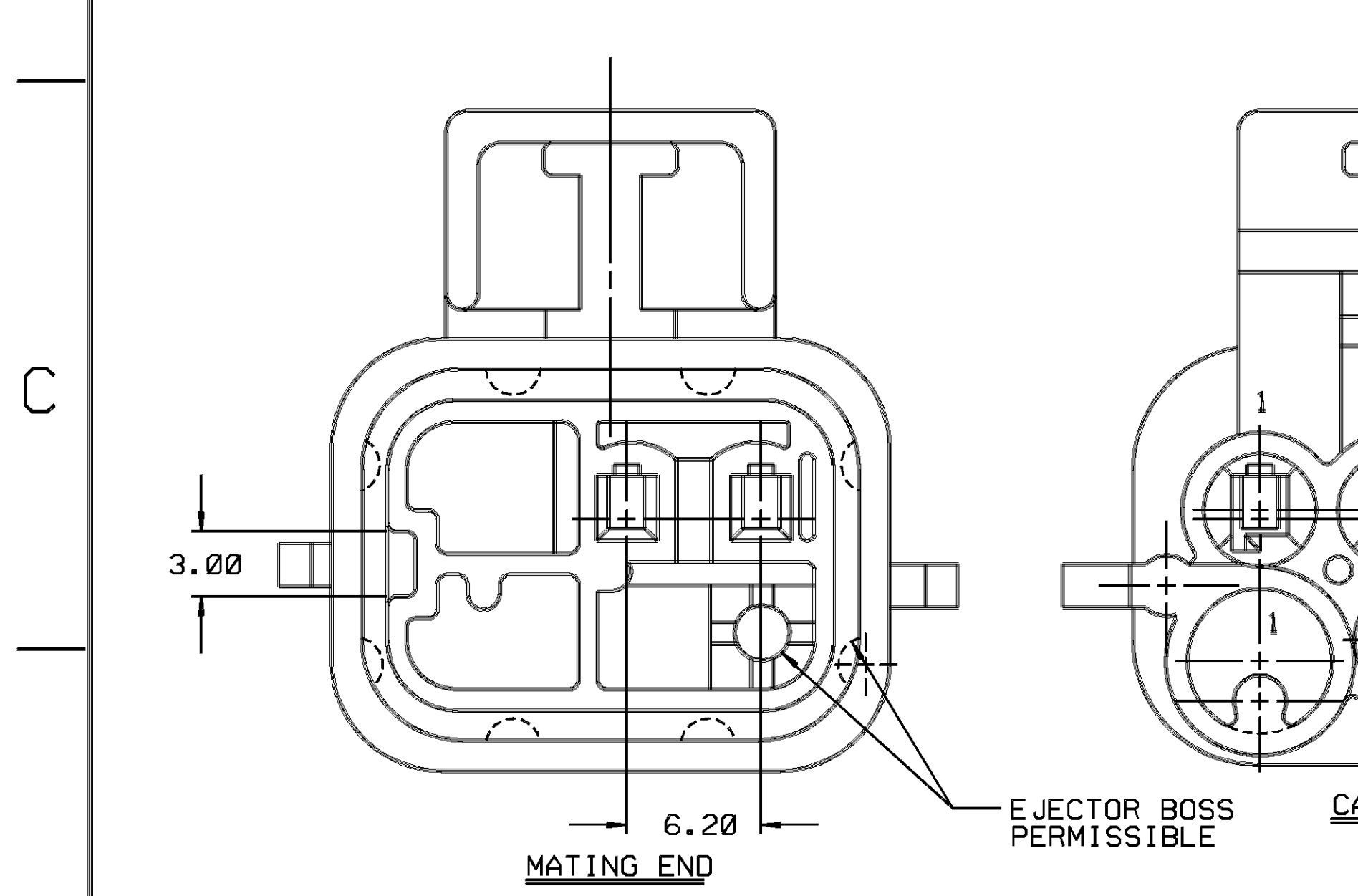
MINIMUMS
ELECTRICAL CONDUCTIVITY - > 20% IACS @ 20°C. USE OF A MATERIAL WITH CONDUCTIVITY < 20% IACS MUST BE APPROVED BY PACKARD ELECTRIC MATERIALS ENGINEERING.
TENSILE STRENGTH - 407 MPA
PLATING - FOR LOW ENERGY (< 5V) AND NON-PASSENGER COMPARTMENT POWER CIRCUITS, 0.0050-0.0025 MM THICK TIN. FOR MATERIALS CONTAINING 10% OR MORE ZINC, AN UNDERPLATE OF COPPER 0.0050-0.0025 MM THICK IS REQUIRED.

MATING BLADE INFORMATION



TERMINAL

A	B	C	D
---	---	---	---



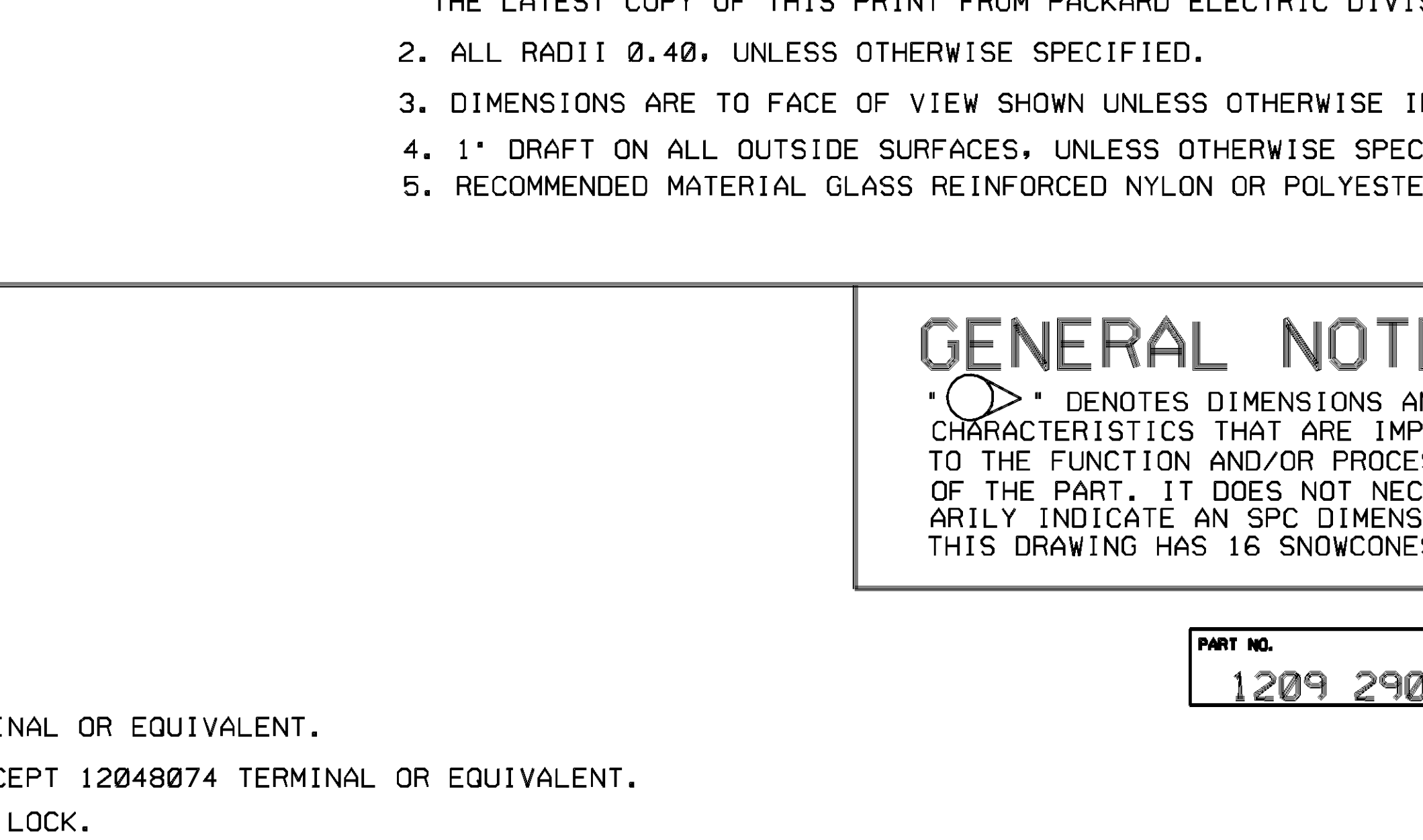
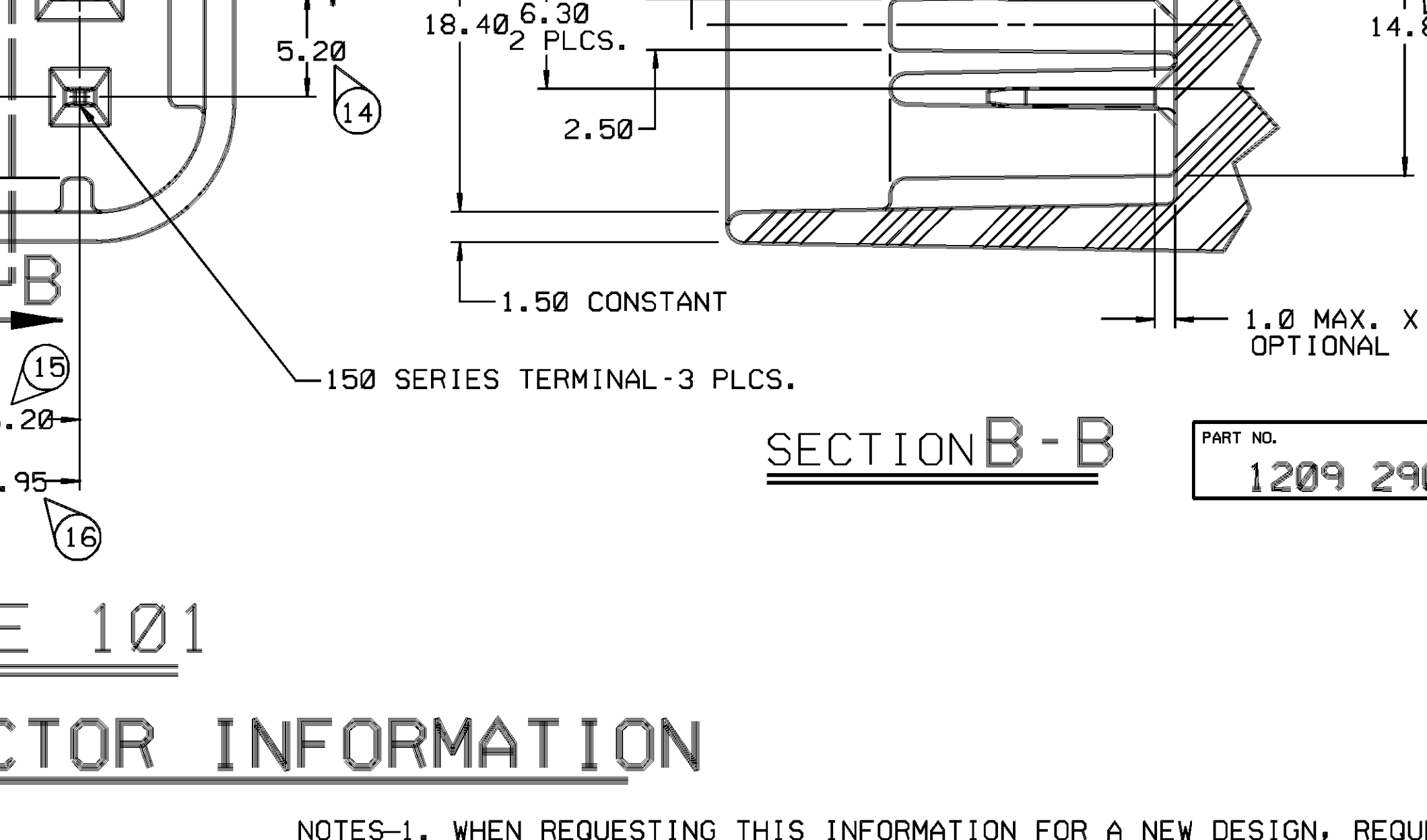
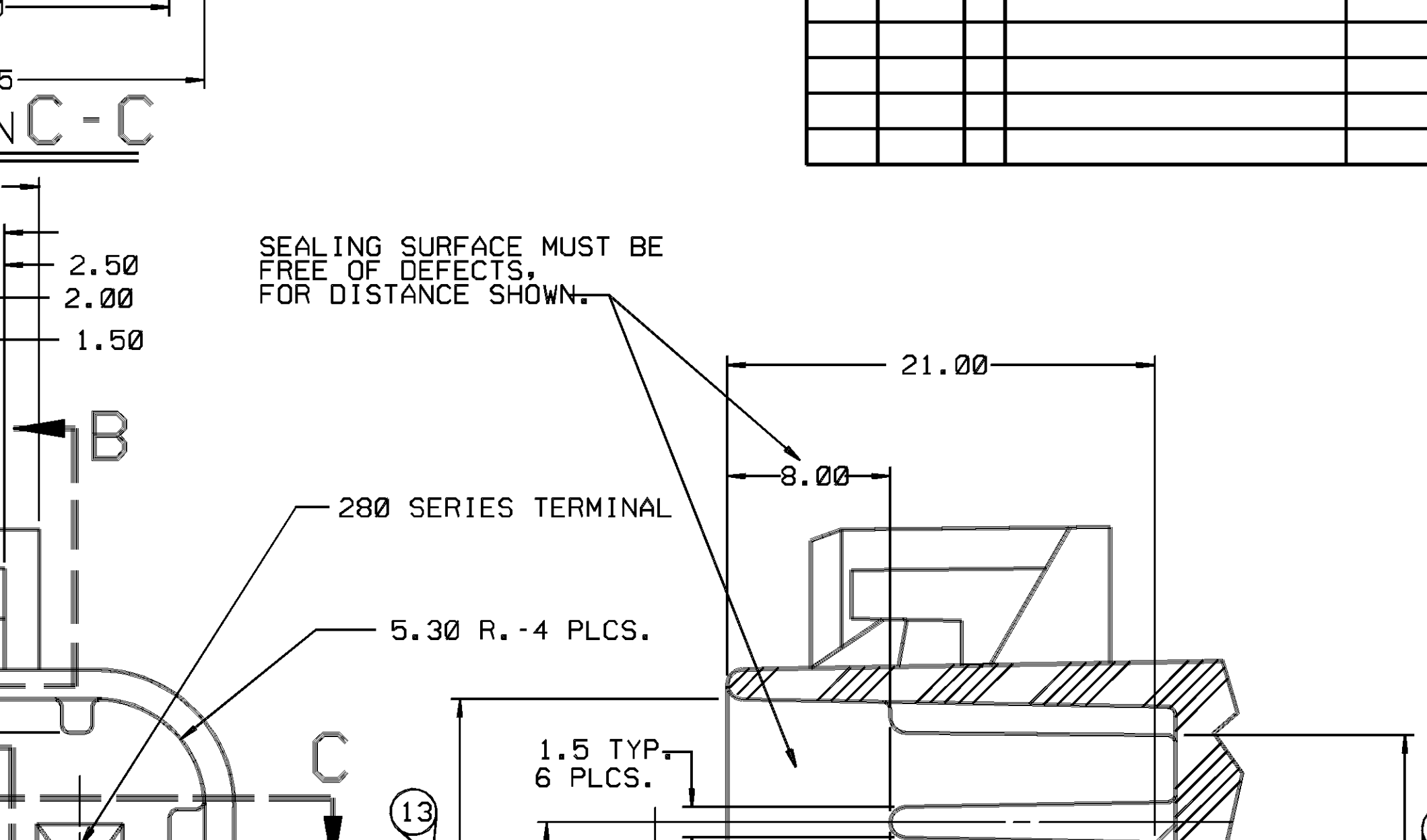
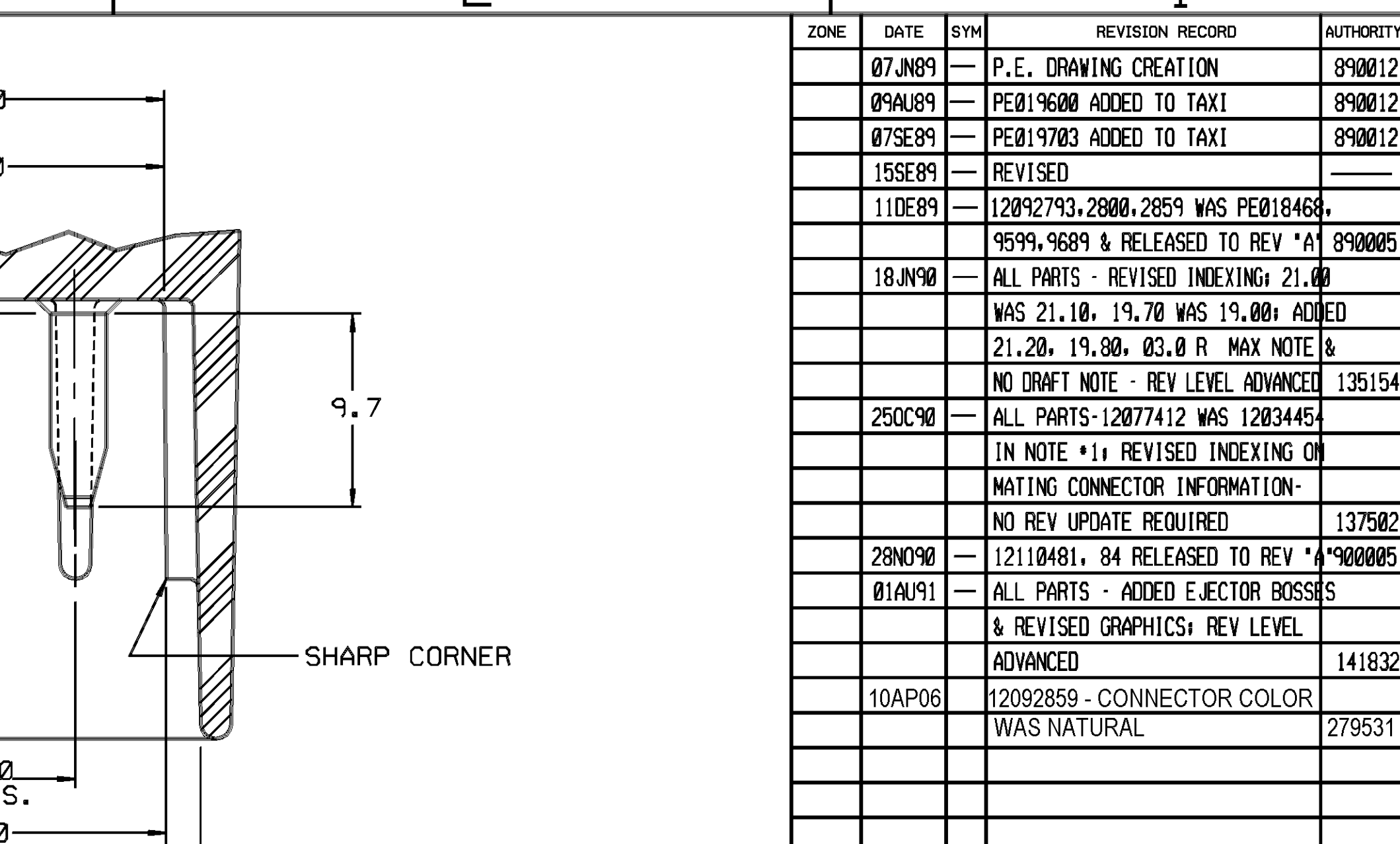
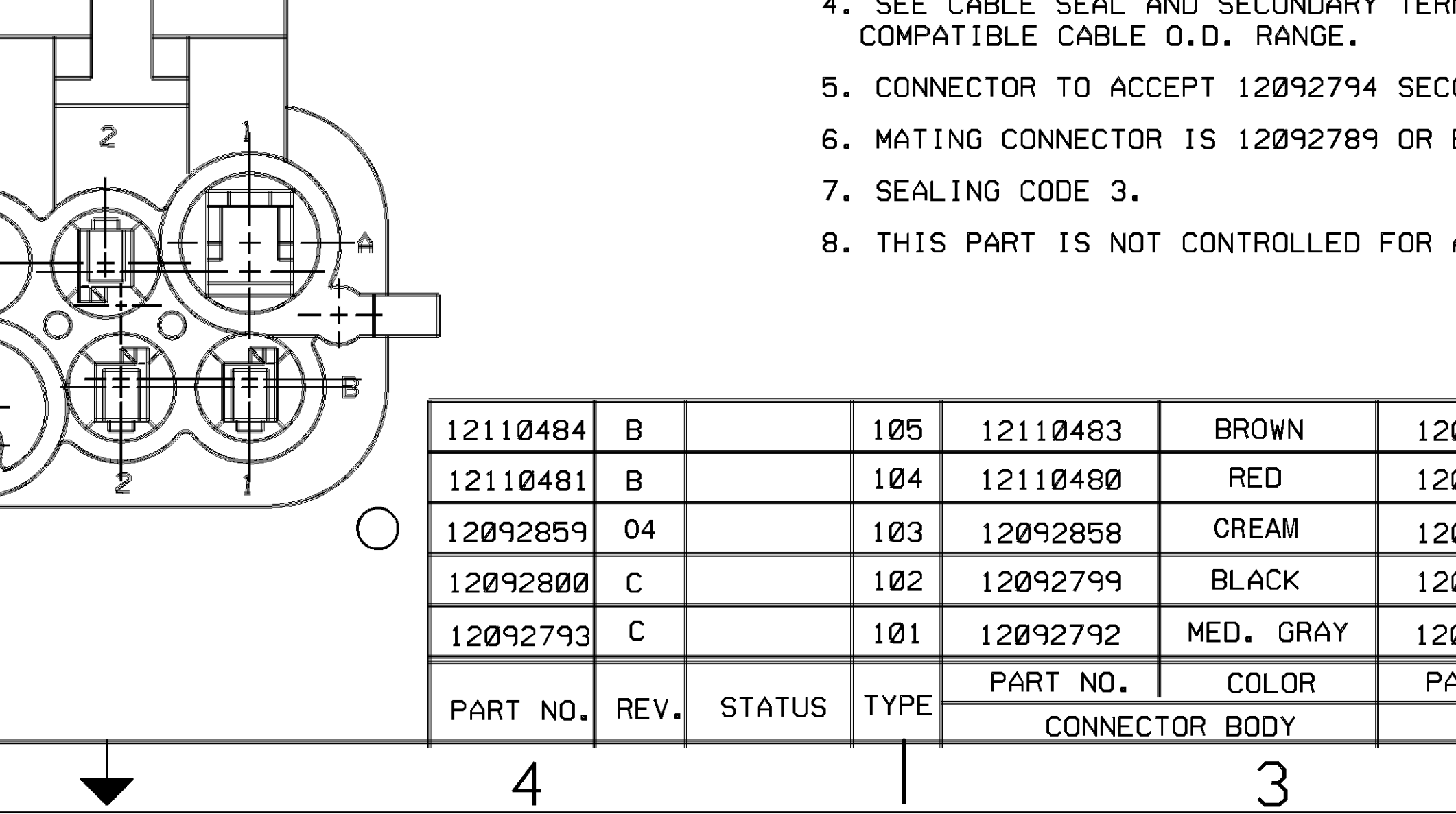
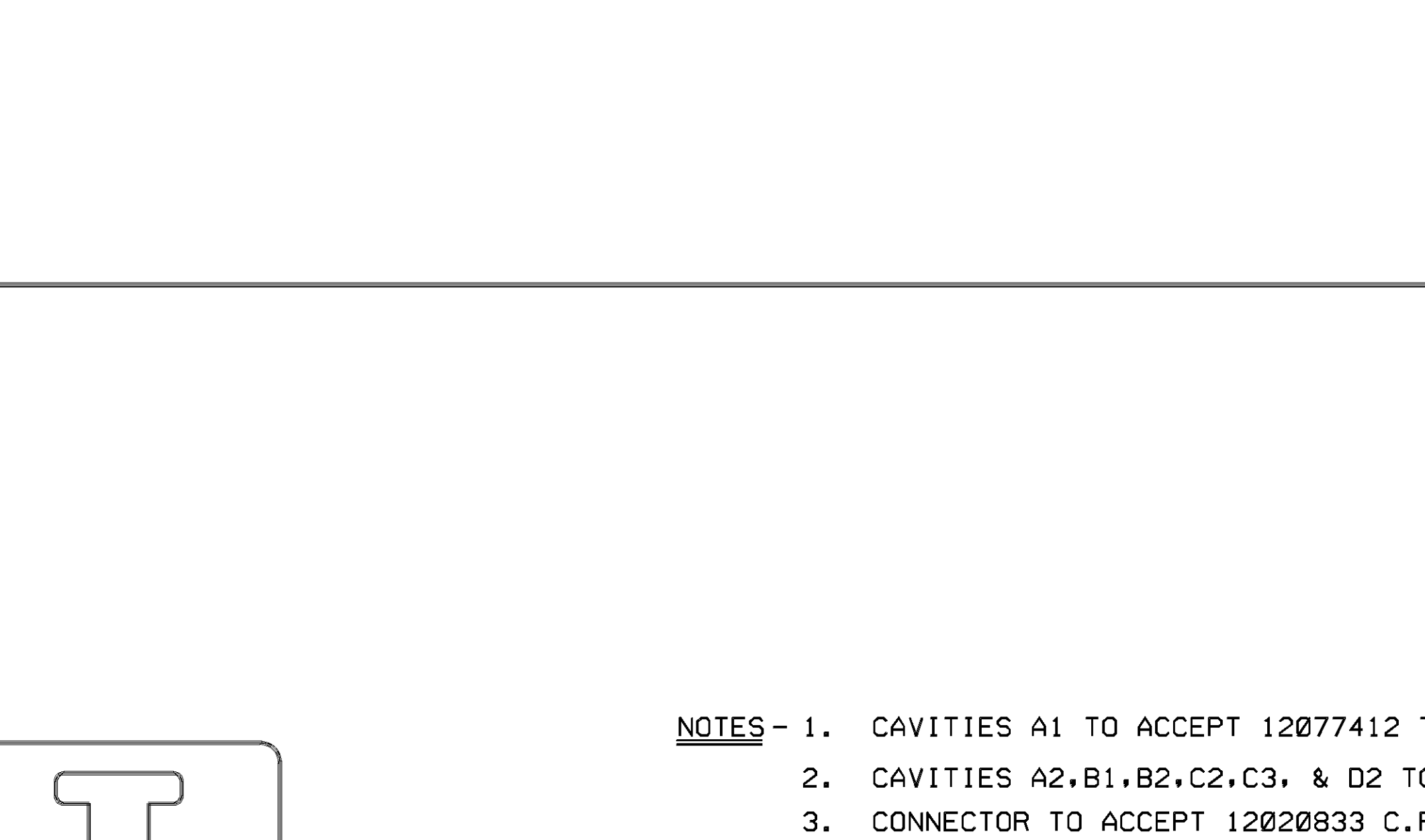
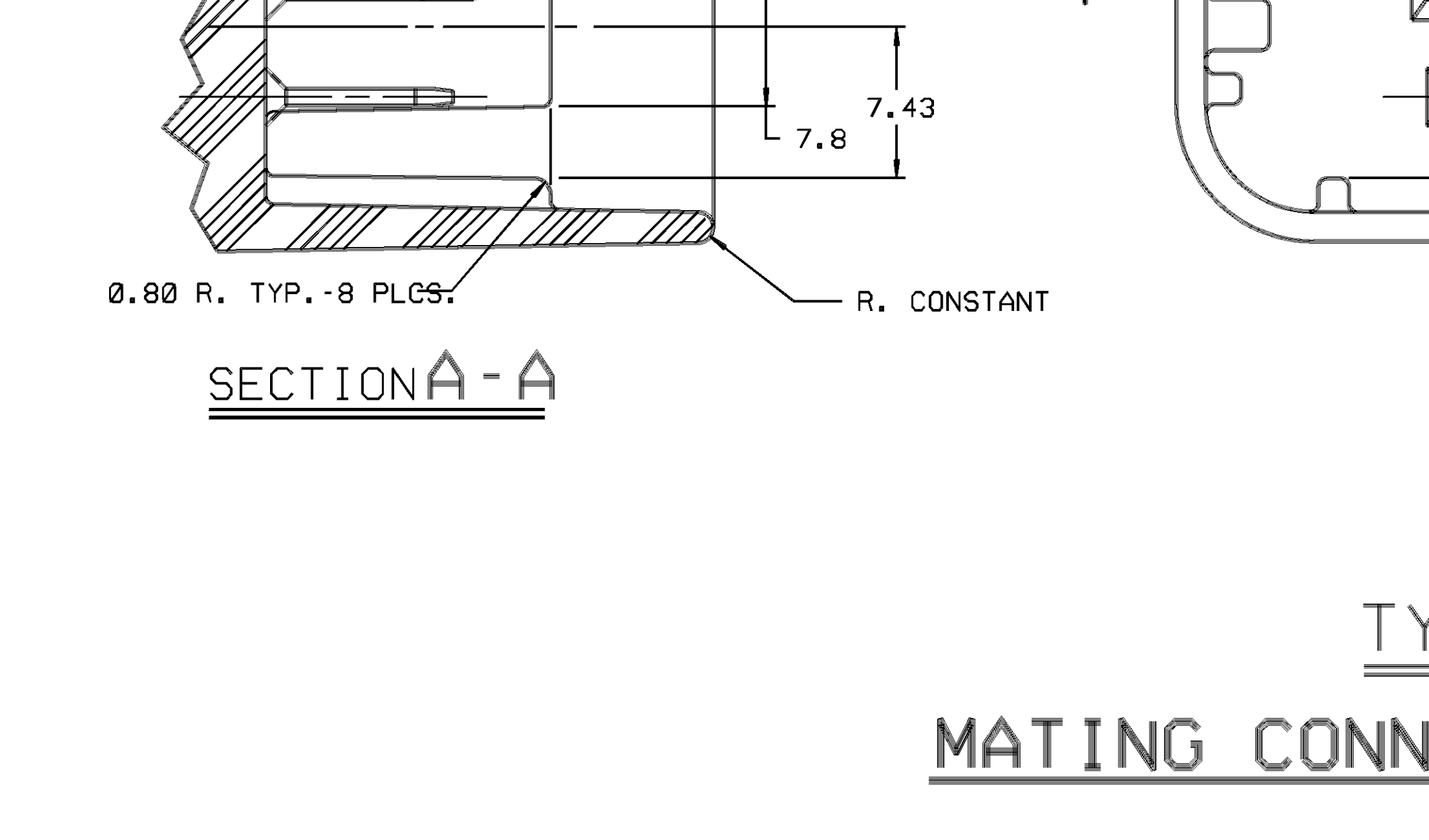
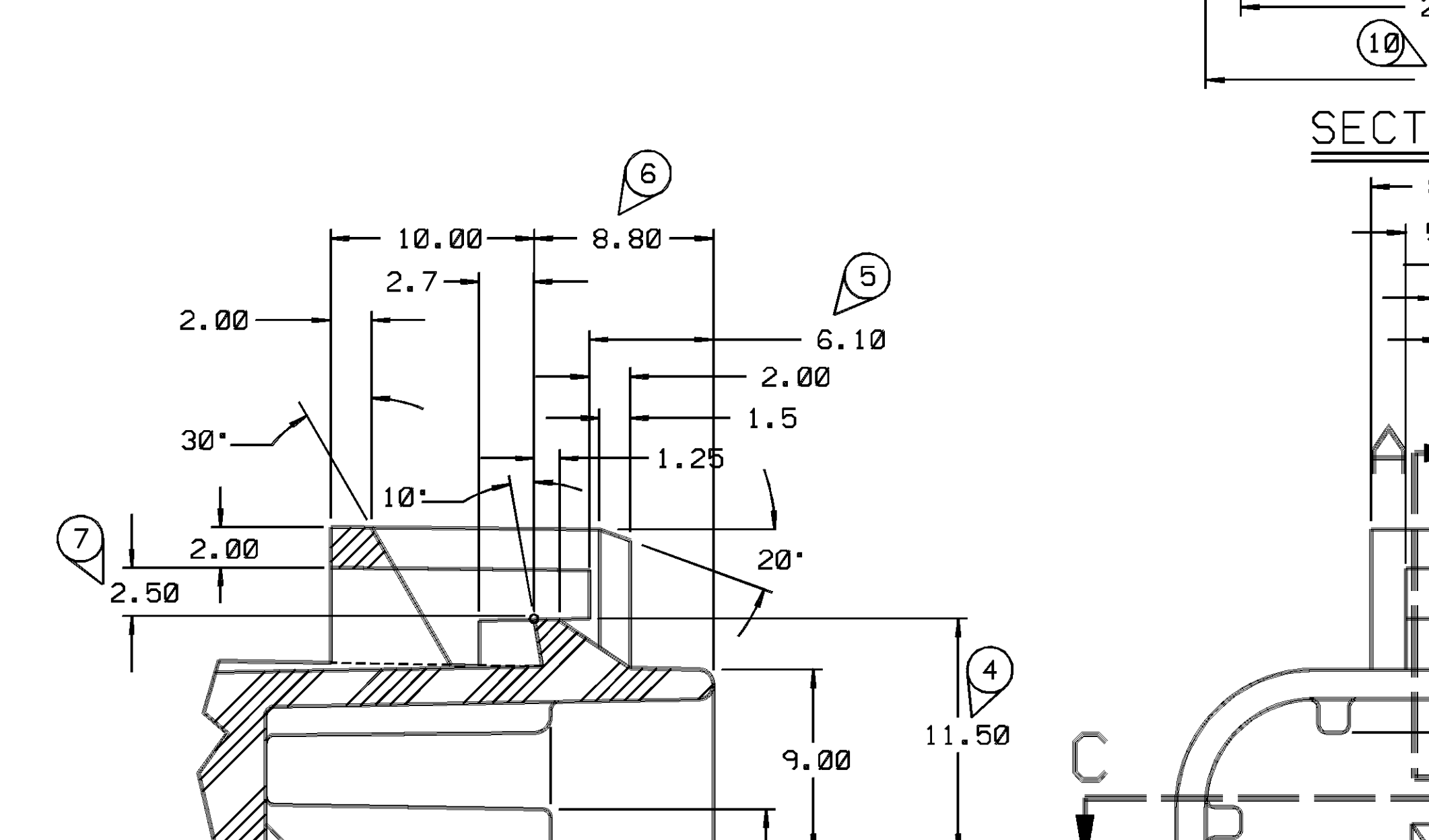
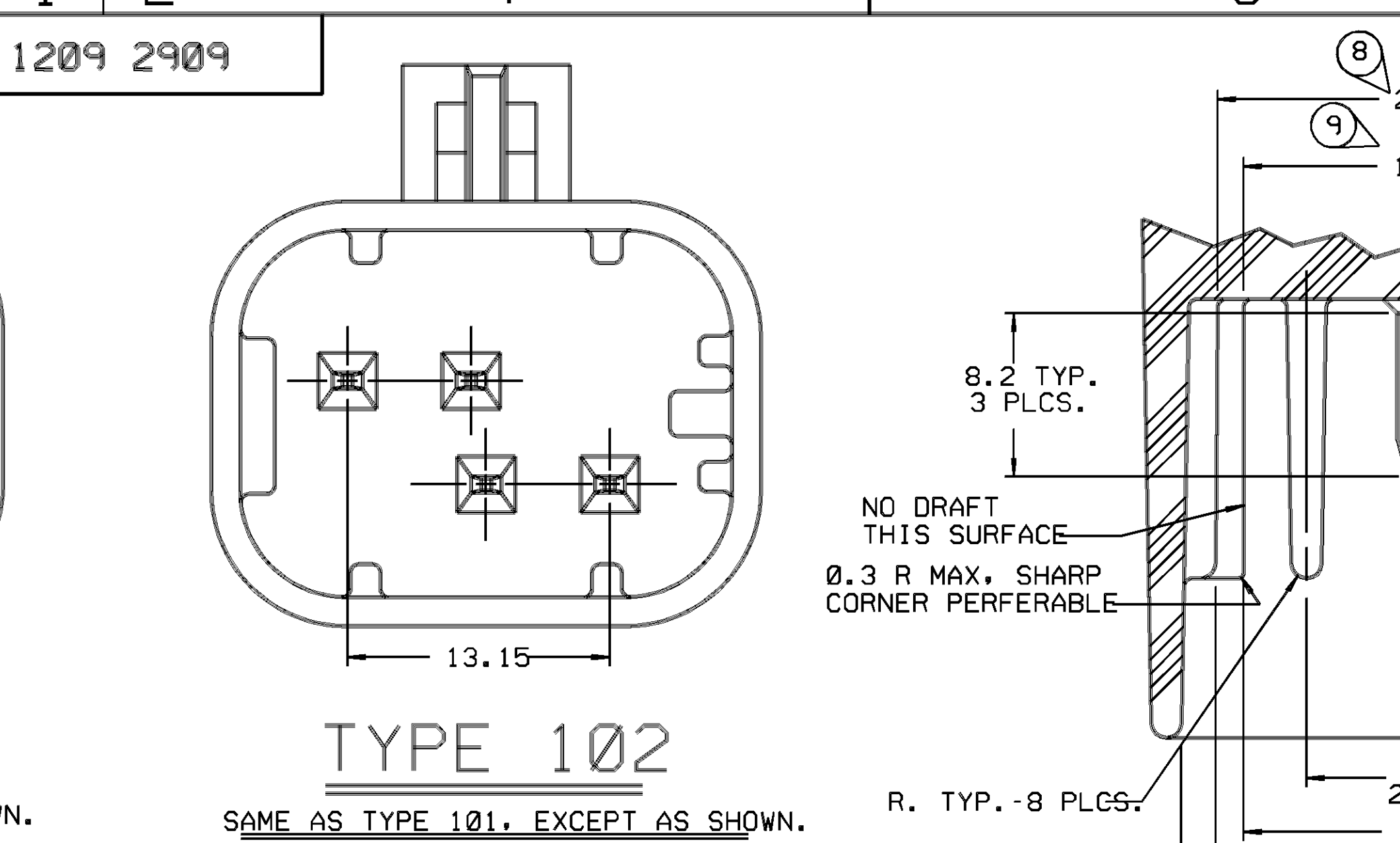
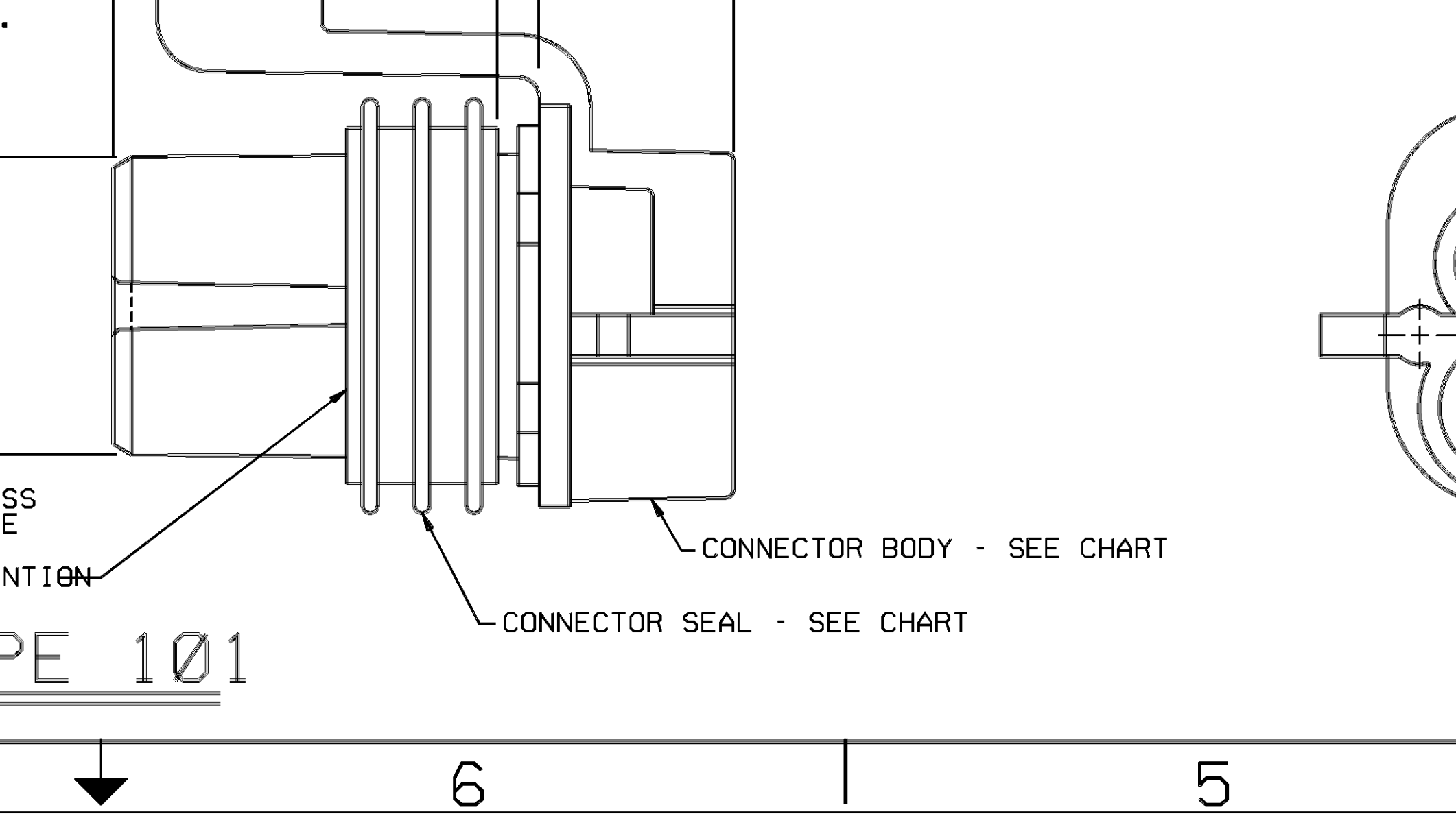
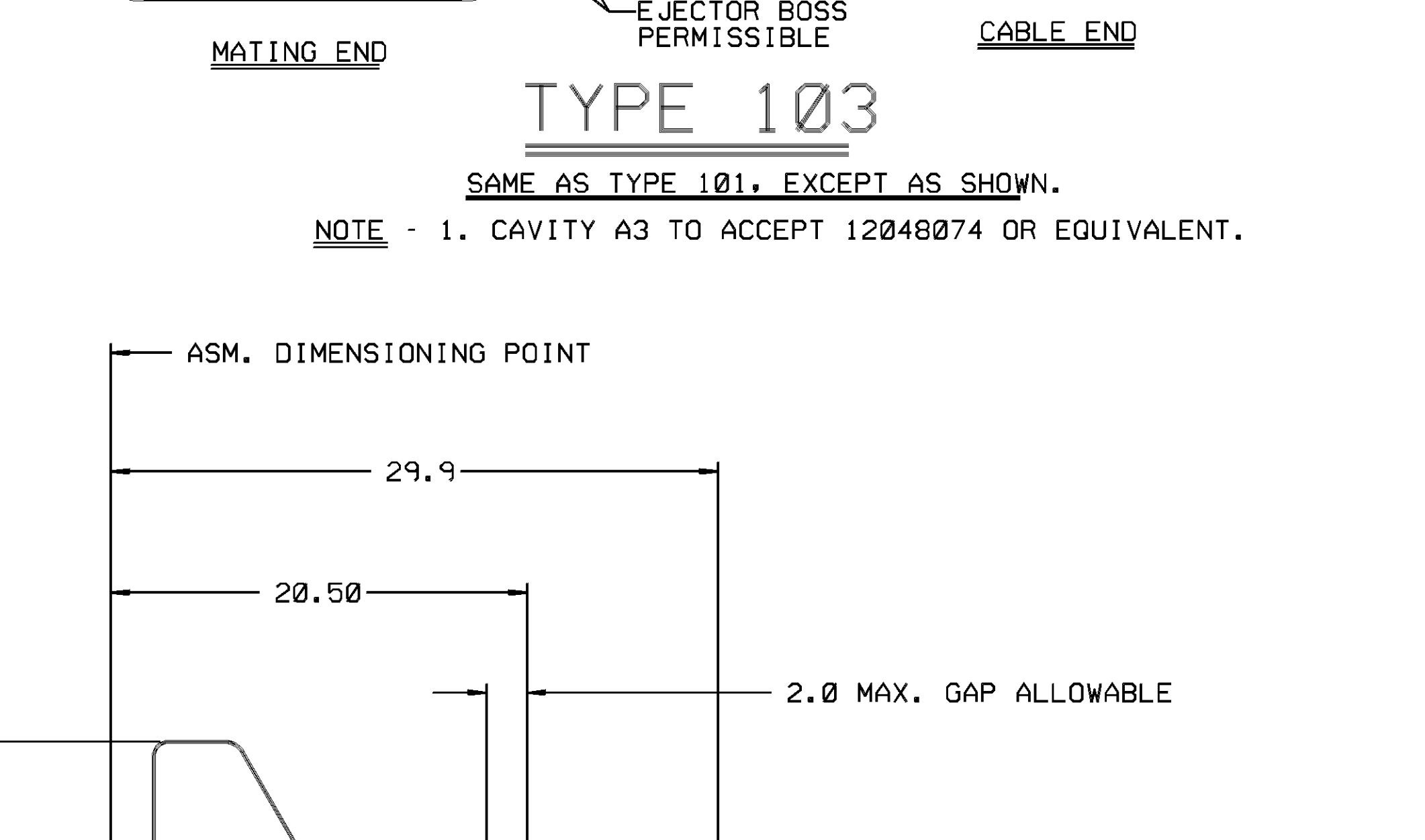
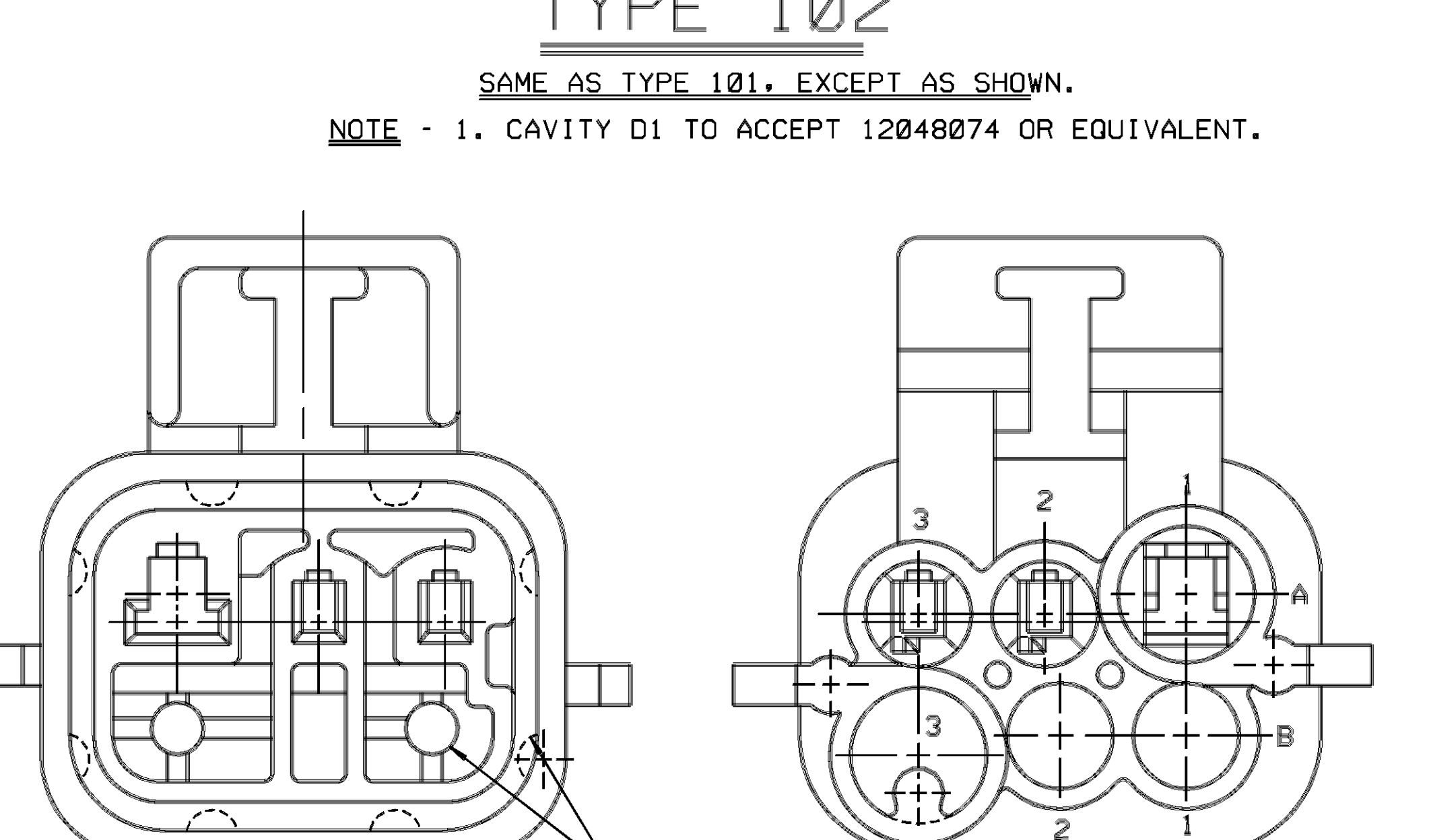
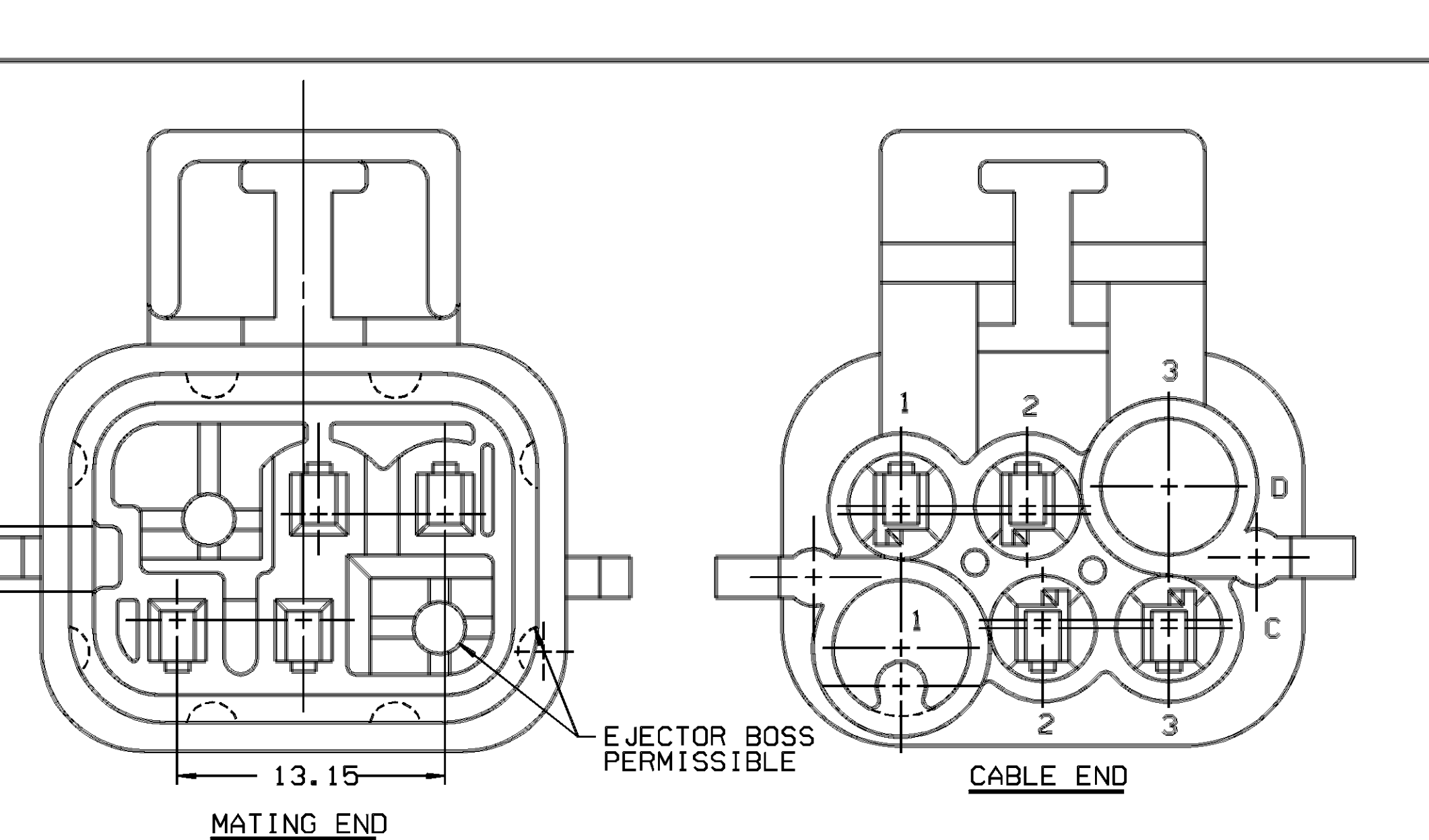
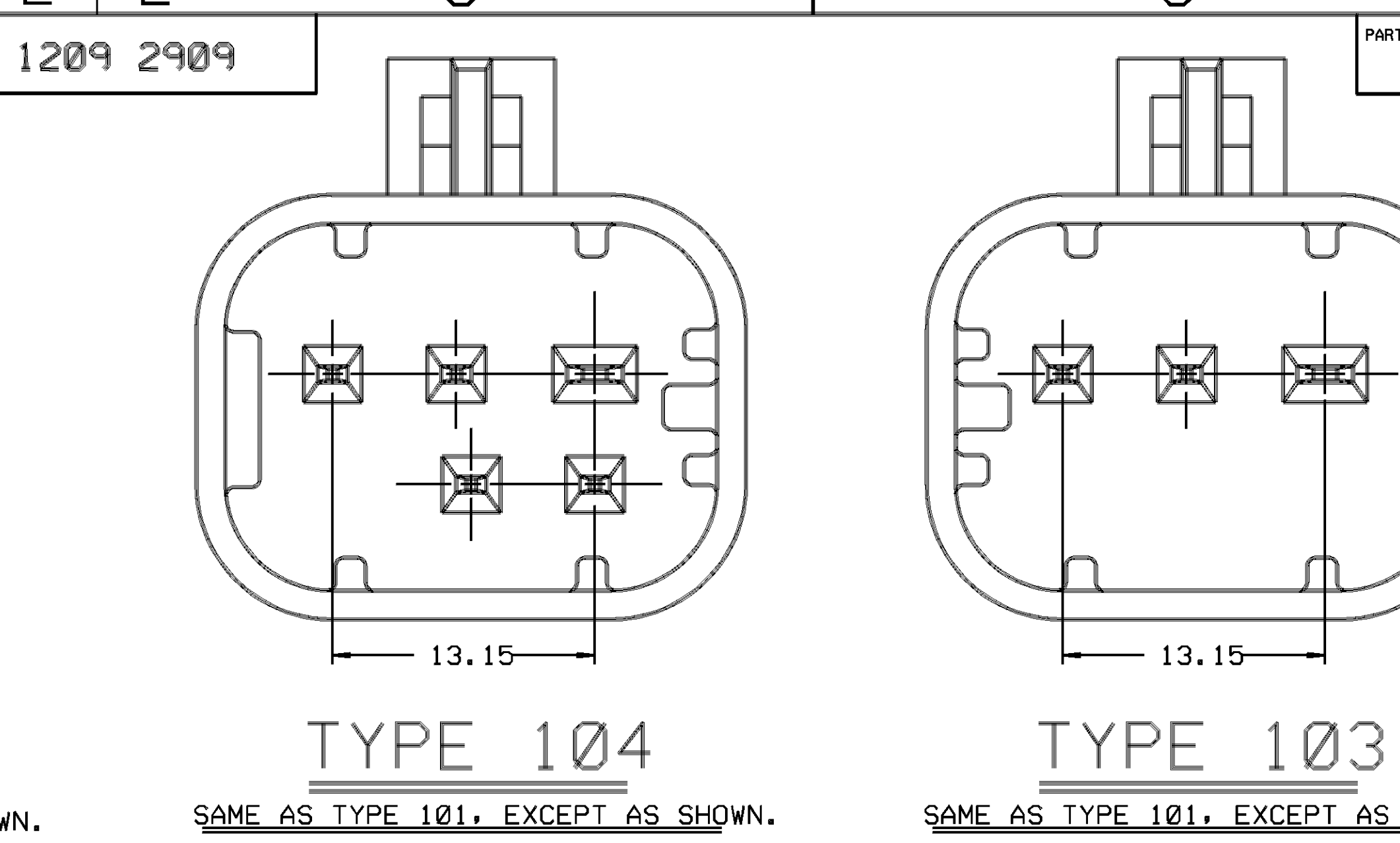
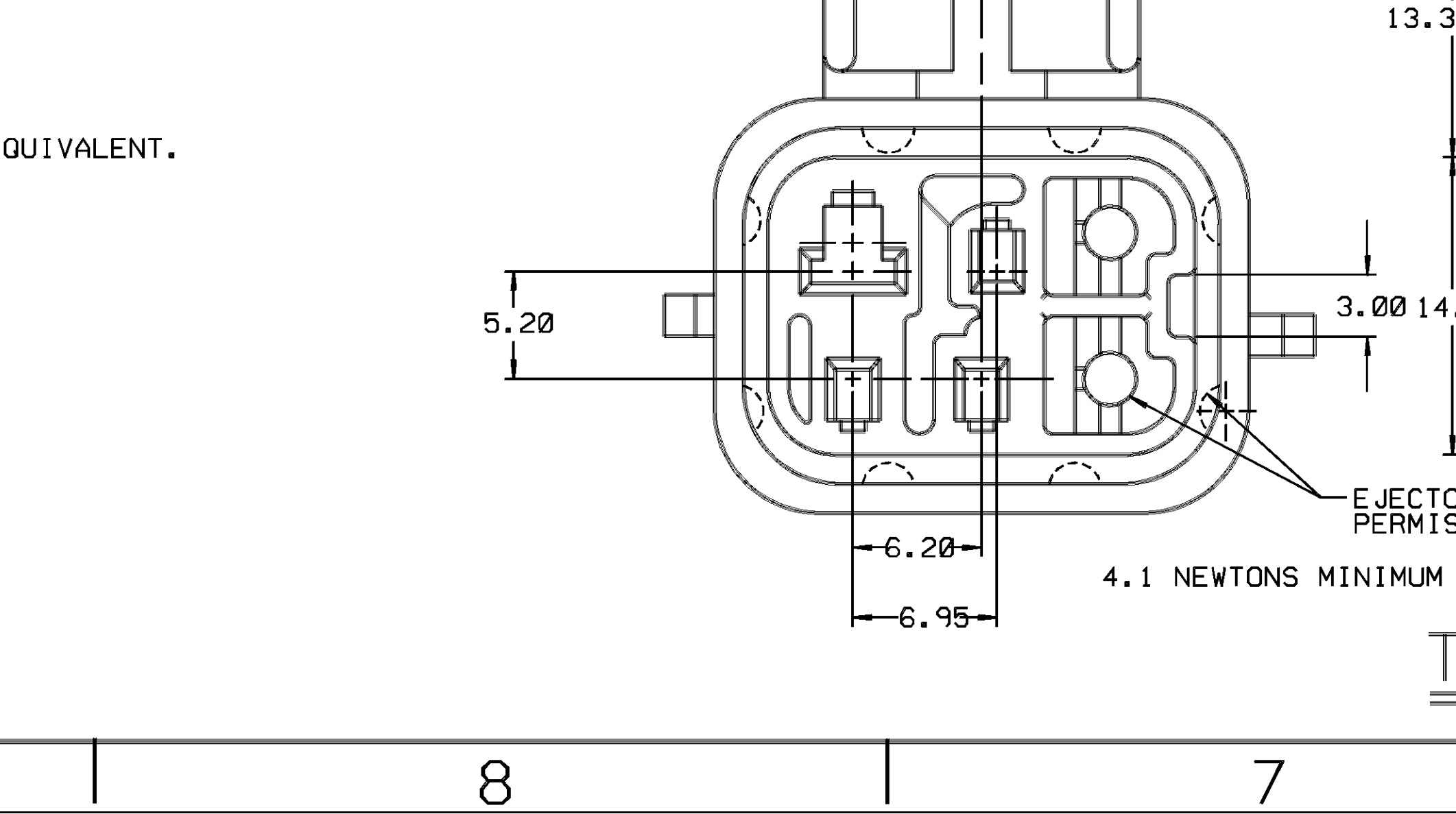
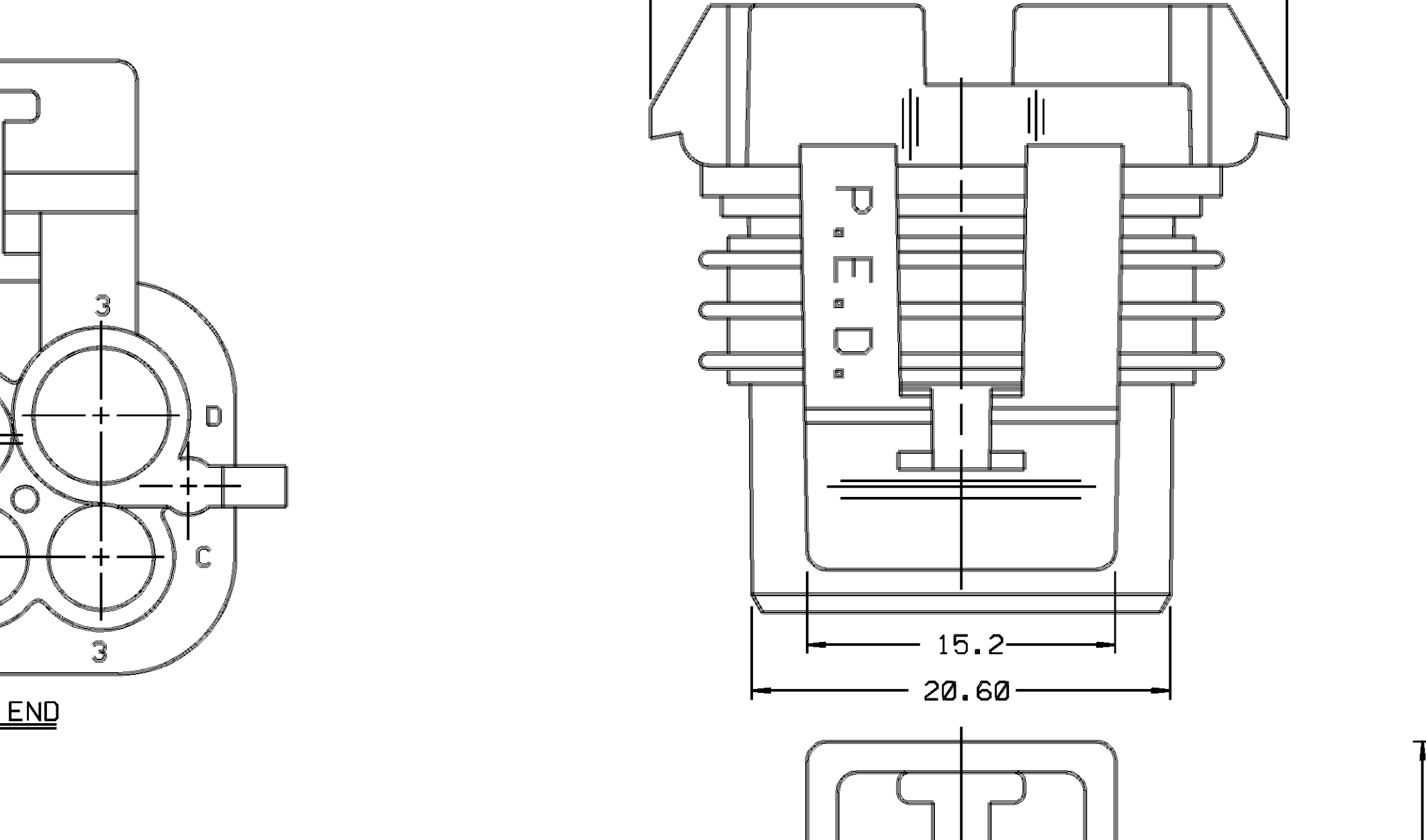
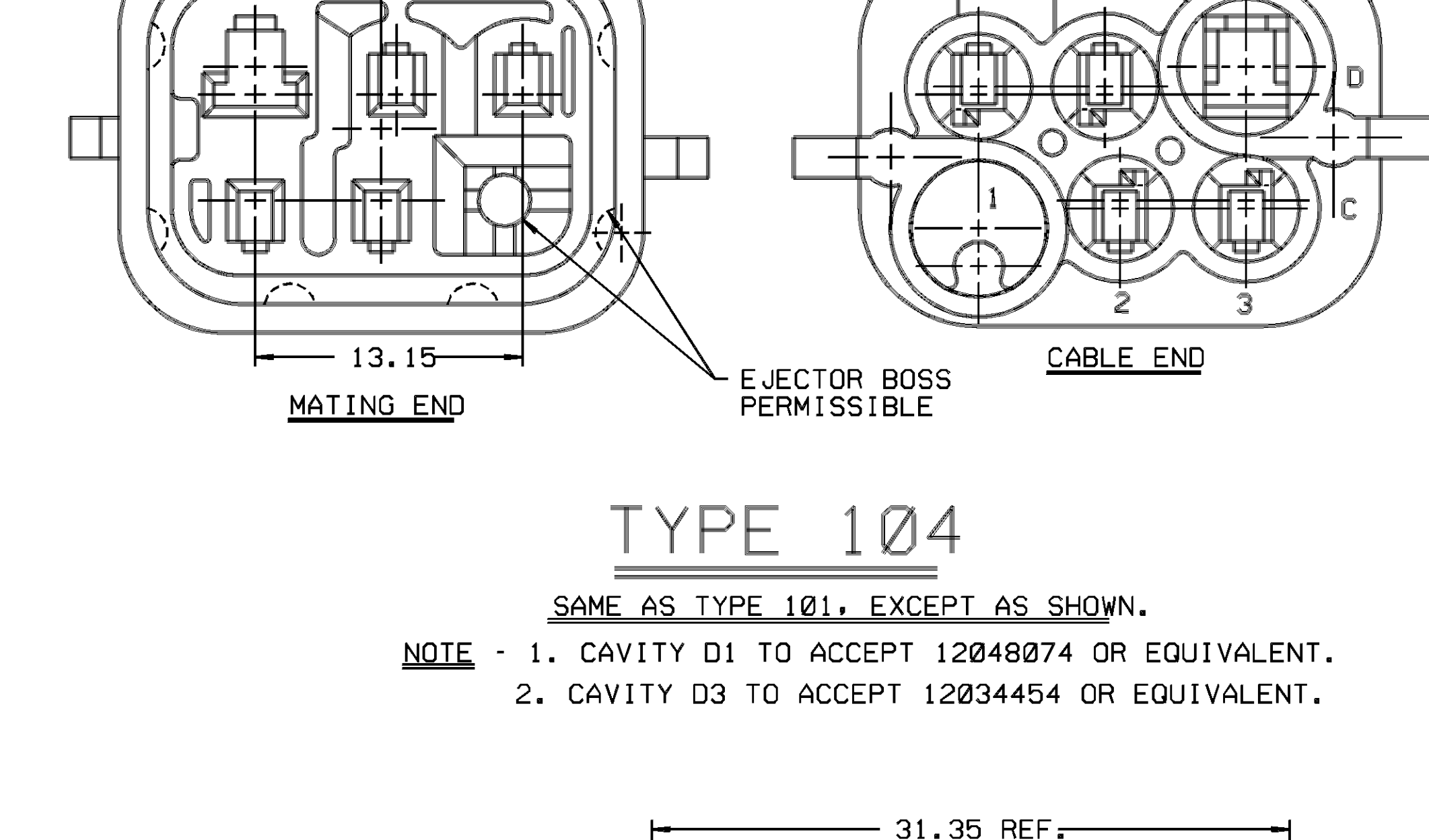
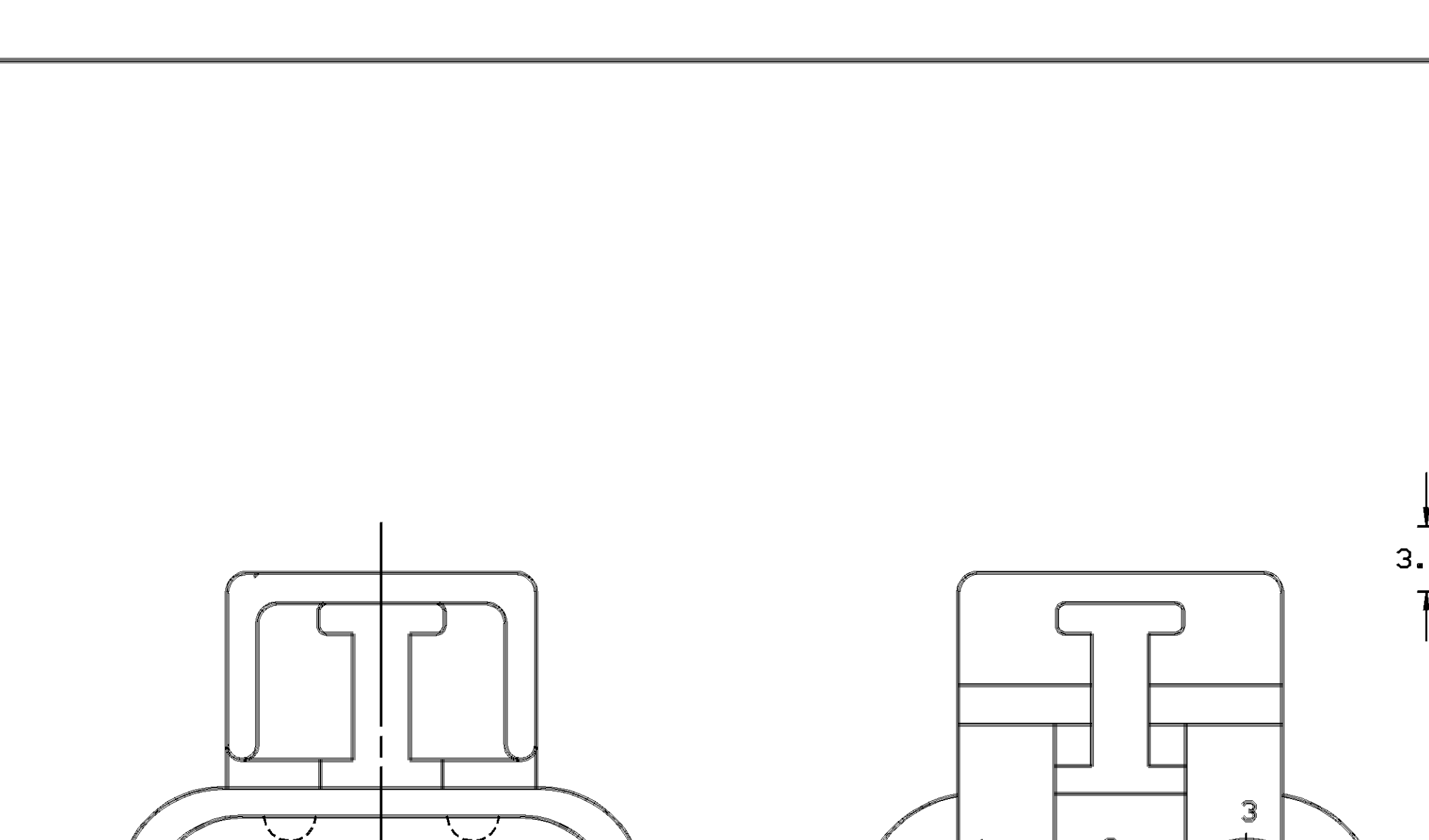
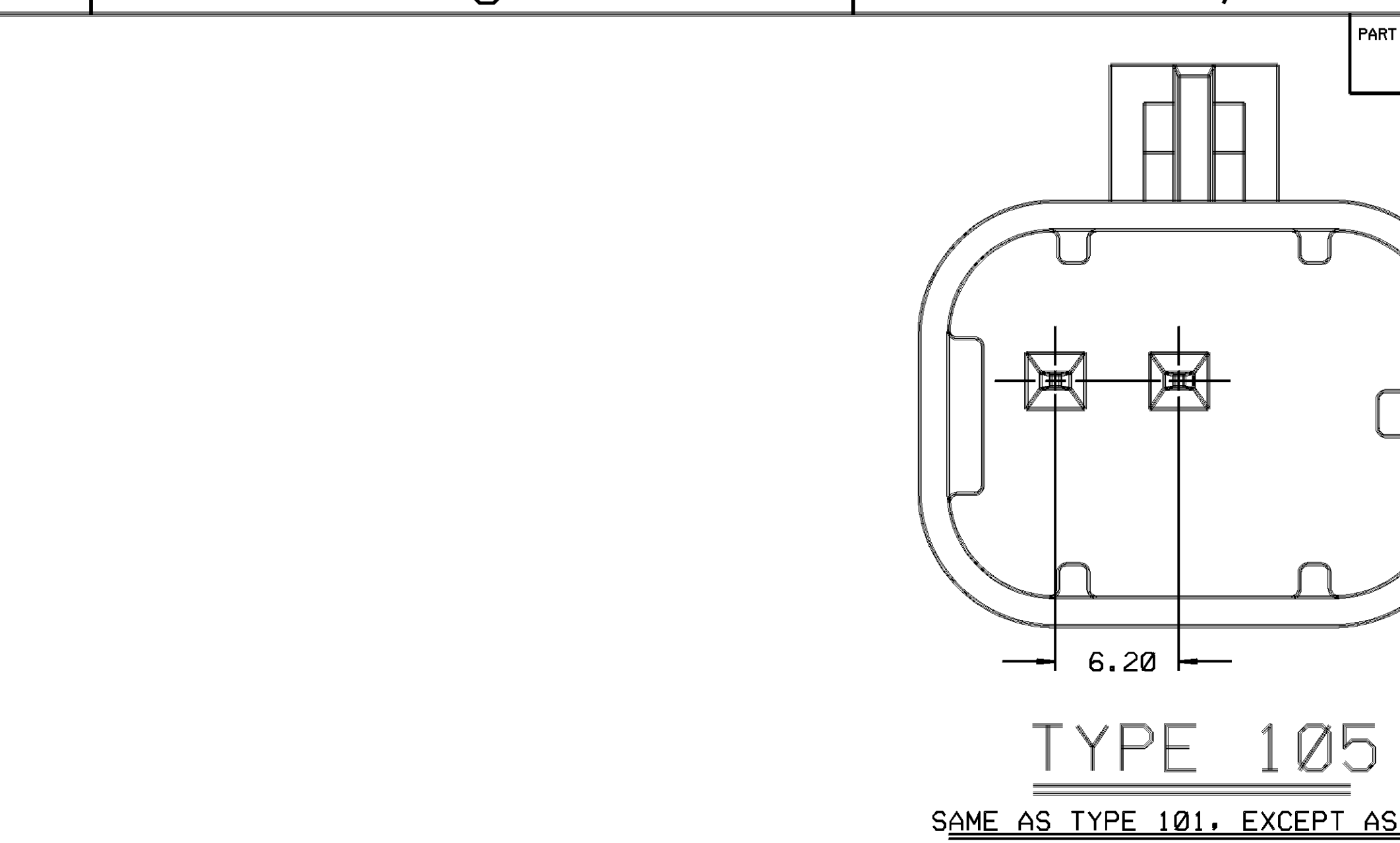
TERMINAL

A	B	C	D
---	---	---	---



TERMINAL

A	B	C	D
---	---	---	---



MATING CONNECTOR INFORMATION

NOTES-1. WHEN REQUESTING THIS INFORMATION FOR A NEW DESIGN, REQUEST THE LATEST COPY OF THIS PRINT FROM PACKARD ELECTRIC DIVISION.
2. ALL RADII 0.40, UNLESS OTHERWISE SPECIFIED.
3. DIMENSIONS ARE TO FACE OF VIEW SHOWN UNLESS OTHERWISE INDICATED.
4. 1° DRAFT ON ALL OUTSIDE SURFACES, UNLESS OTHERWISE SPECIFIED.
5. RECOMMENDED MATERIAL GLASS REINFORCED NYLON OR POLYESTER.

PART NO.	REV.	STATUS	TYPE	CONNECTOR BODY	CONNECTOR SEAL		
12110484	B		105	12110483	BROWN	12092795	GREEN
12110481	B		104	12110480	RED	12092795	GREEN
12092859	04		103	12092858	CREAM	12092795	GREEN
12092800	C		102	12092799	BLACK	12092795	GREEN
12092793	C		101	12092792	MED. GRAY	12092795	GREEN

ZONE	DATE	BY	REVISION RECORD	AUTHORITY	OR	CHK
07	08/99		P.E. DRAWING CREATION			9/08/12 RB
08	09/09		FEB1908 ADDED TO TANK			9/08/12 RB
09	07/09		FEB19783 ADDED TO TANK			9/08/12 RB
10	05/09		REVISED			RB TN
11	05/09		REVISED			
12	09/09		12092793, 2800, 2859 WAS FEB1908			
13	09/09		12092793, 2800, 2859 WAS FEB1908			
14	09/09		12092793, 2800, 2859 WAS FEB1908			
15	09/09		12092793, 2800, 2859 WAS FEB1908			
16	09/09		12092793, 2800, 2859 WAS FEB1908			
17	09/09		12092793, 2800, 2859 WAS FEB1908			
18	09/09		12092793, 2800, 2859 WAS FEB1908			
19	09/09		12092793, 2800, 2859 WAS FEB1908			
20	09/09		12092793, 2800, 2859 WAS FEB1908			
21	09/09		12092793, 2800, 2859 WAS FEB1908			
22	09/09		12092793, 2800, 2859 WAS FEB1908			
23	09/09		12092793, 2800, 2859 WAS FEB1908			
24	09/09		12092793, 2800, 2859 WAS FEB1908			
25	09/09		12092793, 2800, 2859 WAS FEB1908			
26	09/09		12092793, 2800, 2859 WAS FEB1908			
27	09/09		12092793, 2800, 2859 WAS FEB1908			
28	09/09		12092793, 2800, 2859 WAS FEB1908			
29	09/09		12092793, 2800, 2859 WAS FEB1908			
30	09/09		12092793, 2800, 2859 WAS FEB1908			
31	09/09		12092793, 2800, 2859 WAS FEB1908			
32	09/09		12092793, 2800, 2859 WAS FEB1908			
33	09/09		12092793, 2800, 2859 WAS FEB1908			
34	09/09		12092793, 2800, 2859 WAS FEB1908			
35	09/09		12092793, 2800, 2859 WAS FEB1908			
36	09/09		12092793, 2800, 2859 WAS FEB1908			
37	09/09		12092793, 2800, 2859 WAS FEB1908			
38	09/09		12092793, 2800, 2859 WAS FEB1908			
39	09/09		12092793, 2800, 2859 WAS FEB1908			
40	09/09		12092793, 2800, 2859 WAS FEB1908			
41	09/09		12092793, 2800, 2859 WAS FEB1908			
42	09/09		12092793, 2800, 2859 WAS FEB1908			
43	09/09		12092793, 2800, 2859 WAS FEB1908			
44	09/09		12092793, 2800, 2859 WAS FEB1908			
45	09/09		12092793, 2800, 2859 WAS FEB1908			
46	09/09		12092793, 2800, 2859 WAS FEB1908			
47	09/09		12092793, 2800, 2859 WAS FEB1908			
48	09/09		12092793, 2800, 2859 WAS FEB1908			
49	09/09		12092793, 2800, 2859 WAS FEB1908			
50	09/09		12092793, 2800, 2859 WAS FEB1908			

PACKARD ELECTRIC DIVISION