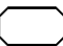
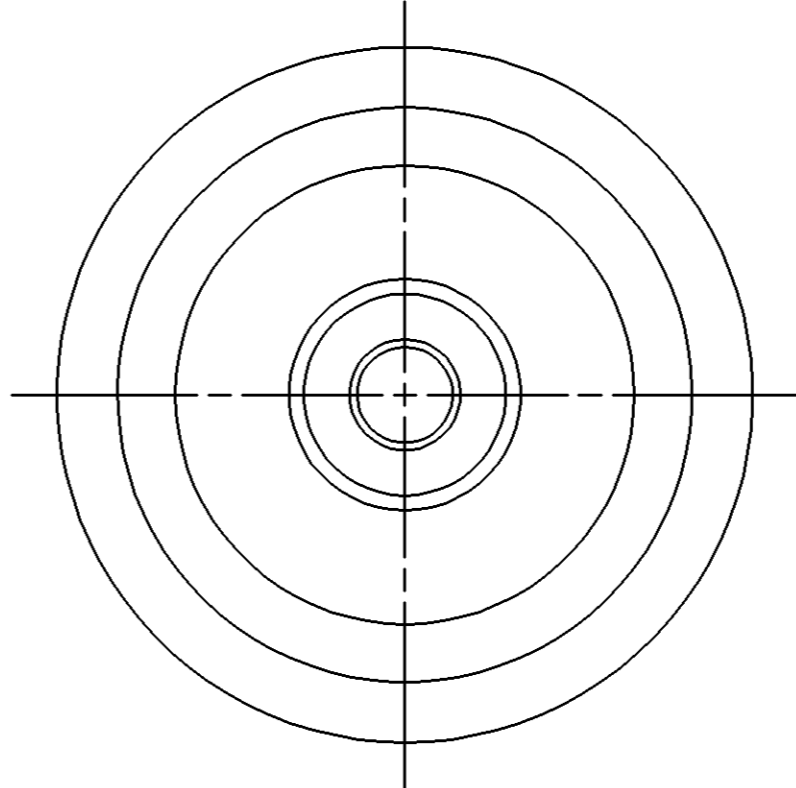
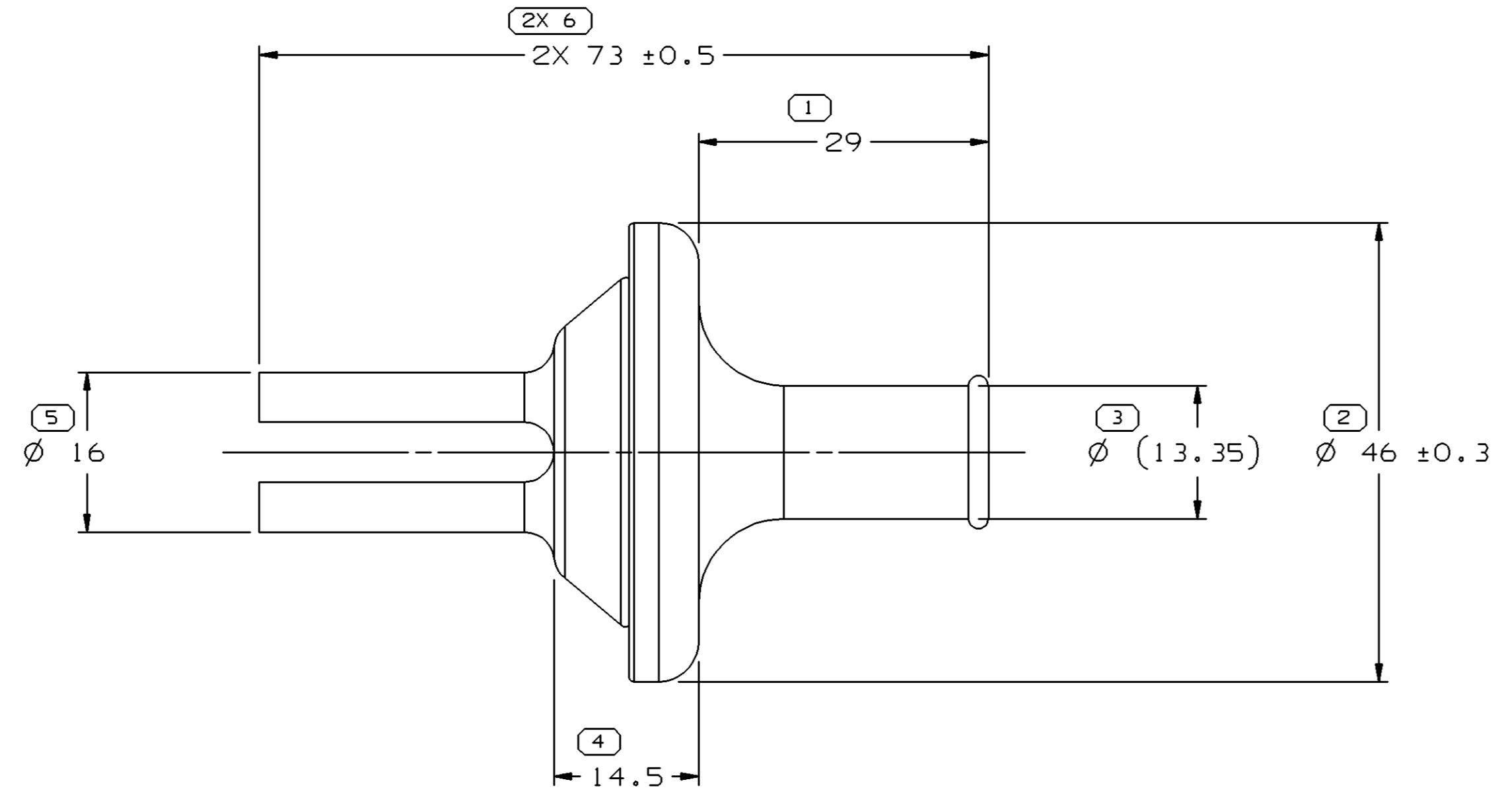
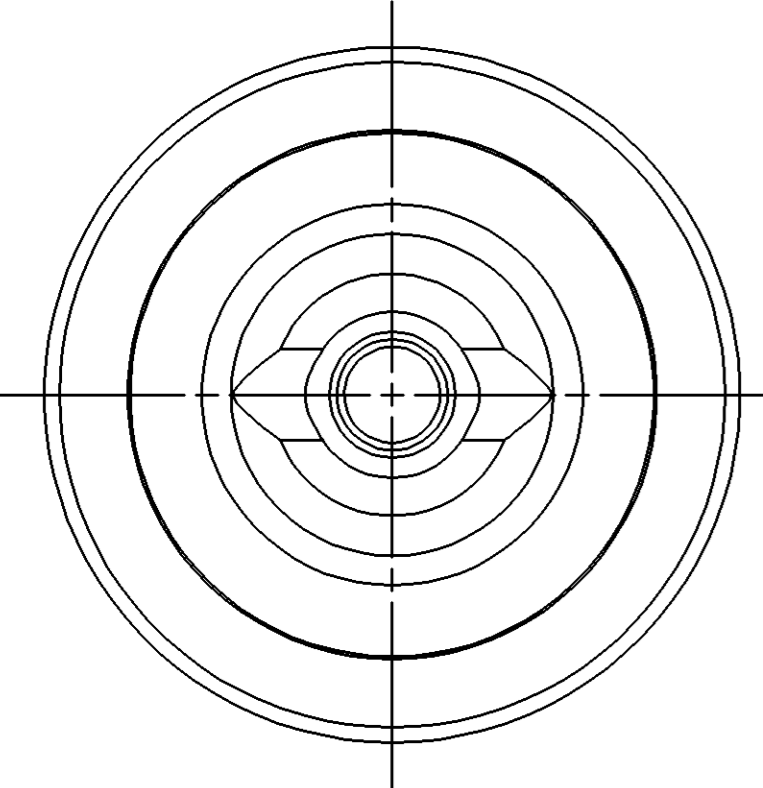
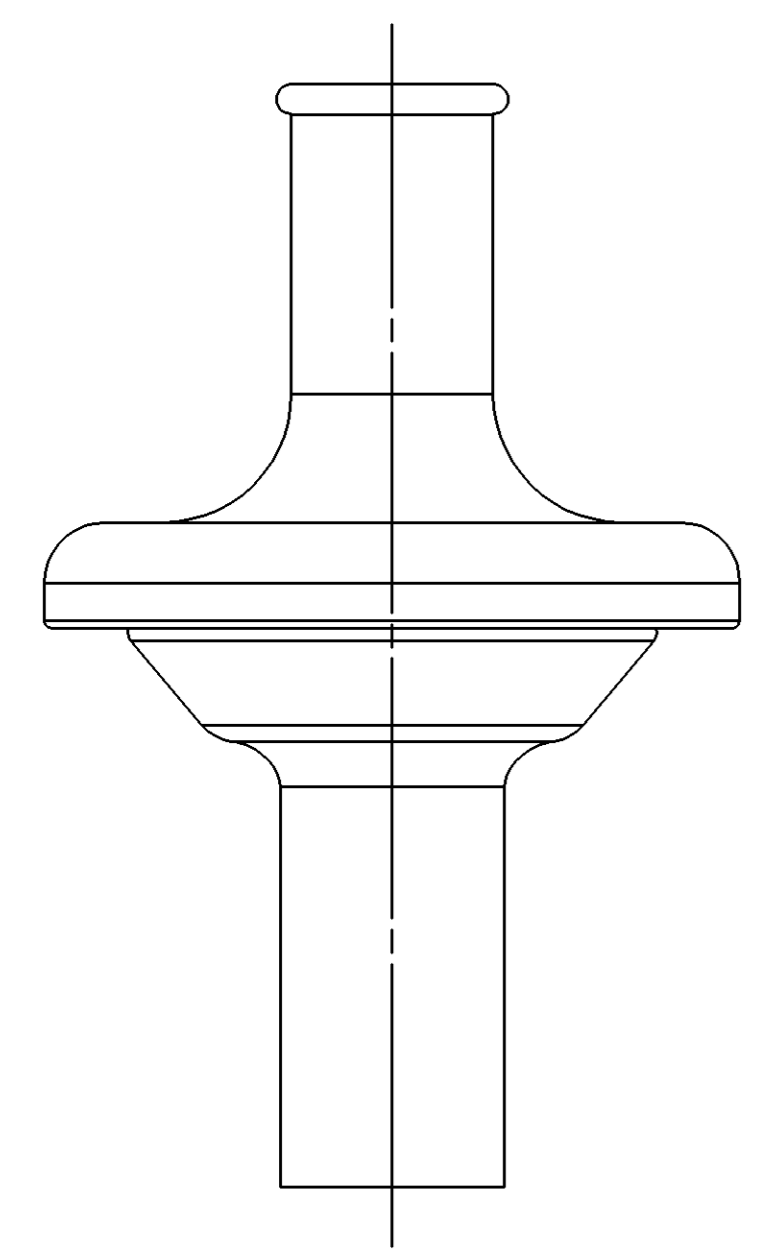


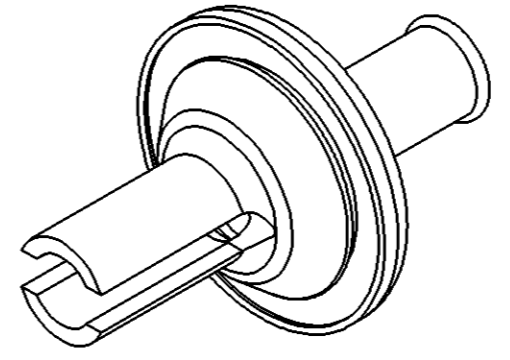
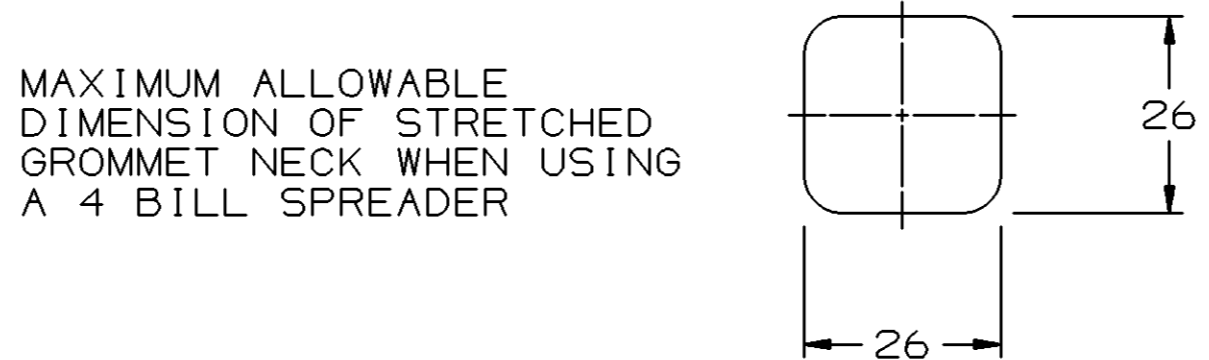
| SYMBOL DEFINITION | |
|---|----------------------------------|
| A DIMENSION WITHOUT AN INSPECTION REPORT SYMBOL  DOES NOT REQUIRE INSPECTION. IT MAY BE CONTROLLED ON THE INDIVIDUAL COMPONENT DRAWING. | TOTAL NO OF INSPECTIONS REQUIRED |
| | 7 |
| | LAST NO. USED |
| | 6 |

| MISSING SYMBOLS | DWG STATUS | | | | | ZONE | REVISION HISTORY | AUTH | DR | APVD1 | APVD2 |
|--------------------------|------------|-----|-----|-----|-----|------|--|--------|-----|-------|-------|
| | DATE | STG | REV | N/P | CHG | | | | | | |
| NO MISSING SYMBOL NUMBER | 18FE05 | R | B1 | - | - | | CLEARED REV COL AND REDRAWN TO PD, ADDED PROCESSING NOTES AND MAT'L SPEC | 264890 | JRA | JAA | MLP |

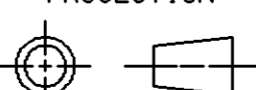


- NOTES
- UNLESS OTHERWISE SPECIFIED AND/OR INDICATED:
DIMENSIONS ARE TO FACE OF VIEW SHOWN AND AUTOMATICALLY ROUNDED BY COMPUTER FOR INSPECTION (SEE MATH MODEL FOR PRECISE DIMENSIONS). FOR ALL OTHER DIMENSIONS NOT SHOWN BUT REQUIRED FOR TOOL BUILD, SEE MATH MODEL FOR PRECISE TOOL PATH DATA.
 - THIS PART MATES TO 29 DIA HOLE IN 1.2 THICK SHEET METAL.
 - MINIMUM HARNESS BUNDLE DIAMETER IS 7.06.

- PROCESSING NOTES
- THE FOLLOWING NUMBER IS TO BE PUT ON THE PRODUCT DRAWING AS THE MAXIMUM ALLOWABLE STRETCH DIMENSION: 26MM AS MEASURED IN THE FOLLOWING FASHION:



| DIMENSIONAL RANGE (MM) | | CHART | C |
|--------------------------------------|------|-------|---------------|
| FROM | > 0 | > 25 | > 60 |
| TO | 25 | 60 | 80 |
| TOLERANCE UNLESS OTHERWISE SPECIFIED | | | |
| | ±0.3 | ±0.5 | ±0.6 ±0.75% |
| ANGULAR TOLERANCE ±2° | | | |

| | | | |
|--|---------------|--------------|--|
| DWG TYPE | | PART DRAWING | |
| STYLE | | | |
| VOLUME (CM ³) | DISTR CODE | | |
| 17.007 | D | | |
| UNLESS OTHERWISE SPECIFIED | | | |
| THIS DOCUMENT IS IN ACCORDANCE WITH ASME Y14.5M-1994 AS AMENDED BY THE GM GLOBAL DIMENSIONING AND TOLERANCING ADDENDUM-2001. SEPARATE PATTERNS OF FEATURES MAY BE GAGED SEPARATELY REGARDLESS OF DATUM REFERENCES. | | | |
| ALL DIMENSIONS ARE IN MILLIMETERS | | | |
| REFERENCE | | | |
| 12160828 | | | |
| THIRD ANGLE PROJECTION | DO NOT SCALE | | |
|  | USE MATH DATA | | |

| | | | |
|---|--------------|--------------------|--------------------|
| DELPHI | | | |
| DELPHI PACKARD ELECTRIC SYSTEMS WARREN, OH | | | |
| DR M. FRANCIS | | DATE 27MY94 | |
| APVD1 R. RAMOS S. | | 01JN94 | |
| APVD2 R. RAMOS S. | | 01JN94 | |
| APVD3 M. FRANCIS | | 03JN94 | |
| APVD4 | | | |
| APVD5 | | | |
| SUBSTANCES OF CONCERN AND RECYCLED CONTENT PER DELPHI 10949001 | | | |
| MATERIAL M4433002 | | | |
| DRAWING NAME GROM TAPE ON | | | |
| DRAWING NUMBER 12160828 | | | |
| SIZE A1 | SCALE 2:1 | FRAME NO 1 OF 1 | SHEET NO 1 OF 1 |
| STG R | REV B1 | N/P - | |