

MATING BLADE INFORMATION  
SCALE 8:1

MATERIAL SPECIFICATIONS

RECOMMENDED  
BASE METAL - CDA-210, GILDING, EXTRA SPRING TEMPER  
PLATING - 0.005±0.0025 MM THICK TIN

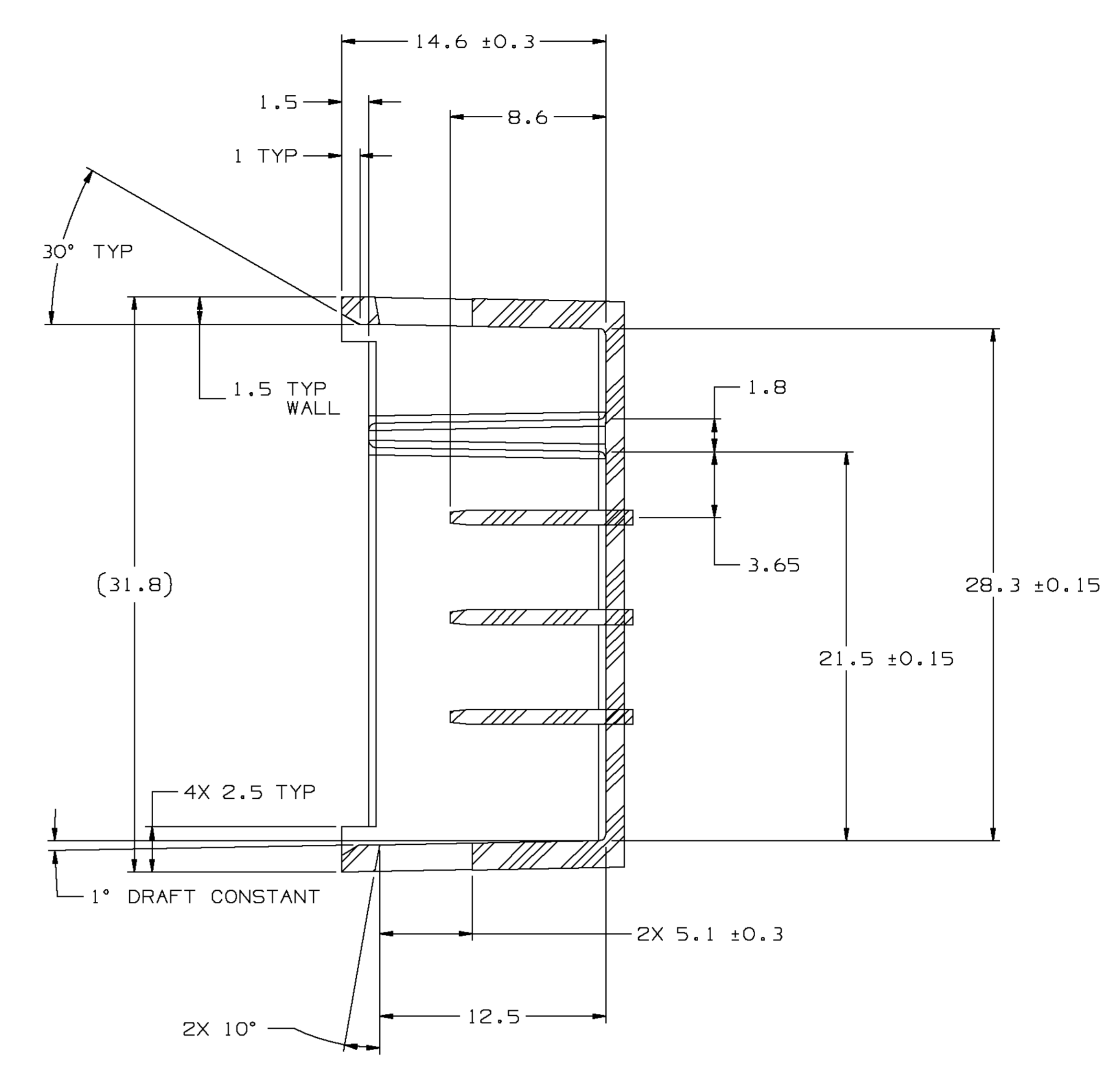
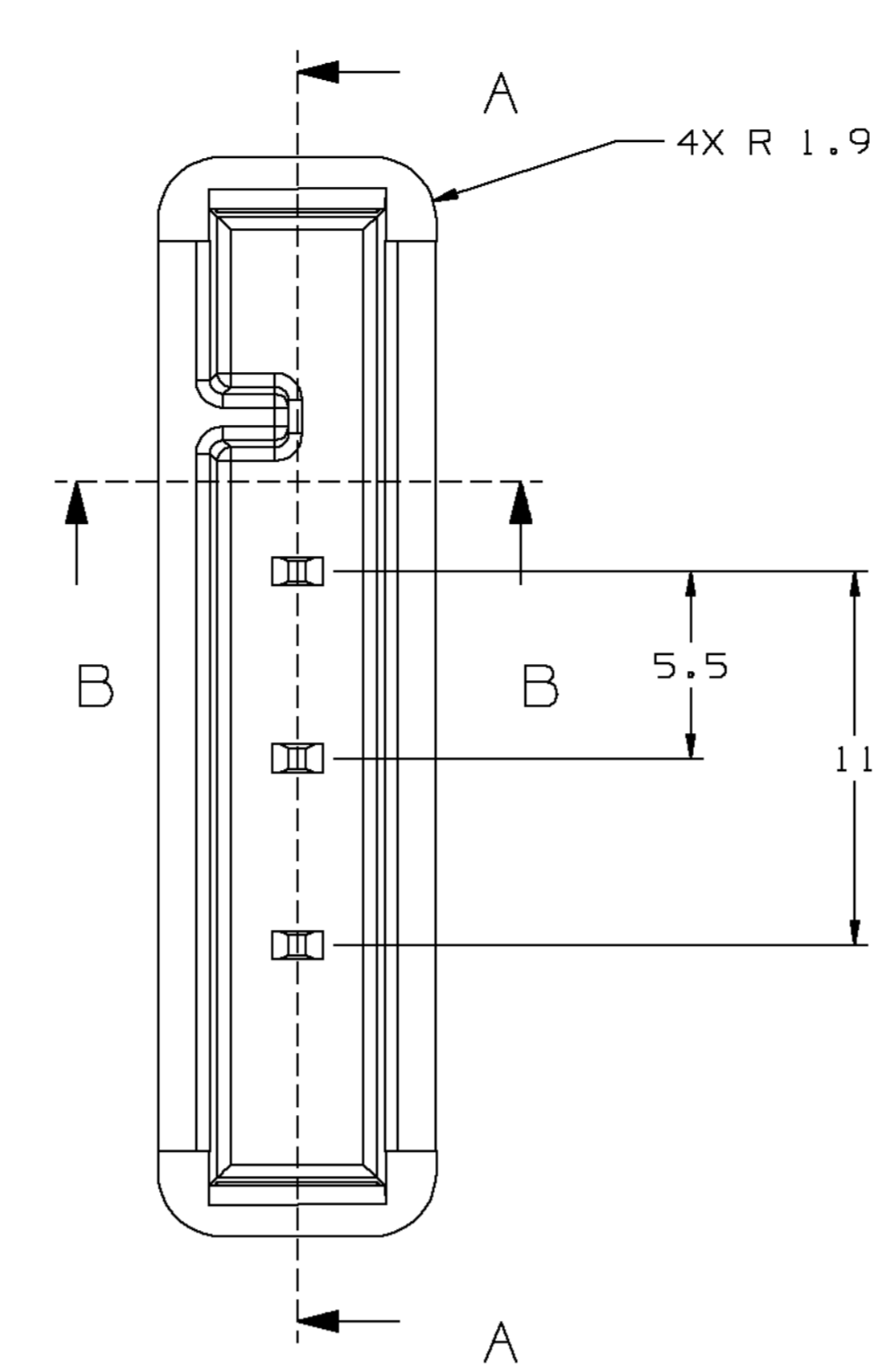
MINIMUMS  
ELECTRICAL CONDUCTIVITY - ≥20% IACS @ 20°C. USE OF A MATERIAL WITH CONDUCTIVITY <20% IACS MUST BE APPROVED BY PACKARD ELECTRIC MATERIALS ENGINEERING

TENSILE STRENGTH - 407 MPa

PLATING - FOR LOW ENERGY (≤5V) AND NON-PASSENGER COMPARTMENT POWER CIRCUITS, 0.0050±0.0025MM THICK TIN. FOR MATERIALS CONTAINING 10% OR MORE ZINC, AN UNDERPLATE OF COPPER 0.005±0.0025MM THICK IS REQUIRED

SYMBOL DEFINITION		TOTAL NO OF INSPECTIONS REQUIRED	MISSING SYMBOLS
A	DIMENSION WITHOUT AN INSPECTION REPORT SYMBOL DOES NOT REQUIRE INSPECTION. IT MAY BE CONTROLLED ON THE INDIVIDUAL COMPONENT DRAWING.	14	NO MISSING SYMBOL NUMBER
		LAST NO. USED	14

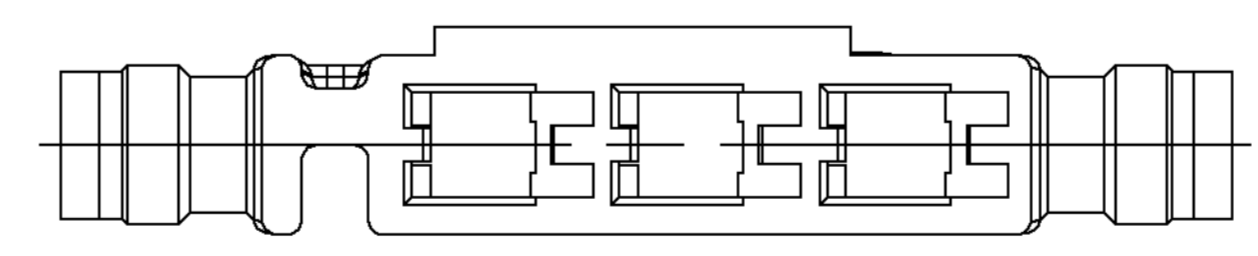
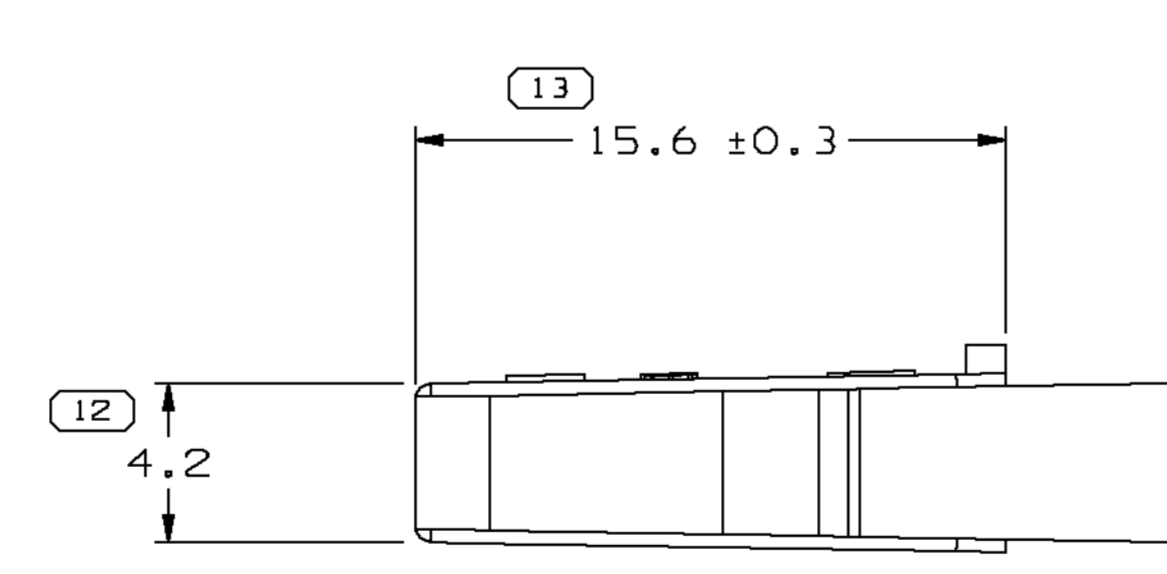
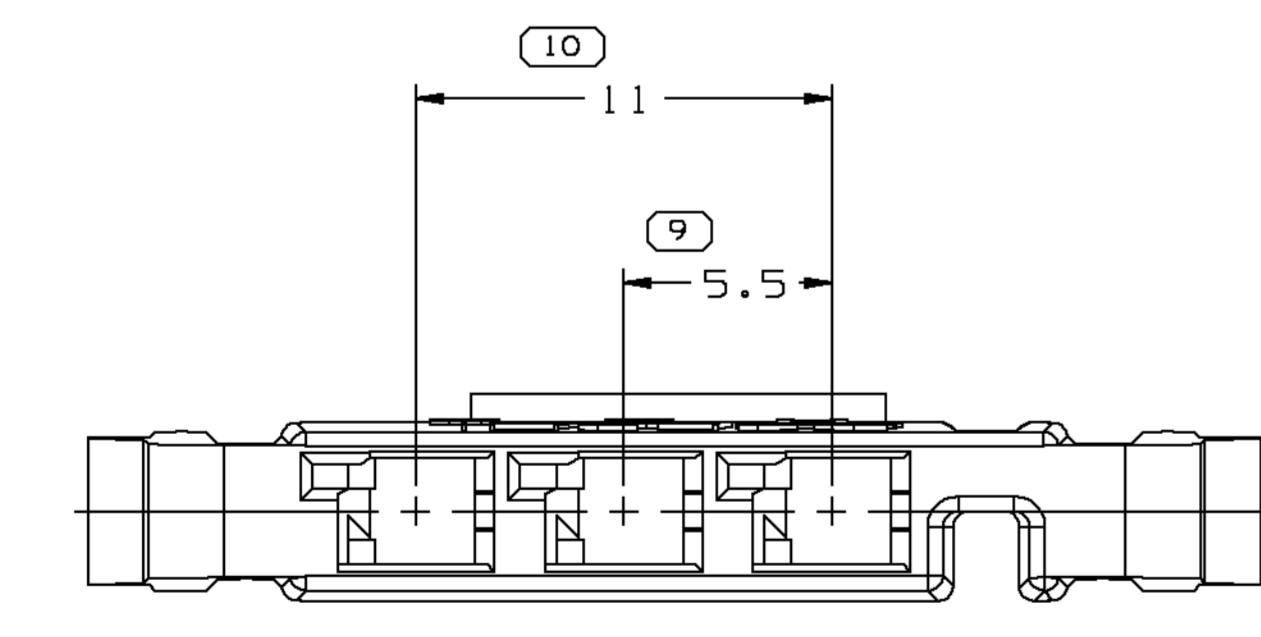
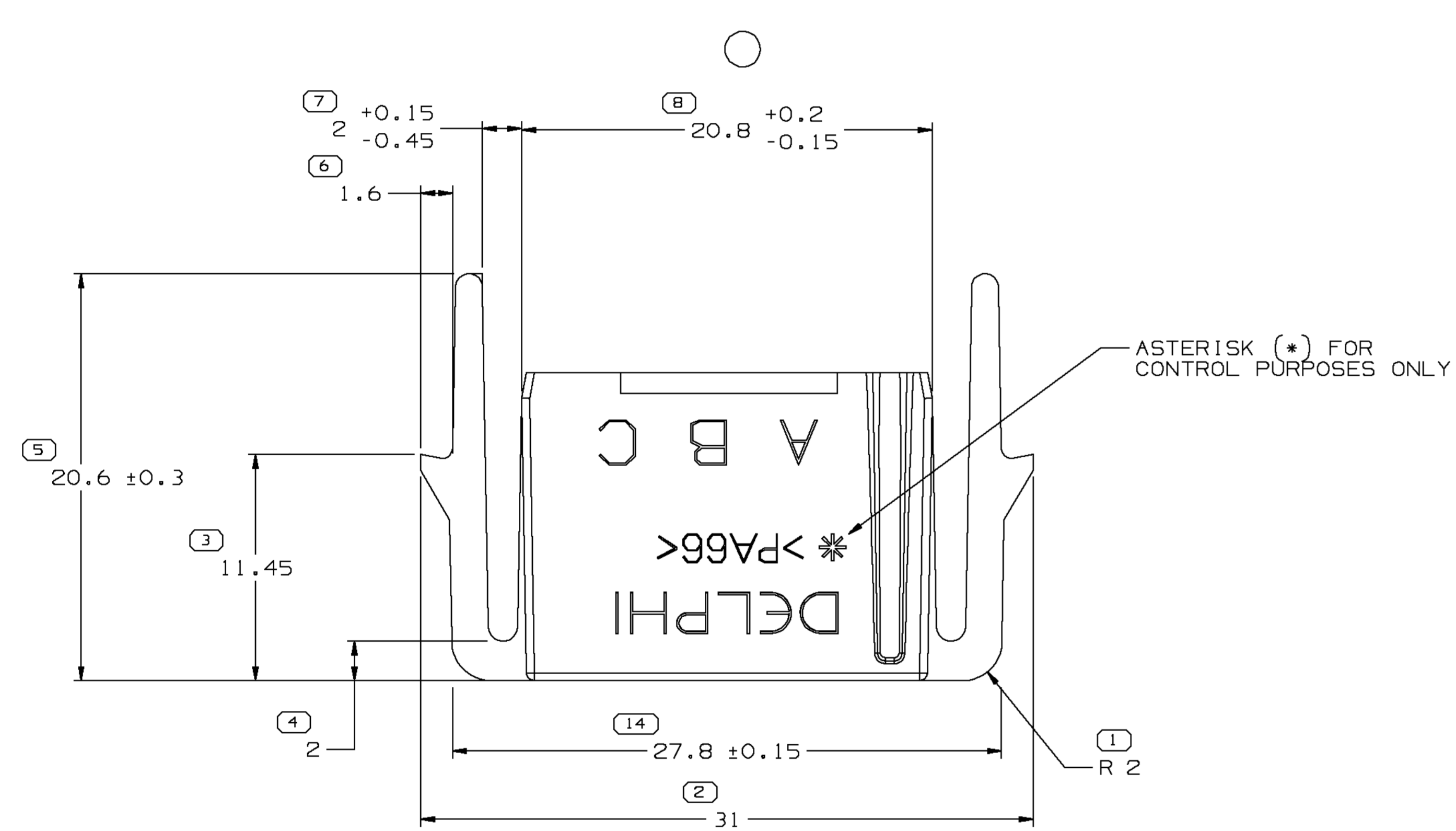
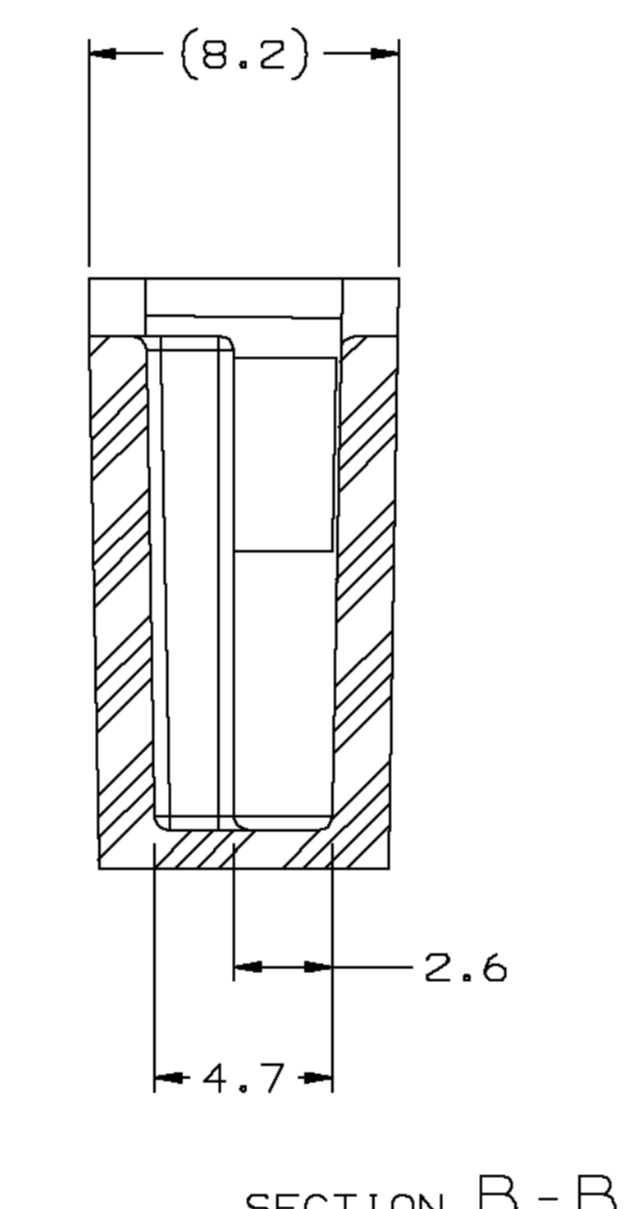
DWG STATUS	DATE	REV	BY	CHKD	ZONE	REVISION HISTORY	AUTH	DR	APVD	1	2
20FE02	R	A2	-	-	-	REDRAWN TO PD. MAT'L SPEC WAS R0071786 AND 20.B +0.2/-0.15 WAS 20.B AND ADDED NOTES (2 PLCS)	221409	JTD	EGR	GM	



NOTES

1. UNLESS OTHERWISE SPECIFIED AND/OR INDICATED: DIMENSIONS ARE TO FACE OF VIEW SHOWN AND AUTOMATICALLY ROUNDED BY COMPUTER FOR INSPECTION (SEE MATH MODEL FOR PRECISE DIMENSIONS). ALL RADI 0.4, UNLESS OTHERWISE SPECIFIED DRAFT IS 1° ON ALL OUTSIDE SURFACES

MATING CONNECTOR INFORMATION



- NOTES
- UNLESS OTHERWISE SPECIFIED AND/OR INDICATED: DIMENSIONS ARE TO FACE OF VIEW SHOWN AND AUTOMATICALLY ROUNDED BY COMPUTER FOR INSPECTION (SEE MATH MODEL FOR PRECISE DIMENSIONS). FOR ALL OTHER DIMENSIONS NOT SHOWN BUT REQUIRED FOR TOOL BUILD, SEE MATH MODEL FOR PRECISE TOOL PATH DATA.
  - MATERIAL RECYCLING CODE >PA66< PER SAE J1344. (2.3)X(0.1) RAISED CHARACTERS AS SHOWN TO BE LOCATED ON ANY EXTERIOR SURFACE. OPTIONAL CONSTRUCTION TO BE NO MATERIAL RECYCLING CODE.
  - THIS PART TO MATE WITH MANIFOLD PRESSURE SWITCH OR EQUIVALENT
  - MATING COMPONENTS: TERMINAL 12124075 OR EQUIVALENT
  - (2.3)X(0.1) RAISED DELPHI CORPORATE BRAND TO BE LOCATED ON ANY EXTERIOR SURFACE, PREFERABLY VISIBLE AT FINAL ASSEMBLY. OPTIONAL CONSTRUCTION TO BE "PED" OR NO LOGO.

FROM	TO	DIMENSIONAL RANGE (MM)	TOLERANCE UNLESS OTHERWISE SPECIFIED	CHART ET
0	20	>0	±0.15	1
20	30	>20	±0.2	2
30	70	>30	±0.3	3
70	100	>70	±0.4	4
100	150	>100	±0.5	5
150	200	>150	±0.6	6
200	250	>200	±1	7
250	300	>250	±1.2	8
300	400	>300	±1.5	9

DWG TYPE	PART DRAWING
STYLE	
VOLUME (DWG)	1,198
ROUTING	6900
UNLESS OTHERWISE SPECIFIED	
THIRD ANGLE PROJECTION	
DO NOT SCALE	
USE MATH DATA	

**DELPHI**  
DELPHI PACKARD ELECTRIC SYSTEMS  
WARREN, OH

DR	DATE
APVD1 HENRY HOKE	04FE94
APVD2 HENRY HOKE	04FE94
APVD3 S. VUKMER	16FE94
APVD4	
APVD5	

MATERIAL: M3592004 PA66 1M HS RED

DRAWING NAME: CONN 3F M/P 150.2 RED

DRAWING NUMBER: 12162200

SIZE: A0 SCALE: 5:1 FRAME NO: 1 OF 1 SHEET NO: 1 OF 1 REV: 1 N/P