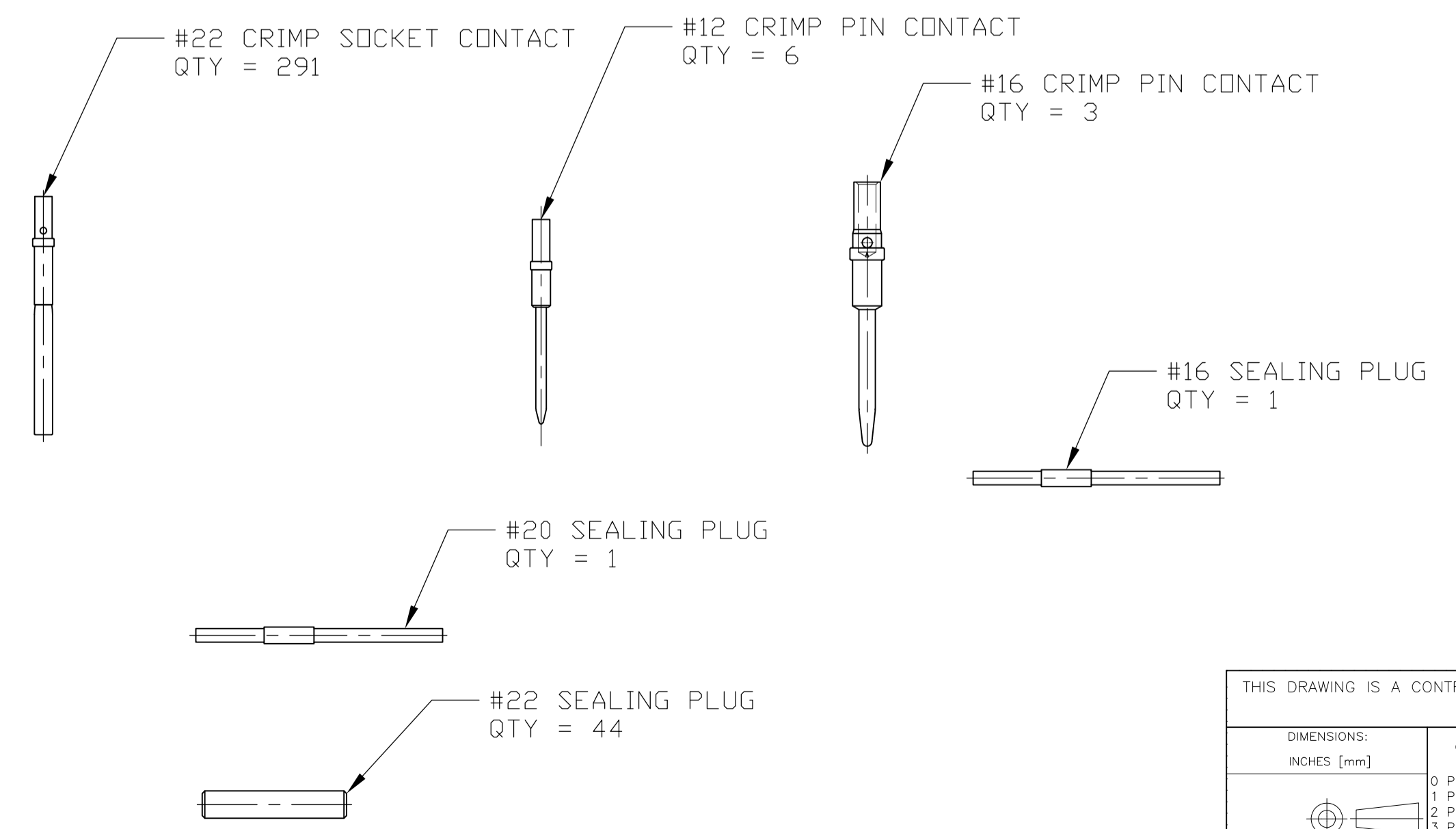
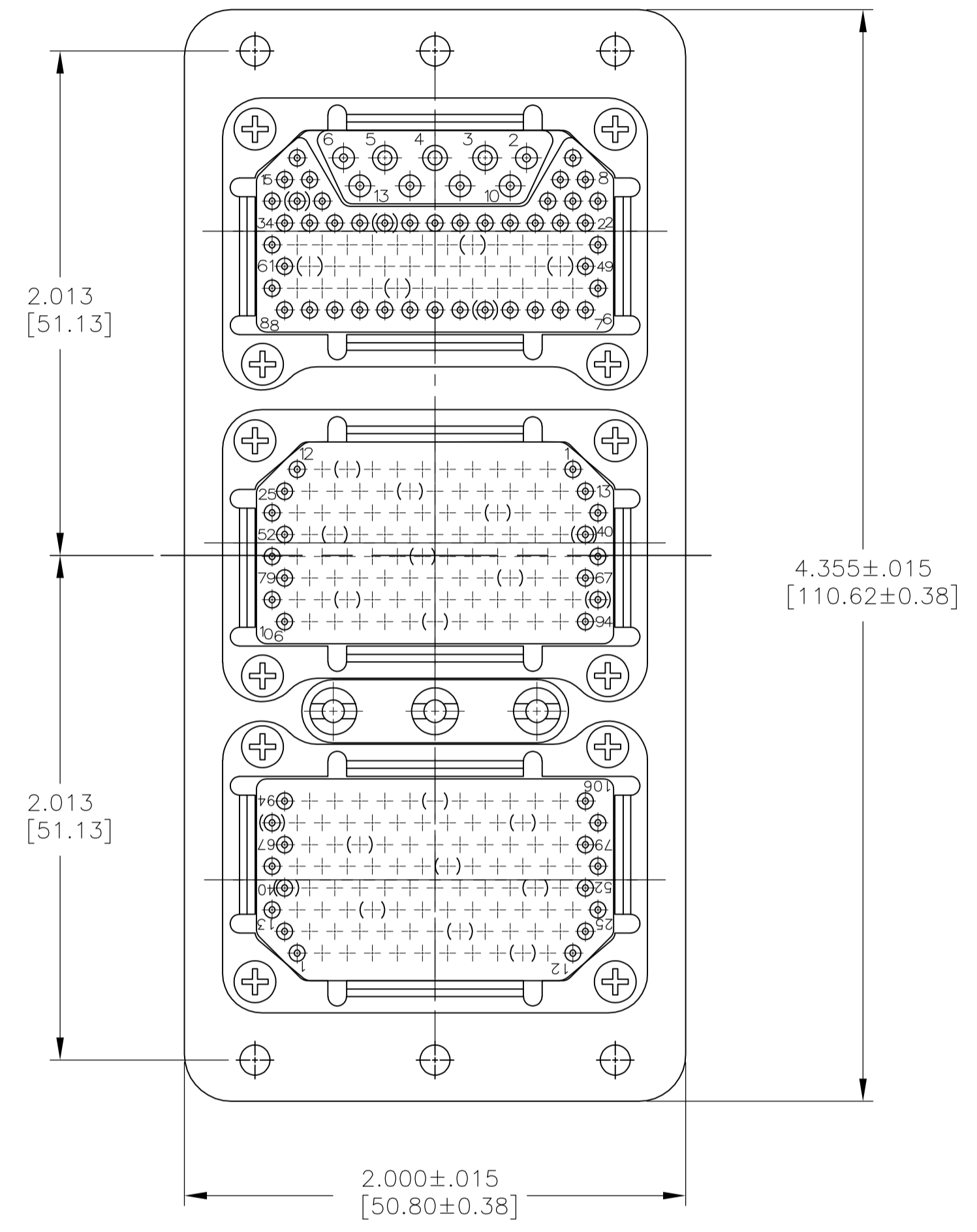
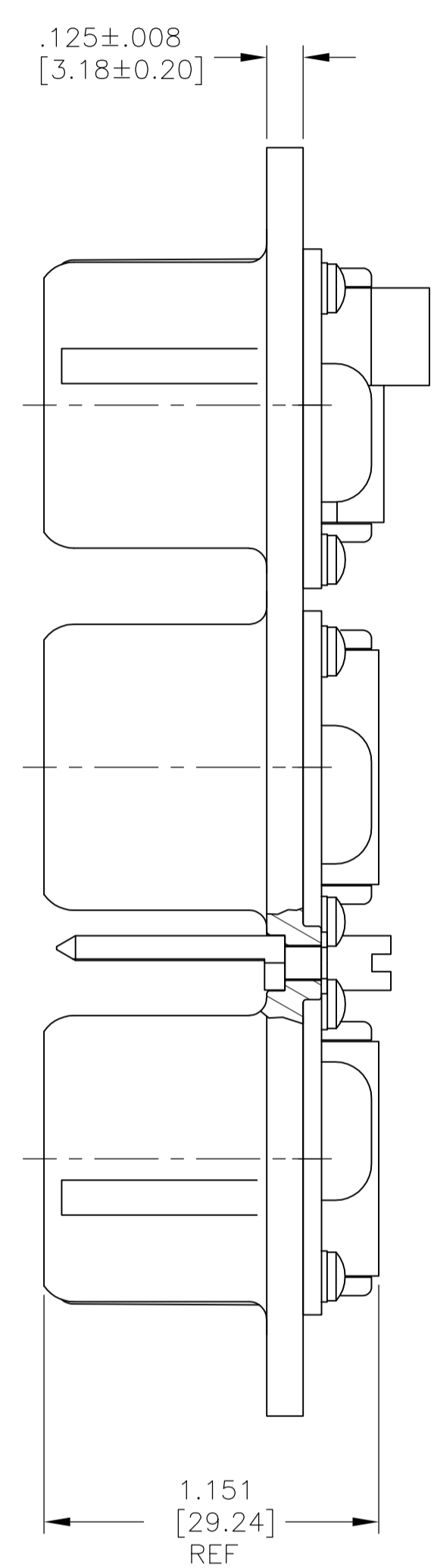
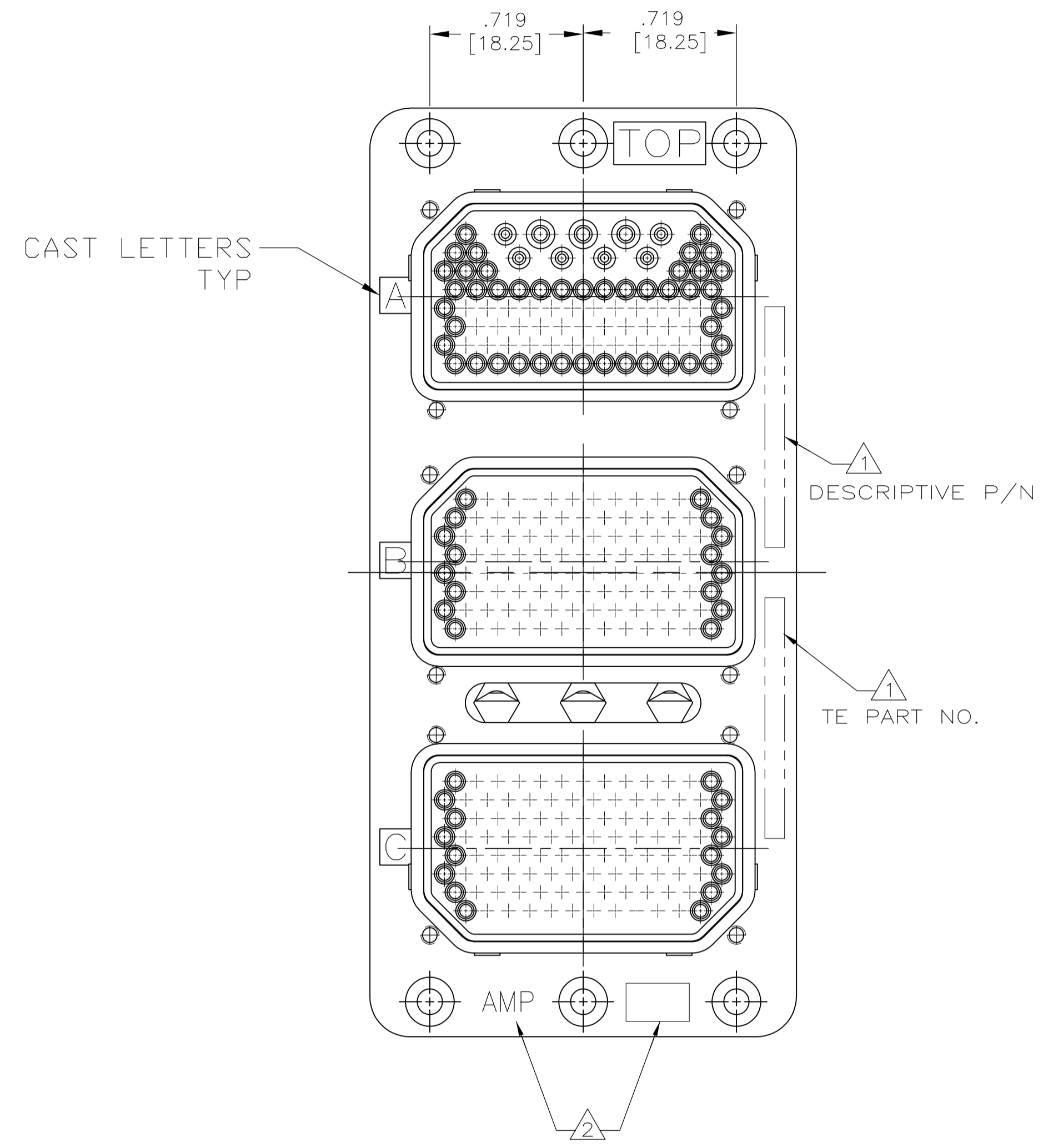


| LOC | | DIST | | REVISIONS | | | |
|-----|-----|-------------|---------|-----------|------|--|--|
| P | LTR | DESCRIPTION | DATE | DN | APVD | | |
| A | | RELEASED | 3-13-14 | CT | DE | | |

1. TE PART NO. AND DESCRIPTIVE PART NO. MARKED IN THESE AREAS.
2. "AMP" AND DATE CODE MARKED IN THIS AREA.
3. KEYING ASSEMBLED IN THE "01" POSITION.
4. MATERIAL AND FINISH:
SHELL: DIE CAST ALUMINUM ALLOY PER FED. SPEC QQ-A-591.
STANDARD FINISH: CADMIUM PLATE PER QQ-P-416, TYPE I,
CLASS 2 YELLOW CHROMATE CONVERSION.
INSERT RETENTION PLATE: ALUMINUM ALLOY, BLUE ANODIZE
PER MIL-A-8625.
SCREWS AND WASHERS: STAINLESS STEEL, PASSIVATED.
POLARIZING POSTS: STAINLESS STEEL, PASSIVATED.
POLARIZING NUTS: BRASS, CADMIUM PLATED.



1218358-1
PART NUMBER

| | | | | |
|--|--|------------------|---------|--|
| THIS DRAWING IS A CONTROLLED DOCUMENT. | | DN C.C.THOMAS | 3-13-14 | TE Connectivity |
| DIMENSIONS: INCHES [mm] | | CHK D.FARY | 3-13-14 | |
| TOLERANCES UNLESS OTHERWISE SPECIFIED: | | APVD D.FARY | 3-13-14 | NAME ASSY,ARINC 404,RME3P88S106S106S-0001 (400) |
| 0 PLC ± - | | PRODUCT SPEC | | |
| 1 PLC ± - | | APPLICATION SPEC | | |
| 2 PLC ± - | | SIZE | A1 | CAGE CODE |
| 3 PLC ± .010 [0.25] | | DRAWING NO | 00779 | DRAWING NO |
| 4 PLC ± - | | WEIGHT | | RESTRICTED TO |
| ANGLES ± - | | CUSTOMER DRAWING | | |
| MATERIAL | | SCALE 2:1 | | SHEET 1 OF 1 |
| FINISH | | REV A | | |