

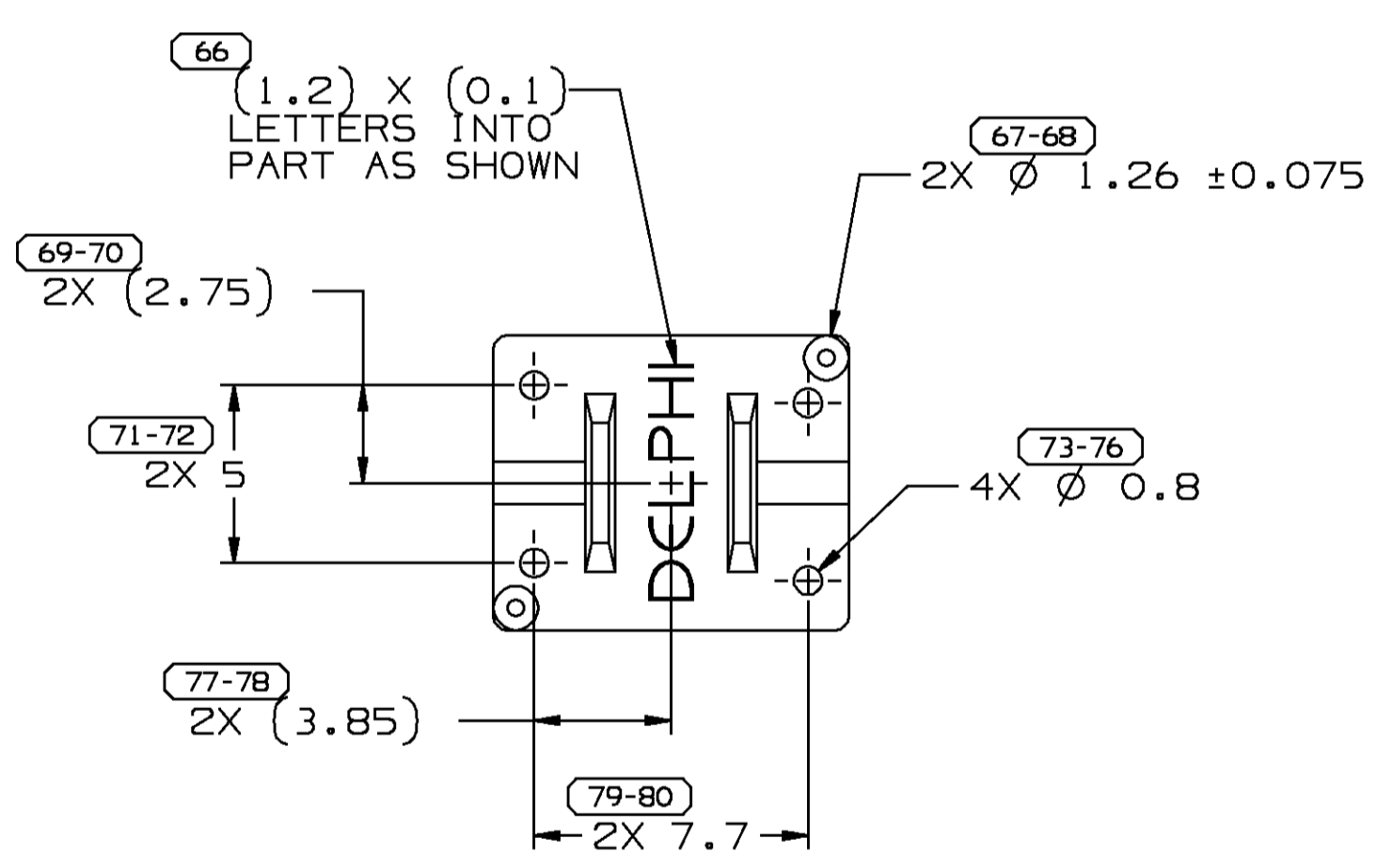
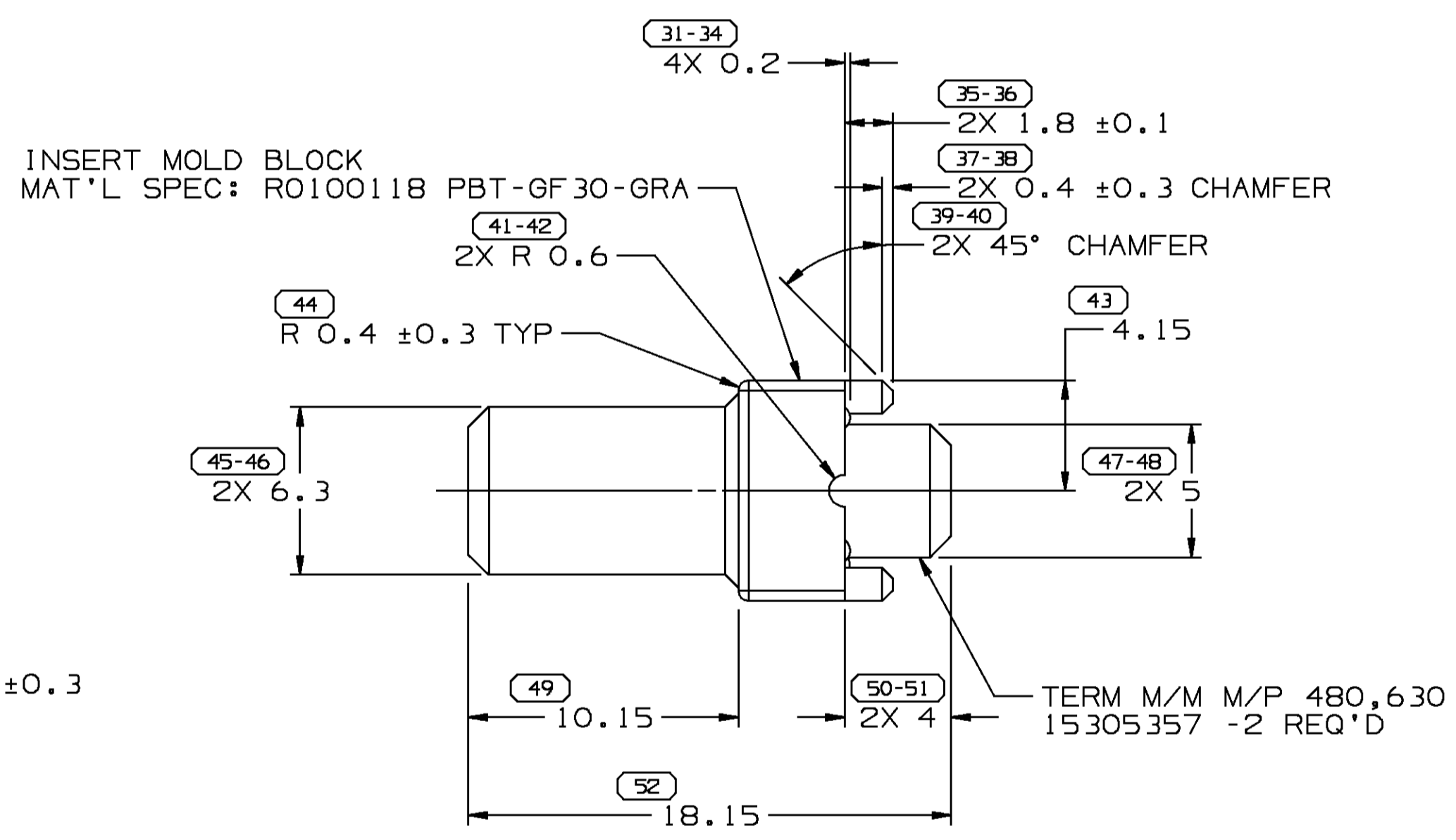
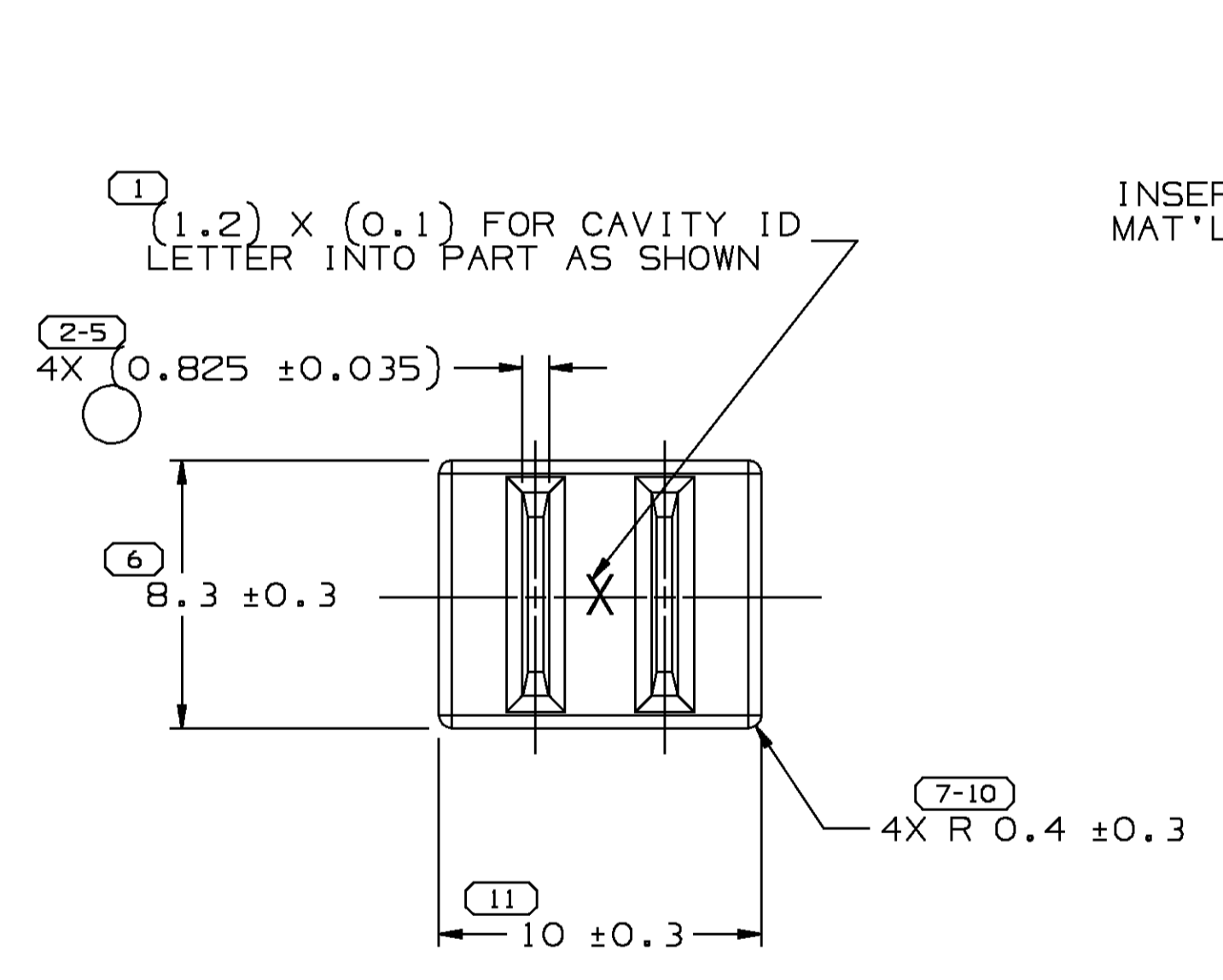
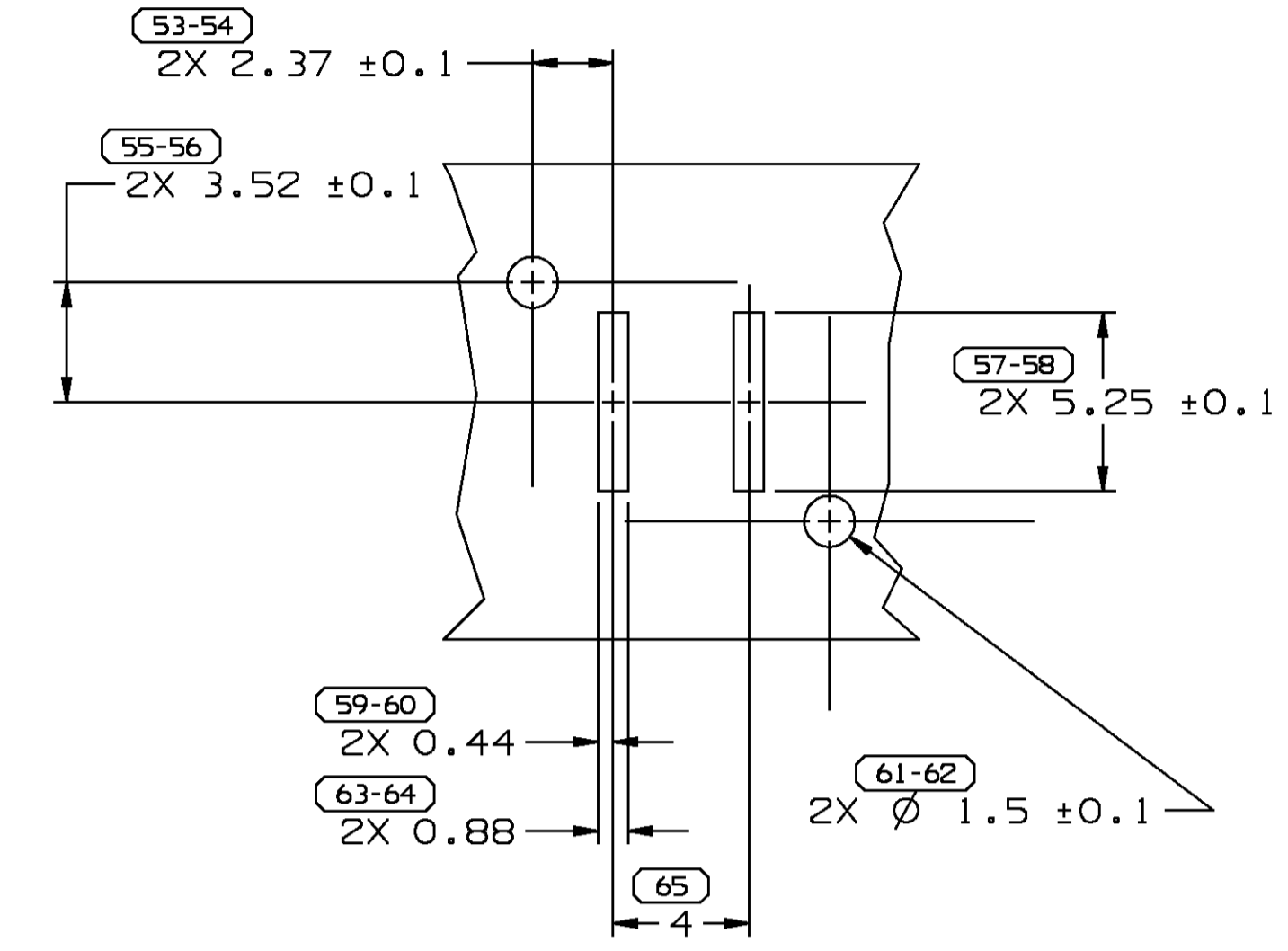
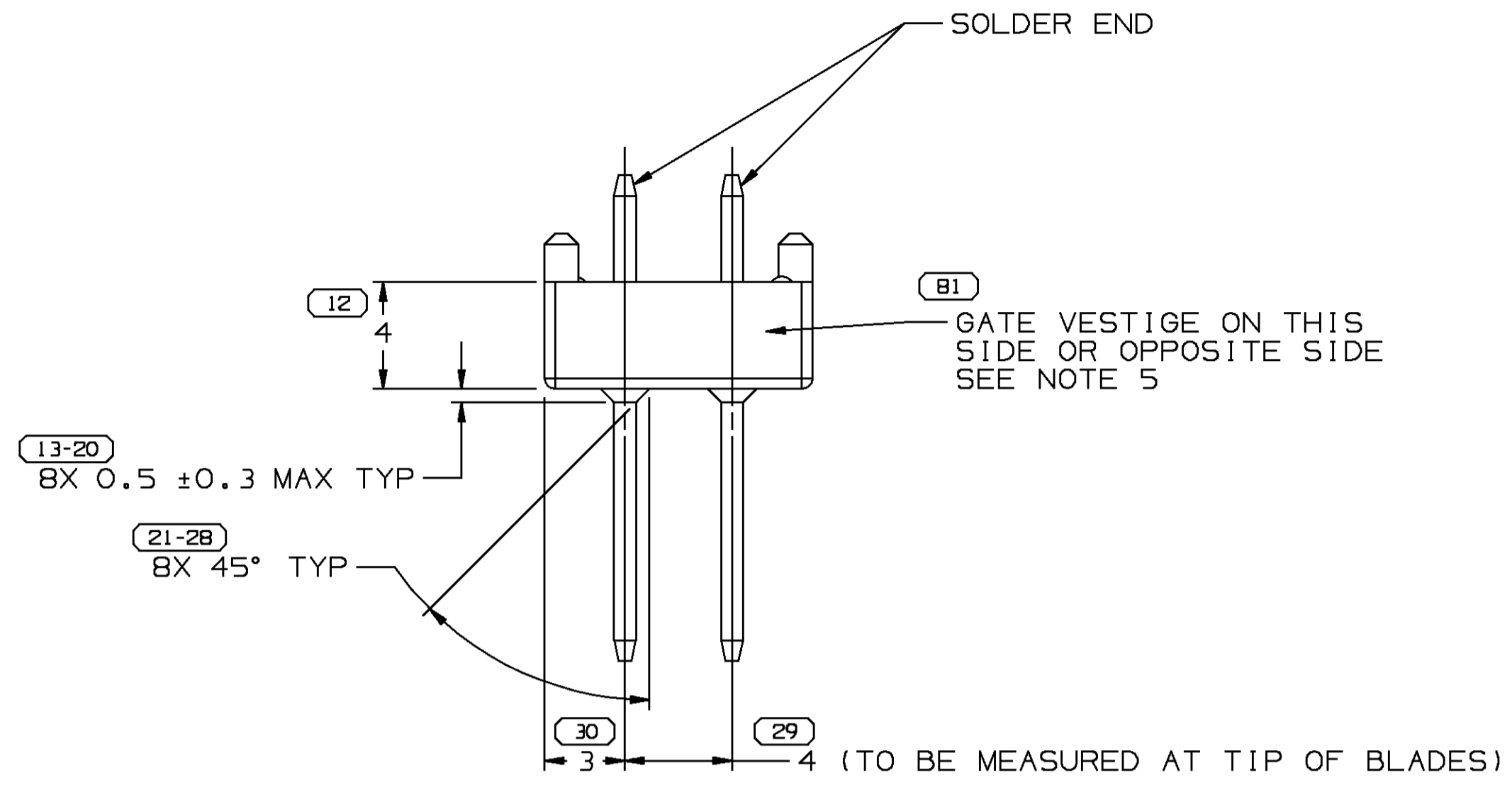
DO NOT SCALE

DELPHI PACKARD ELECTRIC SYSTEMS
WARREN, OHIO 44466

PART NO
12191899

SYMBOL DEFINITION		MISSING NUMBERS	
THE NUMBER INSIDE THE SYMBOL () CORRESPONDS TO THE NUMBER ON THE INSPECTION REPORT FOR THIS DRAWING/PART NUMBER	TOTAL NO. OF SYMBOLS ON DRAWING	37	
	LAST NO. USED	81	

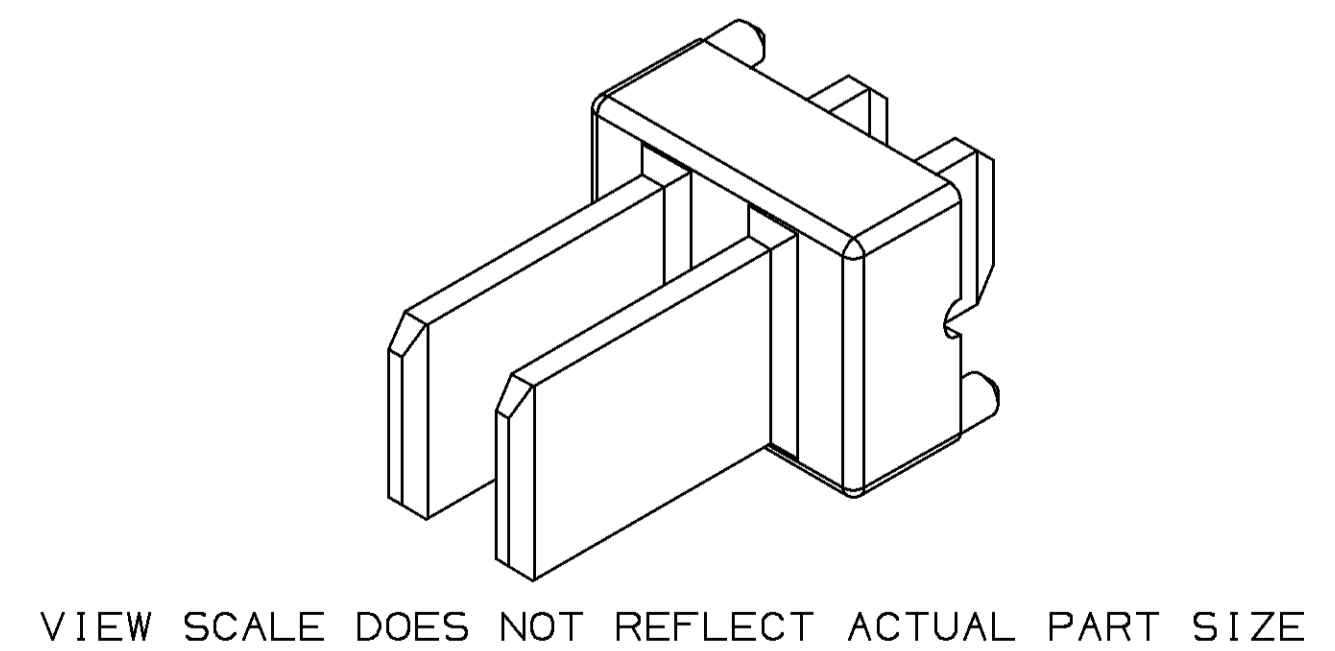
DATE	SYM	REVISION RECORD	AUTH	DR	CK
15MY00	F4	CLEARED REVISION COLUMN;			
		REDRAWN TO PD & 4X(0.825 ±0.035) WAS 4X 0.825	200802	ECB	MMVA



PART NO
12191899

NOTES

- UNLESS OTHERWISE SPECIFIED AND/OR INDICATED: DIMENSIONS ARE TO FACE OF VIEW SHOWN AND AUTOMATICALLY ROUNDED BY COMPUTER FOR INSPECTION (SEE MATH MODEL FOR PRECISE DIMENSIONS). FOR ALL OTHER DIMENSIONS NOT SHOWN BUT REQUIRED FOR TOOL BUILD, SEE MATH MODEL FOR PRECISE TOOL PATH DATA.
- MATING COMPONENTS OR EQUIVALENT: CONNECTOR ASSEMBLY 15304601
- AFTER INSERT MOLDING, THE SOLDER END OF THE BLADES MUST BE READILY SOLDERABLE WITH NO OTHER PREPARATION THAN AN APPLICATION OF ROSIN BASE FLUX. READILY SOLDERABLE MEANS THAT WHEN THE BLADES ARE DIPPED INTO MOLTEN TIN/LEAD SOLDER 63/37 AT A TEMP OF 260°C ±5°C AT A RATE OF 1 ±0.25 INCH/SEC, AND A DWELL TIME OF 3 ±0.5 SEC. VISUAL EXAMINATION AT 10X POWER SHALL DETERMINE THAT A MINIMUM OF 95% COVERAGE OF TEST SURFACE EXISTS.
- BLADES MUST WITHSTAND MINIMUM 60N PUSHOUT FORCE PER EST-927.
- GATE VESTIGE SHALL NOT EXCEED 0.25 MM.



11) PROCESS SENSITIVE DIMENSION	
DIMENSIONS ENCLOSED IN () INDICATE REFERENCE DIMENSIONS AND NO TOLERANCE LIMITS ARE ESTABLISHED	
DIMENSIONAL RANGE	
FROM	TO
0	> 20
> 20	> 30
> 30	> 70
> 70	> 100
> 100	> 1000
TOLERANCE UNLESS OTHERWISE SPECIFIED	
±0.15 ±0.2 ±0.3 ±0.4 ±0.5	
ANGULAR TOLERANCE ± 2°	

PART DRAWING		THIRD ANGLE PROJECTION	
Unigraphics			
CODE NO	QC	METRIC	
6900		DIMENSIONS ARE IN MILLIMETERS UNLESS OTHERWISE SPECIFIED	
DWG DATE	23JL96		
SCALE	5:1	DES	
REFERENCE NO	001	DRMIKE ROMERO	23JL96
		CKW. TURNBULL	23JL96
		APPR V. BANCROFT	29JL96
		VOL CM ³	0.299
MATERIAL SPEC		SEE DRAWING	
NAME		COUPLING 2M M/P 480,630 STRIP 1ML	
PART NUMBER		12191899	
SIZE		A1	