

D  
H  
G  
F  
E  
D  
C  
B  
A

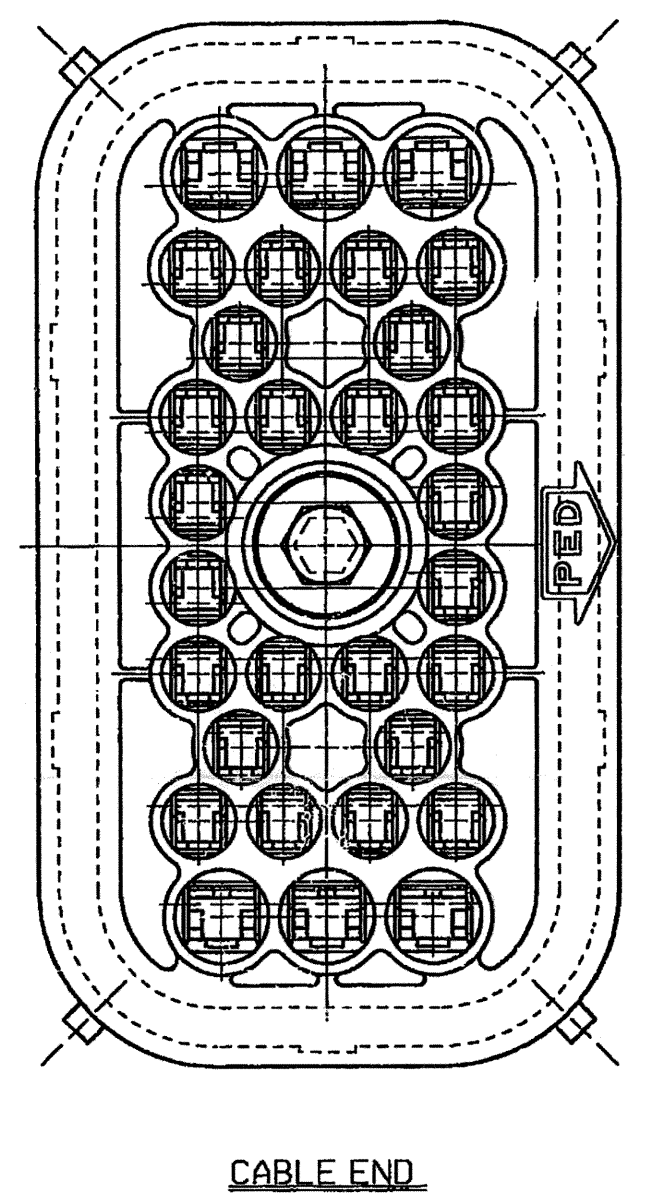
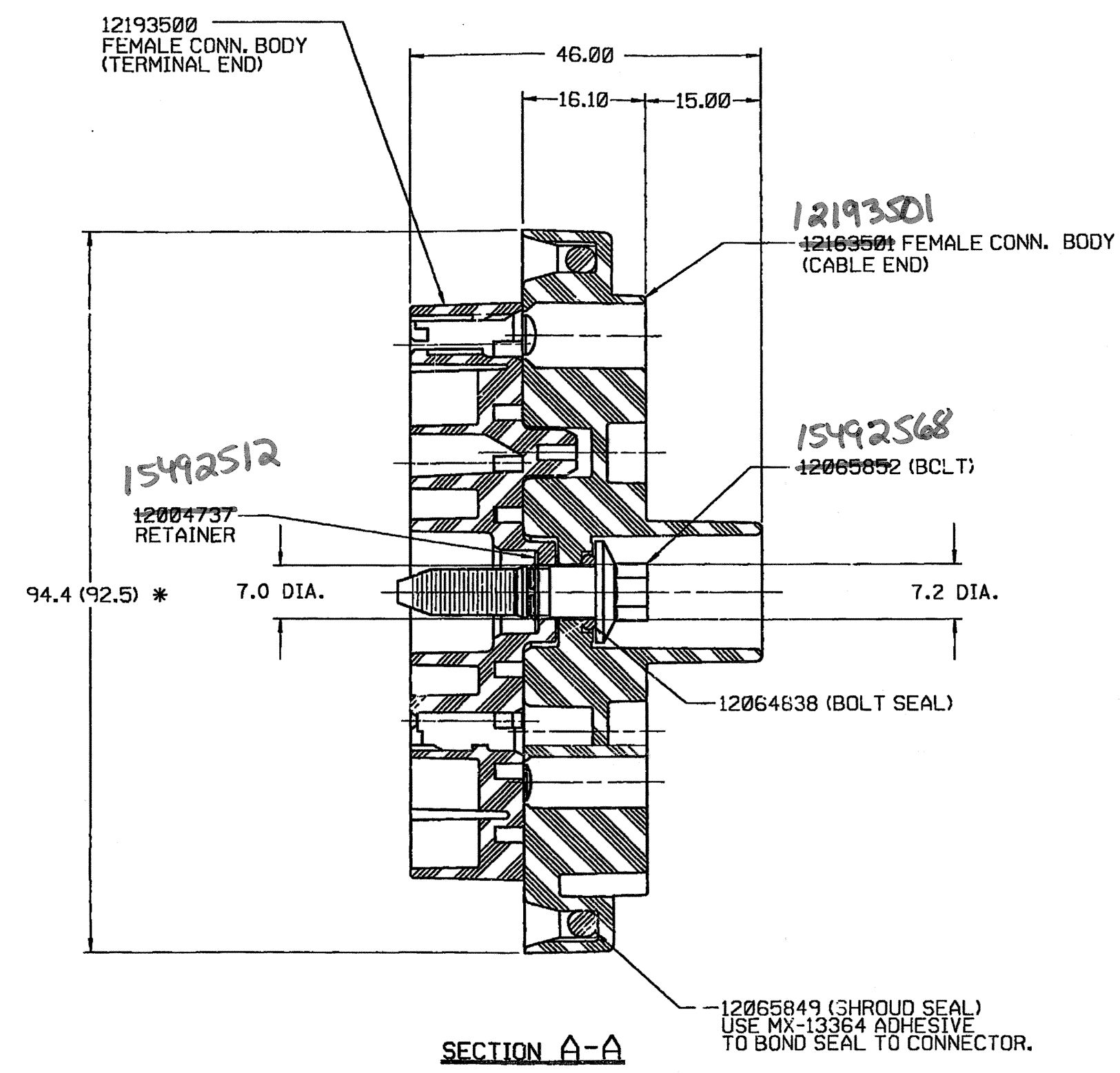
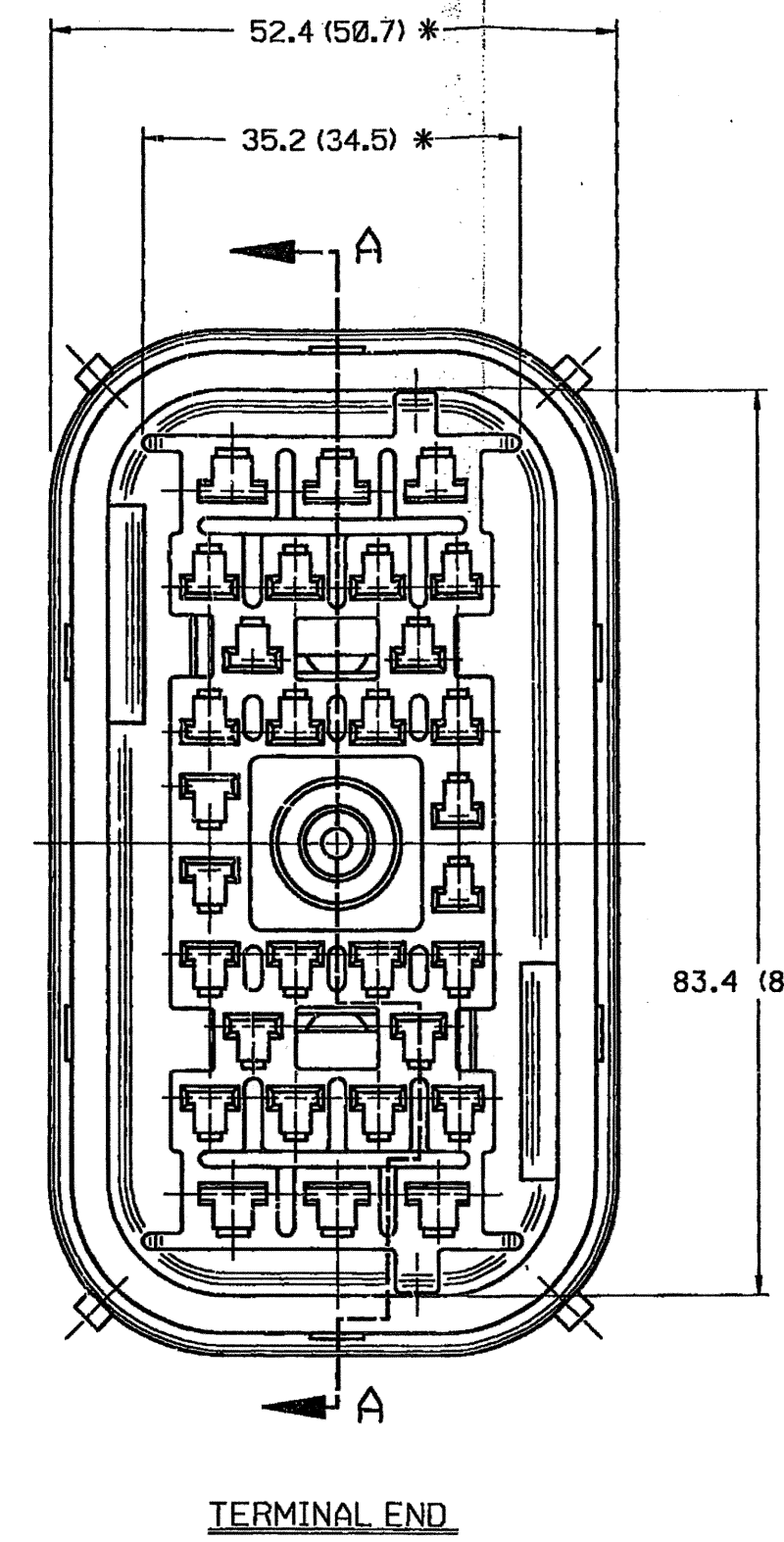
DO NOT SCALE  
8 7 6 5 4 3 2 1

PART NO. 1219 3502

PART NO. 1219 3502

DATE	SYM	REVISION RECORD	AUTHORITY	DR	CK
25JUL95	A	RELEASED	950005	TEB	TEB
7/13/05 02					
UPDATED 3 PW.					
270060					

**TEMPORARY PRODUCTION PRINT**  
 CNL 270060  
 APPROVED BY [Signature] DATE 7/13/05  
 APPROVED BY [Signature] DATE 7/13/05



- NOTES —
1. THIS ASSEMBLY IS TO BE BOLTED TO 12065844 CONNECTOR WITH A TORQUE ON THE BOLT OF 5.6 NM TO 7.9 NM.
  2. RETAINER MUST WITHSTAND A MINIMUM FORCE OF 890 N APPLIED AXIALLY TO THE THREADED END OF THE BOLT.
  3. THIS PART ACCEPTS 12066050 SECONDARY LOCK COMB OR EQUIVALENT.
  4. THIS PART MATES WITH TO 12193504 SHROUD.
  5. THIS PART IS NOT CONTROLLED FOR AUTOMATIC FEEDING.
  6. THE BOLT IS TO BE FREE TO TURN AFTER ASSEMBLY.
  7. TERMINAL RETENTION IS TO BE 67.0 N.
  8. WHEN PARTS ARE SHIPPED THEY MUST BE PACKED IN PLASTIC LINED CONTAINERS.
  9. CAVITIES A1, A2, A3, K1, K2, K3, TO ACCEPT TERMINAL 12048450 OR EQUIVALENT. ALL OTHER CAVITIES TO ACCEPT 12034454 OR EQUIVALENT TERMINAL.
  10. \*M\* MINIMUM ALLOWABLE DIMENSION DUE TO BOW.
  11. SEALING CODE 3.

UPDATE TO  
 NEW DELPHI  
 PRINT  
 STANDARD.

PIED/INSTRON		FILE SPEC: 7/13/05/02	25-JUL-1995 17:53
THIRD ANGLE PROJECTION		METRIC	
DIMENSIONS ARE IN MILLIMETERS UNLESS OTHERWISE SPECIFIED.		TOLERANCE UNLESS OTHERWISE SPECIFIED:	
CODE NO. 6901		DECIMAL: ANGULAR ± 2°	
O.C.-R-5111		ONE PLACE ± 0.3	
DATE 25JUL95		TWO PLACE ± 0.15	
SCALE 2:1	DR. TROY E. BEILSTEIN	DATE 25JUL95	
EST. NO.	CK. TROY E. BEILSTEIN	DATE 25JUL95	
REFERENCE NO. 12065850	APPR. R. Richards	DATE 7/13/05	
	APPR.	DATE	
MATERIAL SPEC. SEE DRAWING			
NAME ASM CONN 30F M/P MXD			
PART NO. 1219 3502			SIZE D