

NOTES: UNLESS OTHERWISE SPECIFIED  
 1. FOR USE WITH RG-174, 188, 316, OR EQUIVALENT CABLE.

2. MATERIAL SPECIFICATIONS:  
 INSULATOR: PTFE  
 RETAINER RING: BERYLLIUM COPPER  
 FERRULE: COPPER  
 ALL OTHER METAL PARTS: BRASS

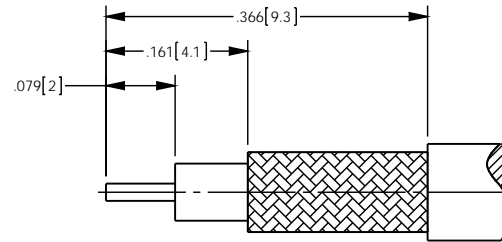
3. FINISH SPECIFICATIONS:  
 CONTACT: .000003 MIN THICK GOLD OVER .000050 MIN THICK NICKEL  
 ALL OTHER METAL: THIN GOLD OVER .000050 MIN THICK COPPER

4. ELECTRICAL SPECIFICATIONS:  
 IMPEDANCE: 50 OHMS  
 FREQUENCY RANGE: DC TO 6.0 GHz  
 VSWR: 1.20 MAX TO 3.0 GHz

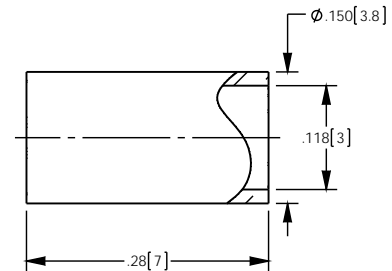
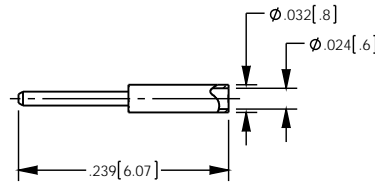
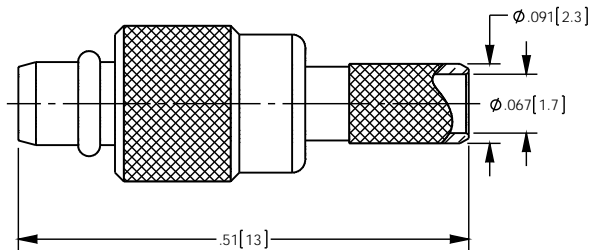
5. CONTACT AND FERRULE SHIPPED LOOSE

6. CRIMP FERRULE (.128[3.25] HEX) AND CONTACT PIN TO SOLDER.

REV	DESCRIPTION	BY DATE	APPD
A	ER059185	JF 08/11/15	DCAM



RECOMMENDED CABLE STRIPPING DIM'S



CATALOG P/N: 1310A204M

PER ASME Y14.5M-1994 UNLESS OTHERWISE SPECIFIED, DIMENSIONS ARE IN INCHES (MM) TOLERANCES: DECIMAL: XX [XX] ± .01 [0.3] XXX [XXX] ± .005 [0.13] XXXX [XXXX] ± .0005 [0.013] ANGLES: ± 2° SCALE: 6:1				 by WINCHESTER Winchester Electronics Corporation 199 Park Road Ext Suite 104 Middlebury, Connecticut, 06762		
CUSTOMER SALES DRAWING			THIRD ANGLE		MMCX CRIMP PLUG (FOR RG-174, 188A, 316) (RoHS)	
DRAWN	DATE	APPROVED	DATE	REV	QTY	REV
JF	07/16/2015	JF	08/11/2015	A	1	1
APPROVED	DATE	APPROVED	DATE			
DCAM	07/16/2015	XXX	XX/XX/XX			