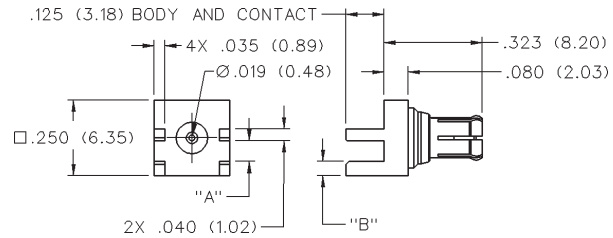
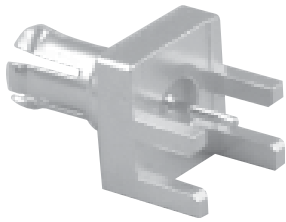
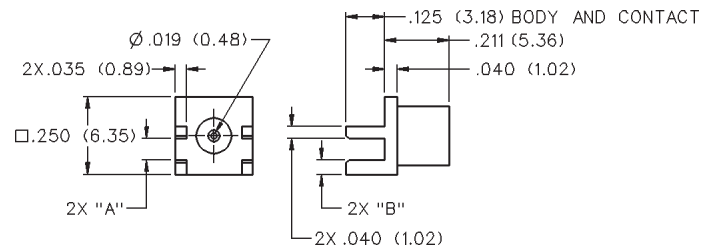


End Launch Plug Receptacle



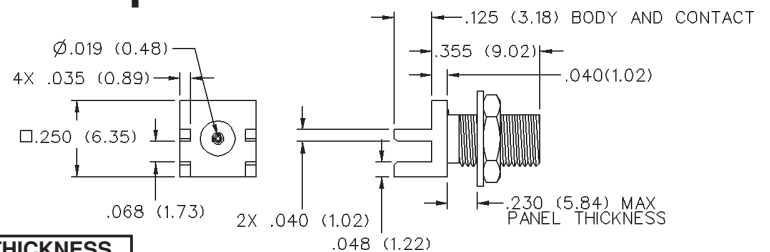
| GOLD PLATED | NICKEL PLATED | BOARD THICKNESS | "A" | "B" |
|--------------|---------------|-----------------|-------------|-------------|
| 133-3801-841 | 133-3801-846 | .062 (1.57) | .068 (1.73) | .048 (1.22) |
| 133-3801-851 | 133-3801-856 | .042 (1.07) | .048 (1.22) | .068 (1.73) |

End Launch Jack Receptacle - Round Contact



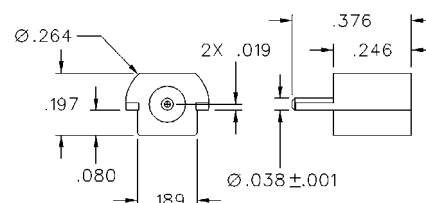
| GOLD PLATED | NICKEL PLATED | BOARD THICKNESS | "A" | "B" |
|--------------|---------------|-----------------|-------------|-------------|
| 133-3701-801 | 133-3701-806 | .062 (1.57) | .068 (1.73) | .048 (1.22) |
| 133-3701-811 | 133-3701-816 | .042 (1.07) | .048 (1.22) | .068 (1.73) |

End Launch Bulkhead Jack Receptacle - Round Contact



| GOLD PLATED | NICKEL PLATED | BOARD THICKNESS |
|--------------|---------------|-----------------|
| 133-3701-821 | 133-3701-826 | .062 (1.57) |

Surface Mount End Launch Jack Receptacle



| GOLD PLATED | PACKAGING OPTIONS |
|--------------|-----------------------------|
| 133-3711-801 | Stock |
| 133-3711-802 | Tape and Reel 1000 pcs/reel |

Recommended Land Pattern figure 23 page 203.