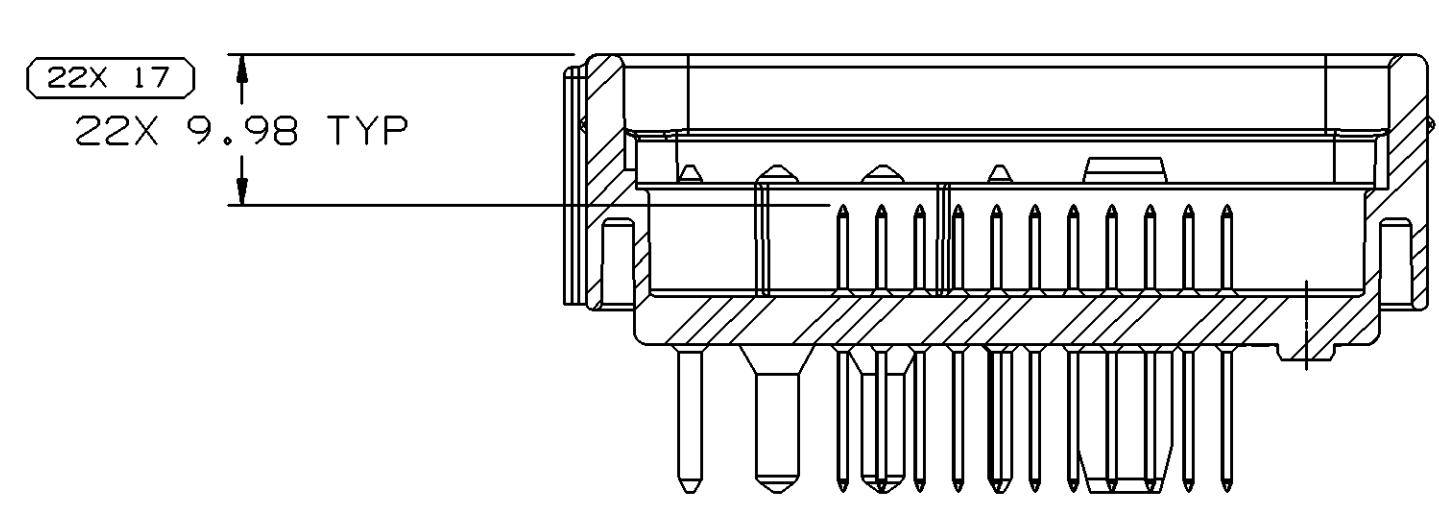
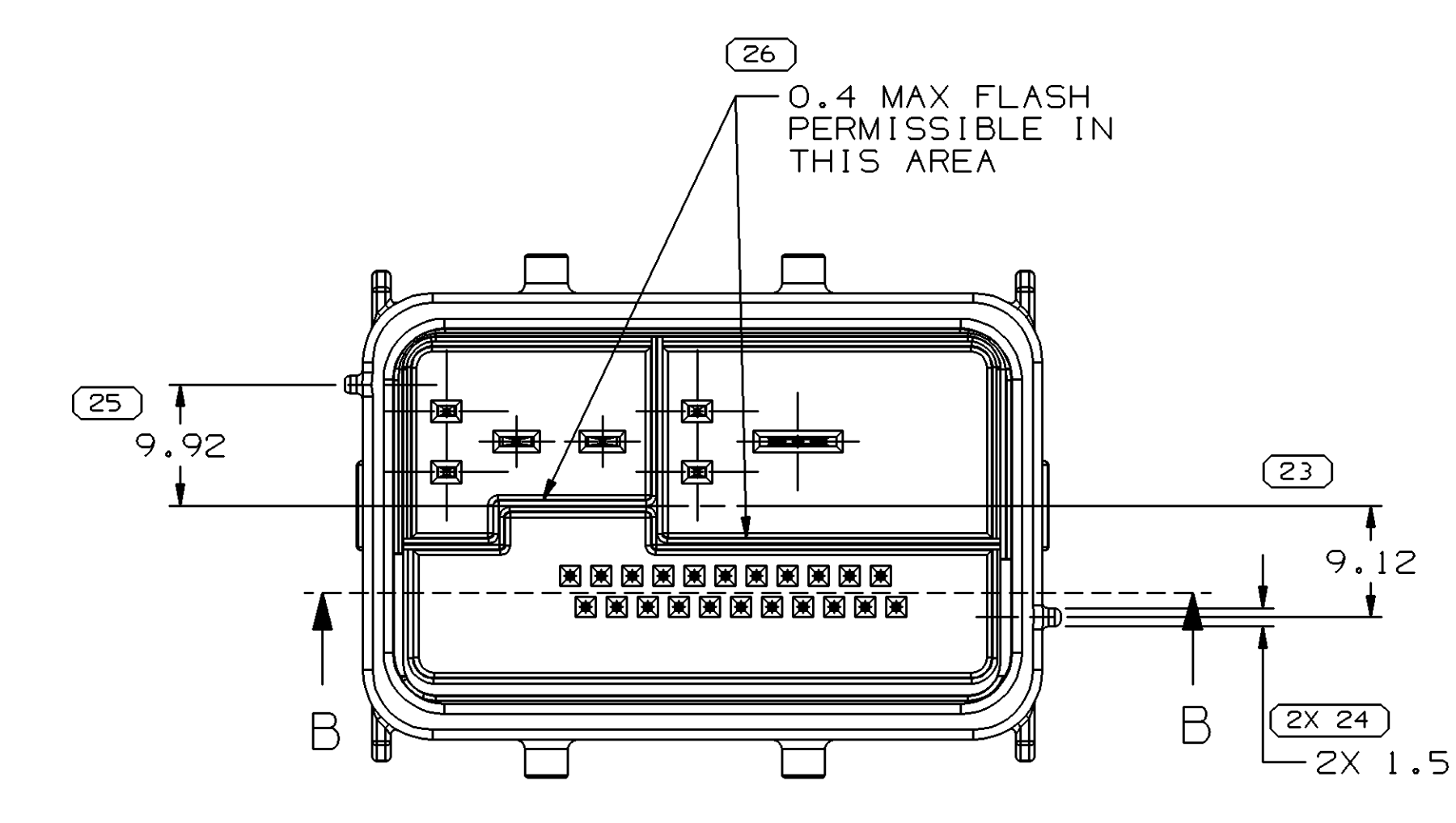
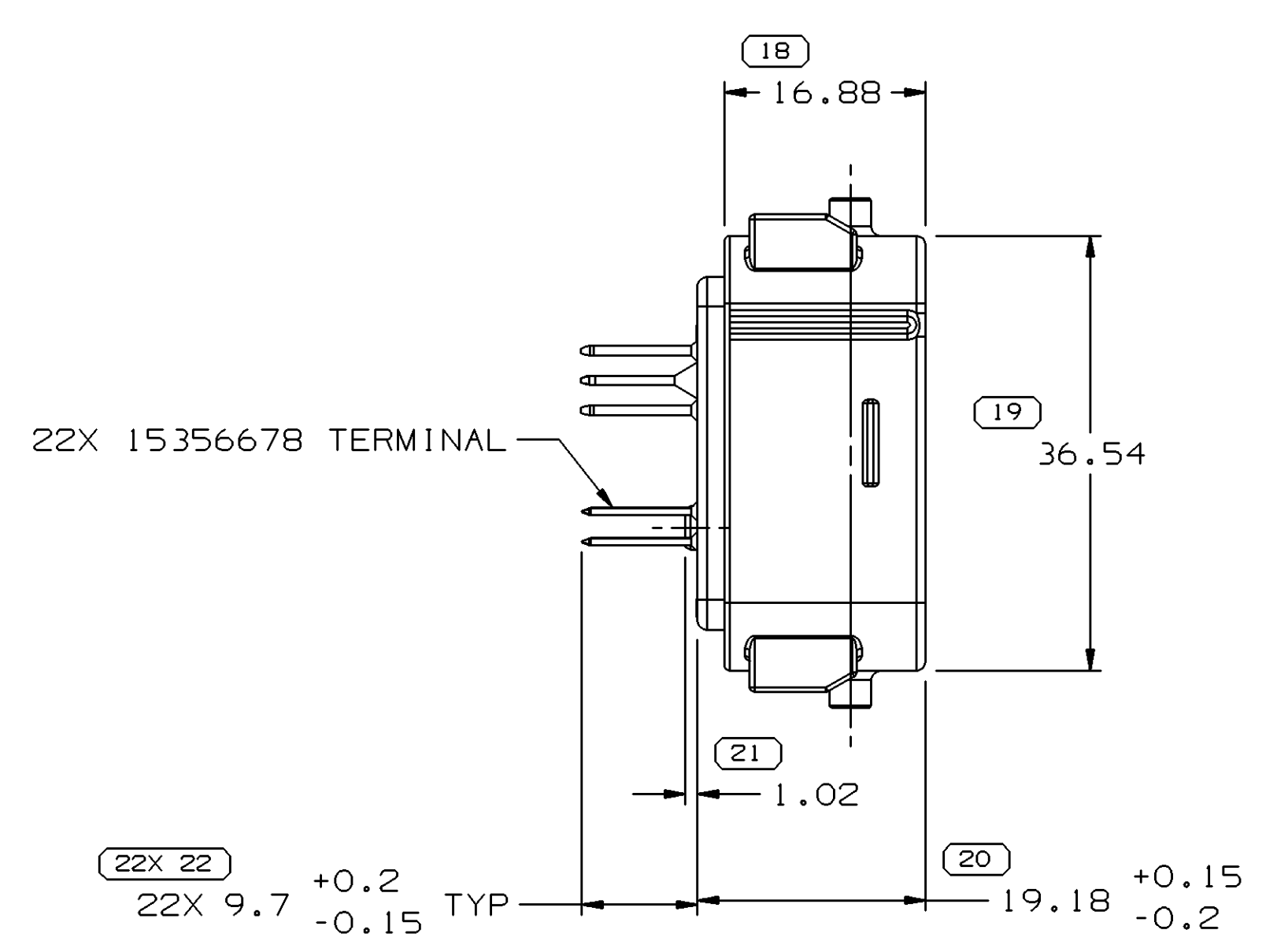
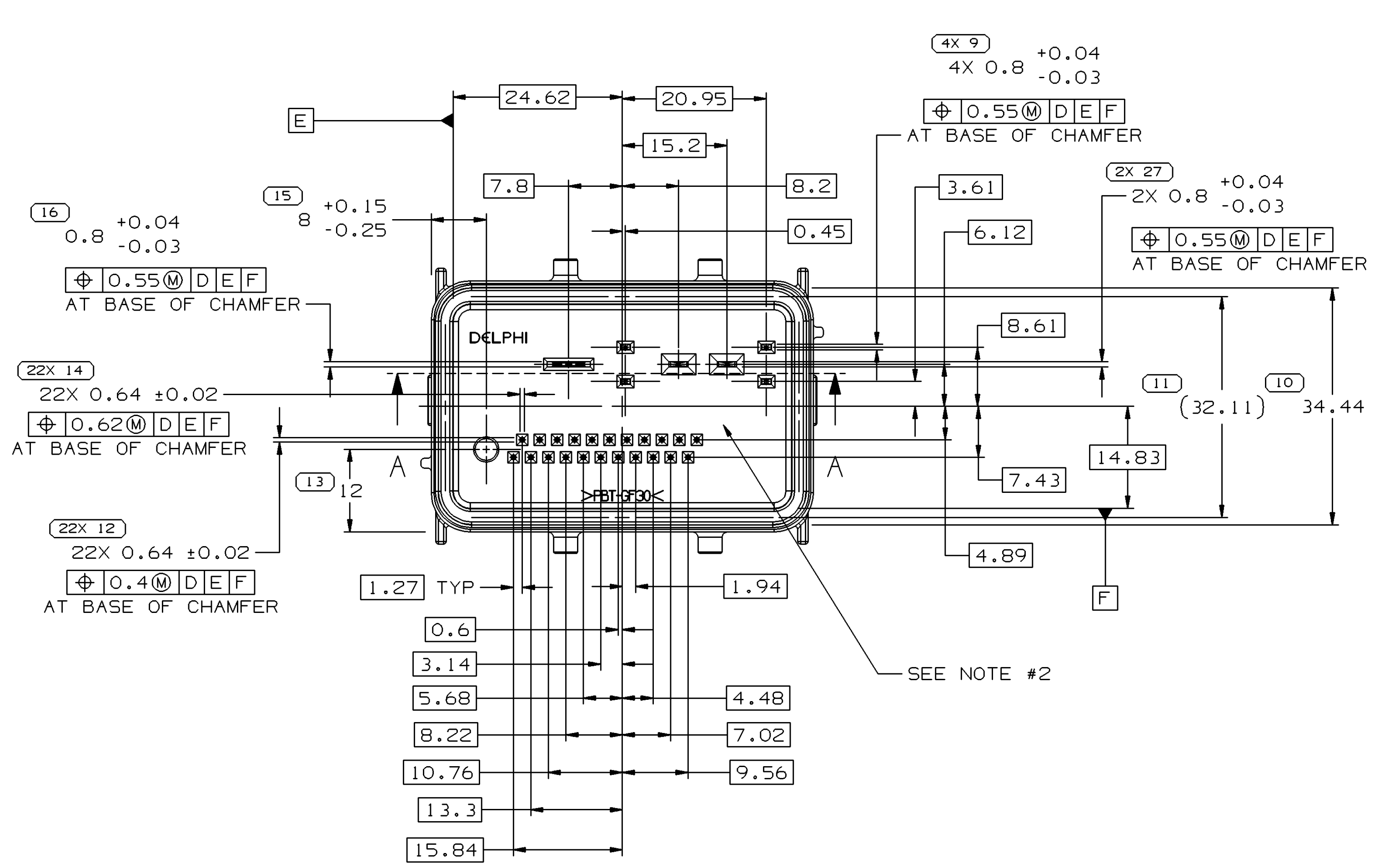
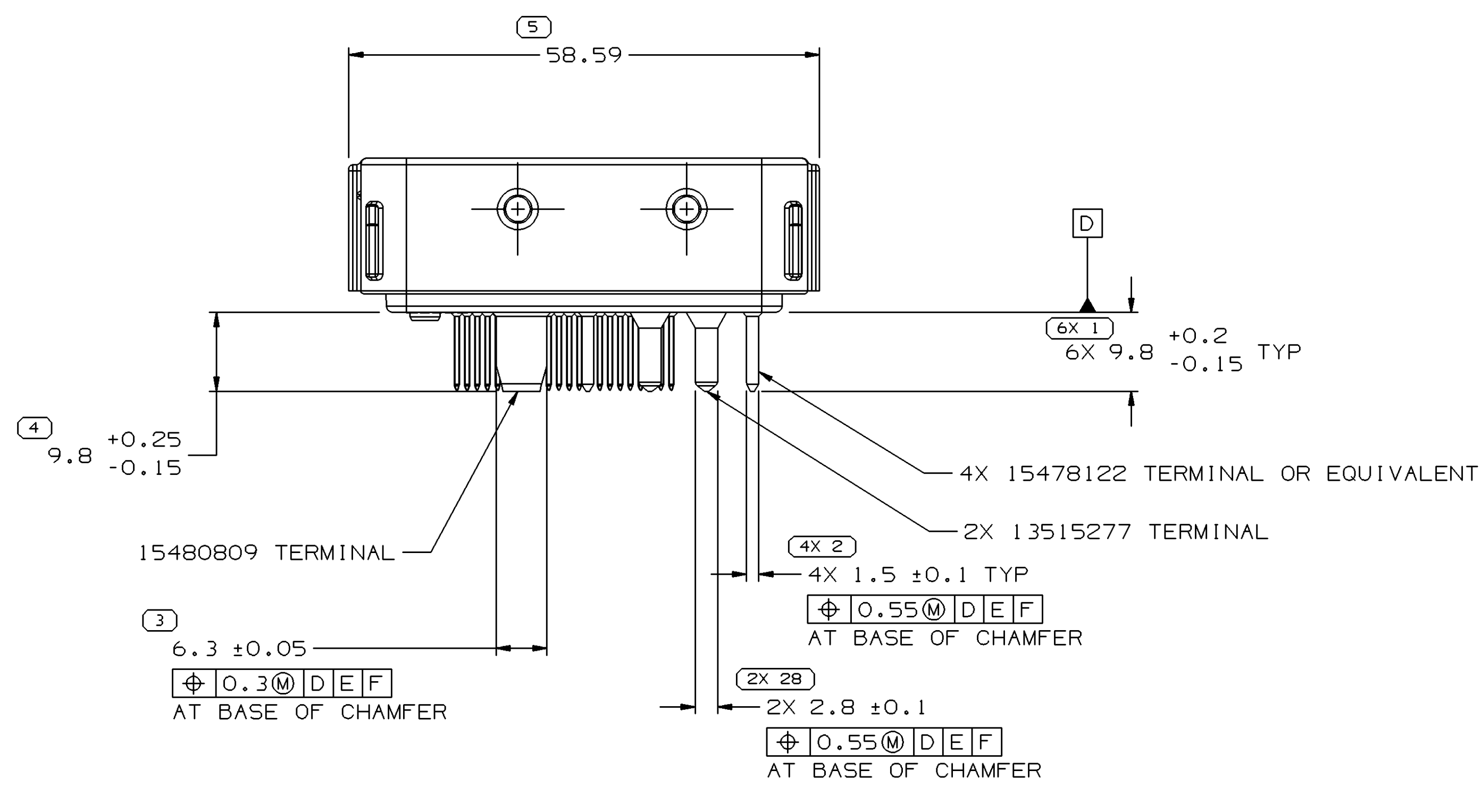
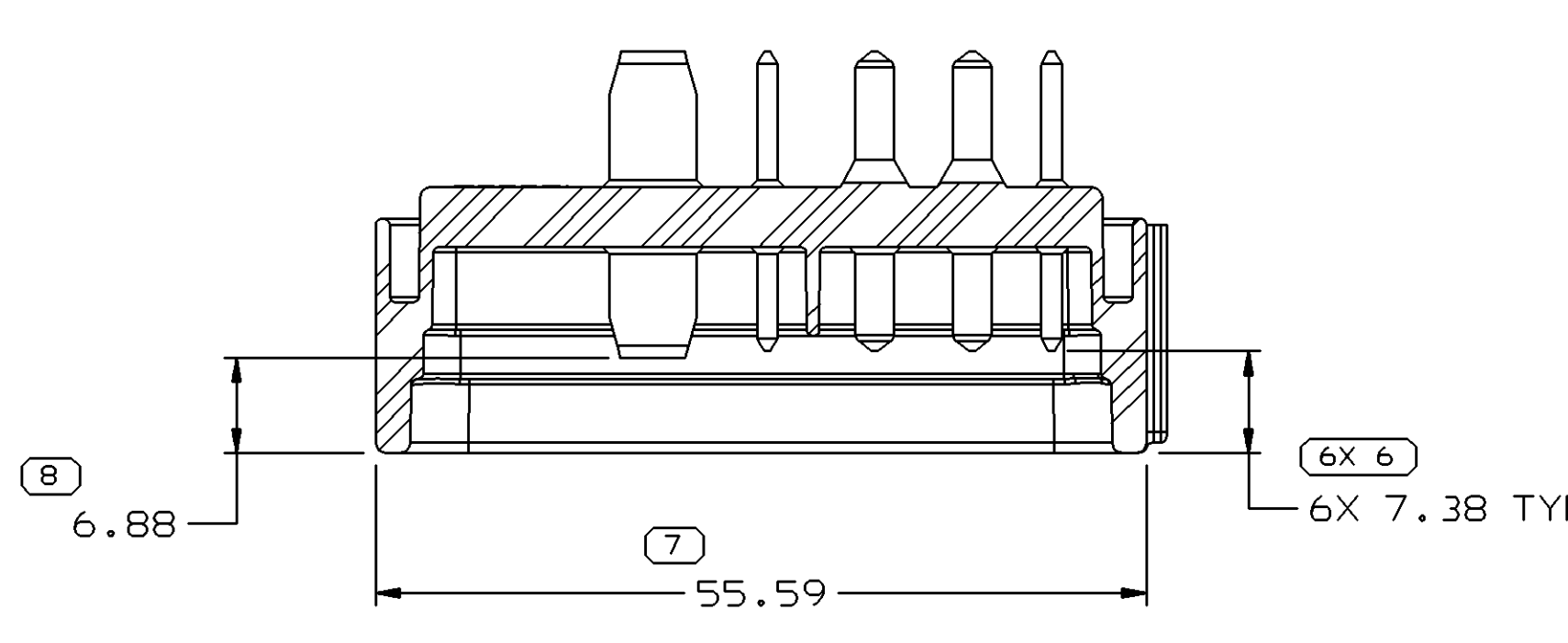


SYMBOL DEFINITION		MISSING SYMBOLS	
A DIMENSION WITHOUT AN INSPECTION REPORT SYMBOL DOES NOT REQUIRE INSPECTION. IT MAY BE CONTROLLED ON THE INDIVIDUAL COMPONENT DRAWING.	TOTAL NO OF INSPECTIONS REQUIRED	NO MISSING SYMBOL NUMBER	
	131		
	LAST NO. USED	28	

DATE	STG	REV	W/P	CHK	ZONE	REVISION HISTORY		AUTH	DR	APVD	REV
24NO04	R	01	-	-		RELEASED		261645	RH	RH	SM



SECTION B-B



SECTION A-A

NOTES

- UNLESS OTHERWISE SPECIFIED AND/OR INDICATED: DIMENSIONS ARE TO FACE OF VIEW SHOWN AND AUTOMATICALLY ROUNDED BY COMPUTER FOR INSPECTION (SEE MATH MODEL FOR PRECISE DIMENSIONS). FOR ALL OTHER DIMENSIONS NOT SHOWN BUT REQUIRED FOR TOOL BUILD, SEE MATH MODEL FOR PRECISE TOOL PATH DATA.
- REFERENCE MATING COMPONENTS OR EQUIVALENT: CONNECTOR 15356666
- JULIAN DATE AND YEAR DESIGNATION TO BE MOLDED IN.
- MATERIAL RECYCLING CODE PER ISO 11469. (2,3)X(0,1) CHARACTERS AS SHOWN TO BE LOCATED ON ANY EXTERIOR SURFACE.
- CONNECTOR MEETS THE TESTING REQUIREMENTS OF SAE/USCAR-2 REVISION 2 (AUGUST 2000).
- (1,5)X(0,5) DELPHI CORPORATE BRAND TO BE LOCATED ON ANY EXTERIOR SURFACE, PREFERABLY VISIBLE AT FINAL ASSEMBLY. OPTIONAL CONSTRUCTION TO BE "PED".

FROM	TO	TOLERANCE UNLESS OTHERWISE SPECIFIED	CHART
> 0	> 20	±0.1	1
> 20	> 30	±0.15	2
> 30	> 70	±0.2	3
> 70	> 100	±0.3	4
> 100	> 150	±0.4	5
> 150	> 200	±0.5	6
> 200	> 250	±0.6	7
> 250	> 300	±0.8	8
> 300	> 400	±1.0	9
10, 15, 20, 25, 30, 35, 40, 45, 50, 55, 60, 65, 70, 75, 80, 85, 90, 95, 100, 105, 110, 115, 120, 125, 130, 135, 140, 145, 150, 155, 160, 165, 170, 175, 180, 185, 190, 195, 200, 205, 210, 215, 220, 225, 230, 235, 240, 245, 250, 255, 260, 265, 270, 275, 280, 285, 290, 295, 300, 305, 310, 315, 320, 325, 330, 335, 340, 345, 350, 355, 360, 365, 370, 375, 380, 385, 390, 395, 400		±0.1	10

DELPHI	
DELPHI PACKARD ELECTRIC SYSTEMS WARREN, OH	
DR ROBERT HURD	DATE 24NO04
APVD1 ROBERT HURD	24NO04
APVD2 ROBERT HURD	24NO04
APVD3 SEAN MILLER	08DE04
APVD4	
APVD5	
SUBSTANCES OF CONCERN AND RECYCLED CONTENT PER DELPHI 10949001	
MATERIAL M4698030 PLAS PBT GF 30 BLK	
DRAWING NAME: ASM CONN 29 M GT 150 280 M/P 630 MIC/P 064 SLD	
DRAWING NUMBER: 13515278	
SIZE A0	SCALE 2:1
FRAME NO 1	SHEET NO 1 OF 1
TSB REV 1	W/P REV 01