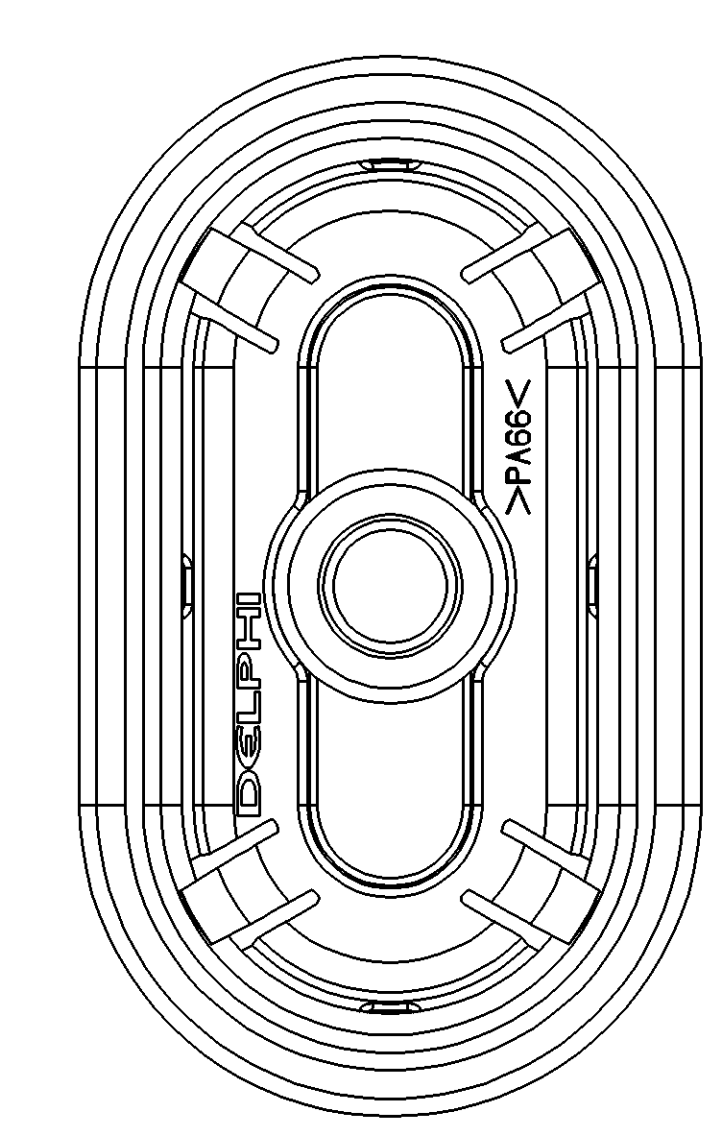
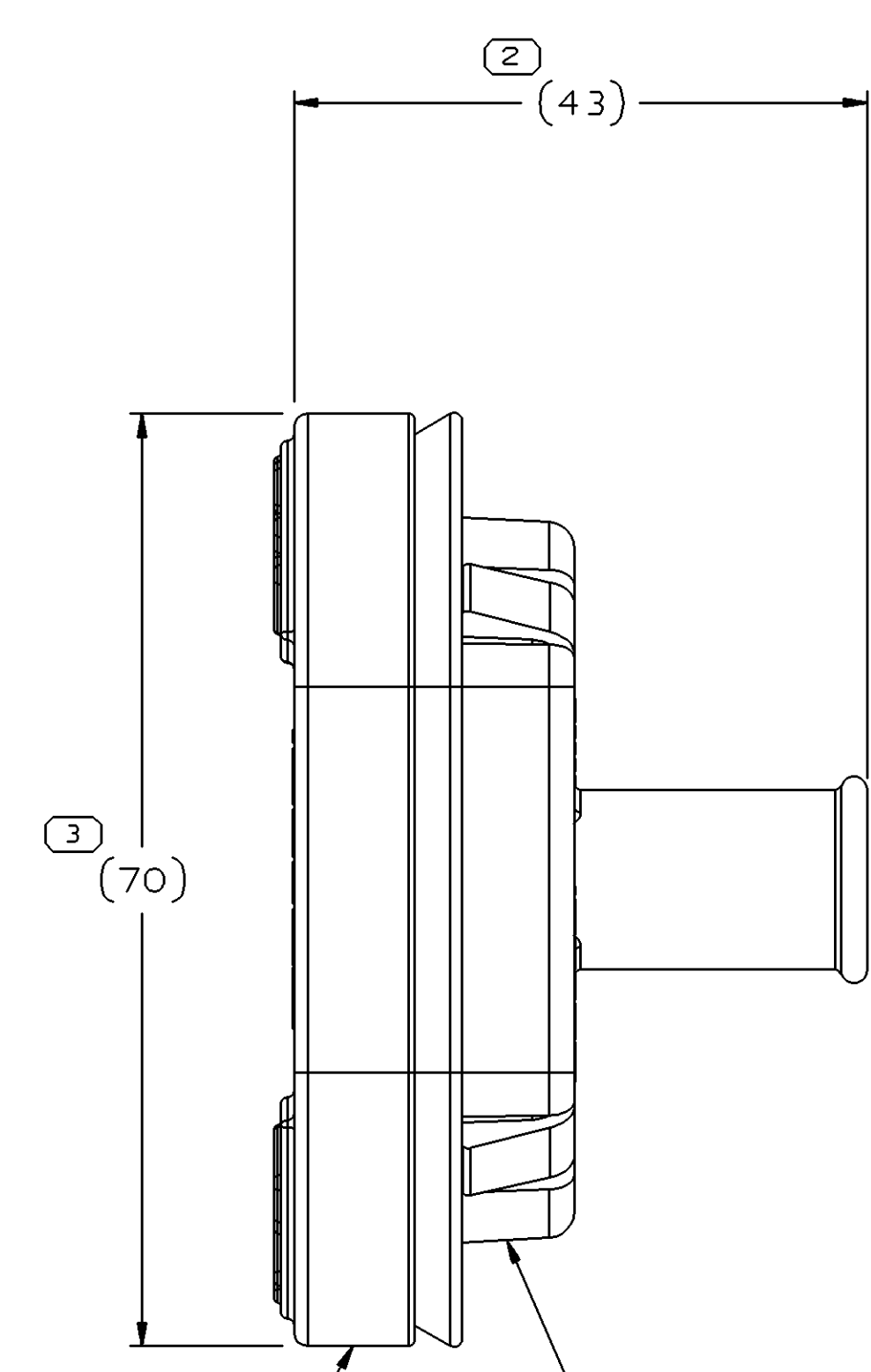
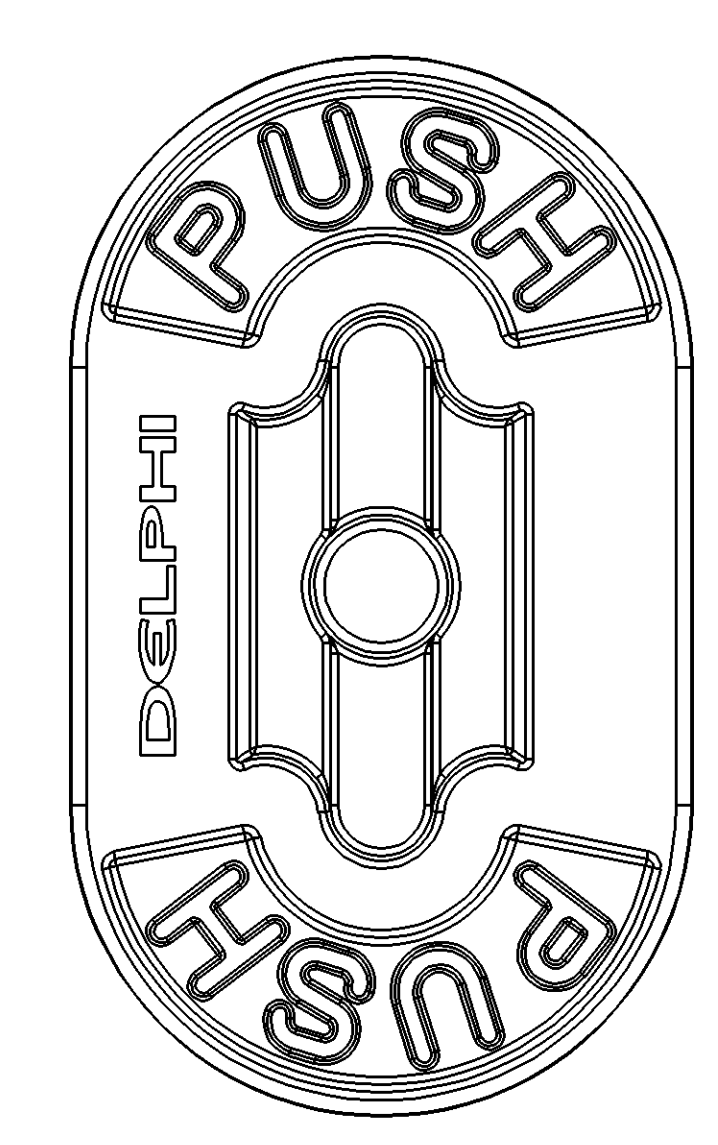
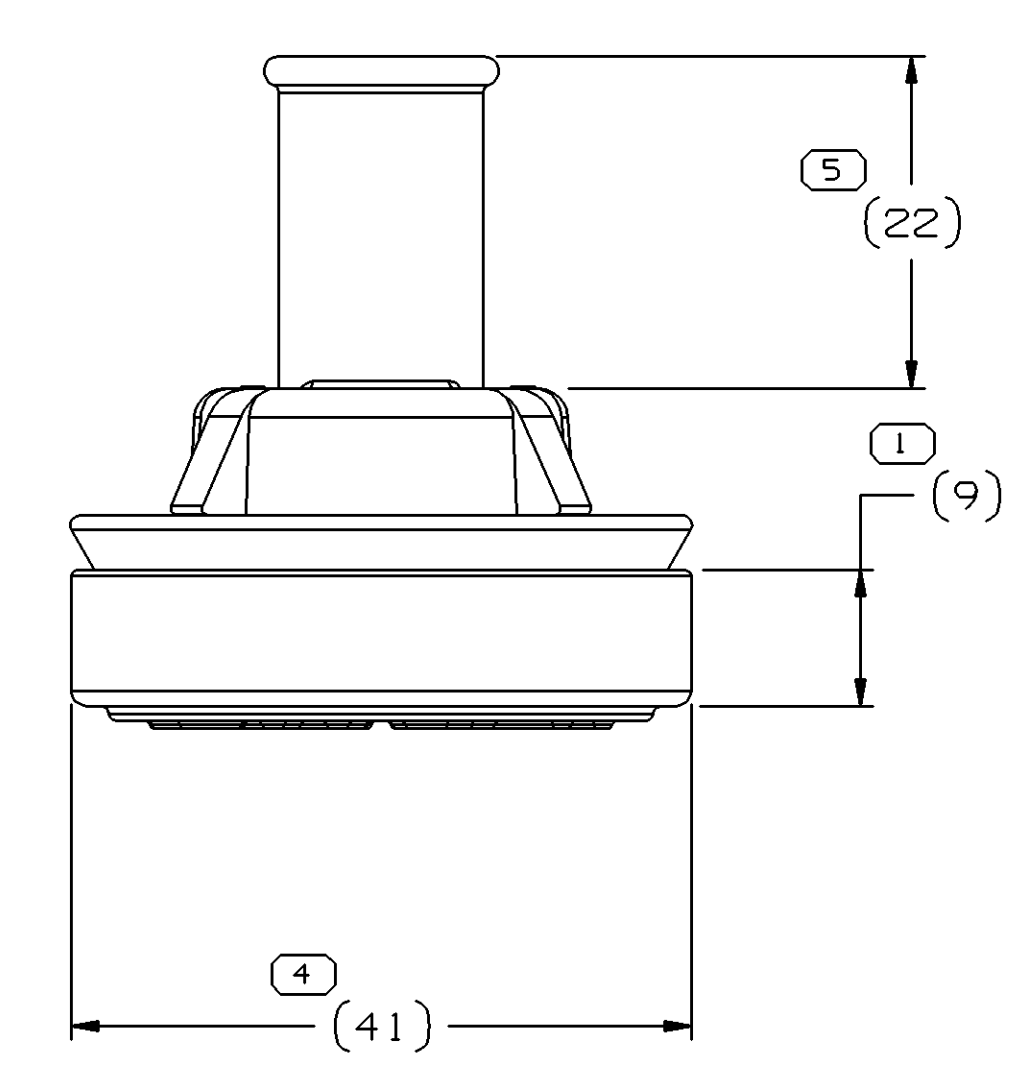
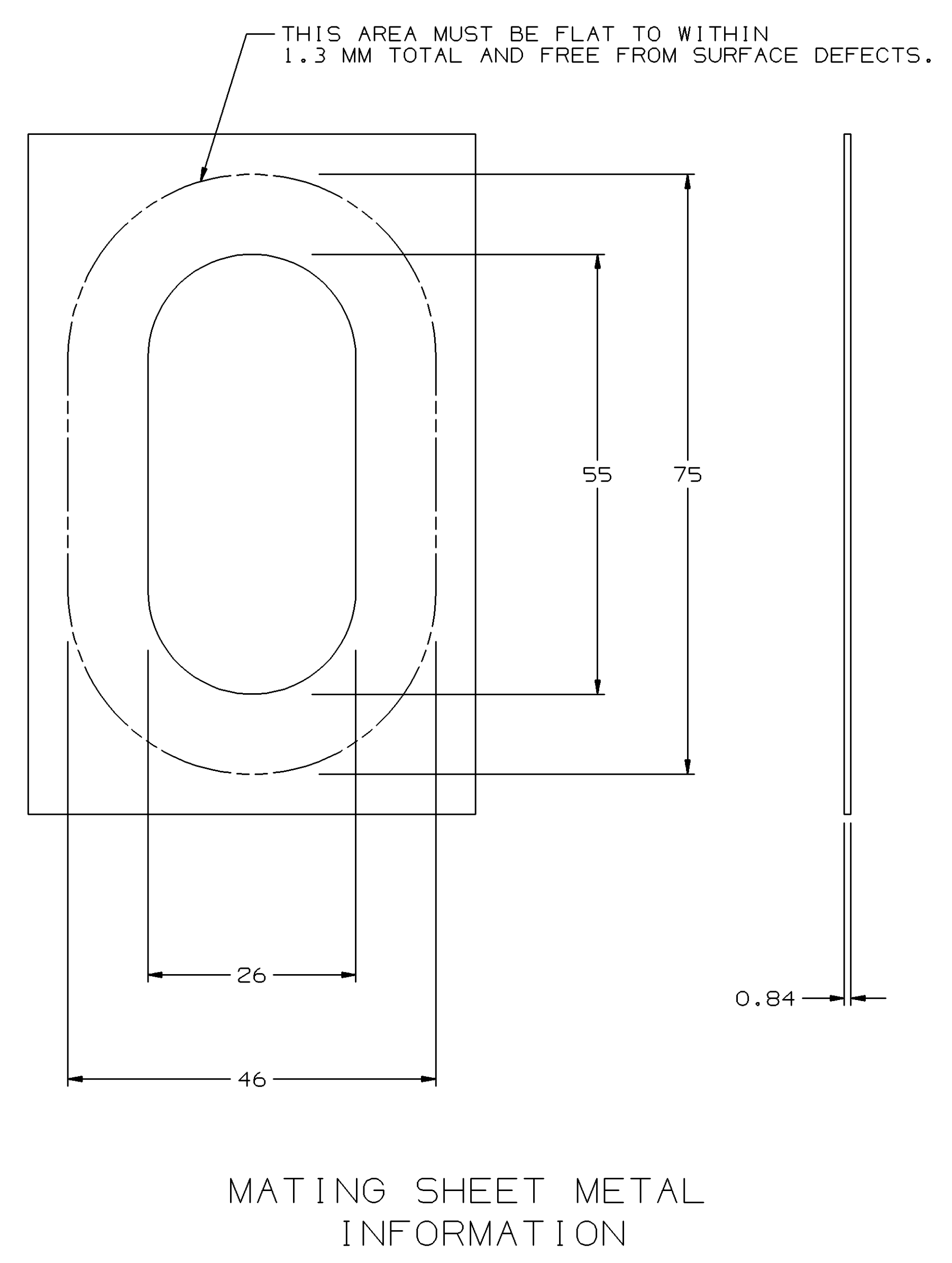
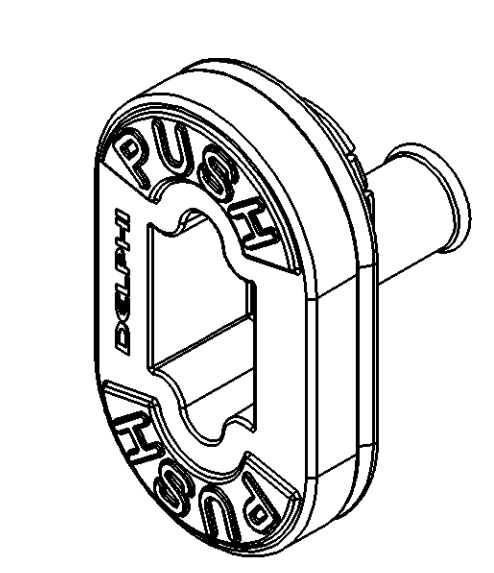


SYMBOL DEFINITION		MISSING SYMBOLS	
A DIMENSION WITHOUT AN INSPECTION REPORT SYMBOL DOES NOT REQUIRE INSPECTION. IT MAY BE CONTROLLED ON THE INDIVIDUAL COMPONENT DRAWING.	TOTAL NO OF INSPECTIONS REQUIRED	NO MISSING SYMBOL NUMBER	
	5		
	LAST NO. USED		
	5		

DWO STATUS				REVISION HISTORY				AUTH	DR	APVD	APVD
DATE	STG	REV	N/P	CHG	ZONE						
15AP05	R	01	-	-		RELEASED		266309	ADK	ADK	JS



GROM - SEE CHART RETAINER - SEE CHART

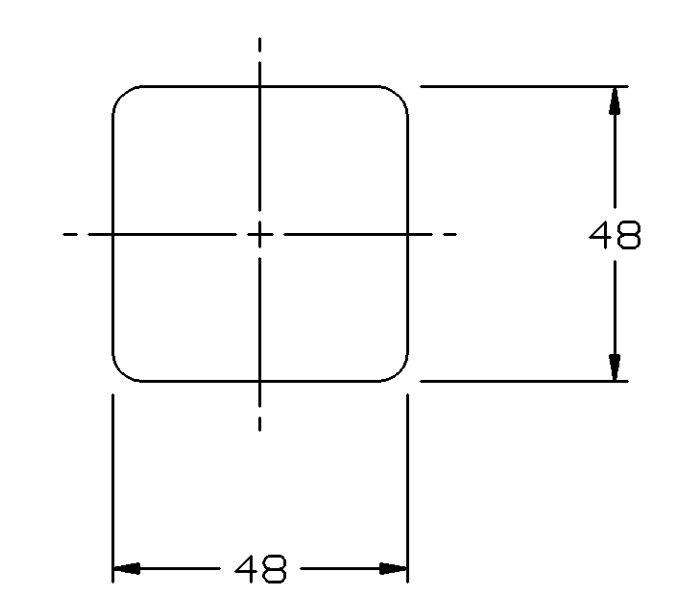


NOTES

- UNLESS OTHERWISE SPECIFIED AND/OR INDICATED:
DIMENSIONS ARE TO FACE OF VIEW SHOWN AND AUTOMATICALLY ROUNDED BY COMPUTER FOR INSPECTION (SEE MATH MODEL FOR PRECISE DIMENSIONS). FOR ALL OTHER DIMENSIONS NOT SHOWN BUT REQUIRED FOR TOOL BUILD, SEE MATH MODEL FOR PRECISE TOOL PATH DATA.

PROCESS NOTES

- MAXIMUM ALLOWABLE STRETCH DIMENSION: 48MM AS MEASURED IN THE FOLLOWING FASHION.



PART NO	GROM	RETAINER
13522733	13523000	13523001

DWO TYPE		PART DRAWING	
STYLE		DISTR CODE	D
VOLUME (COP)			
UNLESS OTHERWISE SPECIFIED			
THIS DOCUMENT IS IN ACCORDANCE WITH ASME Y14.5M-1994 AS MODIFIED BY THE DIMENSIONAL DIMENSIONS AND TOLERANCING ADDENDUM-2003. SEPARATE PATTERNING OF FEATURES MAY BE GIVEN SEPARATELY REGARDLESS OF DATUM REFERENCES.			
ALL DIMENSIONS ARE IN MILLIMETERS			
REFERENCE			

DELPHI
DELPHI PACKARD ELECTRIC SYSTEMS
WARREN, OH

DR	DATE
APVD1 ADAM D. KIMBERLIN	15AP05
APVD2 ADAM D. KIMBERLIN	15AP05
APVD3 J. SVETTE	15AP05
APVD4	
APVD5	

SUBSTANCES OF CONCERN AND RECYCLED CONTENT PER DELPHI 10949001

MATERIAL SEC DRAWING

ALL DIMENSIONS ARE IN MILLIMETERS

DRAWING NAME: ASM GROM TAPE ON

DRAWING NUMBER: 13522733

SIZE: AO SCALE: 2:1 FRAME NO: 1 SHEET NO: 1 OF 1 TSTG REV: N/P DATE: 01

(N/A) PROCESS SENSITIVE DIMENSION		THIRD ANGLE PROJECTION		DO NOT SCALE	
DIMENSIONS ENCLOSED IN () INDICATE RETROFIT DIMENSIONS AND NO TOLERANCE LIMITS ARE ESTABLISHED		USE MATH DATA		UNSPRINGS	
FROM	TO	CHART	C		
> 0	> 25	> 60	> 80		
< 0	< 60	< 80	< 100		
TOLERANCE UNLESS OTHERWISE SPECIFIED					
±0.3	±0.5	±0.6	±0.75		
ANGULAR TOLERANCE 12°					