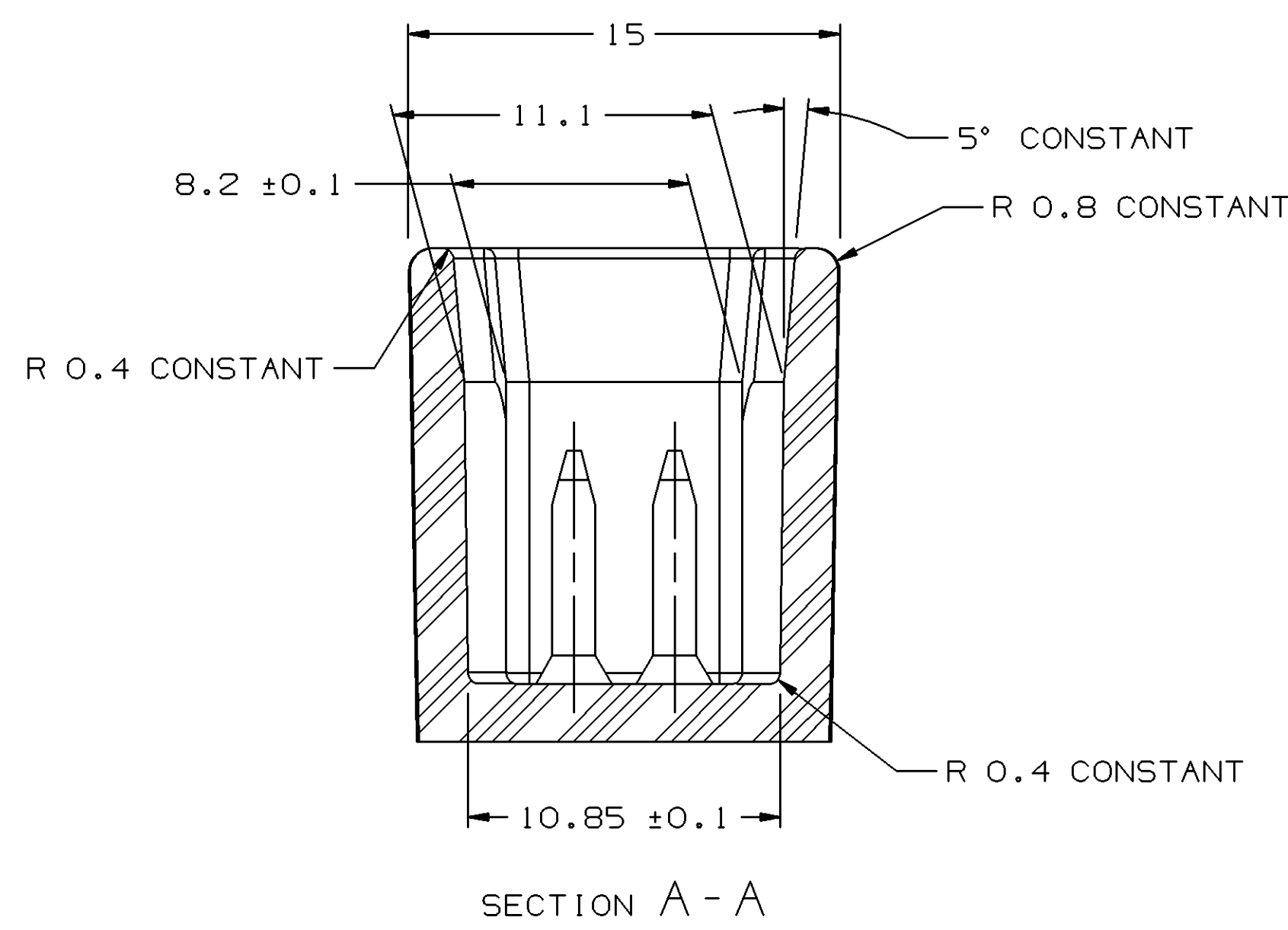
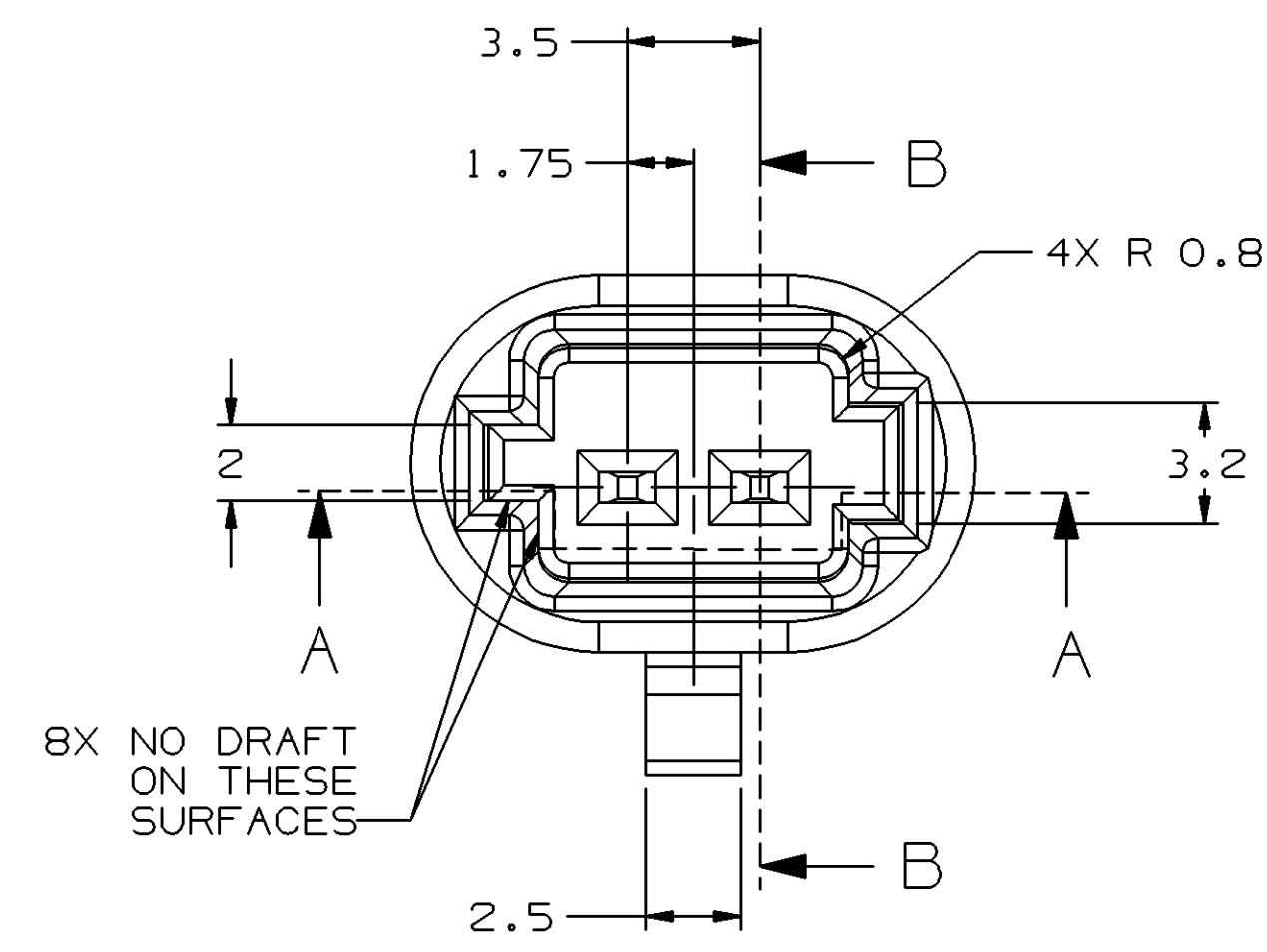


MATERIAL SPECIFICATIONS

RECOMMENDED
 BASE METAL - CDA-210, EXTRA SPRING TEMPER
 • TIN PLATING (WHERE APPLICABLE TO 125°C MAX CONTINUOUS USAGE):
 0.0050±0.0025 MM (200±100 μIN) ELECTROPLATED TIN.
 • USAGE OF PLATING TYPES OTHER THAN RECOMMENDED
 MUST BE APPROVED BY DELPHI PACKARD ELECTRIC
 SYSTEMS ENGINEERING.

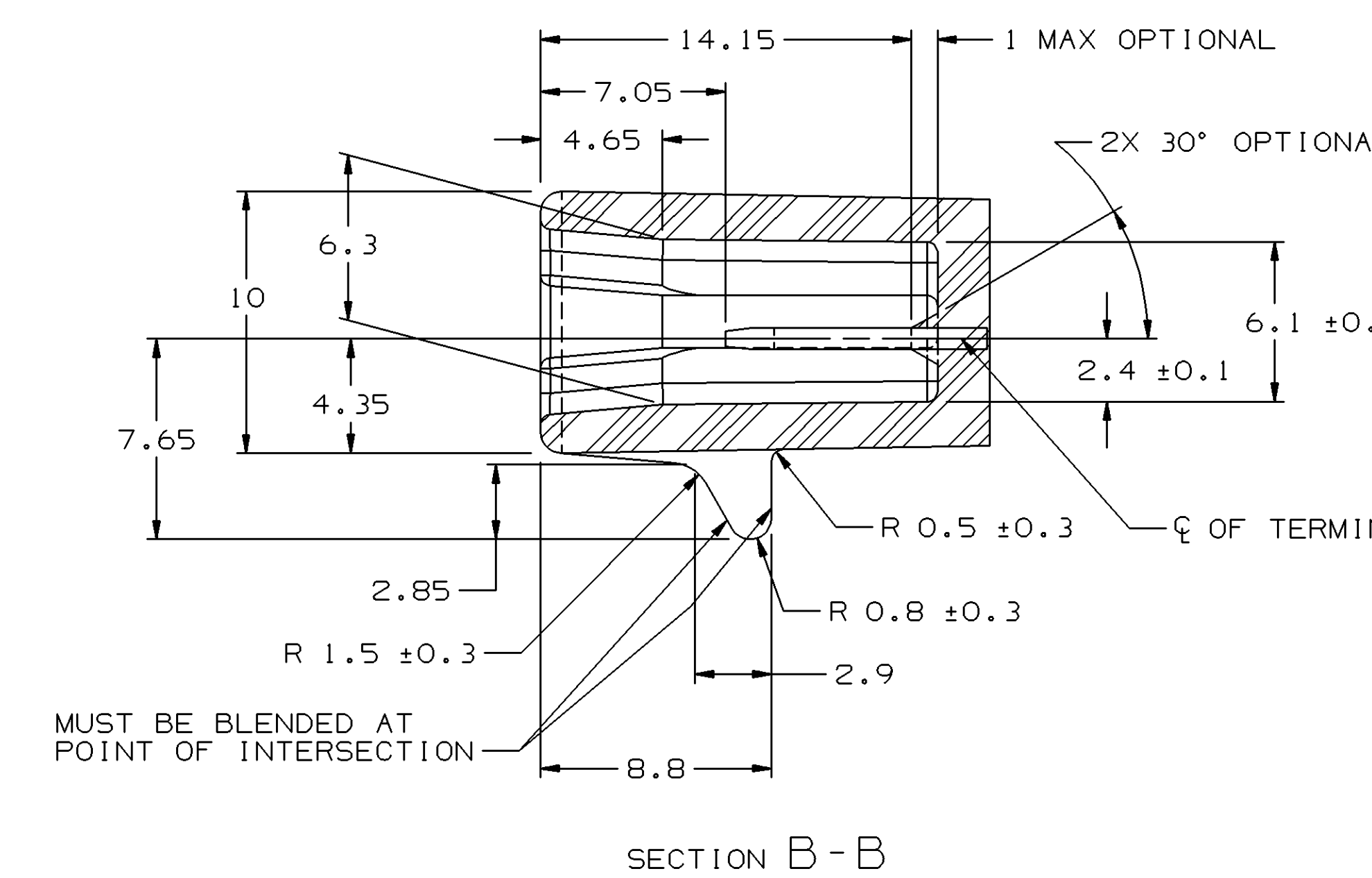
MINIMUMS
 ELECTRICAL CONDUCTIVITY - ≥28% IACS AT 20 °C. USE OF A
 MATERIAL WITH CONDUCTIVITY <28% IACS MUST BE APPROVED
 BY PACKARD ELECTRIC MATERIALS ENGINEERING.
 TENSILE STRENGTH - 430 - 480 MPa
 UNDERPLATING FOR TIN PLATING - FOR BASE MATERIALS CONTAINING 10% OR MORE ZINC,
 AN UNDERPLATE OF COPPER 0.0025 MM (100 μIN) MINIMUM THICK IS REQUIRED.
 PROCESSING LUBRICANT - ANY PROCESSING LUBRICANT REMAINING ON TERMINALS
 MUST NOT VARNISH OR DEGRADE THE ELECTRICAL PERFORMANCE OF THE
 CONNECTION UP TO A MAXIMUM TEMPERATURE OF 150°C. PROCESSING LUBRICANTS
 MUST BE APPROVED BY DELPHI PACKARD ELECTRIC SYSTEMS ENGINEERING.

MATING BLADE INFORMATION



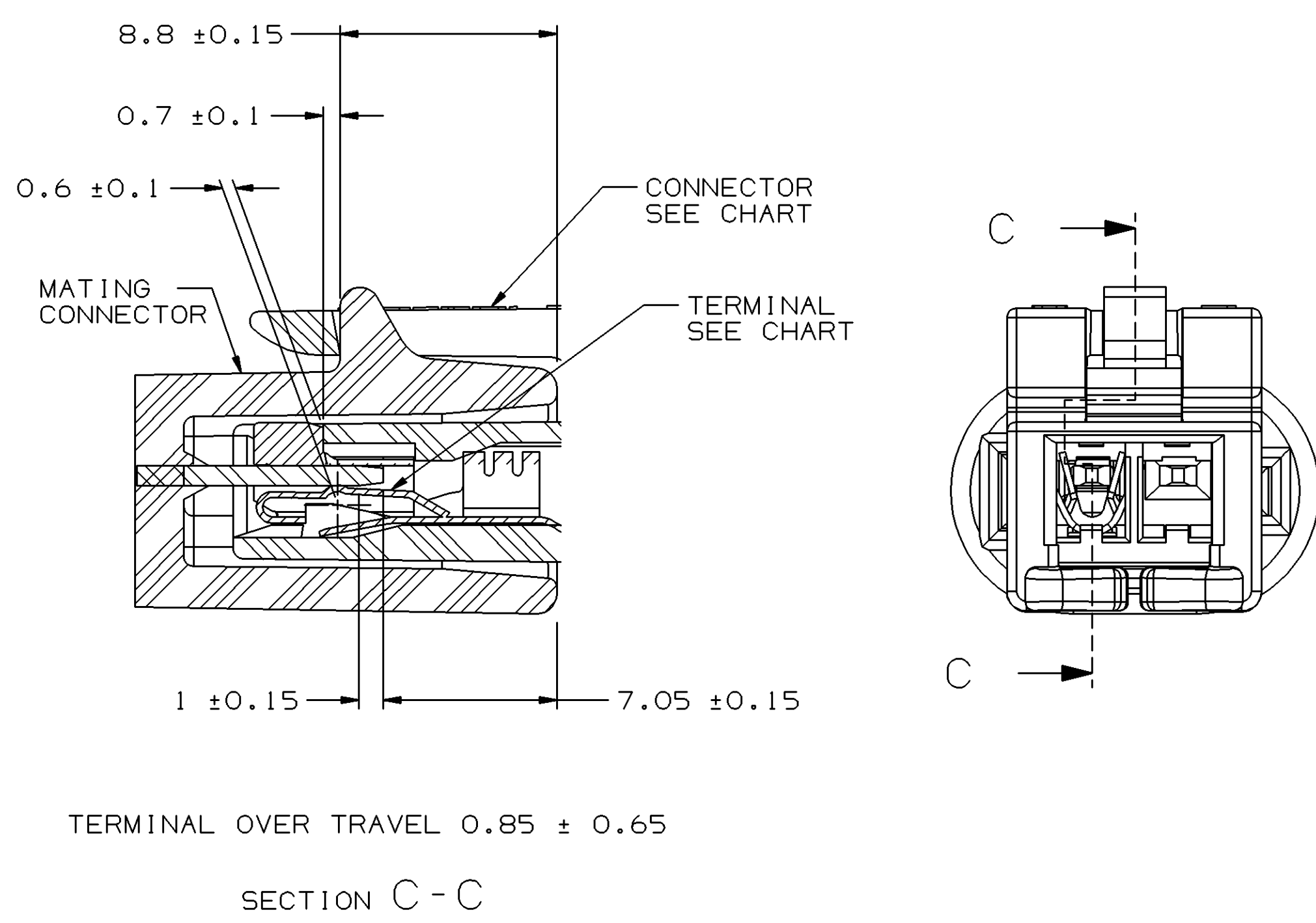
MATING CONNECTOR INFORMATION

SYMBOL DEFINITION		TOTAL NO OF INSPECTIONS REQUIRED	MISSING SYMBOLS
○	A DIMENSION WITHOUT AN INSPECTION REPORT SYMBOL DOES NOT REQUIRE INSPECTION. IT MAY BE CONTROLLED ON THE INDIVIDUAL COMPONENT DRAWING.	24	NO MISSING SYMBOL NUMBER
		LAST NO. USED	18



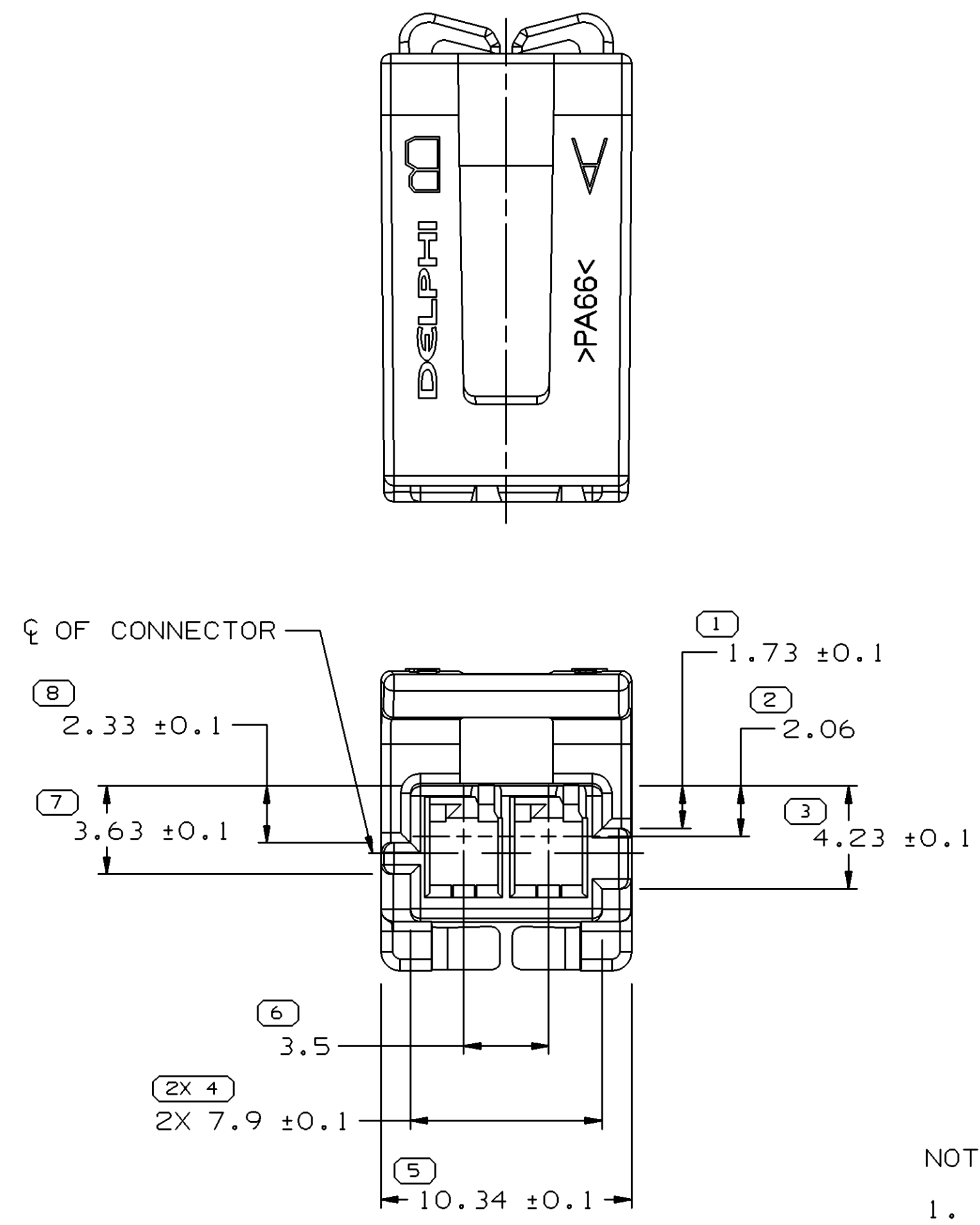
NOTES
 1. UNLESS OTHERWISE SPECIFIED AND/OR INDICATED:
 DIMENSIONS ARE TO FACE OF VIEW SHOWN AND AUTOMATICALLY ROUNDED BY COMPUTER FOR INSPECTION (SEE MATH MODEL FOR PRECISE DIMENSIONS). FOR ALL OTHER DIMENSIONS NOT SHOWN BUT REQUIRED FOR TOOL BUILD, SEE MATH MODEL FOR PRECISE TOOL PATH DATA. ALL RADI 0.4
 2. RECOMMENDED MATERIAL :
 GLASS REINFORCED NYLON OR POLYESTER.
 3. WHEN USING THIS INFORMATION FOR A NEW DESIGN, REQUEST THE LATEST COPY OF THIS PRINT FROM DELPHI PACKARD ELECTRIC DIVISION.

DATE	STG	REV	W/P	CHK	ZONE	REVISION HISTORY	AUTH	DR	APVD
09JN05	R	01	-	-	-	WAS PE143514 AND RELEASED	268942	JBD	JVM/CSD
01SE05	R	01	AA	-	-	UPDATED MODEL, ADDED DIM (1 PLC), REVISED PSD DIM & REVISED DIMS (11 PLC)	271459	JTV	AUG/CSD
30SE05	R	01	AB	-	-	UPDATED PDM ATTRIBUTES	273163	MDH	JAA/CSD
17OC05	R	01	AC	-	-	18.46 WAS 18.46 ± 0.1	273756	ACG	JAA/CSD

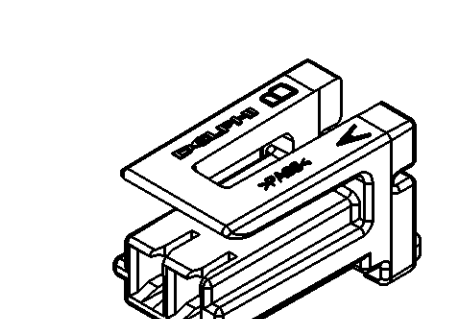


STACK ANALYSIS VIEW

13530018	12124075
CONNECTOR	TERMINAL



NOTES
 1. UNLESS OTHERWISE SPECIFIED AND/OR INDICATED:
 DIMENSIONS ARE TO FACE OF VIEW SHOWN AND AUTOMATICALLY ROUNDED BY COMPUTER FOR INSPECTION (SEE MATH MODEL FOR PRECISE DIMENSIONS). FOR ALL OTHER DIMENSIONS NOT SHOWN BUT REQUIRED FOR TOOL BUILD, SEE MATH MODEL FOR PRECISE TOOL PATH DATA.
 2. MATERIAL RECYCLING CODE PER ISO 11469. (0.85)X(0.1) CHARACTERS AS SHOWN TO BE LOCATED ON ANY EXTERIOR SURFACE.
 3. THIS PART ACCEPTS THE FOLLOWING COMPONENTS OR EQUIVALENT:
 CAVITIES TO ACCEPT 12124075 TERMINAL.
 4. (0.75)X(0.1) DELPHI CORPORATE BRAND TO BE LOCATED ON ANY EXTERIOR SURFACE, PREFERABLY VISIBLE AT FINAL ASSEMBLY. OPTIONAL CONSTRUCTION FOR EXISTING TOOLING MAY BE "PED".
 5. WHEN PARTS ARE TO BE SHIPPED THEY MUST BE PACKED IN PLASTIC BAGS OR SHIPPING CONTAINERS MUST BE LINED WITH PLASTIC LINERS. BAGS OR LINERS MUST BE SEALED TO AVOID ENTRY OF FOREIGN MATTER.



VIEW SCALE DOES NOT REFLECT ACTUAL PART SIZE

DIMENSIONAL RANGE (MM)	TOLERANCE (MM)	CHART REF
FROM 0 TO >0	>0	1
0 TO >20	>20	2
>20 TO >30	>30	3
>30 TO >70	>70	4
>70 TO >100	>100	5
>100 TO >150	>150	6
>150 TO >200	>200	7
>200 TO >250	>250	8
>250 TO >300	>300	9
>300 TO >400	>400	10

DRW TYPE	PART DRAWING
VOLUME (CP)	0,880
DISTR CODE	D
UNLESS OTHERWISE SPECIFIED THIS DOCUMENT IS IN ACCORDANCE WITH ASME Y14.5M-1994 AS AMENDED BY THE 04 GLOBAL DIMENSIONING AND TOLERANCING ADDENDUM (2003). SEPARATE PATTERNING OF FEATURES MAY BE OBTAINED SEPARATELY. IRRESPECTIVE OF DATUM REFERENCES.	
ALL DIMENSIONS ARE IN MILLIMETERS	
THIRD ANGLE PROJECTION	DO NOT SCALE
USE MATH DATA	UNSPRINGS

DELPHI
 DELPHI PACKARD ELECTRIC SYSTEMS
 WARREN, OH

DR	DATE
APVD1 J. R. BARRIENTOS	09JN05
APVD2 J. VILLAMIL	15JN05
APVD3 C. DEPROFIO	17JN05
APVD4	
APVD5	

SUBSTANCES OF CONCERN AND RECYCLED CONTENT PER DELPHI 10949001

MATERIAL: M3592012 PA66 HS 1M GRA LT

DRAWING NAME: CONN 2 F M/P 150.2 GRA LT

DRAWING NUMBER: 13530018

SIZE: A0 SCALE: 5:1 FRAME NO: 1 OF 1 SHEET NO: 1 OF 1 REV: N/A