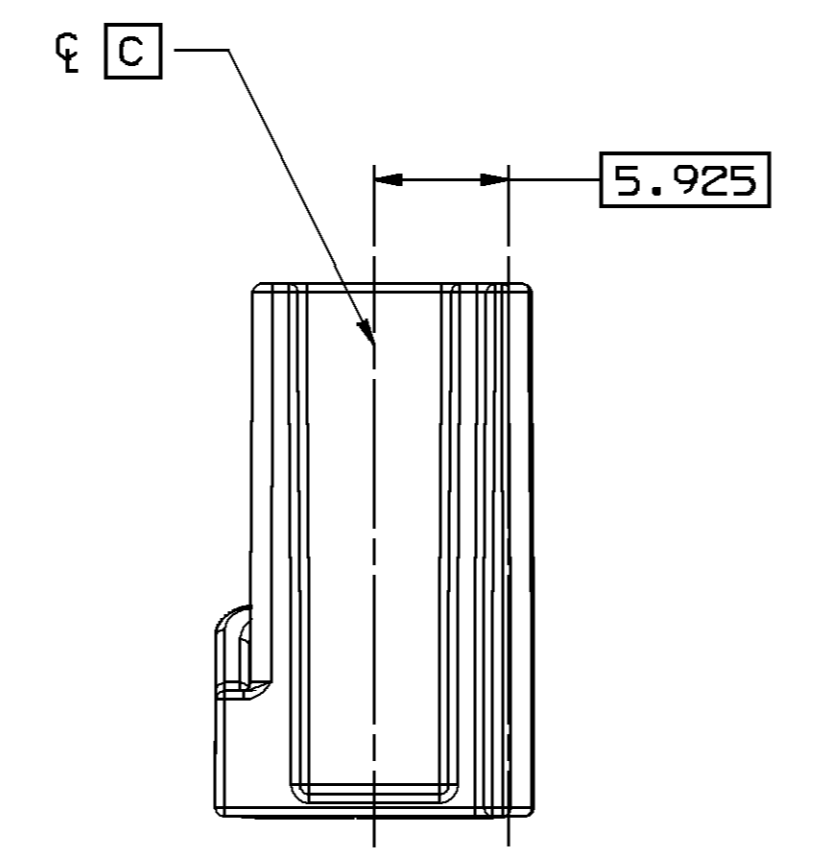
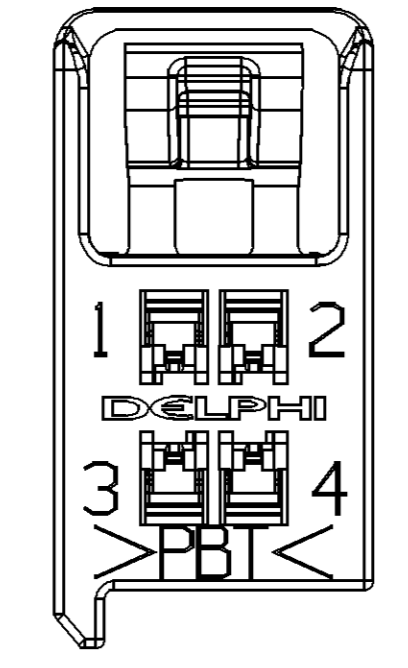
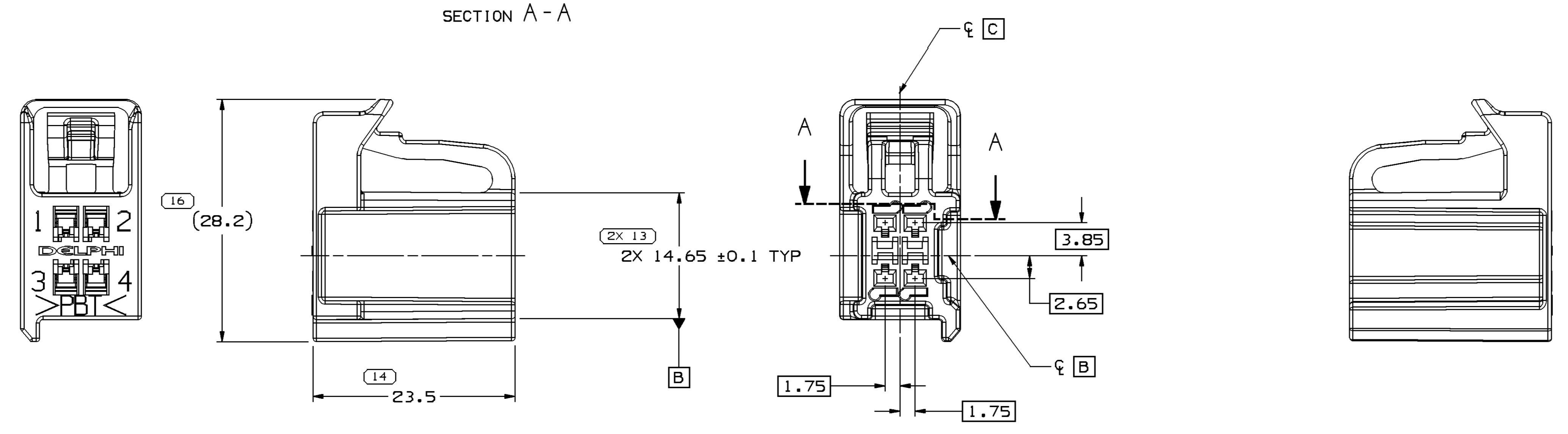
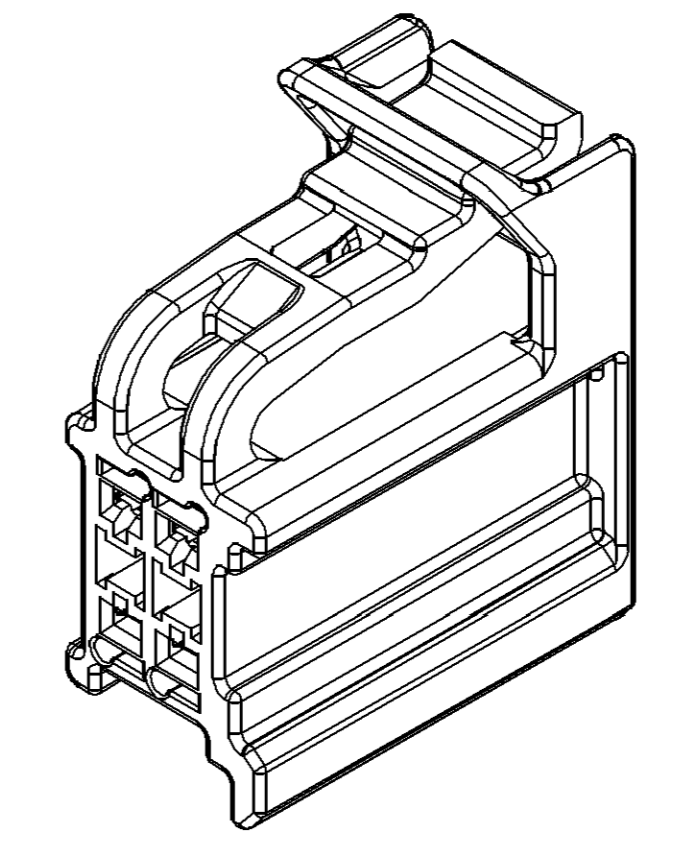
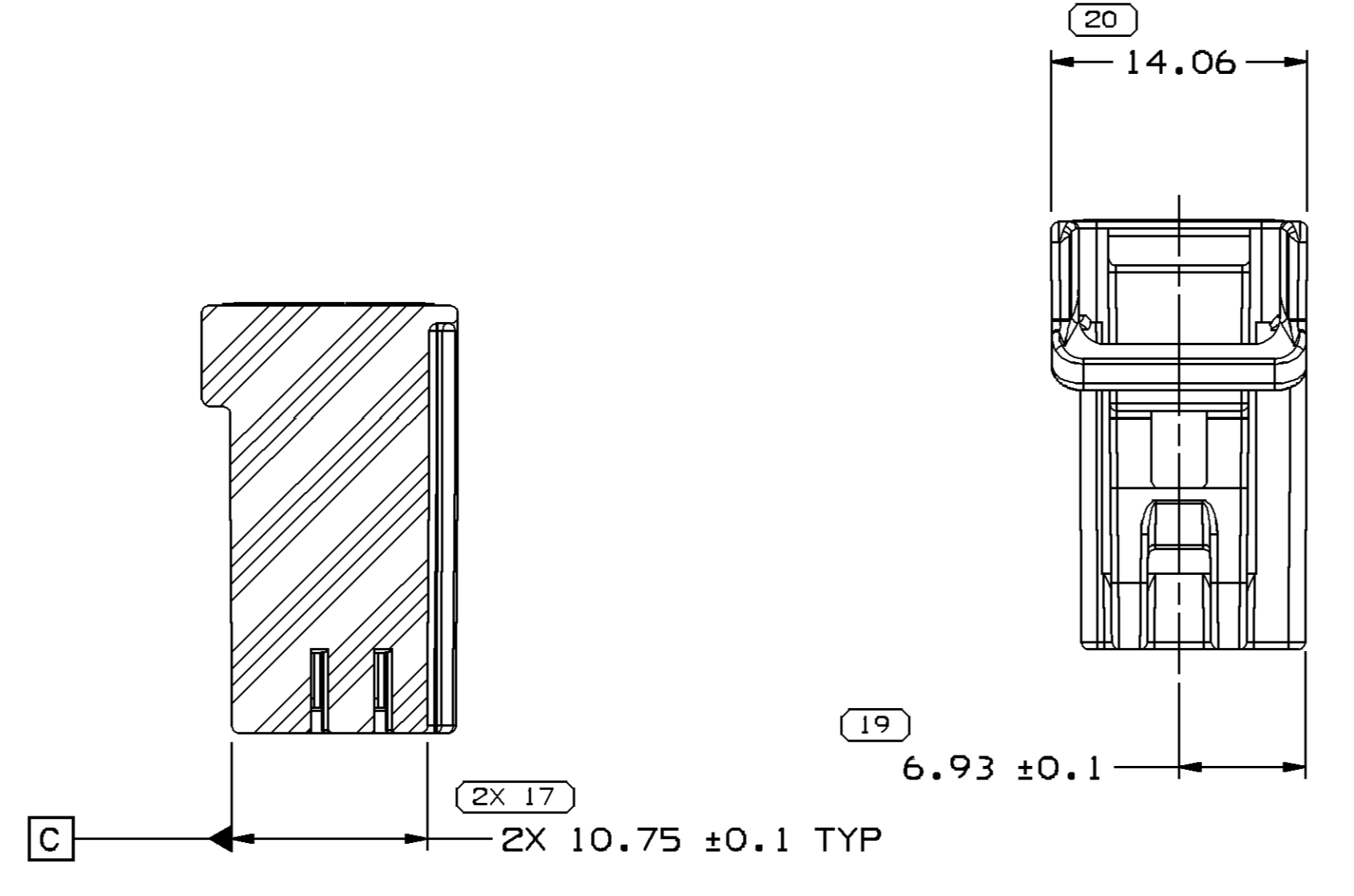
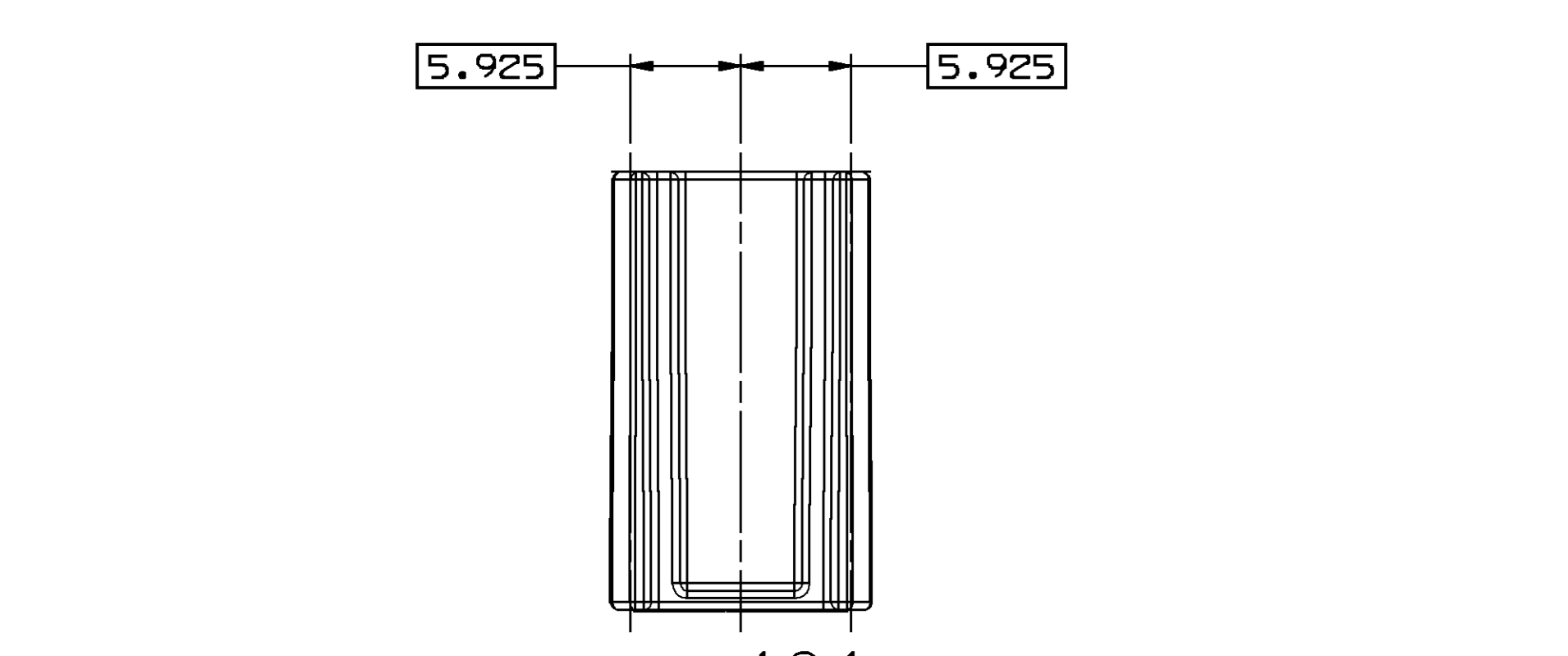
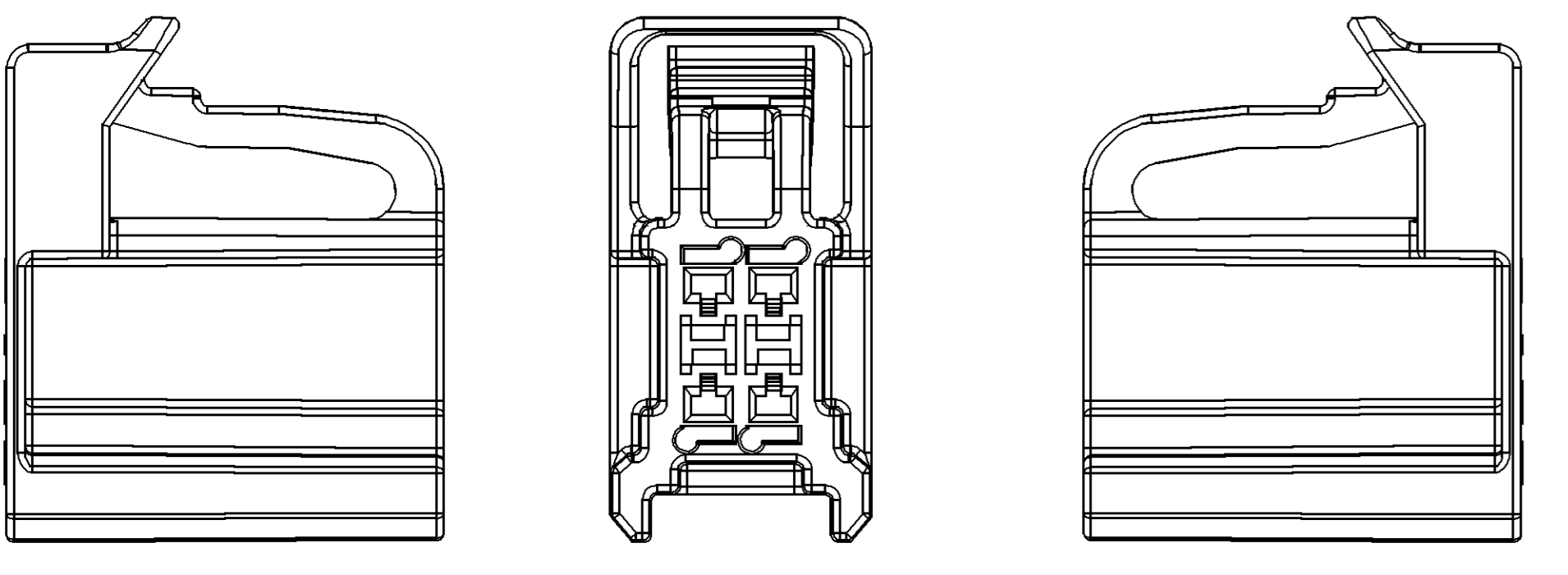
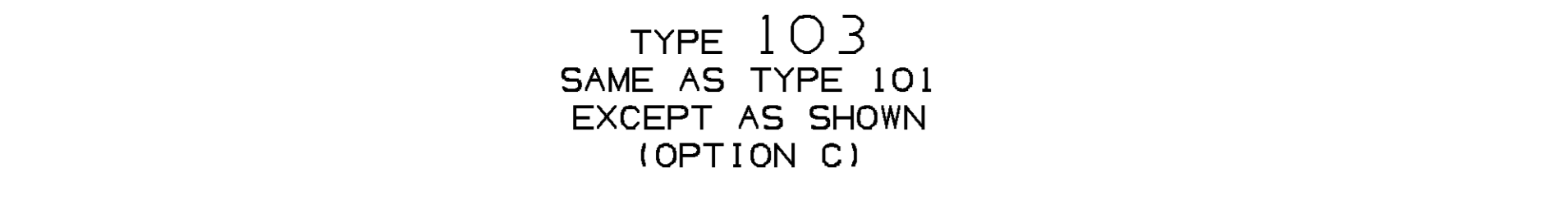
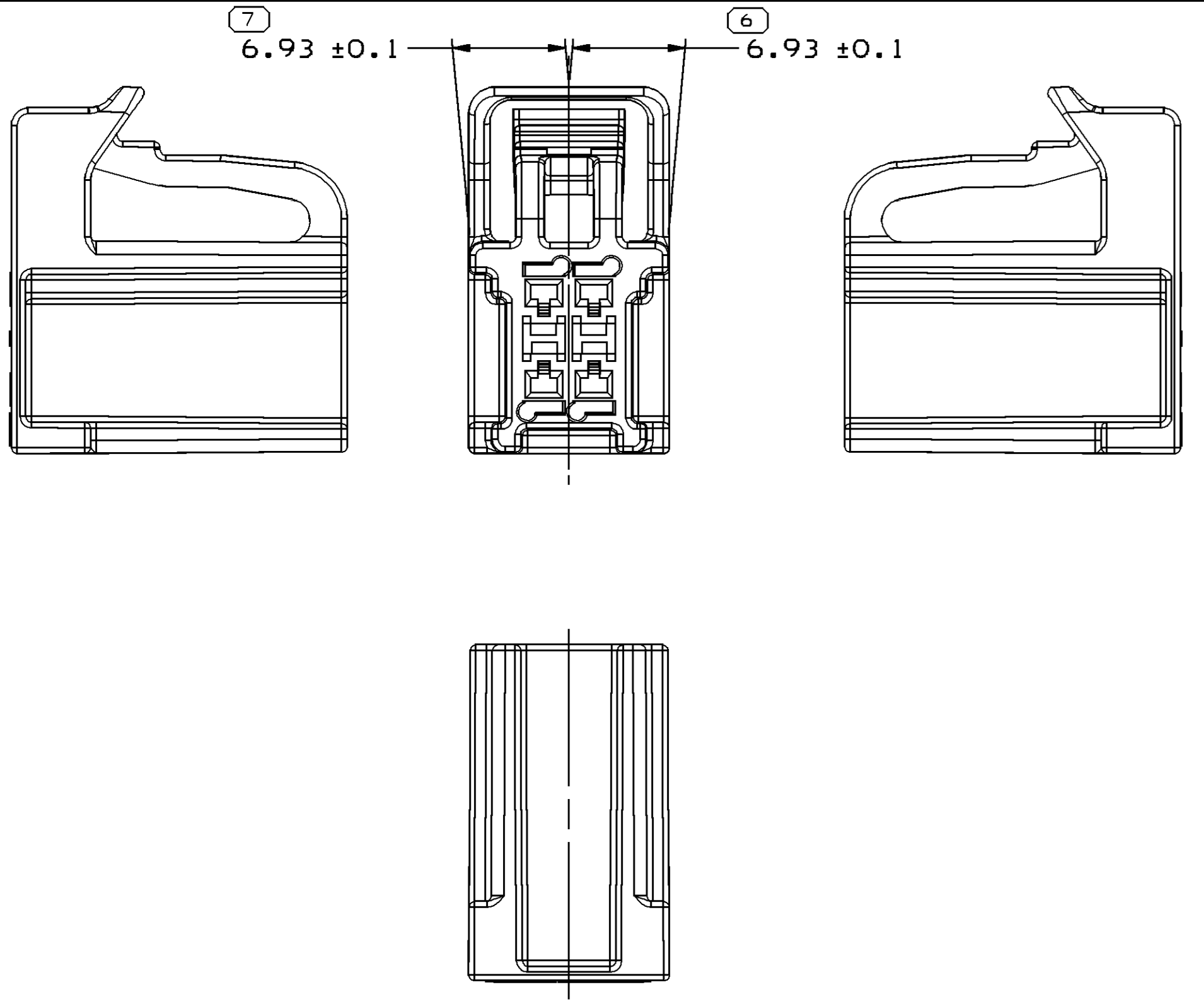
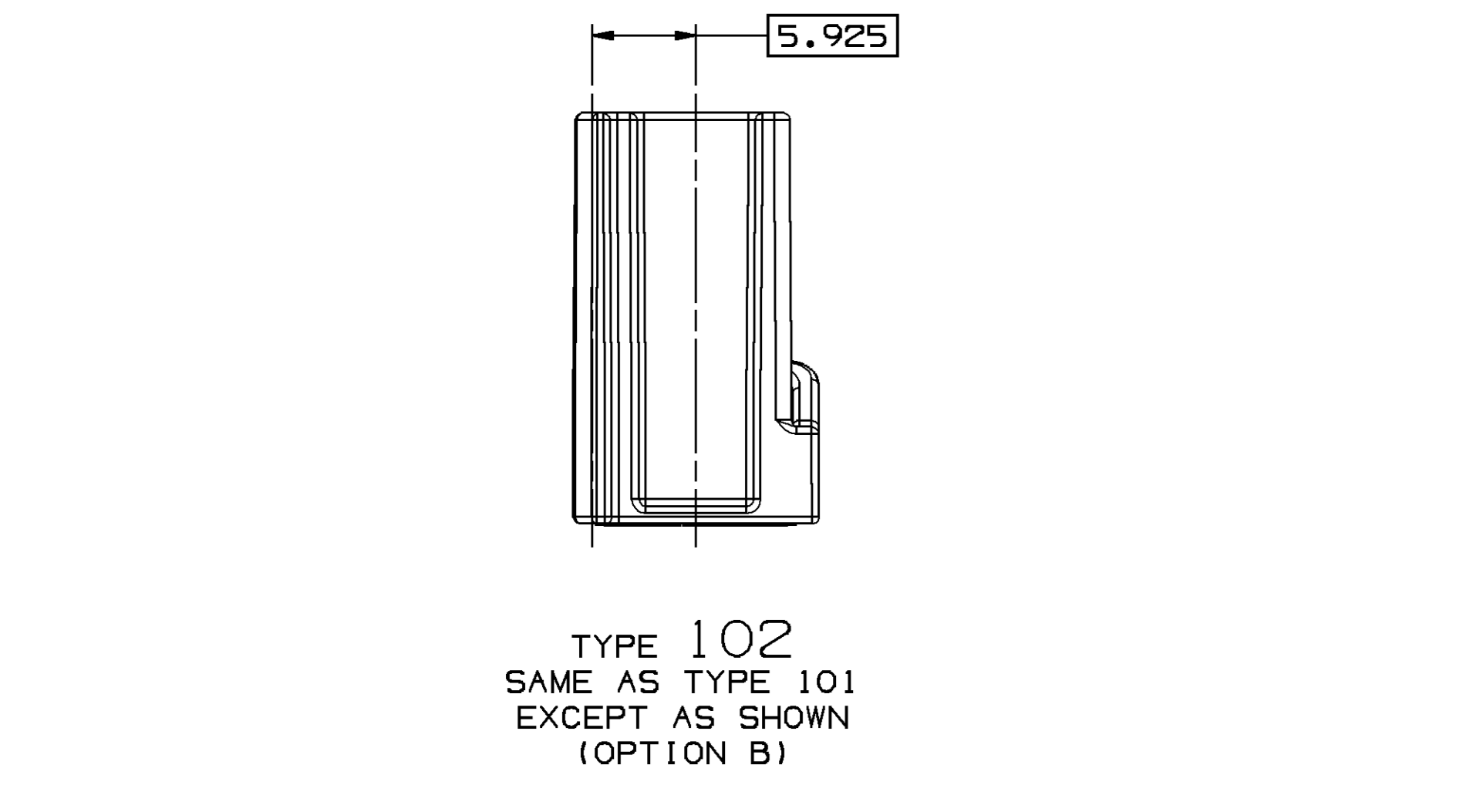
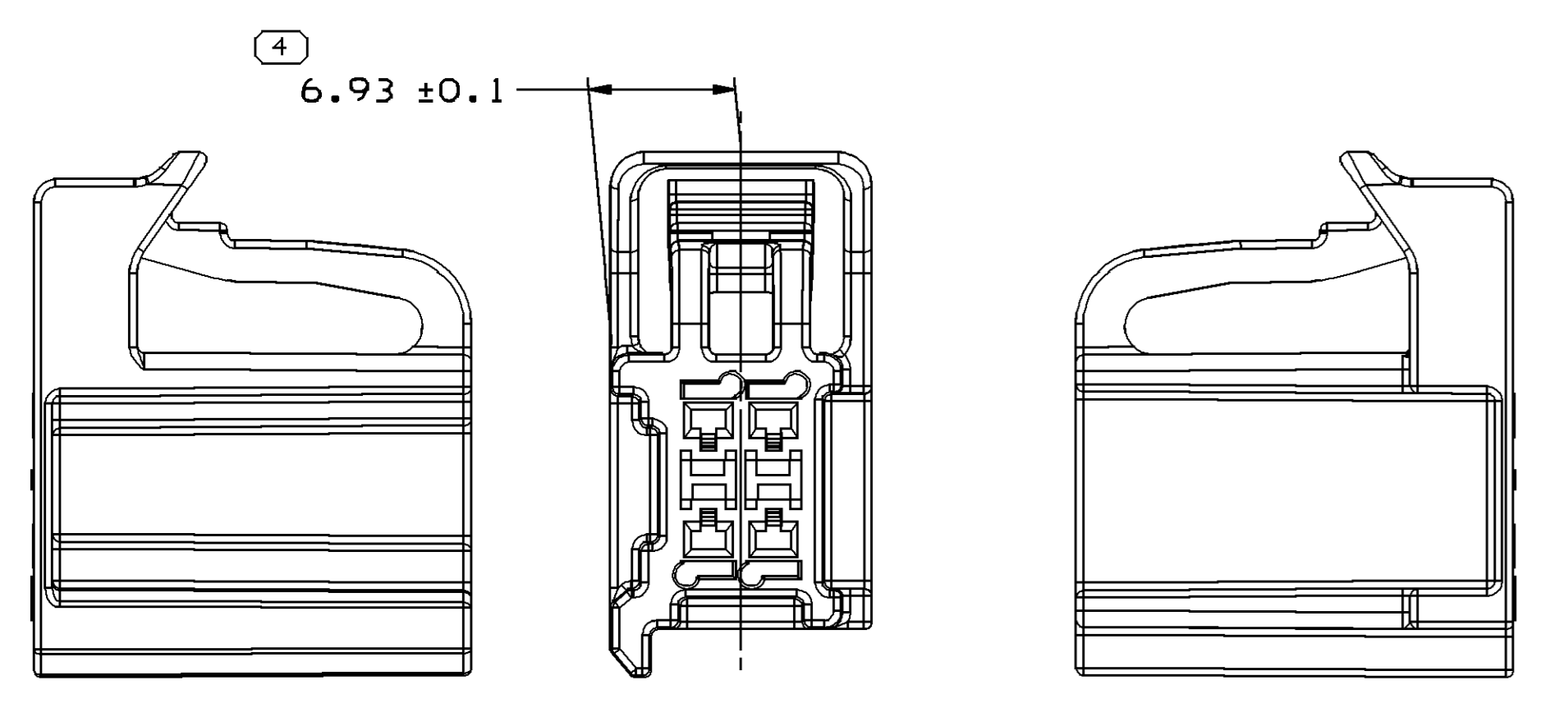


| SYMBOL DEFINITION | | TOTAL NO OF INSPECTIONS REQUIRED | | MISSING SYMBOLS | |
|--|--|----------------------------------|--|------------------------|--|
| A DIMENSION WITHOUT AN INSPECTION REPORT SYMBOL DOES NOT REQUIRE INSPECTION. IT MAY BE CONTROLLED ON THE INDIVIDUAL COMPONENT DRAWING. | | 11 | | 1-3 5 8-12 15 18 21-22 | |
| LAST NO. USED | | 22 | | | |

| DWG STATUS | | | | REVISION HISTORY | | | | AUTH | | DR | | AP/VD | |
|------------|-----|-----|-----|------------------|------|--|--|------|--|--------|-----|-------|----|
| DATE | STG | REV | N/P | CHG | ZONE | | | | | | | | |
| 15AU06 | R | 01 | - | - | | ALL PARTS - RELEASED | | | | 283040 | JR | JR | MP |
| 30AU06 | R | 02 | - | - | | UPDATED PDM ATTRIBUTES | | | | 284104 | EES | EES | MP |
| 200C06 | R | 03 | - | - | | REMOVED ALL SURFACE FINISH NOTES, REVISED HOLDER NOTE AND REVISED CONNECTOR LOCK SHROUD | | | | 285661 | RJD | RJD | MP |
| 03AP07 | R | 04 | - | - | | ALL PARTS - PROCESS SENSITIVE DIMENSION WAS 19 AND ADDED NOTE 7 PARTS NOT DESIGNED TO ACCEPT CPA | | | | 400971 | MM | MM | MP |



- NOTES
- UNLESS OTHERWISE SPECIFIED AND/OR INDICATED: DIMENSIONS ARE TO FACE OF VIEW SHOWN AND AUTOMATICALLY ROUNDED BY COMPUTER FOR INSPECTION (SEE MATH MODEL FOR PRECISE DIMENSIONS). FOR ALL OTHER DIMENSIONS NOT SHOWN BUT REQUIRED FOR TOOL BUILD, SEE MATH MODEL FOR PRECISE TOOL PATH DATA.
 - MATERIAL RECYCLING CODE PER ISO 11469. (2.3)X(0.1) CHARACTERS AS SHOWN TO BE LOCATED ON ANY EXTERIOR SURFACE.
 - THIS PART ACCEPTS THE FOLLOWING COMPONENTS OR EQUIVALENT:
TERMINAL 13526678 & 13526680
MAX INSULATION CRIMP MUST BE LESS THAN 3.1 HIGH AND 2.75 WIDE.
 - FOR MATING CONFIGURATION REQUIREMENTS, SEE CHART.
 - TERMINAL POSITION REQUIRES THE USE OF THE DELPHI BUILD / RING-OUT HOLDER OR DELPHI NORTH AMERICA APPROVED EQUIVALENT. FAILURE TO DO SO CAN RESULT IN UNSEATED TERMINALS.
 - (1.0)X(0.1) DELPHI CORPORATE BRAND TO BE LOCATED ON ANY EXTERIOR SURFACE, PREFERABLY VISIBLE AT FINAL ASSEMBLY. OPTIONAL CONSTRUCTION FOR EXISTING TOOLING MAY BE "PED".
 - PARTS NOT DESIGNED TO ACCEPT CPA.

| PART NO | REV | N/P | MATERIAL SPECIFICATION AND COLOR | VOLUME | TYPE | OPTION | MATING CONNECTOR / EWCAP P/N |
|----------|-----|-----|----------------------------------|--------|------|--------|------------------------------|
| 13586121 | 03 | AA | M4695007 PBT GRN | 2.975 | 104 | D | 150-U-004-2-D01 |
| 13586120 | 03 | AA | M4695027 PBT RST | 2.745 | 103 | C | 150-U-004-2-C01 |
| 13586119 | 03 | AA | M4695003 PBT GRA | 2.860 | 102 | B | 150-U-004-2-B01 |
| 13586118 | 03 | AA | M4695002 PBT BLK | 2.860 | 101 | A | 150-U-004-2-A01 |

| DIMENSIONAL RANGE (MM) | | TOLERANCE UNLESS OTHERWISE SPECIFIED | |
|------------------------|-------|--------------------------------------|--------|
| FROM | TO | ANGULAR TOLERANCE | 2D |
| > 0 | > 30 | ± 0.1 | ± 0.1 |
| > 30 | > 70 | ± 0.15 | ± 0.15 |
| > 70 | > 100 | ± 0.2 | ± 0.2 |
| > 100 | > 150 | ± 0.3 | ± 0.3 |
| > 150 | > 200 | ± 0.4 | ± 0.4 |
| > 200 | > 250 | ± 0.5 | ± 0.5 |
| > 250 | > 300 | ± 0.6 | ± 0.6 |
| > 300 | > 400 | ± 0.8 | ± 0.8 |

| PART DRAWING | |
|---|--------------|
| STYLE | SEE CHART |
| VOLUME (OPT) | D |
| DISTR CODE | |
| UNLESS OTHERWISE SPECIFIED | |
| THIS DOCUMENT IS IN ACCORDANCE WITH ASME Y14.5M-1994 AS MODIFIED BY THE IN-SOURCE DIMENSIONING AND TOLERANCE MANUAL. SEPARATE WRITINGS OF TOLERANCE LIMITS ARE ESTABLISHED. | |
| ALL DIMENSIONS ARE IN MILLIMETERS | |
| THIRD ANGLE PROJECTION | DO NOT SCALE |
| USE MATH DATA | |

DELPHI
DELPHI PACKARD ELECTRICAL/ELECTRONIC ARCHITECTURE
NAPER, OH

| DR | DATE |
|---------------------|--------|
| APV01 J. RICHARDSON | 15AU06 |
| APV02 J. RICHARDSON | 15AU06 |
| APV03 M. PENN | 17AU06 |
| APV04 | |
| APV05 | |

SUBSTANCES OF CONCERN AND RECYCLED CONTENT PER DELPHI 10949001

MATERIAL SEE CHART

DRAWING NAME
TAXI CONN F 6T FBT 150

DRAWING NUMBER
13520380

SIZE AD 3:1

SCALE 3:1

FRAME NO 1 OF 1

SHEET NO 4 OF 11

REV 04

DATE 03-29-07