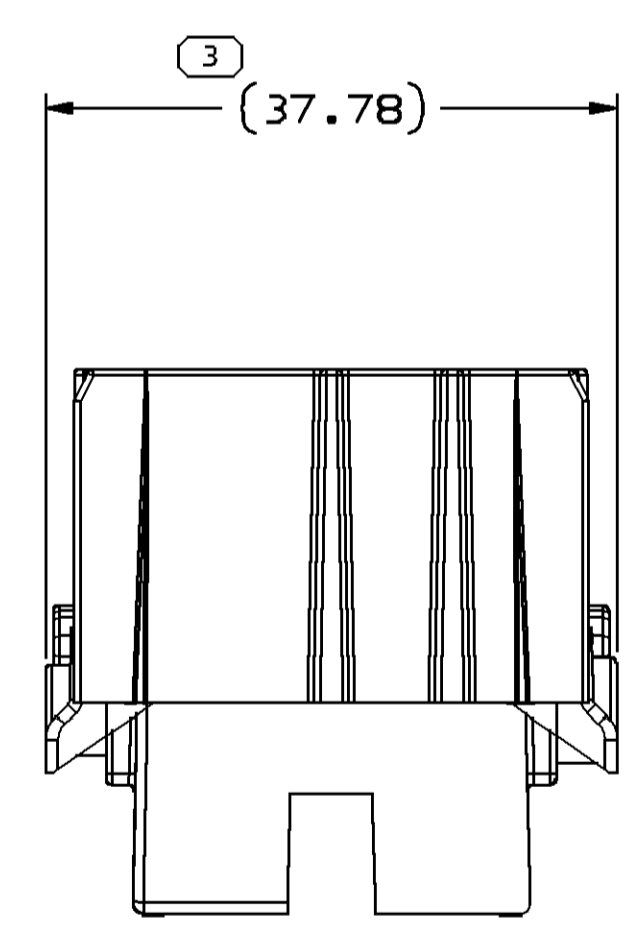
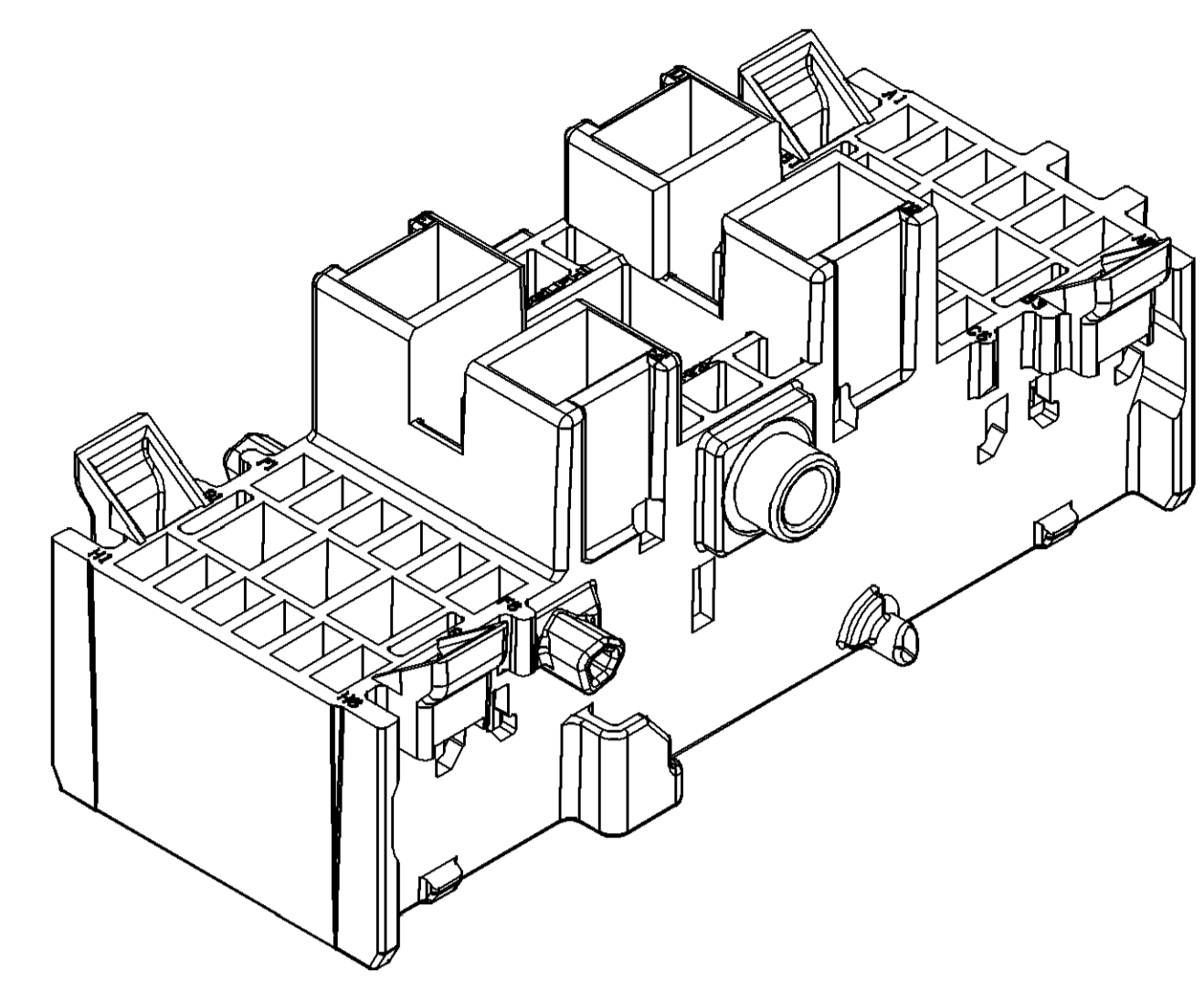
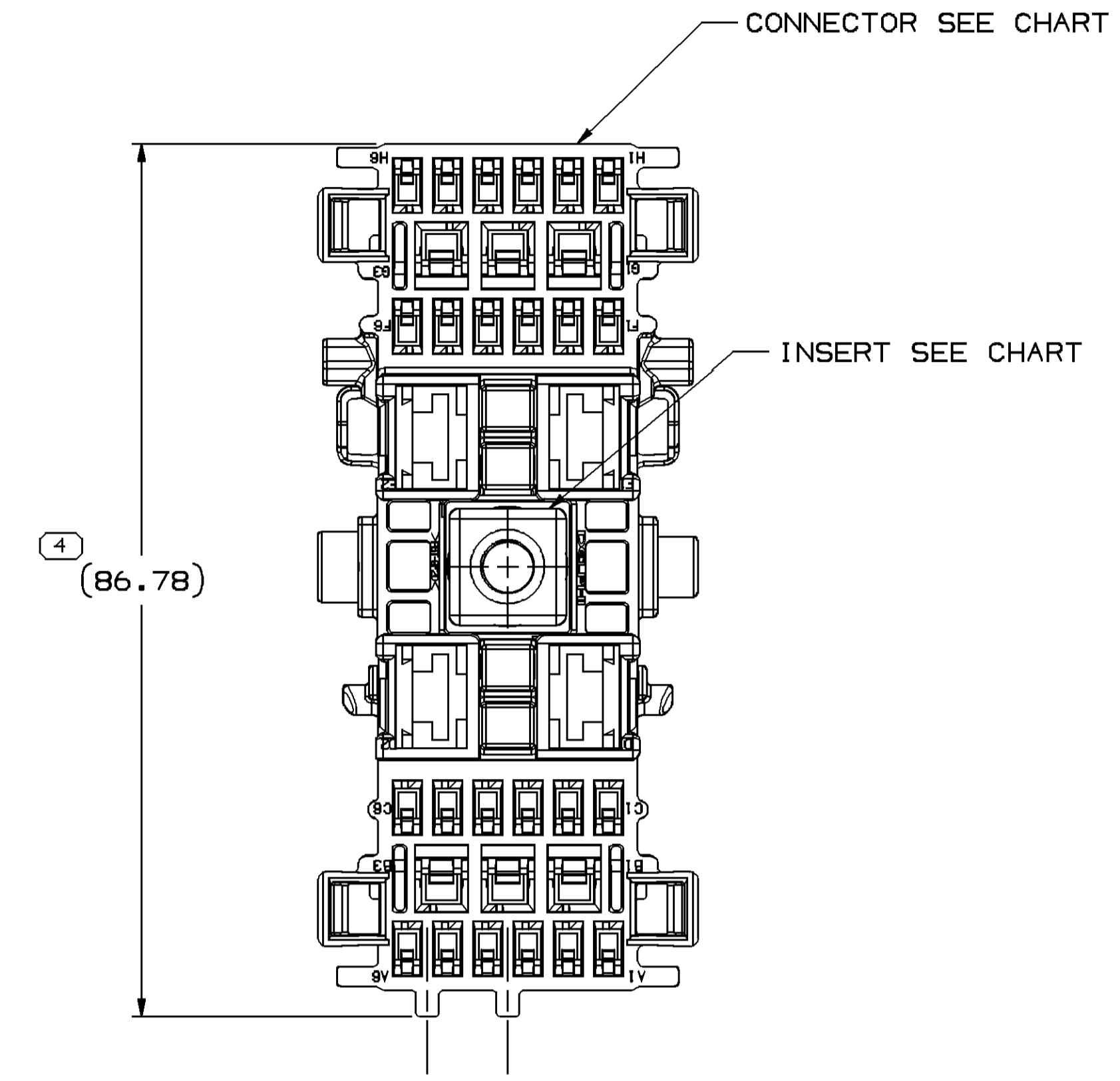
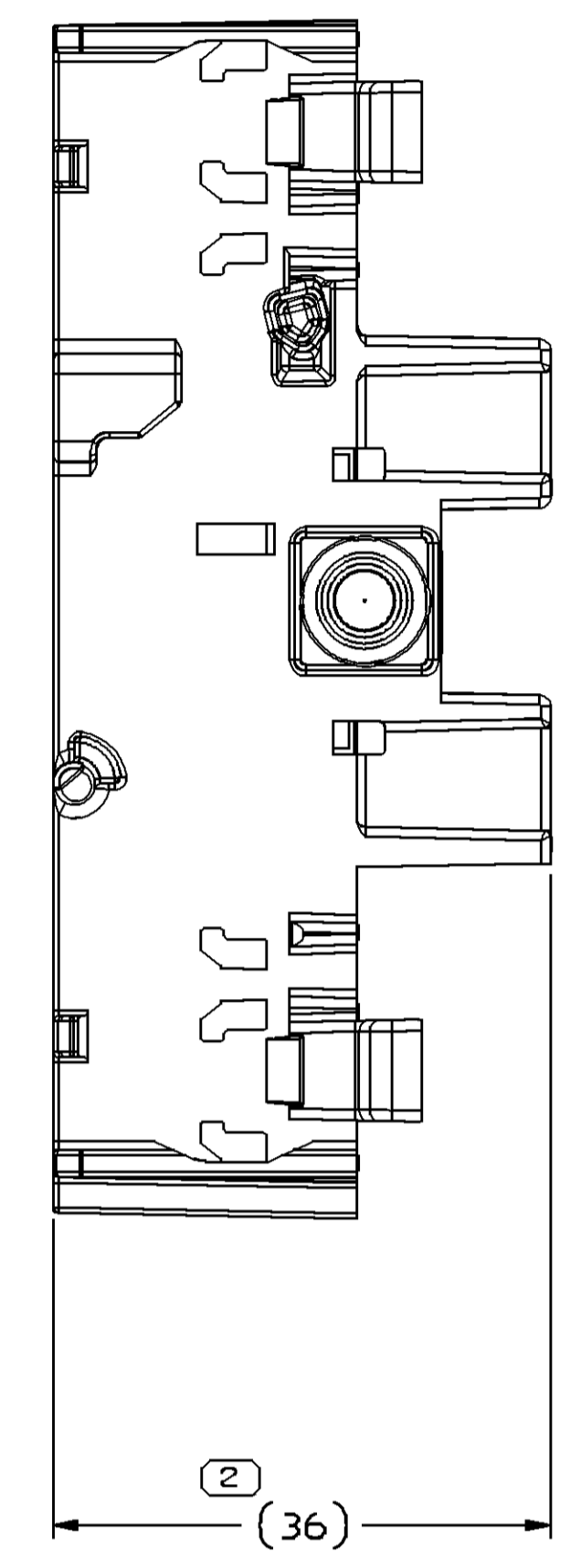
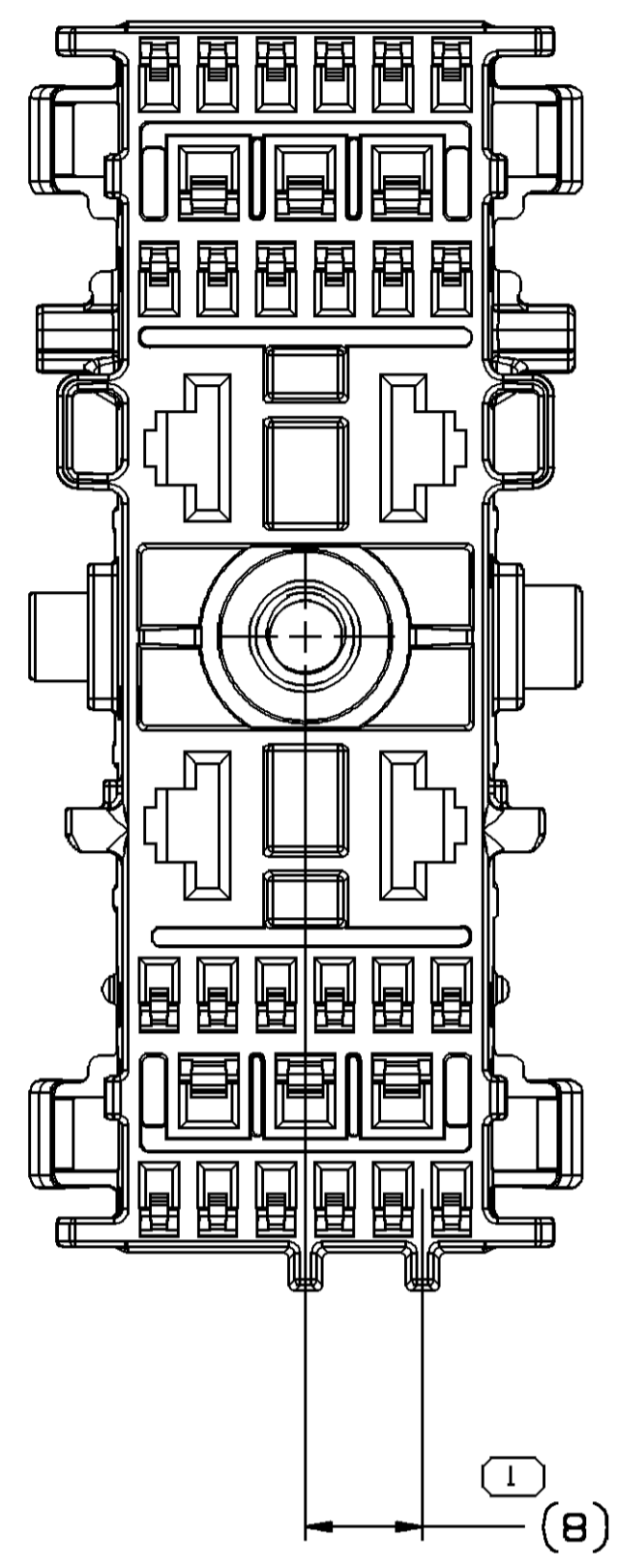


SYMBOL DEFINITION		MISSING SYMBOLS	
A DIMENSION WITHOUT AN INSPECTION REPORT SYMBOL DOES NOT REQUIRE INSPECTION. IT MAY BE CONTROLLED ON THE INDIVIDUAL COMPONENT DRAWING.	TOTAL NO OF INSPECTIONS REQUIRED	4	NO MISSING SYMBOL NUMBER
	LAST NO. USED	4	

DWG STATUS						REVISION HISTORY		AUTH	DR	AP/VD	AP/VD
DATE	STG	REV	W/P	CHG	ZONE					1	2
06N007	R	01	-	-	-	WAS PE135240, REVISED AND RELEASED		296010	DMD	EAT	ML
11N013	R	01	AA	-	-	DRAWING NAME WAS ASM CONN 0 F 6T 150 280 M/P 800 SLD BASE 34		424446	AHG	JVM	JSM



NOTES

- UNLESS OTHERWISE SPECIFIED AND/OR INDICATED: DIMENSIONS ARE TO FACE OF VIEW SHOWN AND AUTOMATICALLY ROUNDED BY COMPUTER FOR INSPECTION (SEE MATH MODEL FOR PRECISE DIMENSIONS). FOR ALL OTHER DIMENSIONS NOT SHOWN BUT REQUIRED FOR TOOL BUILD, SEE MATH MODEL FOR PRECISE TOOL PATH DATA.
- SEALING CODE 0 - UNSEALED
- ASSEMBLY NUT INSERT PUSH OUT FORCE IS 800 N MINIMUM. ASSEMBLY NUT SHALL NOT RATLLE AFTER CRIMP PROCESS.
- THIS PRODUCT IS NOT CATEGORIZED AS AN APPEARANCE ITEM, MINOR IMPERFECTIONS INCLUDING, BUT NOT LIMITED TO, FLOW MARKS, COLOR BLEMISHES, GATE VESTIGE, AND SOFT FLASH THAT DO NOT AFFECT THE FIT, FORM, OR FUNCTION OF THE PART ARE PERMISSIBLE PER DPNP-4.7-CS-01.
- FOR APPLICATION DATA SEE THE APPLICATION DRAWING.

PART NO	CONNECTOR	INSERT
13640613	13653961	15410323

DIMENSIONAL RANGE (MM)		CHART SET	
FROM	> 0	> 20	> 30
TO	20	30	40

REFERENCE	THIRD ANGLE PROJECTION	DO NOT SCALE
PE135240_01		

SIZE	SCALE	FRAME NO	SHEET NO	REV	W/P
A0	2:1	1	1	01	AA

DELPHI
 DELPHI PACKARD ELECTRICAL/ELECTRONIC ARCHITECTURE
 WARREN, OH
 COPYRIGHT 2007 DELPHI CORPORATION AND/OR ITS AFFILIATES. ALL RIGHTS RESERVED.

THIS DRAWING IS THE PROPERTY OF DELPHI CORPORATION AND CONTAINS DELPHI CONFIDENTIAL INFORMATION. THE REPRODUCTION, DISTRIBUTION AND UTILIZATION OF THIS DOCUMENT OR ITS CONTENTS OR DATA, AS WELL AS COMMUNICATION OF ANY CONTENT TO OTHERS, WITHOUT EXPRESS AUTHORIZATION, IS PROHIBITED.

DR	DATE
AP/01 D. MARTINEZ	06N007
AP/02 E. TRUJILLO	06N007
AP/03 M. LOEW	06N007
AP/04	

SUBSTANCES OF CONCERN AND RECYCLED CONTENT PER DELPHI 10949001

MATERIAL: SEE CHART

DRAWING NAME: ASM CONN 34 F 6T 150 280 M/P 800

DRAWING NUMBER: 13640613