

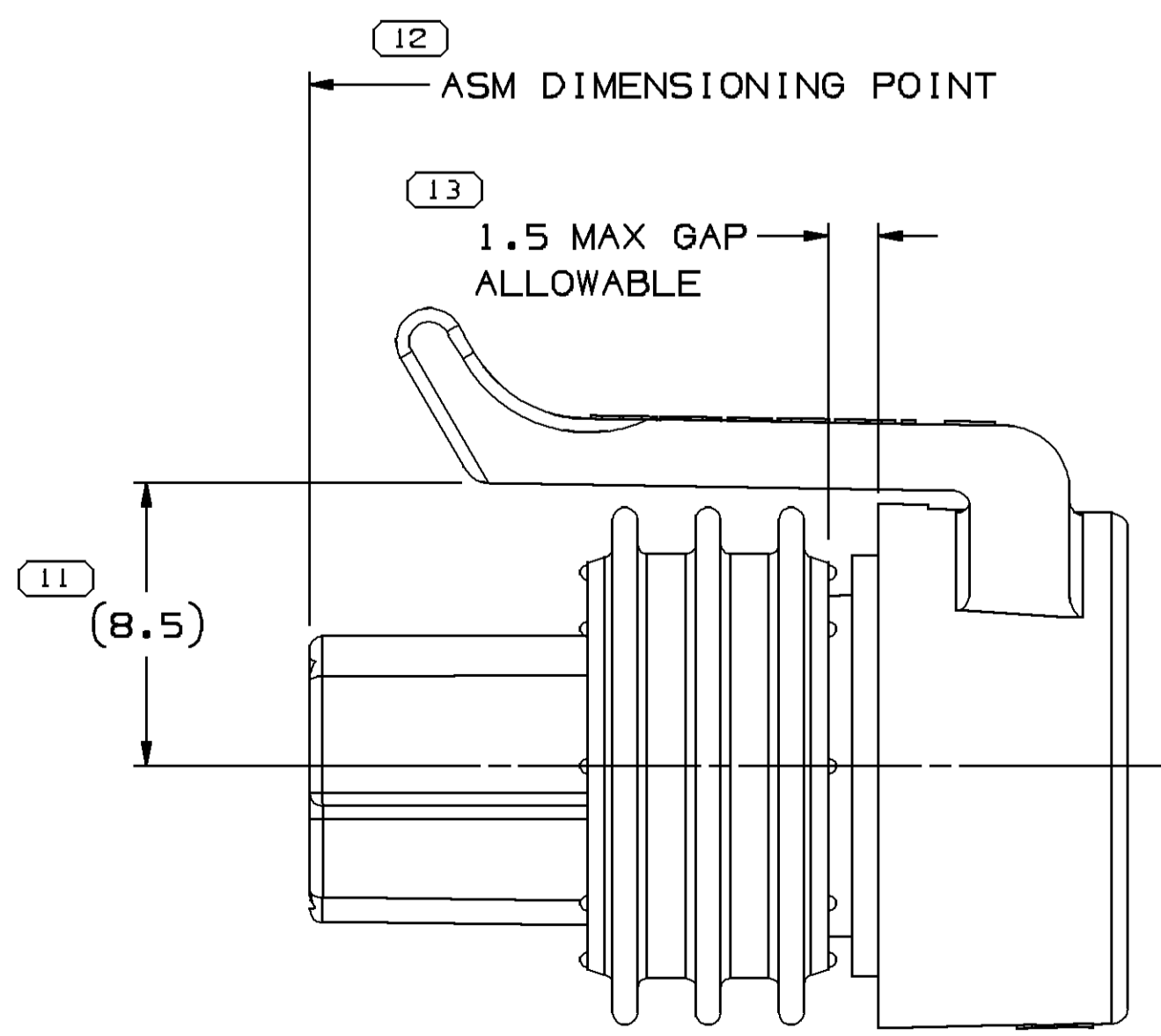
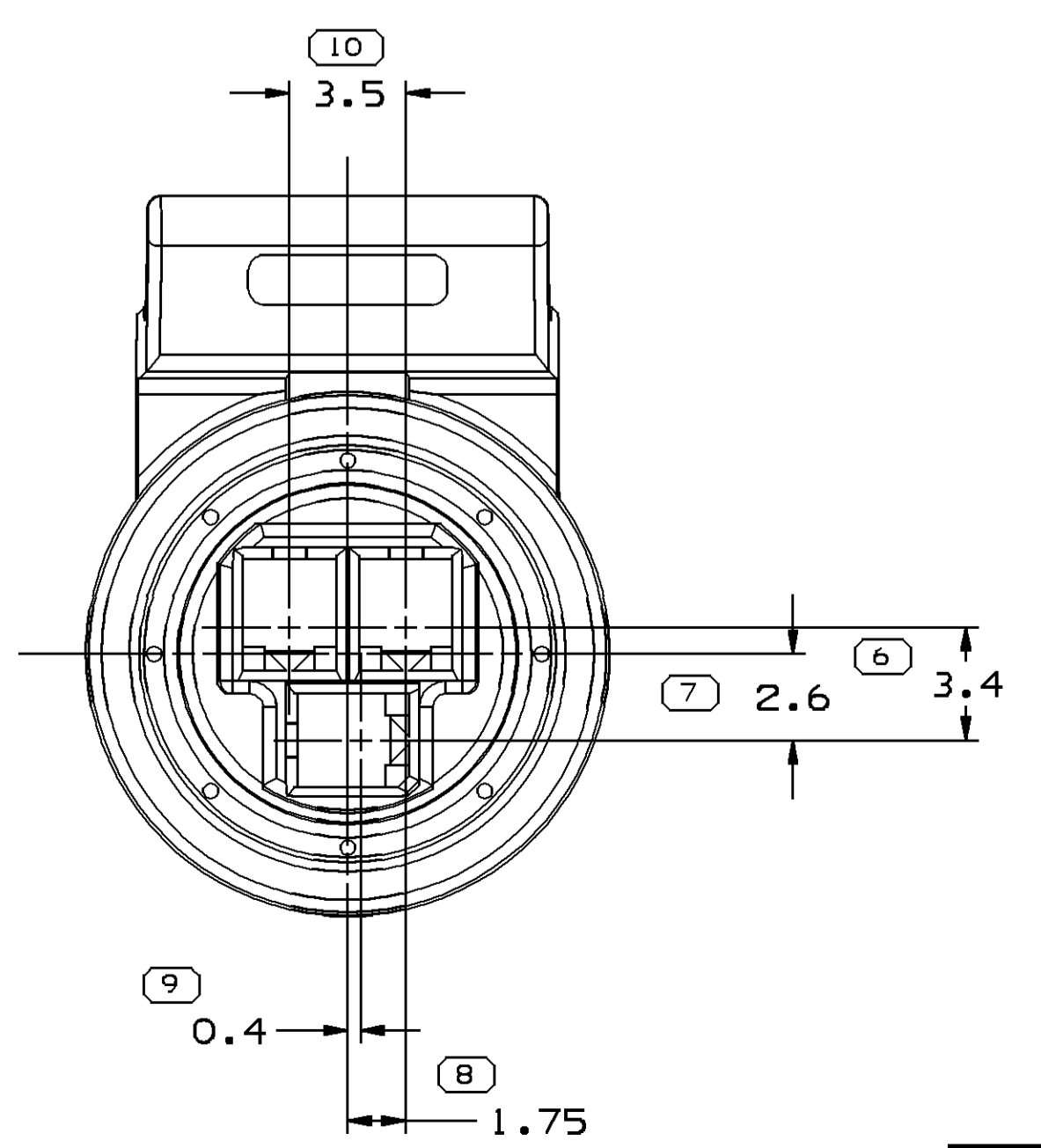
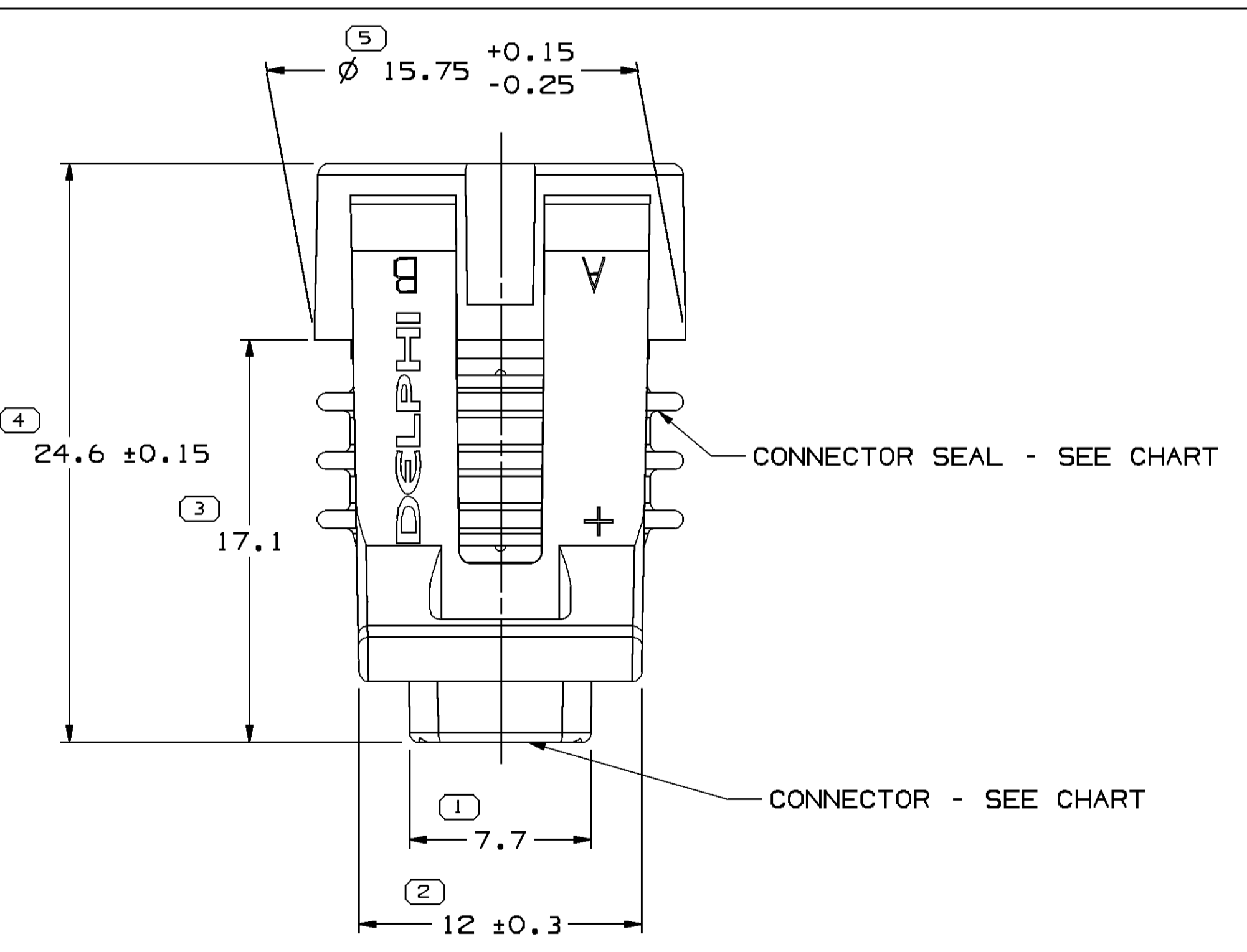
● THESE DIMENSIONS ARE CRITICAL TO THE MECHANICAL AND ELECTRICAL PERFORMANCE OF THE CONNECTION SYSTEM.

### MATERIAL SPECIFICATIONS

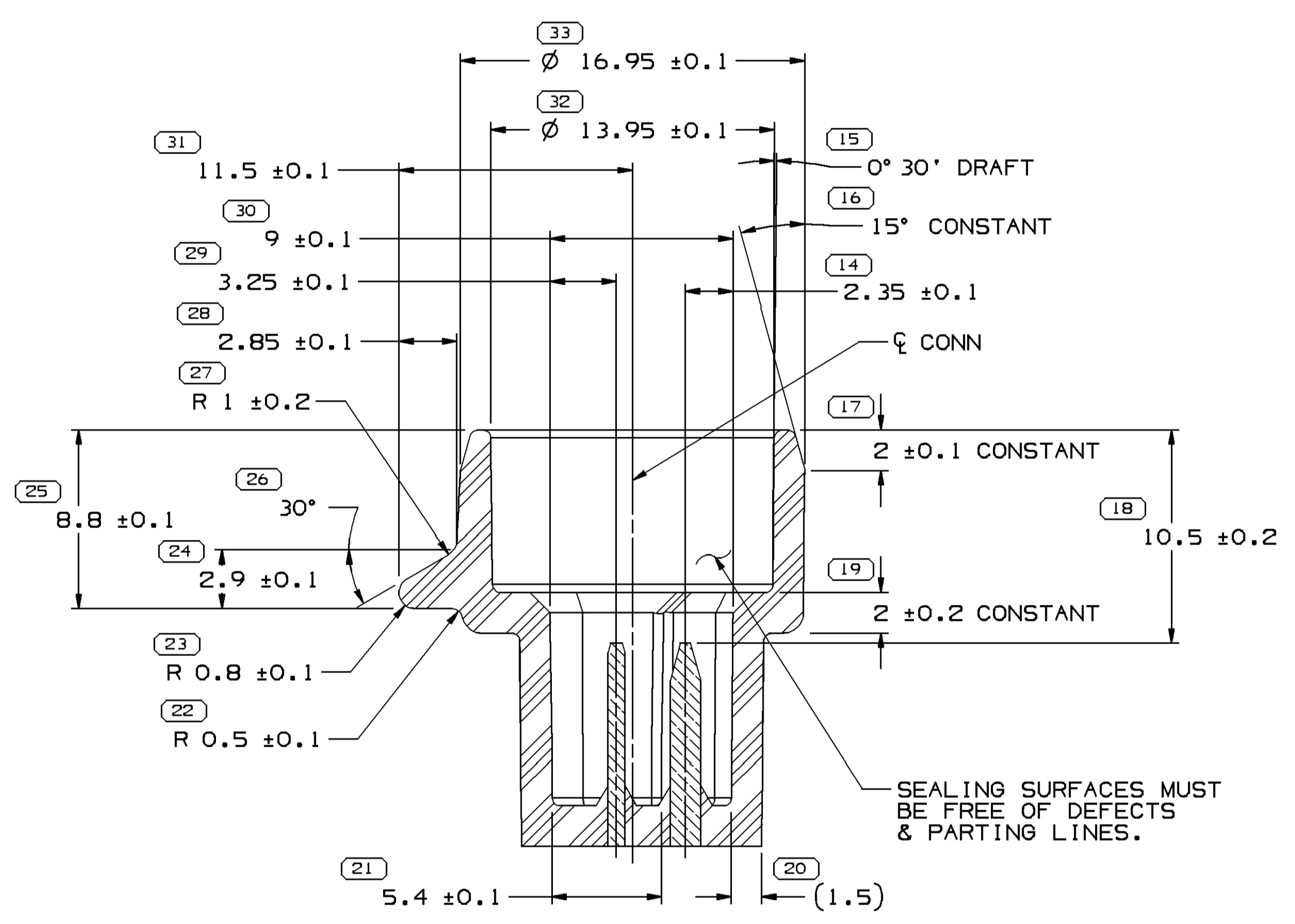
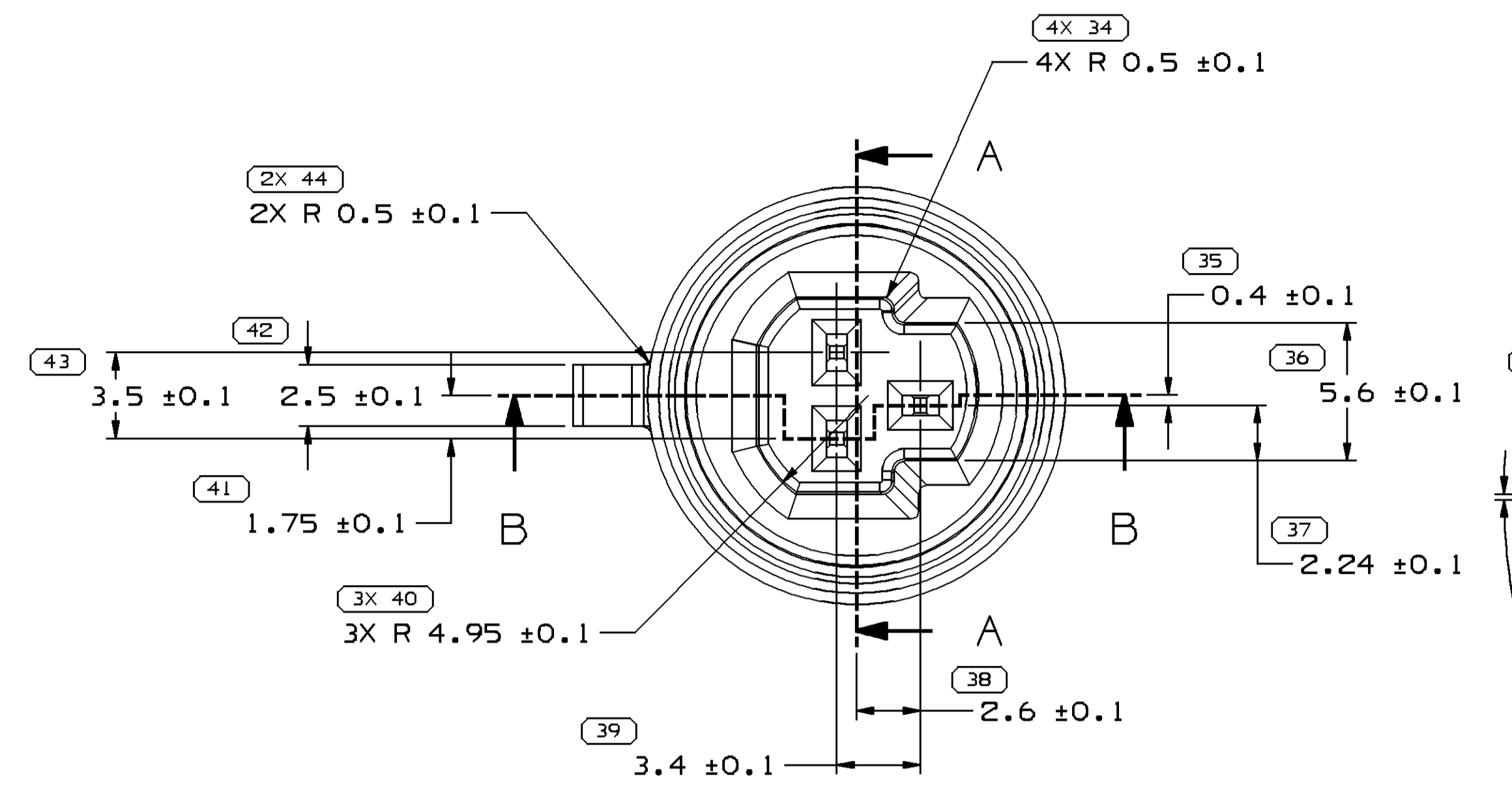
**RECOMMENDED**  
 BASE METAL - CDA-210, EXTRA SPRING TEMPER  
 \* TIN PLATING (WHERE APPLICABLE TO 125°C MAX CONTINUOUS USAGE): 0.0050±0.0025 MM (200±100 μIN) ELECTROPLATED TIN.  
 \* USAGE OF PLATING TYPES OTHER THAN RECOMMENDED MUST BE APPROVED BY DELPHI PACKARD ELECTRIC SYSTEMS ENGINEERING.

**MINIMUMS**  
 ELECTRICAL CONDUCTIVITY - ≥28% IACS AT 20 °C. USE OF A MATERIAL WITH CONDUCTIVITY <28% IACS MUST BE APPROVED BY PACKARD ELECTRIC MATERIALS ENGINEERING.  
 TENSILE STRENGTH - 430 - 480 MPa  
 UNDERPLATING FOR TIN PLATING - FOR BASE MATERIALS CONTAINING 10% OR MORE ZINC, AN UNDERPLATE OF COPPER 0.0025 MM (100 μIN) MINIMUM THICK IS REQUIRED.  
 PROCESSING LUBRICANT - ANY PROCESSING LUBRICANT REMAINING ON TERMINALS MUST NOT VARNISH OR DEGRADE THE ELECTRICAL PERFORMANCE OF THE CONNECTION UP TO A MAXIMUM TEMPERATURE OF 150°C. PROCESSING LUBRICANTS MUST BE APPROVED BY DELPHI PACKARD ELECTRIC SYSTEMS ENGINEERING.

### MATING BLADE INFORMATION



13721508	12065286	12052893
PART NO	CONNECTOR	CONNECTOR SEAL

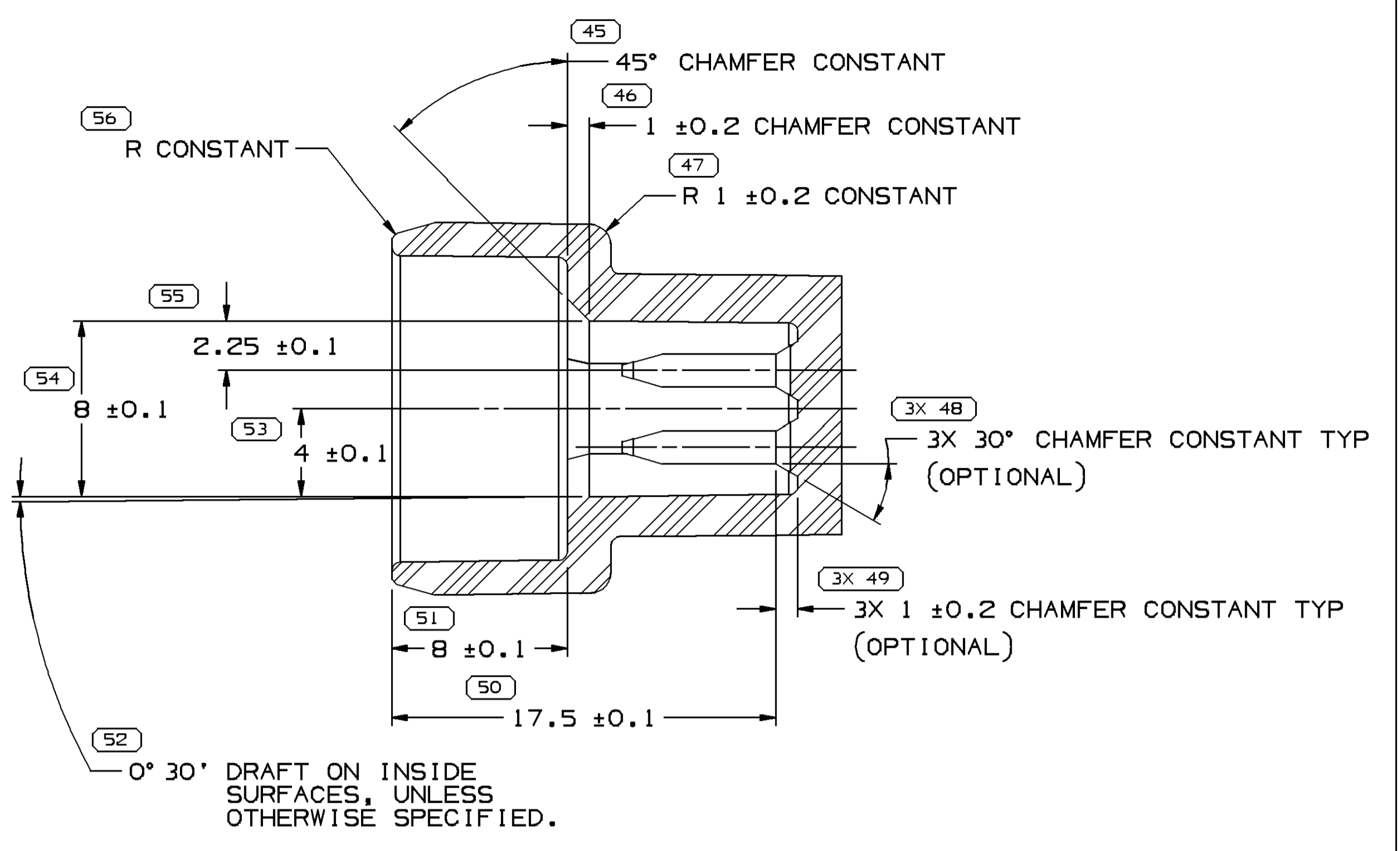


SECTION B-B

SEALING SURFACES MUST BE FREE OF DEFECTS & PARTING LINES.

INSPECTION SYMBOLS SHOWN IN THESE VIEWS ARE FOR REFERENCE ONLY

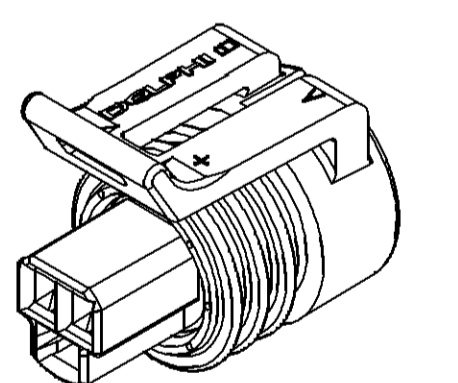
SYMBOL DEFINITION		TOTAL NO OF INSPECTIONS REQUIRED	MISSING SYMBOLS
□	A DIMENSION WITHOUT AN INSPECTION REPORT SYMBOL DOES NOT REQUIRE INSPECTION. IT MAY BE CONTROLLED ON THE INDIVIDUAL COMPONENT DRAWING.	66	NO MISSING SYMBOL NUMBER
□	LAST NO. USED	56	



SECTION A-A

### MATING CONNECTOR INFORMATION

RECOMMENDED MATERIAL: GLASS-FILLED POLYESTER M-2192-001-NATURAL



SCALE 2:1

### NOTES

- UNLESS OTHERWISE SPECIFIED AND/OR INDICATED:  
 DIMENSIONS ARE TO FACE OF VIEW SHOWN AND AUTOMATICALLY ROUNDED BY COMPUTER FOR INSPECTION (SEE MATH MODEL FOR PRECISE DIMENSIONS). FOR ALL OTHER DIMENSIONS NOT SHOWN BUT REQUIRED FOR TOOL BUILD, SEE MATH MODEL FOR PRECISE TOOL PATH DATA.
- WHEN PARTS ARE SHIPPED THEY MUST BE PACKED IN PLASTIC BAGS OR SHIPPING CONTAINERS MUST BE LINED WITH PLASTIC LINERS. BAGS OR LINERS MUST BE SEALED TO AVOID ENTRY OF FOREIGN MATTER.
- SEALING CODE 3 - DESIGN WILL PASS SALT FOG AND IMMERSION TEST AFTER CONDITIONING AS SPECIFIED IN ESA-644 (WEATHER-PACK), ESA-710 (METRI-PACK), ESA-650 (UNDERHOOD MICRO-PACK), C-4006 (WORLD CONNECTOR), ETC WHEN MATED TO MATING PART OR EQUIVALENT
- FOR LEAD LENGTH CALCULATIONS, DISTANCE FROM MATING END OF CONNECTOR TO FRONT END OF CABLE CORE IS 10.15/7.05.
- THIS PRODUCT IS NOT CATEGORIZED AS AN APPEARANCE ITEM, MINOR IMPERFECTIONS INCLUDING, BUT NOT LIMITED TO, FLOW MARKS, COLOR BLEMISHES, GATE VESTIGE, AND SOFT FLASH THAT DO NOT AFFECT THE FIT, FORM, OR FUNCTION OF THE PART ARE PERMISSIBLE PER DPNP 4.7-CS-01.
- FOR APPLICATION DATA SEE THE APPLICATION DRAWING.

(N/A) PROCESS SENSITIVE DIMENSION		THIRD ANGLE PROJECTION		DO NOT SCALE	
DIMENSIONS ENCLOSED IN ( ) INDICATE REFERENCE DIMENSIONS AND NO TOLERANCE LIMITS ARE ESTABLISHED		USE MATH DATA		NX	
DIMENSIONAL RANGE (MM)	CHART	ALL DIMENSIONS ARE IN MILLIMETERS			
FROM > 0	> 20	> 30	> 70	> 100	> 150
TO	20	30	70	100	150
TOLERANCE UNLESS OTHERWISE SPECIFIED		REFERENCE			
±0.15	±0.2	±0.3	±0.4	±0.5	±0.6
ANGULAR TOLERANCE 2°					

DATE				REV				ZONE				REVISION HISTORY				AUTH		DR		APVD	
18FE09	R	01	-	-	-	-	-	RELEASED	407218	MGE	ECB	MGE	407218	MGE	ECB	MGE	407218	MGE	ECB	MGE	
08MY09	R	01	AA	-	-	-	-	CORRECTED DRAWING NAME	407975	FRE	JAA	BEM									

**DELPHI**  
 DELPHI PACKARD ELECTRICAL/ELECTRONIC ARCHITECTURE  
 WYOMING, OH

DR	DATE
APV01 MEL ISSA GARZA	18FE09
APV02 MEL ISSA GARZA	18FE09
APV03 MEL ISSA GARZA	18FE09
APV04	
APV05	

UNLESS OTHERWISE SPECIFIED  
 THIS DOCUMENT IS IN ACCORDANCE WITH ASME Y14.5M-1994 AS MODIFIED BY THE IN-SITU DIMENSIONING AND TOLERANCE ADDENDUM-001. SEPARATE WRITINGS OR FEATURES MAY BE BASED SEPARATELY PER DELPHI 10949001 REFERENCES.

ALL DIMENSIONS ARE IN MILLIMETERS

DRAWING NAME  
 ASM CONN 3 F M/P 150

DRAWING NUMBER  
 13721508

SIZE	SCALE	FRAME NO	SHEET NO	REV	N/P
A0	5:1	1	1	1	01