

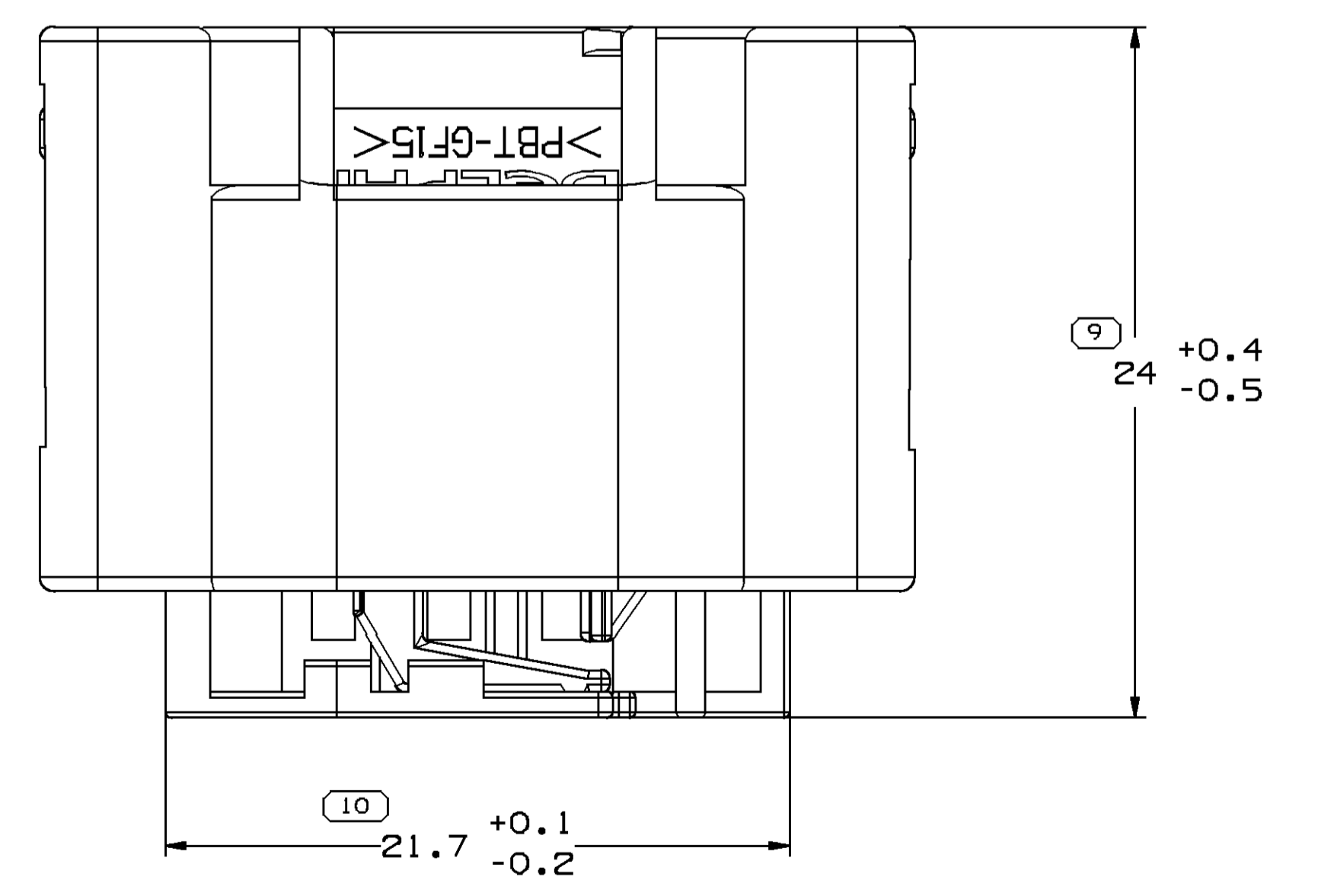
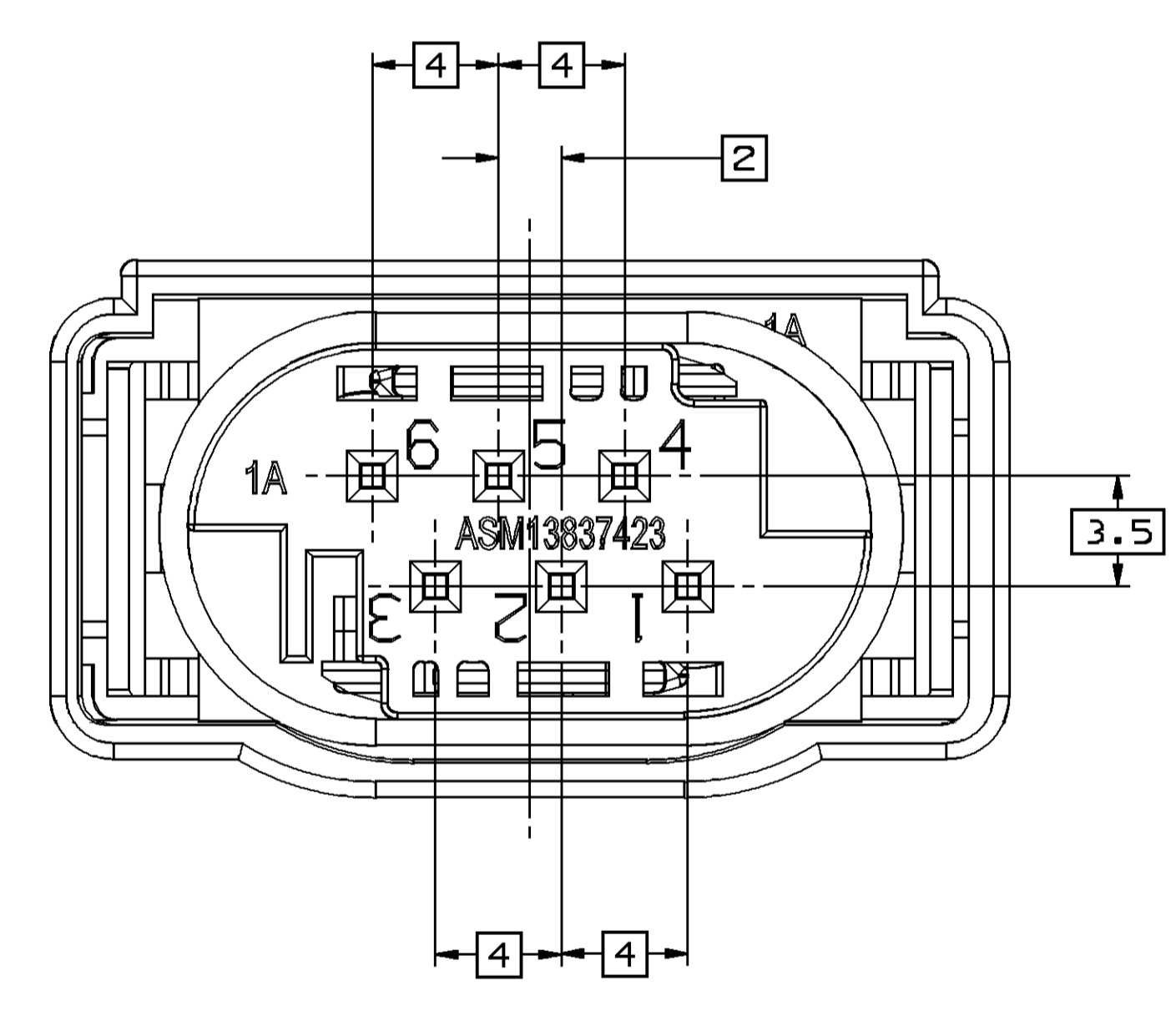
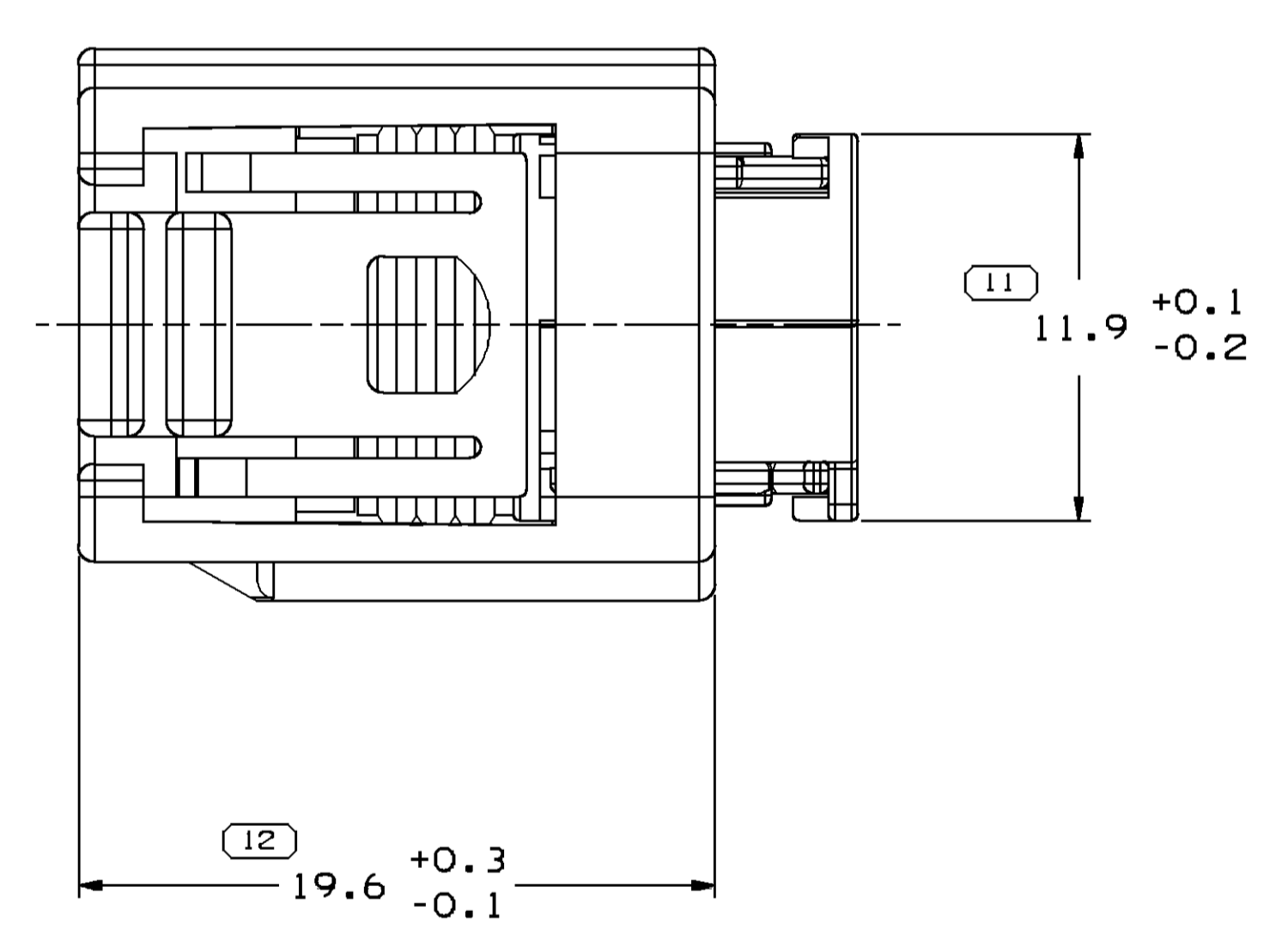
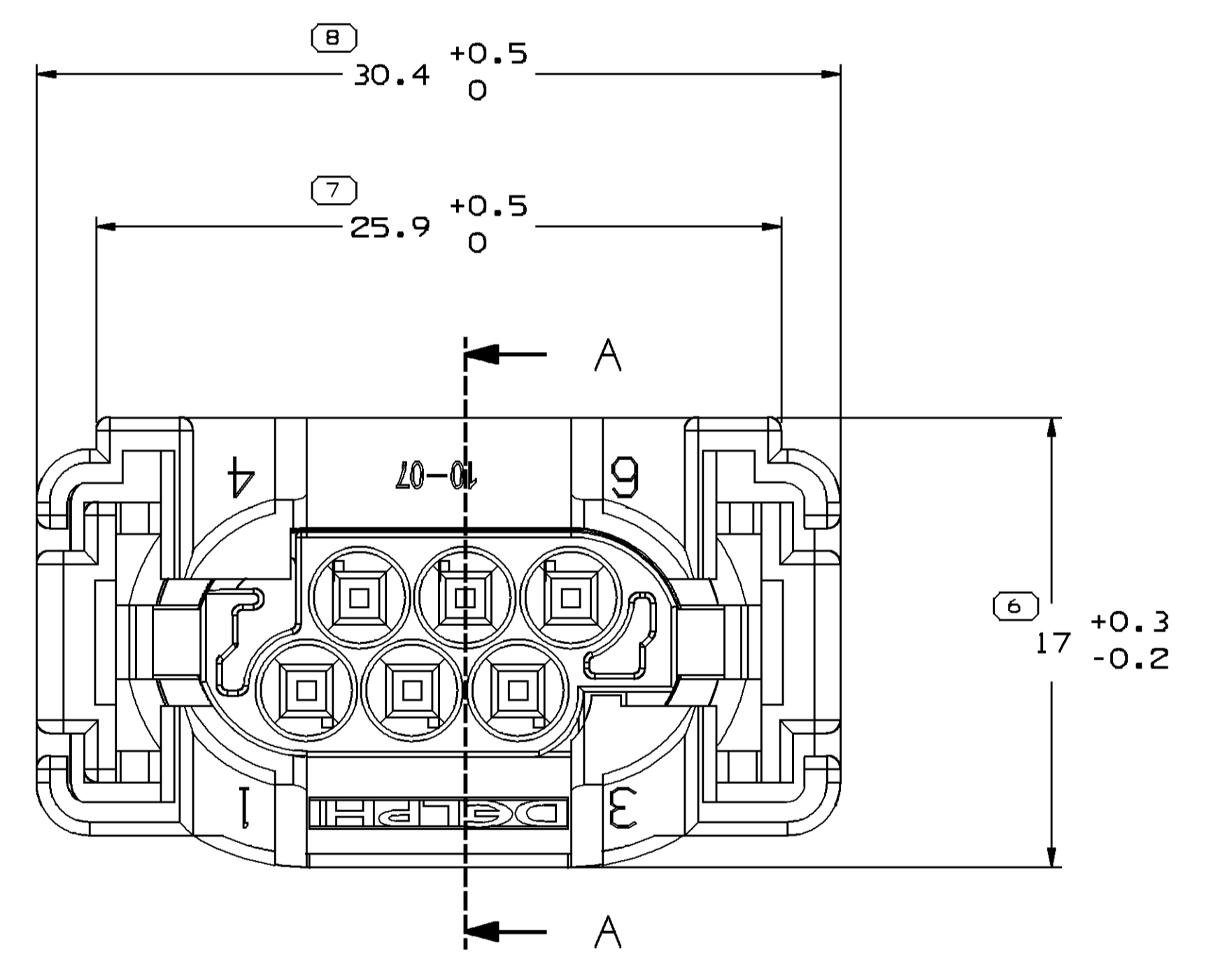
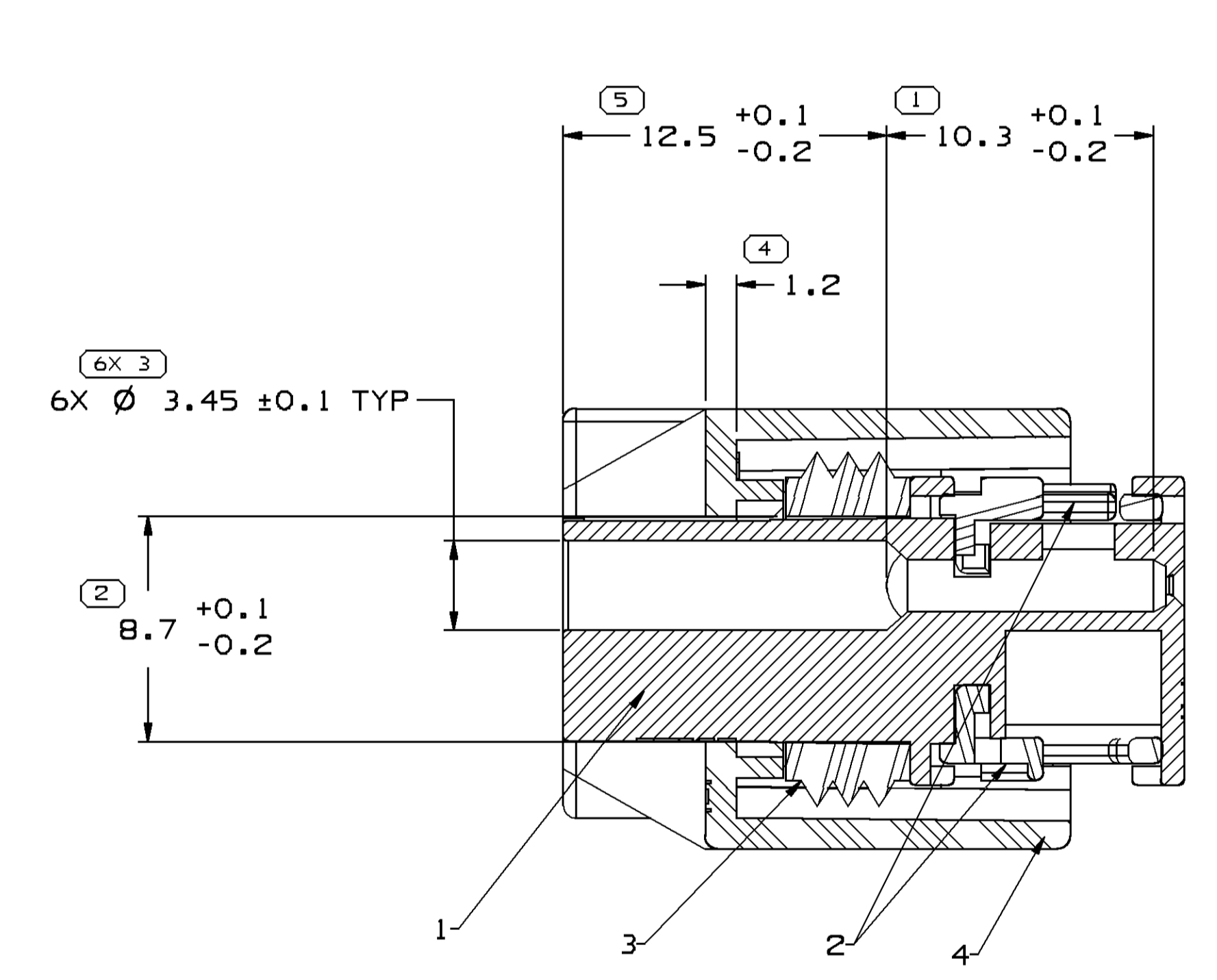
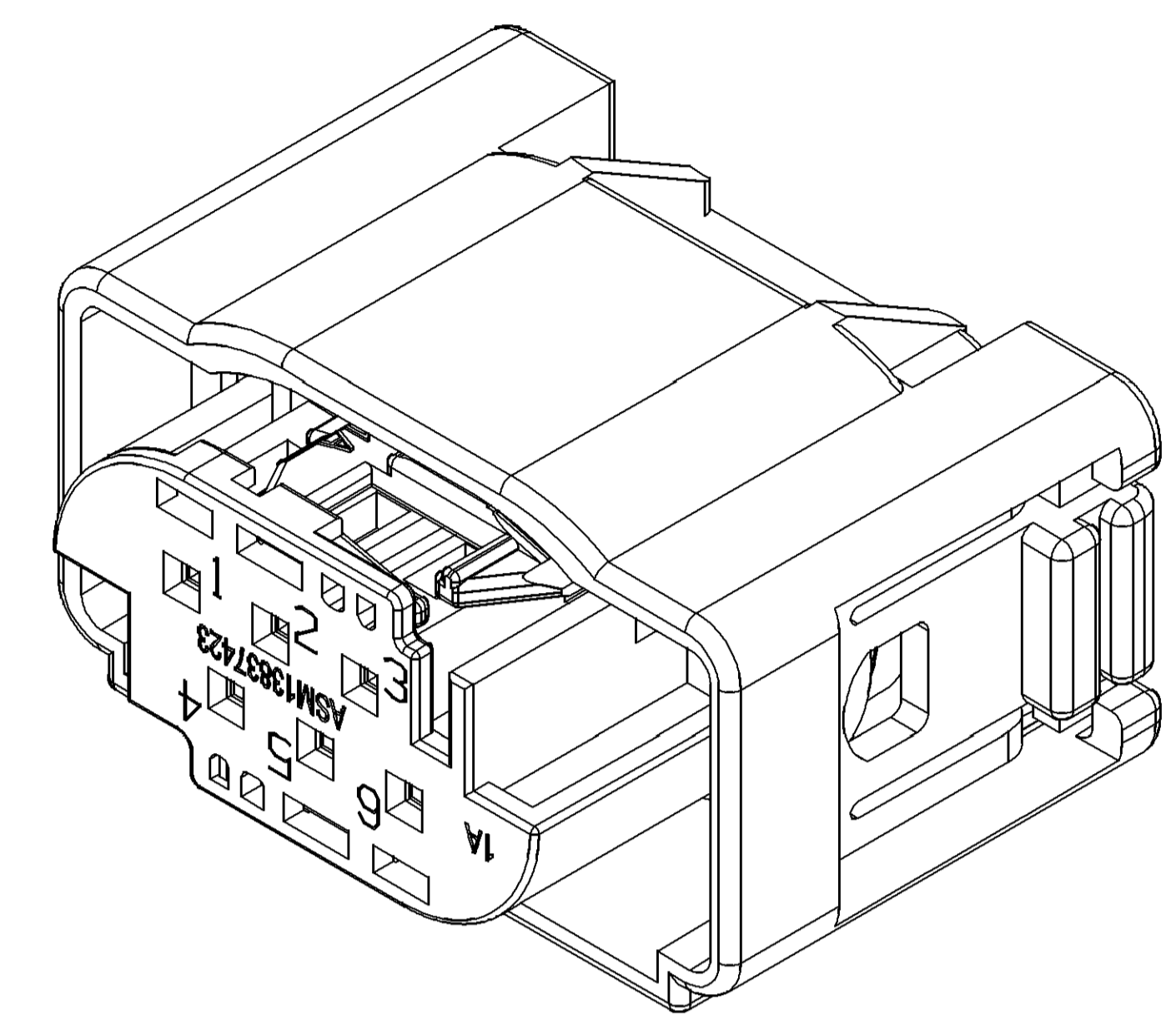
SYMBOL DEFINITION		MISSING SYMBOLS	
A DIMENSION WITHOUT AN INSPECTION REPORT SYMBOL DOES NOT REQUIRE INSPECTION. IT MAY BE CONTROLLED ON THE INDIVIDUAL COMPONENT DRAWING.	TOTAL NO OF INSPECTIONS REQUIRED	NO MISSING SYMBOL NUMBER	
	17		
	LAST NO. USED		
	12		

DWS STATUS				REVISION HISTORY				AUTH	
DATE	STG	REV	W/P	CHG	ZONE			DR	APV/APPV
19JUL10	R	01	-	-		RELEASED DRAWING		411293	JC JW6 EZ
25NO10	R	01	AA	-		UPDATE DRAWING		412719	JC JW6 EZ

ASSEMBLY PART NO.'S		MATING COMPONENTS	
FORD COMPONENT PART NO.	DELPHI COMPONENT PART NO.	FORD COMPONENT PART NO.	DELPHI COMPONENT PART NO.
2L1T-14A464-YA	13837423	669N-3C492-AA	N/A

ITEM	DESCRIPTION	COLOR	FORD COMPONENT PART NO.	DELPHI COMPONENT PART NO.	MATERIAL /SPEC. NO.	RECYCLING CODE	APPROX WEIGHT (g)	NO. OF ITEMS REQUIRED
1	HOUSING	BLACK	N/A	13837424	M2265002	PBT-6F15	2.91	1
2	TPA	GREEN	N/A	13608515	M2265007	PBT-6F20	0.10	2
3	COVER	BLACK	N/A	13837425	M2265002	PBT-6F15	3.23	1
4	SEAL	NATURE	N/A	13608517	MSB76001	N/A	0.39	1

APPLICABLE COMPONENTS (REFERENCE)								APPLICABLE WIRE SIZE	
ITEM	DESCRIPTION	COLOR	FORD COMPONENT PART NO.	DELPHI COMPONENT PART NO.	MATERIAL /SPEC. NO.	APPROX WEIGHT (g)	REFERENCE CABLE SEAL DELPHI PART NO.		
1	TERM F 064 SEALED (TIN PLATING)	N/A	N/A	15327080	COPPER ALLOY	0.14	15327690	AWG 20-22	0.25-0.9M



- NOTES
- ASSEMBLY MUST CONFORM TO SAE USCAR 2 - Rev 5, DATED NOV 2007.
 - GENERAL TOLERANCE: UNLESS OTHERWISE SPECIFIED, ALL ANGULAR DIMENSIONS EXCEPT DRAFT: $\pm 2^\circ$, 0.3 MAXIMUM RADIUS ON EDGES AND FILLETS SHOWN AS SHARP.
 - UNLESS OTHERWISE SPECIFIED AND/OR INDICATED: DIMENSIONS ARE TO FACE OF VIEW SHOWN AND AUTOMATICALLY ROUNDED BY COMPUTER FOR INSPECTION (SEE MATH MODEL FOR PRECISE DIMENSIONS). FOR ALL OTHER DIMENSIONS NOT SHOWN BUT REQUIRED FOR TOOL BUILD, SEE MATH MODEL FOR PRECISE TOOL PATH DATA.
 - FOR APPLICATION DATA SEE THE APPLICATION DRAWING.

DWS TYPE		PART DRAWING	
STYLE	D		
VOLUME (OMP)	DISTR CODE		
UNLESS OTHERWISE SPECIFIED			
THIS DOCUMENT IS IN ACCORDANCE WITH ASME Y14.5M-1994 AS MODIFIED BY THE 2003 SUPPLEMENT AND TELEPHONING ADDENDUM-2001. SEPARATE PATTERNS OF FEATURES MAY BE SHOWN SEPARATELY REGARDLESS OF REFERENCES.			
ALL DIMENSIONS ARE IN MILLIMETERS			
REFERENCE			
DIMENSIONS ENCLOSED IN () INDICATE REFERENCE DIMENSIONS AND NO TOLERANCE LIMITS ARE ESTABLISHED			
DIMENSIONAL RANGE (MM)		CHART IN	
FROM	TO		
0	6	> 0	> 300
> 6	> 30	> 30	> 300
> 30	> 120	> 120	> 300
> 120	> 150	> 150	> 300
> 150	> 200	> 200	> 300
> 200	> 250	> 250	> 300
> 250	> 300	> 300	> 300
TOLERANCES UNLESS OTHERWISE SPECIFIED			
±0.25 ±0.34 ±0.7 ±0.5 ±0.6 ±0.8		±1 ±1.2	
ANGULAR TOLERANCE ±1°			
THIRD ANGLE PROJECTION		DO NOT SCALE	
USE MATH DATA		NX	

DELPHI
DELPHI PACKARD ELECTRIC SYSTEMS
WARREN, OH

DR	DATE
APV01 JAY, CAI	19JUL10
APV02 JIANWEI, GUO	19JUL10
APV03 ERIC, ZHOU	19JUL10
APV04	
APV05	

SUBSTANCES OF CONCERN AND RECYCLED CONTENT, PER DELPHI (0944900)

MATERIAL: SEE CHART

DRAWING NAME: ASM CONN 0 F 0.64 SLD BASE 6

DRAWING NUMBER: 13837423

SIZE: A0 SCALE: 5:1 FRM NO: 1 OF 1 SHEET NO: 1 OF 1 STG REV: R 01 AA

Date: 26-Nov-10 Time: 15:24