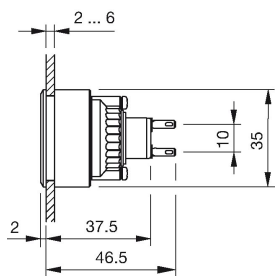


14-810.918 - Buzzer



Attention: The preview is based on a sample product. This can differ from your current configuration.

Dimensions



Mounting cut-outs

Mounting

Mounting cut-out \varnothing 30.5 mm
Mounting style flush mounting

Front

Front shape round
Front dimension \varnothing 35 mm
Front cap material Aluminium
Front cap colour natural

Other Attributes

Weight 0.016 kg
Operating voltage 24 V DC

IP-Rating

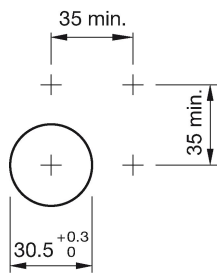
Front protection IP 40

Connection Method

Terminal Solder 2.8 x 0.5 mm

Function

Buzzer



Wiring diagram

