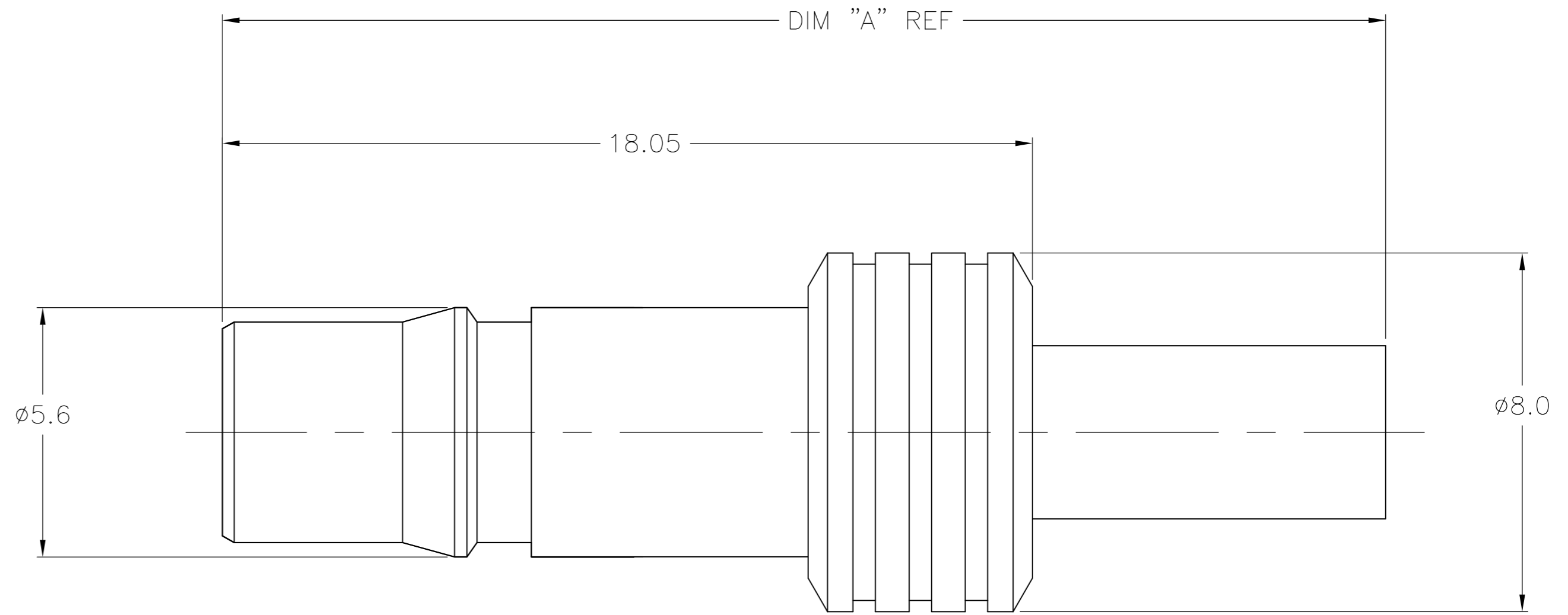


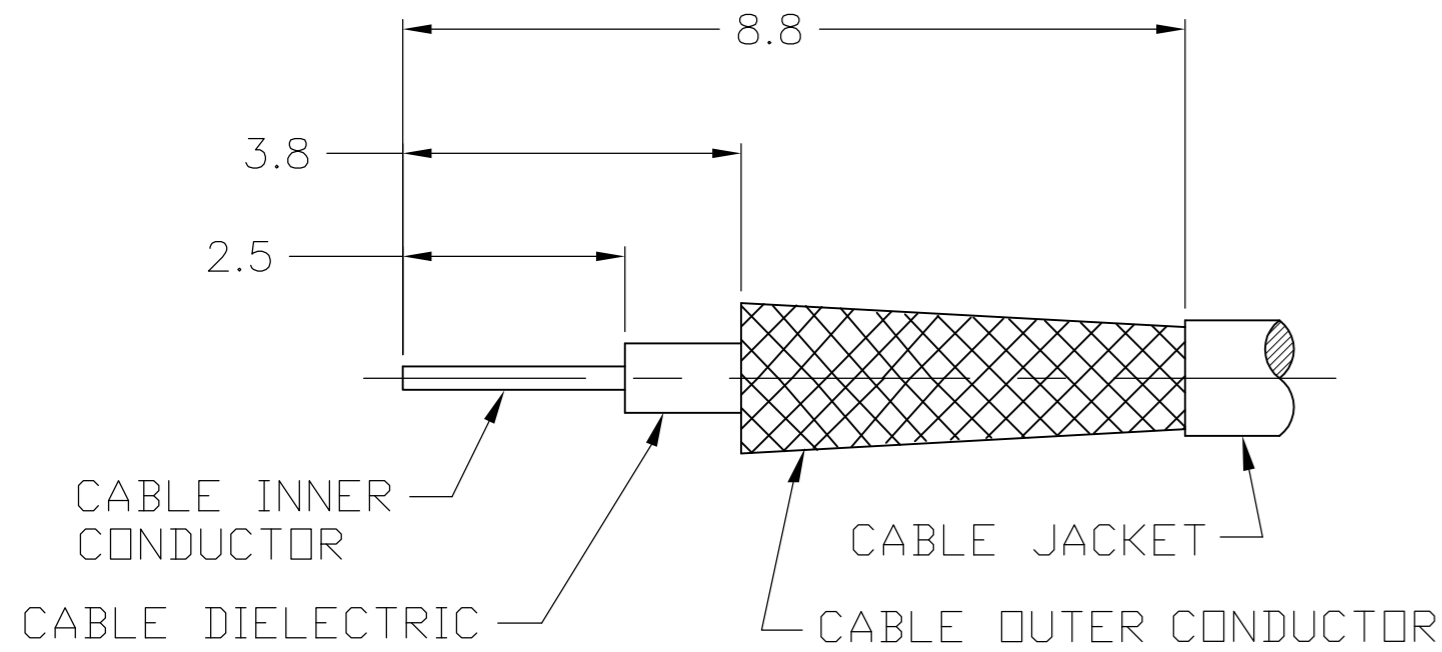
THIS DRAWING IS UNPUBLISHED. RELEASED FOR PUBLICATION
 © COPYRIGHT - By - ALL RIGHTS RESERVED.

LOC	DIST	REVISIONS					
		P	LTR	DESCRIPTION	DATE	DWN	APVD
AJ	16						
		A1		REVISED PER ECO-08-000700	2/5/2008	DW	BW
		B		REVISED PER ECO-12-017046	09JUN13	AM	MY

- 1. CRIMP FERRULE USING CRIMP DIE HEX SIZE SPECIFIED IN TABLE.
- 2. SINGLE PACKED
- 3. BULK PACKED IN QUANTITIES OF 100
- 4. ASSEMBLE TO CABLE USING IS SHEET 408-8900
- 5. OBSOLETE PARTS; OBSOLETE CIS STREAMLINING PER D.RENAUD/D.SINISI



CABLE PREPARATION
SCALE: NTS



5	OBSOLETE	3	28.2	5.41	RG58/U, 141, 303 & SF142	1408411-8	9-446556-2	1408448-2	1408338-8
		2	28.2	5.41	RG58/U, 141, 303 & SF142	1408411-8	9-446556-2	1408448-2	1408338-7
		3	28.2	5.41	RG55/U, 142, 223 & 400	1408411-8	2-1403102-5	1408448-2	1408338-6
	5	2	28.2	5.41	RG55/U, 142, 223 & 400	1408411-8	2-1403102-5	1408448-2	1408338-5
	OBSOLETE	3	25.9	3.83	RD316/U	1408411-4	2-413889-7	1408448-1	1408338-4
		2	25.9	3.83	RD316/U	1408411-4	2-413889-7	1408448-1	1408338-3
		3	25.9	3.25	RG316/U, 174 & 188	1408411-4	2-413889-4	1408448-1	1408338-2
	OBSOLETE	2	25.9	3.25	RG316/U, 174 & 188	1408411-4	2-413889-4	1408448-1	1408338-1
		PACK	DIM A	HEX	CABLE	CONTACT	FERRULE	HSG ASSY	PART NO.

CENTER CONTACT	BERYLLIUM COPPER	GOLD
HOUSING	BRASS	NICKEL
FERRULE	COPPER OR BRASS	NICKEL
DIELECTRIC	PTFE	N/A
COMPONENT	MATERIAL	FINISH

THIS DRAWING IS A CONTROLLED DOCUMENT.

DWN: DCam 25SEP2002
 CHK: -
 APVD: DCam 2/24/04
 PRODUCT SPEC: 108-2087
 APPLICATION SPEC: -

STE TE Connectivity

NAME: QMA STRAIGHT CABLE JACK CRIMP ATTACHMENT

SIZE: A2 CAGE CODE: 00779 DRAWING NO: C=1408338 RESTRICTED TO: -

WEIGHT: - SCALE: 10:1 SHEET: 1 OF 1 REV: B

CUSTOMER DRAWING