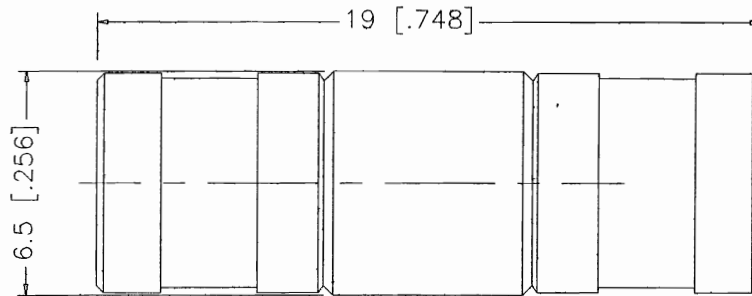



REV.	DATE	DESCRIPTION
NC	08/19/99	INITIAL RELEASE



DESCRIPTION	MATERIAL	FINISH	UNLESS OTHERWISE SPECIFIED DIMENSIONS ARE IN MILLIMETERS	APPROVALS	DATE							
1	BODY	BRASS	NICKEL	<small>DIMENSIONS IN [ ] ARE IN INCHES FOR CUSTOMER REFERENCE ONLY</small>	DRAWN	G.R.S.	08/19/99	TITLE SMB FEMALE TO FEMALE ADAPTOR				
2	INSULATOR	TEFLON	NATURAL		CHECKED							
3	CONTACT PIN	BER. COPPER	GOLD	<small>UNLESS OTHERWISE SPECIFIED TOLERANCES FOR MILLIMETERS ARE:</small> 0.5-6 = ± 0.2 8-30 = ± 0.4 30-120 = ± 0.8 120-315 = ± 1 315-1000 = ± 1.6 1000-2000 = ± 2.4	ISSUED			SIZE	FSCM NO.	DWG. NO.	REV.	
4								A	99001	142245.DWG	NC	
5												
6												
7												
8				DO NOT SCALE DRAWING			SCALE	NA	PART NO.	142245	SHEET	1 OF 1