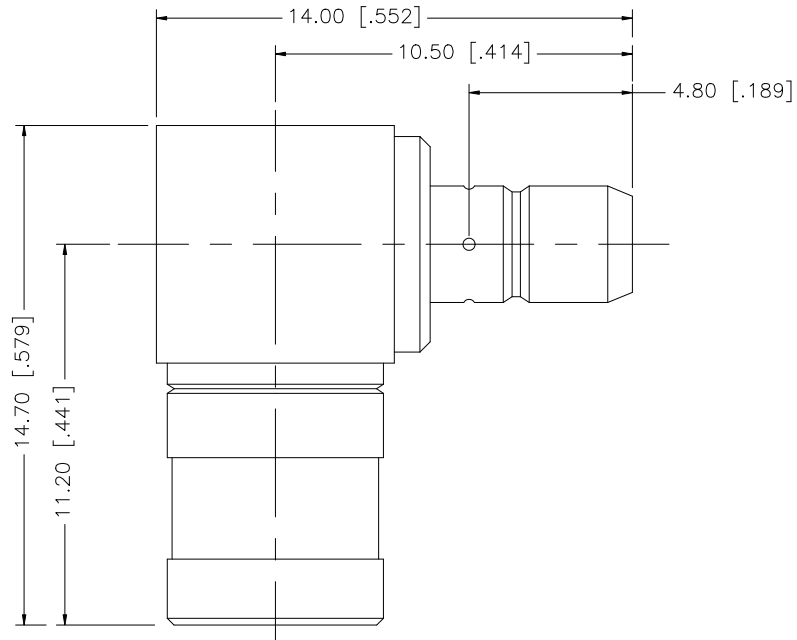


REV.	DATE	DESCRIPTION
NC	09/06/07	INITIAL RELEASE



8																				
7																				
6																				
5																				
4																				
3	CONTACT PIN	BER. COPPER	GOLD	1	<small>UNLESS OTHERWISE SPECIFIED DIMENSIONS ARE IN MILLIMETERS. DIMENSIONS IN [] ARE IN INCHES AND FOR CUSTOMER REFERENCE ONLY.</small> <small>UNLESS OTHERWISE SPECIFIED TOLERANCES FOR MILLIMETERS ARE:</small> 0.5 - 8mm ± 0.20mm 8 - 30mm ± 0.40mm 30 - 120mm ± 0.50mm <small>UNLESS OTHERWISE SPECIFIED TOLERANCES FOR INCHES ARE:</small> .020 - .315 = ± 0.007" .315 - 1.180 = ± 0.015" 1.180 - 4.724 = ± 0.020" <small>DO NOT SCALE DRAWING</small>	APPROVALS	DATE	<h1 style="color: blue;">Amphenol Connex</h1>												
2	INSULATOR	TEFLON	NATURAL	1		DRAWN	G.R.S.		09/06/07	PART DESCRIPTION										
1	BODY	BRASS	GOLD	1		CHECKED				SMB MALE TO SMB FEMALE R/A ADAPTER										
	DESCRIPTION	MATERIAL	FINISH	QTY		ISSUED				PART NO.										
						SHEET	1 OF 1		142248											
						CAD FILE	C:/142/142248.DWG													
						DWG. NO.	142248.DWG	REV.	NC											
								SIZE	A											
								SCALE	NA											