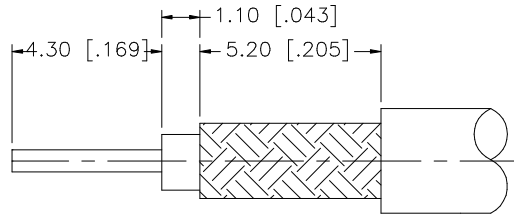
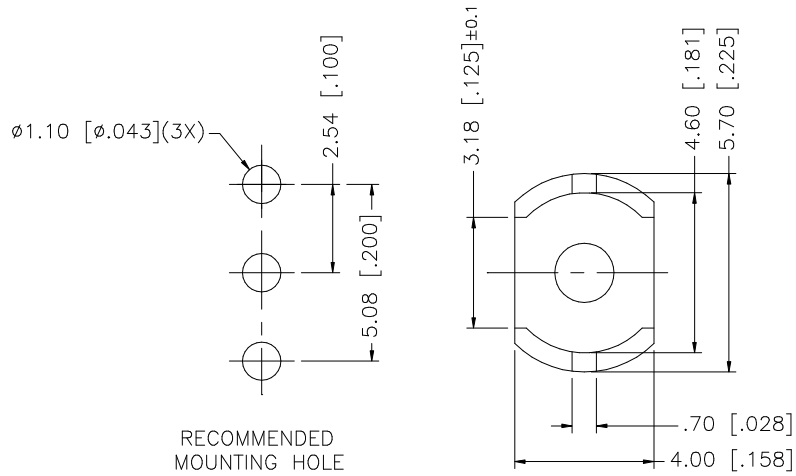


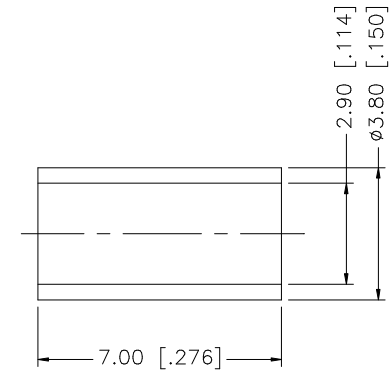
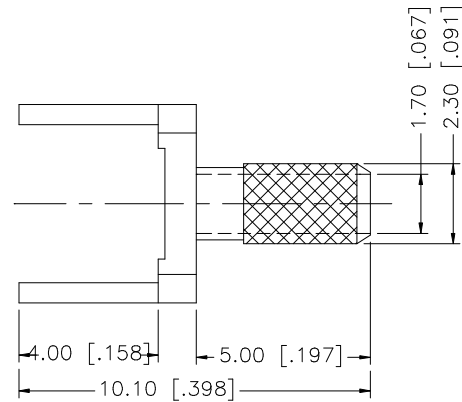
REV.	DATE	DESCRIPTION
A	03/08/05	UPDATE DRAWING FORMAT/ ADD 3.18 DIMENSION
B	12/16/06	REVISE DRAWING DESCRIPTION



RECOMMENDED  
CABLE STRIPPING DIMS



RECOMMENDED  
MOUNTING HOLE



NOTE:

1. CRIMPED FERRULE  
HEX CRIMP SIZE 3.25 [.128"]

DESCRIPTION	MATERIAL	FINISH	QTY	DO NOT SCALE DRAWING	APPROVALS	DATE	PART DESCRIPTION						
FERRULE	COPPER	GOLD	1	<small>UNLESS OTHERWISE SPECIFIED DIMENSIONS ARE IN MILLIMETERS. DIMENSIONS IN [ ] ARE IN INCHES AND FOR CUSTOMER REFERENCE ONLY.</small> <small>UNLESS OTHERWISE SPECIFIED TOLERANCES FOR MILLIMETERS ARE:</small> 0.5 - 8mm ± 0.20mm 8 - 30mm ± 0.40mm 30 - 120mm ± 0.50mm <small>UNLESS OTHERWISE SPECIFIED TOLERANCES FOR INCHES ARE:</small> .020 - .315 = ± 0.007" .315 - 1.180 = ± 0.015" 1.180 - 4.724 = ± 0.020"	DRAWN	G.R.S.	12/16/06	<h1 style="text-align: center; color: blue;">Amphenol Connex</h1> <p style="text-align: center;">SMB TERMINATOR (FOR 316/U, 179/U CABLE)</p>					
BODY	BRASS	GOLD	1		CHECKED							PART NO. 142256	
					ISSUED			DWG. NO. 142256.DWG					
					SHEET	1 OF 1		REV.	B	SIZE	A	SCALE	NA
					CAD FILE	C:/142/142256.DWG							